

INDEX OF SHEETS

1 COVER SHEET
 2 INDEX OF SHEETS, GENERAL NOTES, STATE STANDARDS, AND MIXTURE REQUIREMENTS
 3 - 4 SUMMARY OF QUANTITIES
 5 - 8 TYPICAL SECTIONS
 9 - 10 SCHEDULE OF QUANTITIES
 11 SCHEMATIC DIAGRAM
 12 - 29 PROPOSED ROADWAY PLANS
 30 - 31 DETAILS
 32 MAINTENANCE OF TRAFFIC - GENERAL NOTES
 33 MAINTENANCE OF TRAFFIC - TEMPORARY LANE CLOSURES
 34 - 38 MAINTENANCE OF TRAFFIC - STAGE 1
 39 - 40 MAINTENANCE OF TRAFFIC - WEEKEND LANE CLOSURE DETAIL
 41 - 45 MAINTENANCE OF TRAFFIC - STAGE 2
 46 - 50 MAINTENANCE OF TRAFFIC - STAGE 3
 51 MAINTENANCE OF TRAFFIC - TEMPORARY INFORMATION SIGNING
 52 - 53 SIGNING SCHEDULE OF QUANTITIES
 54 - 71 PAVEMENT MARKING AND SIGNING PLANS
 72 - 80 SIGNING DETAILS
 81 - 84 STRUCTURAL PLANS - I-80 OVER FRONTAGE ROAD
 85 - 88 STRUCTURAL PLANS - I-80 OVER I-55
 89 - 94 STRUCTURAL PLANS - I-80 OVER ROCK RUN CREEK
 95 - 97 STRUCTURAL PLANS - I-80 OVER HOUBOLT ROAD
 98 - 102 STRUCTURAL PLANS - I-80 OVER JOLIET JUNCTION TRAIL
 103 - 116 DISTRICT ONE DETAILS

IDOT STANDARDS

000001-06 STANDARDS SYMBOLS, ABBREVIATIONS AND PATTERNS
 420401-08 BRIDGE APPROACH PAVEMENT CONNECTOR
 442201-03 CLASS C AND D PATCHES
 482011-03 HMA SHLD. STRIPS/SHLDS WITH RESURFACING OR WIDENING AND RESURFACING PROJECTS
 609001-05 BRIDGE APPROACH SHOULDER PAVEMENT AND DRAIN
 635001-01 DELINEATORS
 642001-01 SHOULDER RUMBLE STRIPS
 701400-05 APPROACH TO LANE CLOSURE, FREEWAY/EXPRESSWAY
 701401-06 LANE CLOSURE, FREEWAY/EXPRESSWAY
 701406-06 LANE CLOSURE, FREEWAY/EXPRESSWAY, DAY OPERATIONS ONLY
 701411-07 LANE CLOSURE, MULTILANE, ENTRANCE AT ENTRANCE OR EXIT RAMP FOR SPEEDS > 45 MPH
 701426-04 LANE CLOSURE, MULTILANE, INTERMITTENT OR MOVING OPER. FOR SPEEDS > 45 MPH
 701446-02 TWO LANE CLOSURE FREEWAY/EXPRESSWAY
 701901-01 TRAFFIC CONTROL DEVICES
 704001-06 TEMPORARY CONCRETE BARRIER
 720001-01 SIGN PANEL MOUNTING DETAILS
 720006-02 SIGN PANEL ERECTION DETAILS
 720011-01 METAL POSTS FOR SIGNS, MARKERS & DELINEATORS
 729001-01 APPLICATIONS OF TYPES A & B METAL POSTS (FOR SIGNS & MARKERS)
 720021-02 SIGN PANELS EXTRUDED ALUMINUM TYPE

DISTRICT 1 DETAILS

BD400-04 (BD-22) PAVEMENT PATCHING FOR HMA SURFACED PAVEMENT
 BD400-05 (BD-32) BUTT JOINT AND HMA TAPER DETAILS
 BD600-03 (BD-08) DETAILS FOR FRAMES AND LIDS ADJUSTMENT
 TC-08 FREEWAY ENTRANCE AND EXIT RAMP CLOSURE DETAILS
 TC-09 TRAFFIC CONTROL DETAILS FOR FREEWAY SINGLE & MULTI-LANE WEAVE
 TC-12 MULT-LANE FREEWAY PAVEMENT MARKINGS DETAILS
 TC-17 TRAFFIC CONTROL DETAILS FOR FREEWAY SHOULDER CLOSURES AND PARTIAL RAMP CLOSURES
 TC-18 SIGNING FOR FLAGGING OPERATIONS AT WORK ZONE OPENINGS
 TC-27 MILE POST MARKERS - GORE SIGNS - MAJOR GUIDE SIGN LAYOUT - ARROWS
 BE-600 ELECTRONIC CONNECTION TO SIGN STRUCTURE - SPAN TYPE
 BE-601 ELECTRONIC CONNECTION TO SIGN STRUCTURE - CANTILEVER TYPE

GENERAL NOTES

- BEFORE STARTING ANY EXCAVATION, THE CONTRACTOR SHALL CALL "JULIE" AT 800-892-0123 FOR FIELD LOCATIONS OF BURIED UTILITIES. 48 HOUR ADVANCE NOTIFICATION IS REQUIRED.
- THE CONTRACTOR SHALL COORDINATE WORK ACTIVITIES WITH UTILITY COMPANIES AS REQUIRED.
- THE CONTRACTOR SHALL COORDINATE WORK ACTIVITIES WITH ADJACENT IDOT CONTRACTS 60M64, 60M65 AND 60M66.
- THE CONTRACTOR WILL NOT BE ALLOWED TO SET UP A YARD OR FIELD OFFICE ON STATE PROPERTY WITHOUT WRITTEN PERMISSION FROM THE DEPARTMENT.
- THE CONTRACTOR SHALL NOTIFY THE EXPRESSWAY TRAFFIC FIELD ENGINEER AT 847-705-4151 AT LEAST 72 HOURS PRIOR TO FINAL PAVEMENT MARKING INSTALLATION.
- THE CONTRACTOR SHALL CONTACT THE DISTRICT ONE TRAFFIC CONTROL SUPERVISOR AT (847) 705-4151 A MINIMUM OF 72 HOURS IN ADVANCE OF BEGINNING WORK.
- THE ALIGNMENTS AND SUPPORTING DATA SHOWN IN THE PLANS WAS DEVELOPED FROM PREVIOUS PLANIMETRICS AND AERIAL PHOTOGRAPHY FURNISHED BY THE DEPARTMENT AND IS NOT THE RESULT OF A GROUND SURVEY. THEREFORE, THE ALIGNMENTS AND SUPPORTING DATA SHOWN IN THE PLANS IS FOR REFERENCE PURPOSES ONLY. THE RELATIVE ACCURACY OF THE INFORMATION IS UNKNOWN AND CANNOT BE GUARANTEED. THE CONTRACTOR MAY BE REQUIRED TO ADJUST LAYOUT TO MATCH ACTUAL FIELD CONDITIONS AND THE INTENT OF THE PLANS.
- THE CONTRACTOR SHALL USE CARE IN WORKING NEAR ANY AND ALL EXISTING ITEMS. ITEMS DAMAGED WILL BE REPAIRED BY THE CONTRACTOR AT THE CONTRACTOR'S OWN EXPENSE.
- DRAINAGE ADJUSTMENT, CLEANING OR RECONSTRUCTION LOCATIONS WILL BE DETERMINED IN THE FIELD BY THE ENGINEER.
- EXISTING BROKEN FRAMES AND LIDS SHALL BE REMOVED AND DISPOSED OF BY THE CONTRACTOR AND SHALL BE REPLACED AS DIRECTED BY THE ENGINEER. REPLACEMENT FRAMES AND LIDS WILL BE PAID FOR IN ACCORDANCE WITH ARTICLE 109.04 OF THE STANDARD SPECIFICATIONS UNLESS A SEPARATE PAY ITEM HAS BEEN PROVIDED.
- VERTICAL CLEARANCES OF BRIDGES SHALL BE MAINTAINED. THE CONTRACTOR SHALL VERIFY ALL BRIDGE CLEARANCE BEFORE AND AFTER CONSTRUCTION AND FURNISH RESULTS TO THE ENGINEER. THIS WORK SHALL BE INCLUDED IN THE LUMP SUM PRICE FOR CONSTRUCTION LAYOUT.
- BEFORE BEGINNING ANY WORK, THE CONTRACTOR SHALL RETAIN AND RECORD FOR FUTURE REFERENCE, ALL EXISTING PAVEMENT MARKING LINES (AND RAISED REFLECTIVE PAVEMENT MARKINGS) IN ORDER THAT THESE LOCATIONS CAN BE RE-ESTABLISHED FOR STRIPING. EXACT LOCATIONS OF ALL PAVEMENT MARKING SHALL BE DIRECTED THE ENGINEER.
- IT SHALL BE THE CONTRACTOR'S RESPONSIBILITY TO VERIFY ALL DIMENSIONS AND CONDITIONS EXISTING IN THE FIELD PRIOR TO CONSTRUCTION AND ORDERING MATERIALS.

GENERAL NOTES (CONTINUED)

- THE CONTRACTOR SHALL TAKE ALL NECESSARY SAFETY PRECAUTIONS TO PROTECT AND PROVIDE ACCESS TO ABUTTING PROPERTY, UTILITIES, PEDESTRIANS, AND VEHICULAR TRAFFIC.
- SAW CUTTING IS INCLUDED TO THE PROPOSED ITEM OF WORK SPECIFIED, UNLESS OTHERWISE SHOWN IN PLAN.
- ALL PAVEMENT PATCHING LOCATIONS WILL BE DETERMINED IN THE FIELD BY THE ENGINEER.
- WHEN MILLED PAVEMENT IS OPEN TO TRAFFIC, THE MAXIMUM GRADE DIFFERENTIAL BETWEEN TRAVEL LANES SHALL NOT EXCEED 1-1/2". WHEN NEWLY PLACED ASPHALT IS OPENED TO TRAFFIC, THE MAXIMUM LIFT DIFFERENCE BETWEEN THE TRAVEL LANES SHALL NOT EXCEED 2". GRADE DIFFERENTIALS BETWEEN TRAVEL LANES UP TO A MAXIMUM OF 4" ARE ALLOWED WITH INSTALLATION OF A TEMPORARY WEDGE OR MILLED SLOPED EDGE AT A MINIMUM GRADE OF 1:3 (V:H). INSTALLATION AND REMOVAL OF THE TEMPORARY WEDGES AND/OR TAPERED MILLED EDGES SHALL NOT BE PAID FOR SEPARATELY, BUT SHALL BE INCLUDED IN THE COST OF THE CONTRACT.
- WHERE ARTIFICIAL LIGHTING IS USED IN NIGHT OPERATIONS, THE CONTRACTOR SHALL EXERCISE THE UTMOST PRECAUTIONS IN PREVENTING ADVERSE VISIBILITY TO THE MOTORING PUBLIC AND ADJOINING RESIDENTIAL AREAS.
- EXISTING PAVEMENT MARKINGS THAT CONFLICT WITH REVISED TRAFFIC PATTERNS SHALL BE REMOVED AS DIRECTED BY THE ENGINEER. THIS WORK WILL BE PAID FOR A THE CONTRACT UNIT PRICE PER SQUARE FOOT FOR PAVEMENT MARKING REMOVAL.
- TEMPORARY EDGE LINES IN THE SUGGESTED MAINTENANCE OF TRAFFIC SHALL BE INSTALLED PRIOR TO RE-OPENING THE LANES TO TRAFFIC.
- VERTICAL BARRICADES WILL REMAIN IN PLACE ALONG THE EDGES OF PAVEMENT AS SHOWN IN THE SUGGESTED MAINTENANCE OF TRAFFIC PLANS UNTIL THE SURFACE COURSE AND PROPOSED PAVEMENT MARKING EDGE LINES HAVE BEEN COMPLETED.
- SURFACE TESTING OF ASPHALT PAVEMENTS WILL BE PERFORMED BY THE CONTRACTOR AS DESCRIBED IN THE SPECIAL PROVISIONS AND THE COST SHALL BE INCLUDED IN THE COST OF THE HMA ITEMS BEING TESTED.
- ALL TRAFFIC CONTROL, DEVICES, BARRICADES, DRUMS, LANE CLOSURES, TEMPORARY PAVEMENT MARKINGS, ETC. ALONG THE CROSS ROADS WITHIN THE CONTRACT LIMITS, UNLESS OTHERWISE SPECIFIED IN THE TRAFFIC CONTROL PLANS, SHALL NOT BE PAID FOR SEPARATELY, BUT SHALL BE INCLUDED IN THE LUMP SUM PRICE FOR "TRAFFIC CONTROL AND PROTECTION (EXPRESSWAYS)" THE CONTRACTOR SHALL USE THE APPROPRIATE IDOT OR DISTRICT ONE STANDARD AND OBTAIN APPROVAL FROM THE ENGINEER.
- THE CONTRACTOR SHALL MODIFY, OR SUPPLEMENT, EXISTING SIGN PANEL MOUNTING BRACKETS AS REQUIRED FOR PROPER INSTALLATION OF THE PROPOSED SIGN PANELS, INCLUDING ALL LABOR, EQUIPMENT, MATERIALS, AND HARDWARE AS DIRECTED BY THE ENGINEER. THIS WORK SHALL BE INCLUDED IN THE COST OF SIGN PANEL - TYPE 3.
- CONTRACTOR TO PATCH BEFORE MILLING. CLASS D PATCHES SHALL BE PLACED ON THE MAINLINE AND CLASS C PATCHES SHALL BE PLACED ON THE RAMPS AS DIRECTED BY THE ENGINEER.

HOT-MIX ASPHALT REQUIREMENTS

MIXTURE TYPE	AIR VOIDS	THICKNESS
MAINLINE AND RAMP RESURFACING		
POLYMERIZED HOT-MIX ASPHALT SURFACE COURSE, STONE MATRIX ASPHALT, N80	3.5% @ 80 GYR	2"
POLYMERIZED HOT-MIX ASPHALT BINDER COURSE, STONE MATRIX ASPHALT, N80	3.5% @ 80 GYR	2"
OUTSIDE SHOULDERS		
HOT-MIX ASPHALT BINDER COURSE, IL-19.0, N70	4% @ 70 GYR	2 1/2"
HOT-MIX ASPHALT SURFACE COURSE, MIX "D", N70 (IL 9.5mm)	4% @ 70 GYR	1 1/2"
PATCHING		
CLASS D PATCHES (HMA BINDER IL-25mm)	4% @ 105 GYR	10"
HMA REPLACEMENT OVER PATCHES (HMA BINDER IL-19mm)	4% @ 70 GYR	4"
TEMPORARY PAVEMENT		
TEMP PVMT (INTERSTATE) (HMA BINDER IL-19 mm)	4% @ 70 GYR	8 1/2"
HMA SURFACE COURSE, MIX "D", N70 (IL 9.5mm)	4% @ 70 GYR	1 1/2"

- THE UNIT WEIGHT USED TO CALCULATE ALL HOT-MIX SURFACE MIXTURES IS 112 LBS/SQ YD/INCH THICKNESS.
- THE "AC TYPE" FOR POLYMERIZED HMA MIXES SHALL BE "SBS/SBR PG 70-22" AND FOR NON-POLYMERIZED HMA THE "AC TYPE" SHALL BE "PG 64-22" UNLESS MODIFIED BY DISTRICT ONE SPECIAL PROVISIONS. FOR "PERCENT OF RAP" SEE DISTRICT ONE SPECIAL PROVISIONS.
- PAY FOR PERFORMANCE PERTAINS TO THE MAINLINE SMA SURFACE AND SMA BINDER ONLY.
- IF THE CONTRACTOR CHOOSES TO USE CONCRETE FOR THE TEMPORARY PAVEMENT, THE THICKNESS SHALL BE 10".

SPECIALTY ITEM	CODE NUMBER	ITEM	UNIT	TOTAL QUANTITY	CONSTRUCTION TYPE CODE		
					0005	0014	0005
	20100110	TREE REMOVAL (6 TO 15 UNITS DIAMETER)	UNIT	370			370
	20100210	TREE REMOVAL (OVER 15 UNITS DIAMETER)	UNIT	405			405
	20101300	TREE PRUNING (1 TO 10 INCH DIAMETER)	EACH	40			40
	20101350	TREE PRUNING (OVER 10 INCH DIAMETER)	EACH	51			51
	21101605	TOPSOIL FURNISH AND PLACE, 2"	SQ YD	2,335			2,335
	25000210	SEEDING, CLASS 2A	ACRE	3.5			3.5
	25000310	SEEDING, CLASS 4	ACRE	37.0			37.0
	25000400	NITROGEN FERTILIZER NUTRIENT	POUND	1,395			1,395
	25000500	PHOSPHORUS FERTILIZER NUTRIENT	POUND	1,395			1,395
	25000600	POTASSIUM FERTILIZER NUTRIENT	POUND	1,395			1,395
	25000750	MOWING	ACRE	45.0			45.0
	25003210	INTERSEEDING, CLASS 2A	ACRE	12.0			12.0
	25100115	MULCH, METHOD 2	ACRE	3.0			3.0
	25100630	EROSION CONTROL BLANKET	SQ YD	325			325
	28000250	TEMPORARY EROSION CONTROL SEEDING	POUND	300			300
	40600100	BITUMINOUS MATERIALS (PRIME COAT)	GALLON	36,976	36,976		
	40600300	AGGREGATE (PRIME COAT)	TON	643	643		
	40600400	MIXTURE FOR CRACKS, JOINTS, AND FLANGEWAYS	TON	28	28		
	40600895	CONSTRUCTING TEST STRIP	EACH	2	2		
	40600982	HOT-MIX ASPHALT SURFACE REMOVAL - BUTT JOINT	SQ YD	251	251		
	40601005	HOT-MIX ASPHALT REPLACEMENT OVER PATCHES	TON	82	82		
	40603085	HOT-MIX ASPHALT BINDER COURSE, IL-19.0, N70	TON	5,853	5,853		
	40603148	POLYMERIZED HOT-MIX ASPHALT BINDER COURSE, STONE MATRIX ASPHALT, N80	TON	16,028	16,028		
	40603153	POLYMERIZED HOT-MIX ASPHALT SURFACE COURSE, STONE MATRIX ASPHALT, N80	TON	16,028	16,028		
	40603340	HOT-MIX ASPHALT SURFACE COURSE, MIX "D", N70	TON	3,955	3,955		
	44000100	PAVEMENT REMOVAL	SQ YD	155	155		
	44000157	HOT-MIX ASPHALT SURFACE REMOVAL, 2"	SQ YD	3,374	3,374		
	44000185	HOT-MIX ASPHALT SURFACE REMOVAL, 4"	SQ YD	184,879	184,879		
	44002216	HOT-MIX ASPHALT REMOVAL OVER PATCHES, 4"	SQ YD	345	345		
	44201349	CLASS C PATCHES, TYPE I, 10 INCH	SQ YD	30	30		
	44201353	CLASS C PATCHES, TYPE II, 10 INCH	SQ YD	20	20		
	44201357	CLASS C PATCHES, TYPE III, 10 INCH	SQ YD	20	20		
	44201359	CLASS C PATCHES, TYPE IV, 10 INCH	SQ YD	50	50		
	44201781	CLASS D PATCHES, TYPE I, 10 INCH	SQ YD	20	20		
	44201765	CLASS D PATCHES, TYPE II, 10 INCH	SQ YD	22	22		

SPECIALTY ITEM	CODE NUMBER	ITEM	UNIT	TOTAL QUANTITY	CONSTRUCTION TYPE CODE		
					0005	0014	0005
	44201769	CLASS D PATCHES, TYPE III, 10 INCH	SQ YD	238	238		
	44201771	CLASS D PATCHES, TYPE IV, 10 INCH	SQ YD	50	50		
	50157300	PROTECTIVE SHIELD	SQ YD	394		394	
	58700300	CONCRETE SEALER	SQ FT	38,590		38,590	
	64200105	SHOULDER RUMBLE STRIPS	FOOT	75,829	75,829		
	67000600	ENGINEER'S FIELD LABORATORY	CAL MO	9	9		
	67100100	MOBILIZATION	L SUM	1	1		
	70106800	CHANGEABLE MESSAGE SIGN	CAL MO	20	20		
	70300240	TEMPORARY PAVEMENT MARKING- LINE 6"	FOOT	13,113	13,113		
	70301000	WORK ZONE PAVEMENT MARKING REMOVAL	SQ FT	3275	3275		
	70400100	TEMPORARY CONCRETE BARRIER	FOOT	10,150	10,150		
	70400200	RELOCATE TEMPORARY CONCRETE BARRIER	FOOT	2,963	2,963		
	72000100	SIGN PANEL - TYPE 1	SQ FT	362	362		
	72000200	SIGN PANEL - TYPE 2	SQ FT	485	485		
	72000300	SIGN PANEL - TYPE 3	SQ FT	3,849	3,849		
	72400100	REMOVE SIGN PANEL ASSEMBLY- TYPE A	EACH	12	12		
	72400200	REMOVE SIGN PANEL ASSEMBLY- TYPE B	EACH	22	22		
	72400320	REMOVE SIGN PANEL- TYPE 2	SQ FT	150	150		
	72400330	REMOVE SIGN PANEL- TYPE 3	SQ FT	3,801	3,801		
	72600100	MILE POST MARKER ASSEMBLY	EACH	17	17		
	72900200	METAL POST - TYPE B	FOOT	158	158		
	73000100	WOOD SIGN SUPPORT	FOOT	1703	1703		
	73700100	REMOVE GROUND MOUNTED SIGN SUPPORT	EACH	57	57		
	78000200	THERMOPLASTIC PAVEMENT MARKING - LINE 4"	FOOT	75,331	75,331		
	78000500	THERMOPLASTIC PAVEMENT MARKING - LINE 8"	FOOT	10,035	10,035		
	78000600	THERMOPLASTIC PAVEMENT MARKING - LINE 12"	FOOT	2,341	2,341		
	78004210	PREFORMED PLASTIC PAVEMENT MARKING, TYPE B-INLAID- LINE 4"	FOOT	221	221		
	78004220	PREFORMED PLASTIC PAVEMENT MARKING, TYPE B-INLAID- LINE 5"	FOOT	10,183	10,183		
	78004240	PREFORMED PLASTIC PAVEMENT MARKING, TYPE B-INLAID- LINE 8"	FOOT	239	239		
	78008210	EPOXY PAVEMENT MARKING- LINE 4"	FOOT	9800	9800		
	78008210	POLYUREA PAVEMENT MARKING TYPE I- LINE 4"	FOOT	7,718	7,718		
	78008220	POLYUREA PAVEMENT MARKING TYPE I- LINE 5"	FOOT	1,214	1,214		
	78008240	POLYUREA PAVEMENT MARKING TYPE I- LINE 8"	FOOT	5,680	5,680		
	78008250	POLYUREA PAVEMENT MARKING TYPE I- LINE 12"	FOOT	808	808		
	78100100	RAISED REFLECTIVE PAVEMENT MARKER	EACH	1,058	1,058		

USER NAME = jsupencheck	DESIGNED - LLS/JG	REVISED -
PLOT SCALE = 10:1	DRAWN - PMS/DC	REVISED -
PLOT DATE = 28-JAN-2011	CHECKED - JAL	REVISED -
	DATE - 01/21/2011	REVISED -



STATE OF ILLINOIS
DEPARTMENT OF TRANSPORTATION

SUMMARY OF QUANTITIES

SHEET NO. 1 OF 2 SHEETS STA. N/A TO STA. N/A

F.A.I. RTE.	SECTION	COUNTY	TOTAL SHEETS	SHEET NO.
80	99-1-RS-4	WILL	116	3
FED. ROAD DIST. NO. 1 ILLINOIS FED. AID PROJECT			CONTRACT NO. 60M63	

Rev. 2-25-11

Rev.

SPECIALTY ITEM	CODE NUMBER	ITEM	UNIT	URBAN 100% STATE			CONSTRUCTION TYPE CODE		
				TOTAL QUANTITY	0005	0014	0005	0005	0014
*	78100105	RAISED REFLECTIVE PAVEMENT MARKER (BRIDGE)	EACH	24	24				
*	78100300	REPLACEMENT REFLECTOR	EACH	105	105				
*	78200530	BARRIER WALL MARKERS, TYPE C	EACH	812	812				
*	78300100	PAVEMENT MARKING REMOVAL	SQ FT	39,888	39,888				
*	78300200	RAISED REFLECTIVE PAVEMENT MARKER REMOVAL	EACH	1,076	1,076				
*	81012400	CONDUIT IN TRENCH, 1 1/4" DIA., PVC	FOOT	36	36				
*	81012800	CONDUIT IN TRENCH, 3" DIA., PVC	FOOT	20	20				
*	81021350	CONDUIT PUSHED, 3" DIA., PVC	FOOT	21	21				
*	81400200	HEAVY-DUTY HANDHOLE	EACH	2	2				
*	81900200	TRENCH AND BACKFILL FOR ELECTRICAL WORK	FOOT	36	36				
*	87900200	DRILL EXISTING HANDHOLD	EACH	2	2				
*	88600100	DETECTOR LOOP, TYPE I	FOOT	160	160				
	K0029624	WEED CONTROL, TEASEL	GALLON	7.5				7.5	
	K0029629	WEED CONTROL, BROADLEAF IN TURF	POUND	5				5	
	K0029632	WEED CONTROL, NON-SELECTIVE AND NON-RESIDUAL	GALLON	5				5	
	K0029634	WEED CONTROL, PRE-EMERGENT GRANULAR HERBICIDE	POUND	150				150	
	K0036120	MULCH PLACEMENT 4"	SQ YD	7,000				7,000	
	K1003660	MOWING CYCLES	EACH	2				2	
	X0300780	PIEZO ELECTRIC SENSOR CABLE IN CONDUIT	FOOT	196	196				
	X0323014	ELECTRIC CABLE IN CONDUIT, CONOGA-30003	FOOT	360	360				
	X0323015	PIEZO ELECTRIC AXLE SENSOR, CLASS II	FOOT	22	22				
	X0323016	ELECTRIC CABLE IN CONDUIT # 14-7STRAND XHHW XLP-600V	FOOT	46	46				
	X0323818	CLEANING AND PAINTING EXPOSED REBAR	SQ FT	1,580		1,580			
	X0325085	TEMPORARY PAVEMENT (INTERSTATE)	SQ YD	155	155				
	X0325222	WEED CONTROL, BASAL TREATMENT	GALLON	11				11	
*	X0326844	ROADSIDE DETECTOR	EACH	16	16				
*	X0326846	ATMS INTERFACE	L SUM	1	1				
	X0327075	MOWING (SPECIAL)	SQ YD	62,920				62,920	
	X2010300	TREE REMOVAL (UNDER 8 UNITS DIAMETER)	UNIT	195				195	
	X2503315	INTERSEEDING, CLASS 4A (MODIFIED)	ACRE	60.0				60.0	
	X4063500	PRELIMINARY TEST STRIP	EACH	2	2				
	X501730.5	PROTECTIVE SHIELD (PERMANENT)	SQ YD	80		80			
	X6030205	FRAMES AND GRATES TO BE ADJUSTED (SPECIAL)	EACH	2	2				

SPECIALTY ITEM	CODE NUMBER	ITEM	UNIT	URBAN 100% STATE			CONSTRUCTION TYPE CODE		
				TOTAL QUANTITY	0005	0014	0005	0005	0014
	X6700410	ENGINEER'S FIELD OFFICE, TYPE A (SPECIAL)	CAL MO	9	9				
	X7010240	TRAFFIC CONTROL SURVEILLANCE (SPECIAL)	CAL DA	150	150				
	X7011015	TRAFFIC CONTROL AND PROTECTION (EXPRESSWAYS)	L SUM	1	1				
	X7030030	WET REFLECTIVE TEMPORARY TAPE TYPE III, 4 INCH	FOOT	170,106	170,106				
	X7030035	WET REFLECTIVE TEMPORARY TAPE TYPE III, 5 INCH	FOOT	15,964	15,964				
	X7030045	WET REFLECTIVE TEMPORARY TAPE TYPE III, 8 INCH	FOOT	14,060	14,060				
	X7030050	WET REFLECTIVE TEMPORARY TAPE TYPE III, 12 INCH	FOOT	2,535	2,535				
	Z0001800	APPROACH SLAB REPAIR (PARTIAL DEPTH)	SQ YD	5				5	
	Z0005876	BONDED PREFORMED JOINT SEALER, 4 INCH	FOOT	92				92	
	Z0010605	CLEANING DRAINAGE SYSTEM	L SUM	1				1	
	Z0012754	STRUCTURAL REPAIR OF CONCRETE (DEPTH EQUAL TO OR LESS THAN 5 INCHES)	SQ FT	276				276	
	Z0012755	STRUCTURAL REPAIR OF CONCRETE (DEPTH GREATER THAN 5 INCHES)	SQ FT	27				27	
	Z0013798	CONSTRUCTION LAYOUT	L SUM	1	1				
	Z0015802	PLUG EXISTING DECK DRAINS	EACH	12				12	
	Z0016001	DECK SLAB REPAIR (FULL DEPTH, TYPE I)	SQ YD	4				4	
	Z0016002	DECK SLAB REPAIR (FULL DEPTH, TYPE II)	SQ YD	9				9	
	Z0016200	DECK SLAB REPAIR (PARTIAL)	SQ YD	308				308	
	Z0021904	SILICONE JOINT SEALER, 1"	FOOT	106				106	
	Z0021907	SILICONE JOINT SEALER, 1.75"	FOOT	128				128	
	Z0021914	SILICONE JOINT SEALER, 2.75"	FOOT	146				146	
	Z0026346	NIGHTTIME WORK ZONE LIGHTING	L SUM	1	1				
	Z0030250	IMPACT ATTENUATORS, TEMPORARY (NON-REDIRECTIVE), TEST LEVEL 3	EACH	3	3				
	Z0030280	IMPACT ATTENUATORS, TEMPORARY (SEVERE USE, NARROW), TEST LEVEL 3	EACH	1	1				
	Z0030350	IMPACT ATTENUATORS, RELOCATE (NON-REDIRECTIVE), TEST LEVEL 3	EACH	4	4				
	Z0030850	TEMPORARY INFORMATION SIGNING	SQ FT	1846	1846				
	Z0034105	MATERIAL TRANSFER DEVICE	TON	32,056	32,056				
	Z0064800	SELECTIVE CLEARING	UNIT	42				42	
	Z0076600	TRAINEES	HOURL						
	K0029614	WEED CONTROL, AQUATIC	GALLON	13				13	
*	84200600	REMOVAL OF LIGHTING UNIT, NO SALVAGE	EACH	5	5				
*	X8570000	SMART TRAFFIC MONITORING SYSTEM	L SUM	1	1				
*	X0327184	ROADSIDE DETECTOR COUNT STATION	UNIT	16	16				
*	X0327206	DATA SERVER	L SUM	1	1				
*	X0327185	ROADSIDE DETECTOR AND COUNT STATION MONTHLY MAINTENANCE	CAL MO	9	9				

DESIGNED - LLS/JG	REVISED -
DRAWN - PMS/DC	REVISED -
CHECKED - JAL	REVISED -
DATE - 01/21/2011	REVISED -



**STATE OF ILLINOIS
DEPARTMENT OF TRANSPORTATION**

SUMMARY OF QUANTITIES

SCALE: N.T.S. SHEET NO. 2 OF 2 SHEETS STA. N/A TO STA. N/A

F.A.I. RTE.	SECTION	COUNTY	TOTAL SHEETS	SHEET NO.
80	99-1-RS-4	WILL	116	4
FED. ROAD DIST. NO. 1 ILLINOIS FED. AID PROJECT			CONTRACT NO. 60M63	

Rev. 2-25-11

LOCATION					POLYMERIZED HMA SURFACE COURSE, SMA, N80	POLYMERIZED HMA BINDER COURSE, SMA, N80	HMA SURFACE COURSE, MIX "D", N70	HMA BINDER COURSE, IL-19.0, N70	HMA SURFACE REMOVAL 2" (SEE NOTE 1)	HMA SURFACE REMOVAL 4"	SHOULDER RUMBLE STRIP	TEMPORARY PAVEMENT (INTERSTATE) (SEE NOTE 1)	PAVEMENT REMOVAL (SEE NOTE 1)
ALIGNMENT	DIRECTION	DESCRIPTION	STATION	STATION	(TON)	(TON)	(TON)	(TON)	(SQ YD)	(SQ YD)	(FOOT)	(SQ YD)	(SQ YD)
I-80	EB	MAINLINE	88+58.91	95+00.00	273.57	273.57	42.14	70.23	0.00	2944.23	641.09	0.00	0
I-80	EB	MAINLINE	95+00.00	110+00.00	576.81	576.81	143.60	239.33	0.00	6859.59	2652.00	0.00	0
I-80	EB	MAINLINE	110+00.00	125+00.00	598.64	598.64	143.55	239.24	0.00	7053.87	3000.00	0.00	0
I-80	EB	MAINLINE	125+00.00	140+00.00	609.87	609.87	132.79	221.32	0.00	7026.14	3000.00	0.00	0
I-80	EB	MAINLINE	140+00.00	155+00.00	591.80	591.80	121.54	202.56	0.00	6730.83	3000.00	0.00	0
I-80	EB	MAINLINE	155+00.00	170+00.00	594.78	594.78	118.91	198.19	0.00	6726.18	3000.00	0.00	0
I-80	EB	MAINLINE	170+00.00	185+00.00	591.94	591.94	154.87	258.12	0.00	7128.95	3000.00	0.00	0
I-80	EB	MAINLINE	185+00.00	200+00.00	589.32	589.32	148.37	247.29	0.00	7028.12	3000.00	0.00	0
I-80	EB	MAINLINE	200+00.00	215+00.00	582.08	582.08	140.98	234.96	0.00	6875.48	3000.00	0.00	0
I-80	EB	MAINLINE	215+00.00	230+00.00	583.45	583.45	147.12	245.19	0.00	6960.72	3000.00	0.00	0
I-80	EB	MAINLINE	230+00.00	245+00.00	591.49	591.49	136.18	228.96	0.00	6902.31	3000.00	0.00	0
I-80	EB	MAINLINE	245+00.00	247+13.80	84.08	84.08	19.60	32.67	0.00	984.05	427.60	0.00	0
I-80	EB	MAINLINE	250+06.20	260+00.00	386.99	386.99	103.40	172.33	0.00	4686.16	1987.60	0.00	0
I-80	EB	MAINLINE	260+00.00	269+36.65	417.33	417.33	123.53	99.33	570.81	4435.62	1392.35	0.00	0
I-80	EB	MAINLINE	269+65.81	275+00.00	203.83	203.83	84.67	86.74	291.32	2439.54	921.30	154.26	154.26
I-80	EB	MAINLINE	275+00.00	285+04.56	430.54	430.54	152.56	135.55	635.99	4812.27	1797.42	0.00	0
I-80	EB	MAINLINE	288+26.23	290+00.00	96.57	96.57	20.60	13.53	111.44	958.88	173.77	0.00	0
I-80	EB	MAINLINE	290+00.00	305+00.00	633.07	633.07	205.32	181.98	858.37	6952.23	2272.99	0.00	0
I-80	EB	MAINLINE	305+00.00	316+63.83	570.25	570.25	144.80	108.40	712.17	5865.83	1380.71	0.00	0
I-80	EB	MAINLINE	317+66.40	320+00.00	85.74	85.74	25.22	22.98	102.08	929.63	467.20	0.00	0
I-80	EB	MAINLINE	320+00.00	335+00.00	575.55	575.55	210.59	224.65	91.82	6743.52	3000.00	0.00	0
I-80	EB	MAINLINE	335+00.00	357+23.60	802.47	802.47	186.78	311.30	0.00	9,388.53	4,447.20	0.00	0.00
I-80	EB	MAINLINE	397+44.40	398+66.40	47.82	47.82	10.25	17.08	0.00	549.00	244.00	0.00	0.00
I-80	EB	MAINLINE	398+66.40	419+00.00	733.90	733.90	170.82	284.70	0.00	8,586.31	4,067.20	0.00	0.00
I-80	EB	MAINLINE	419+00.00	449+00.00	1,082.67	1,082.67	252.00	420.00	0.00	12,666.67	6,000.00	0.00	0.00
I-80	EB	MAINLINE	449+00.00	479+00.00	1,024.05	1,024.05	238.36	397.26	0.00	11,980.94	5,675.18	0.00	0.00
I-80	EB	MAINLINE	479+00.00	500+58.80	779.09	779.09	181.34	302.23	0.00	9,114.93	4,317.60	0.00	0.00
I-80	EB	MAINLINE	500+58.80	504+82.80	215.02	215.02	27.70	46.17	0.00	2,226.00	424.00	0.00	0.00
I-80	EB	MAINLINE	504+82.80	505+00.00	6.21	6.21	0.98	1.63	0.00	67.08	17.20	0.00	0.00
I-80	EB	MAINLINE	505+00.00	517+26.70	442.70	442.70	126.61	211.02	0.00	5,459.97	2,060.16	0.00	0.00
I-80	EB	MAINLINE	517+26.70	520+35.50	176.77	176.77	25.94	43.23	0.00	1,887.11	308.80	0.00	0.00
I-80	EB	MAINLINE	520+35.50	521+95.30	92.47	92.47	13.42	22.37	0.00	985.43	159.80	0.00	0.00
LARKN-BB	EB	RAMP	2+49.55	3+08.29	12.43	12.43	4.93	8.22	0.00	169.69	0.00	0.00	0.00
I-80	EB	MAINLINE	521+95.30	531+71.10	352.16	352.16	106.53	177.55	0.00	4,412.49	1,566.47	0.00	0.00
I-80	EB	MAINLINE	531+71.10	533+00.00	78.04	78.04	8.42	14.04	0.00	797.03	128.90	0.00	0.00
I-80	EB	MAINLINE	533+00.00	541+74.10	414.98	414.98	57.11	95.18	0.00	4,385.07	1,748.20	0.00	0.00
I-80	EB	MAINLINE	541+74.10	544+48.53	99.04	99.04	23.05	38.42	0.00	1,158.70	548.86	0.00	0.00
TOTAL					16,028	16,028	3,955	5,852	3,374	184,879	75,828	154	154

NOTES

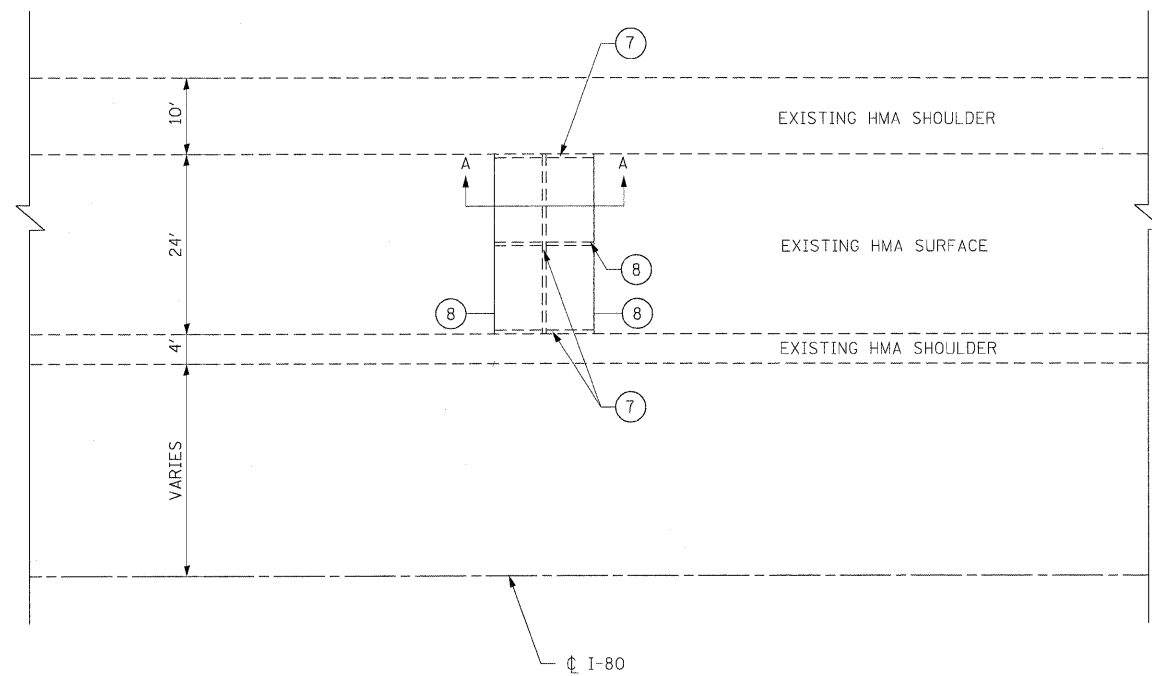
- FOR MAINTENANCE OF TRAFFIC (SEE MOT PLANS)

CONTRACT 60M63
TEMPORARY PAVEMENT MARKING AND TEMPORARY ATTENUATOR SCHEDULE

	PAVEMENT MARKING REMOVAL	WET REFLECTIVE TEMPORARY TAPE TYPE III, 4 INCH	WET REFLECTIVE TEMPORARY TAPE TYPE III, 5 INCH	WET REFLECTIVE TEMPORARY TAPE TYPE III, 8 INCH	WET REFLECTIVE TEMPORARY TAPE TYPE III, 12 INCH	WET REFLECTIVE TEMPORARY TAPE, TYPE III, LETTERS AND SYMBOLS	IMPACT ATTENUATORS, TEMPORARY (NON-REDIRECTIVE), TEST LEVEL 3	IMPACT ATTENUATORS, TEMPORARY (SEVERE USE, NARROW), TEST LEVEL 3	IMPACT ATTENUATORS, RELOCATE TEMPORARY (NON-REDIRECTIVE), TEST LEVEL 3
STAGE	(SQFT)	(FOOT)	(FOOT)	(FOOT)	(FOOT)	(SQFT)	(EACH)	(EACH)	(EACH)
1	0	11,363	1403	2,528	565	0	3	0	1
2	0	25,465	0	3,063	414	0	0	1	0
3	0	14,138	1517	2,108	414	0	0	0	3
RESURFACING	39,888	119,140	13,044	6,362	1,142	0	0	0	0
TOTAL	39,888	170,106	15,964	14,061	2,535	0	3	1	4

CONTRACT 60M63
EASTBOUND PAVEMENT MARKING SCHEDULE

LOCATION					THERMOPLASTIC PAVEMENT MARKINGS - LETTERS AND SYMBOLS	THERMOPLASTIC PAVEMENT MARKING - LINE 4"	THERMOPLASTIC PAVEMENT MARKING - LINE 8"	THERMOPLASTIC PAVEMENT MARKING - LINE 12"	THERMOPLASTIC PAVEMENT MARKING - LINE 24"	PREFORMED PLASTIC PAVEMENT MARKING, TYPE B - INLAID LINE 4"	PREFORMED PLASTIC PAVEMENT MARKING, TYPE B - INLAID LINE 5"	PREFORMED PLASTIC PAVEMENT MARKING, TYPE B - INLAID LINE 8"	POLYUREA PAVEMENT MARKING TYPE I - LINE 4"	POLYUREA PAVEMENT MARKING TYPE I - LINE 5"	POLYUREA PAVEMENT MARKING TYPE I - LINE 8"	POLYUREA PAVEMENT MARKING TYPE I - LINE 12"	RAISED REFLECTIVE PAVEMENT MARKER	RAISED REFLECTIVE PAVEMENT MARKER (BRIDGE)
ALIGNMENT	DIRECTION	DESCRIPTION	STATION	STATION	(SQFT)	(FOOT)	(FOOT)	(FOOT)	(FOOT)	(FOOT)	(FOOT)	(FOOT)	(FOOT)	(FOOT)	(FOOT)	(FOOT)	(EACH)	(EACH)
I80	EB	SHEET 1	88+59.21	95+00.00	0	640.8	645	144	0	118	179	0	0	0	0	0	20	0
I80	EB	SHEET 2	95+00.00	125+00.00	0	5832	178	227	0	42	757	0	0	0	0	0	76	0
I80	EB	SHEET 3	125+00.00	155+00.00	0	6000	0	85	0	0	751	0	0	0	0	0	74	0
I80	EB	SHEET 4	155+00.00	185+00.00	0	6000	0	92	0	0	750	0	0	0	0	0	76	0
I80	EB	SHEET 5	185+00.00	215+00.00	0	6000	0	99	0	0	743	0	0	0	0	0	76	0
I80	EB	SHEET 6	215+00.00	245+00.00	0	6000	0	92	0	0	743	0	0	0	0	0	74	0
I80	EB	SHEET 7	245+00.00	275+00.00	0	4372	1884	242	0	63	678	0	645	81	0	161	70	8
I80	EB	SHEET 8	275+00.00	305+00.00	0	4578	1914	299	0	0	671	151	297	60	296.25	100	74	6
I80	EB	SHEET 9	305+00.00	335+00.00	0	4829	1756	84	0	0	723	0	338	28	0	51	73	4
I80	EB	SHEET 10	335+00.00	361+00.00	0	4,447	0	83	0	0	556	0	466	94	413	0	56	0
I80	EB	SHEET 11	361+00.00	375+00.00	0	0	0	0	0	0	0	0	2,428	350	1,116	278	0	3
I80	EB	SHEET 12	375+00.00	389+00.00	0	0	0	0	0	0	0	0	2,365	350	1,305	208	0	0
I80	EB	SHEET 13	389+00.00	419+00.00	0	4,311	0	66	0	0	539	0	844	211	1,071	10	54	0
I80	EB	SHEET 14	419+00.00	449+00.00	0	6,000	0	90	0	0	750	0	0	0	0	0	75	0
I80	EB	SHEET 15	449+00.00	479+00.00	0	5,664	0	64	0	0	708	0	336	42	0	0	71	3
I80	EB	SHEET 16	479+00.00	505+00.00	0	4,768	694	73	0	0	650	0	0	0	36	0	73	0
I80	EB	SHEET 17	505+00.00	533+00.00	0	4,225	2005	588	0	0	700	88	0	0	1,442	0	87	0
I80	EB	SHEET 18	533+00.00	544+48.00	0	1,443	959	13	0	0	287	0	0	0	0	0	29	0
TOTAL					0	75,110	10,035	2,341	0	223	10,185	239	7,719	1,216	5,679	808	1,058	24



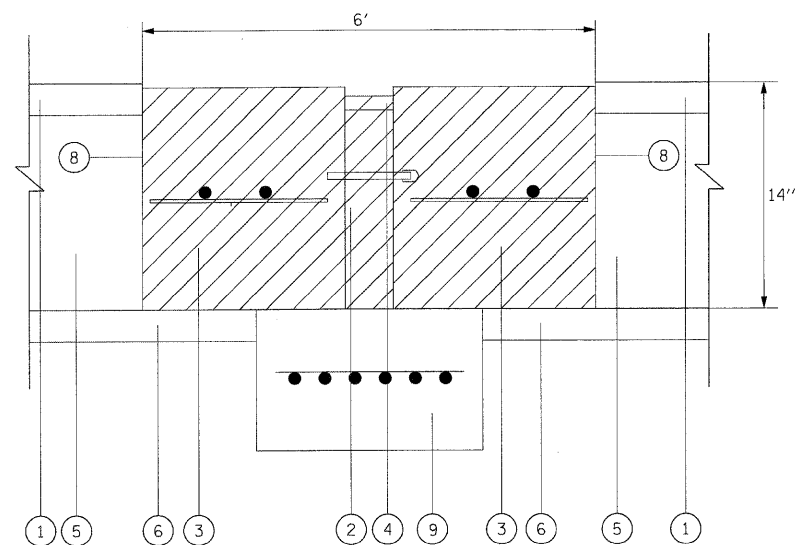
PLAN VIEW OF EXISTING PAVEMENT RELIEF JOINT

LEGEND

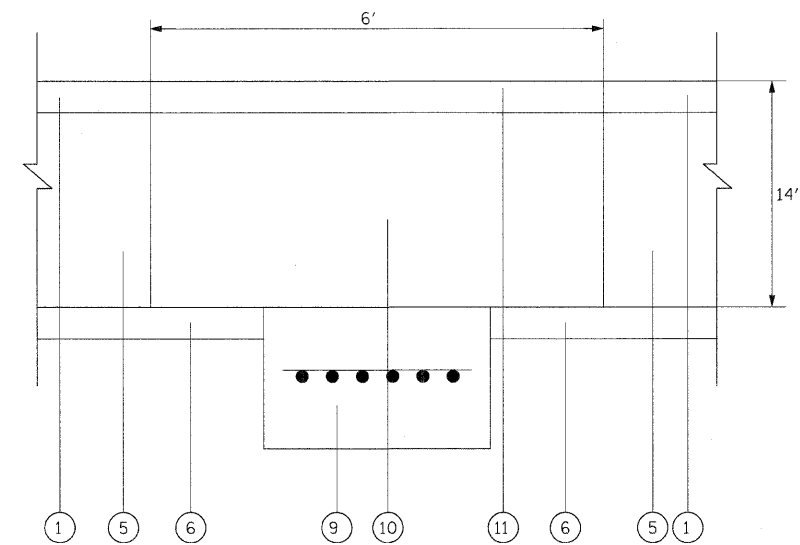
- ① EXISTING SMA OVERLAY, 4"
- ② EXISTING PREFORMED JOINT FILLER REMOVAL
- ③ EXISTING PORTLAND CEMENT CONCRETE REMOVAL
- ④ EXISTING HOT POURED JOINT SEALER REMOVAL
- ⑤ EXISTING P.C.C. PAVEMENT, 10"
- ⑥ EXISTING SUB-BASE
- ⑦ WHEEL SAW CUT (INCLUDED IN THE COST OF PAVEMENT PATCHING)
- ⑧ SAW CUT, FULL DEPTH (INCLUDED IN THE COST OF PAVEMENT PATCHING)
- ⑨ SLEEPER SLAB (NOT TO BE REMOVED OR DAMAGED)
- ⑩ PROPOSED CLASS D PATCHES, 10 INCH
- ⑪ HOT-MIX ASPHALT REPLACEMENT OVER PATCHES, 4"

NOTE:

REMOVAL AND DISPOSAL OF EXISTING PAVEMENT RELIEF JOINTS, AS SHOWN ON THE PLANS, WILL NOT BE PAID FOR SEPARATELY, BUT WILL BE CONSIDERED INCIDENTAL TO THE CLASS D PATCH REPLACEMENT AT THE SAME LOCATION.



SECTION A-A
EXISTING PAVEMENT RELIEF JOINT TO BE REMOVED (TYPICAL)



SECTION A-A
PROPOSED PAVEMENT RELIEF JOINT TO BE REPLACED BY CLASS D PATCH (TYPICAL)



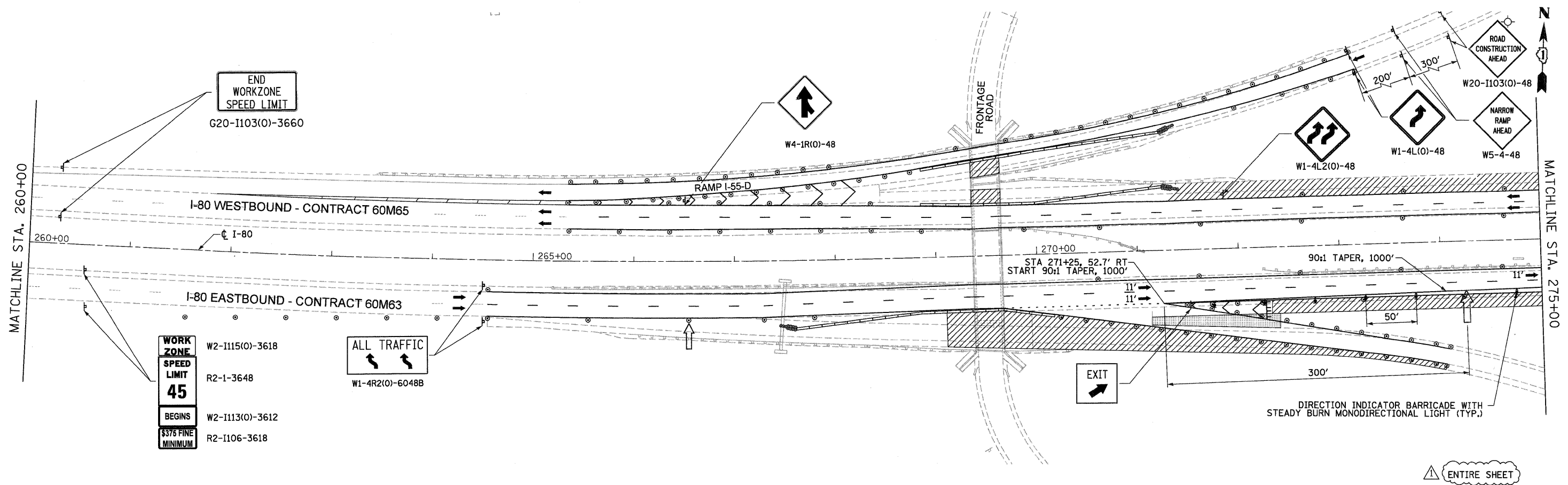
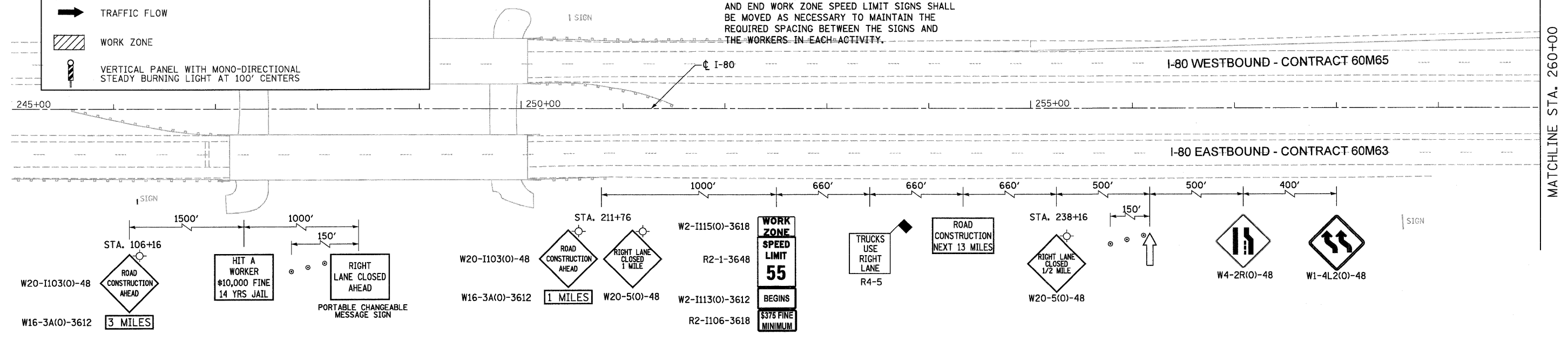
DESIGNED - LLS/JG	REVISED - 02/15/11 ADDENDUM A		STATE OF ILLINOIS DEPARTMENT OF TRANSPORTATION		PAVEMENT RELIEF JOINT REMOVAL AND REPLACEMENT DETAIL				F.A.I. RTE.	SECTION	COUNTY	TOTAL SHEETS	SHEET NO.
USER NAME = lsupencheck	DRAWN -								80	99-1-RS-4	WILL	116	30
PLOT SCALE = 12.5:1	CHECKED - JAL								CONTRACT NO. 60M63				
PLOT DATE = 14-FEB-2011	DATE - 01/21/2011								FED. ROAD DIST. NO. 1 ILLINOIS FED. AID PROJECT				
FILE NAME = IP_PWP\dms34560\1606M63-shr-detail1.dgn	REVISED -	SCALE: N.T.S.		SHEET NO. 1 OF 1 SHEETS	STA. N/A	TO STA. N/A							

LEGEND:

- TRAFFIC CONTROL SIGN
- ARROW BOARD
- TYPE II BARRICADE OR DRUM WITH MONO-DIRECTIONAL STEADY BURNING LIGHT @ 100 FT C-C ALONG ROADWAY (TANGENT), 50 FT CENTERS ALONG TAPERS AND 25 FT CENTERS ALONG RAMPS
- TRAFFIC FLOW
- WORK ZONE
- VERTICAL PANEL WITH MONO-DIRECTIONAL STEADY BURNING LIGHT AT 100' CENTERS

NOTES

1. ALL EASTBOUND WORK IS IN CONTRACT 60M63 AND ALL WESTBOUND WORK IS IN CONTRACT 60M65.
2. CONSTRUCTION SIGNS AND TEMPORARY PAVEMENT MARKINGS INSTALLED PER STAGE 1.
3. IDOT STANDARD 701400-05 SHALL BE FOLLOWED FOR CONSTRUCTION SIGNING PRIOR TO TAPER.
4. THE CONTRACTOR AT NO TIME SHALL CLOSE LANE 2 OF STAGED CONSTRUCTION AND SHALL NOT RESTRICT ACCESS TO OR FROM I-55.
5. ADVANCED SIGNING, WORK ZONE SPEED LIMIT SIGNS AND END WORK ZONE SPEED LIMIT SIGNS SHALL BE MOVED AS NECESSARY TO MAINTAIN THE REQUIRED SPACING BETWEEN THE SIGNS AND THE WORKERS IN EACH ACTIVITY.



ENTIRE SHEET

DESIGNED - LLS/JG	REVISION 1 - 02/15/11 ADDENDUM A
DRAWN - PMS/DC	REVISION 2 -
CHECKED - JAL	REVISION 3 -
DATE - 01/21/2011	REVISION 4 -



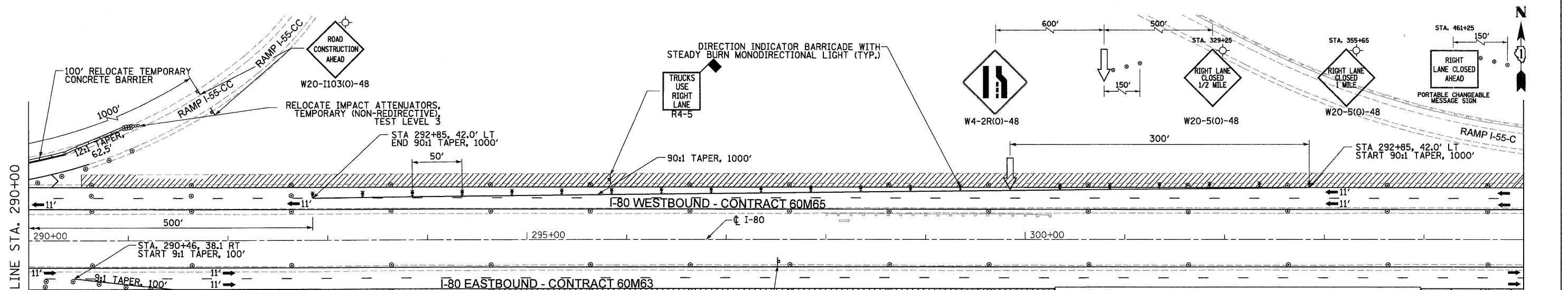
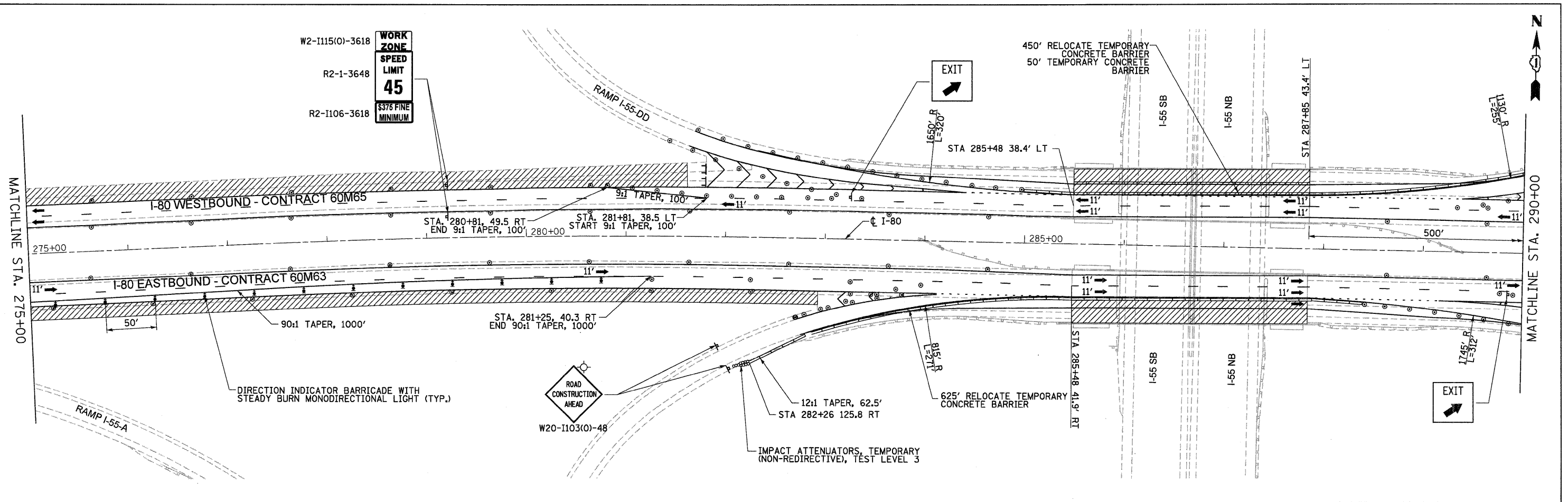
**STATE OF ILLINOIS
DEPARTMENT OF TRANSPORTATION**

**MAINTENANCE OF TRAFFIC - WEEKEND LANE CLOSURE DETAIL
I-80 MAINLINE**

SCALE: 1"=50' SHEET NO. 1 OF 2 SHEETS STA. 245+00 TO STA. 275+00

F.A.I. RTE.	SECTION	COUNTY	TOTAL SHEETS	SHEET NO.
80	99-1-RS-4	WILL	116	39
CONTRACT NO. 60M63			FED. ROAD DIST. NO. 1 ILLINOIS FED. AID PROJECT	

FILE NAME = IP_PWP\dms34568\0168M63-shr-MOT_Weekend Detail.01.dgn



NOTES

- ALL EASTBOUND WORK IS IN CONTRACT 60M63 AND ALL WESTBOUND WORK IS IN CONTRACT 60M65.
- CONSTRUCTION SIGNS AND TEMPORARY PAVEMENT MARKINGS INSTALLED PER STAGE 1
- IDOT STANDARD 701400-05 SHALL BE FOLLOWED FOR CONSTRUCTION SIGNING PRIOR TO TAPER
- THE CONTRACTOR AT NO TIME SHALL CLOSE LANE 2 OF STAGED CONSTRUCTION AND SHALL NOT RESTRICT ACCESS TO OR FROM I-55.

NOTES

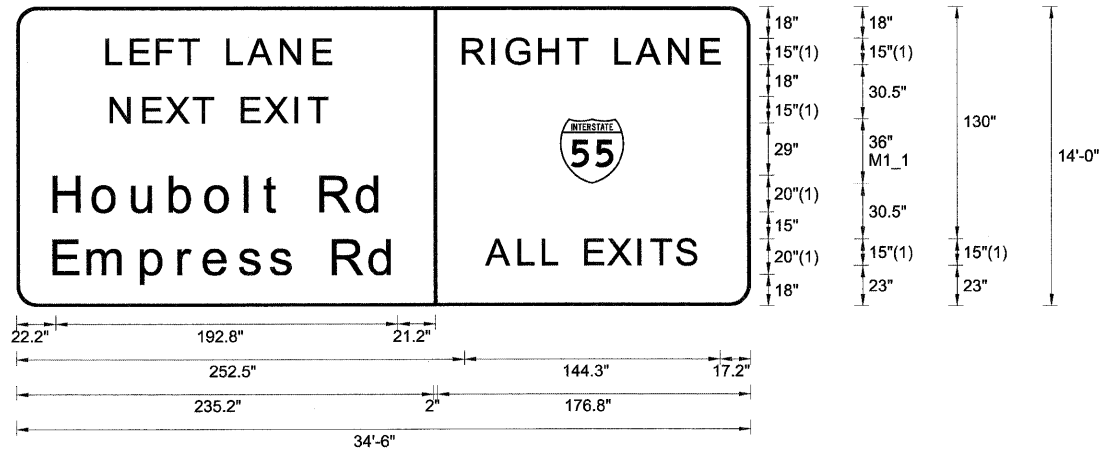
- ADVANCED SIGNING, WORK ZONE SPEED LIMIT SIGNS AND END WORK ZONE SPEED LIMIT SIGNS SHALL BE MOVED AS NECESSARY TO MAINTAIN THE REQUIRED SPACING BETWEEN THE SIGNS AND THE WORKERS IN EACH ACTIVITY.
- THE CONTRACTOR SHALL USE IDOT STANDARDS 701446-02, R2-1106-3618 701400-05, AND 701406-06 FOR WORK ON I-55, REFER TO STRUCTURAL PLANS. ALL TRAFFIC CONTROL, DEVICES, BARRICADES, DRUMS, LANE CLOSURES, TEMPORARY PAVEMENT MARKINGS, ETC. ALONG THE CROSS ROADS WITHIN THE CONTRACT LIMITS, UNLESS OTHERWISE SPECIFIED IN THE TRAFFIC CONTROL PLANS, SHALL NOT BE PAID FOR SEPARATELY, BUT SHALL BE INCLUDED IN THE LUMP SUM FOR "TRAFFIC CONTROL AND PROTECTION (EXPRESSWAY)".

LEGEND:

- TRAFFIC CONTROL SIGN
- ARROW BOARD
- TYPE II BARRICADE OR DRUM WITH MONO-DIRECTIONAL STEADY BURNING LIGHT @ 100 FT C-C ALONG ROADWAY (TANGENT), 50 FT CENTERS ALONG TAPERS AND 25 FT CENTERS ALONG RAMP
- TRAFFIC FLOW
- WORK ZONE
- VERTICAL PANEL WITH MONO-DIRECTIONAL STEADY BURNING LIGHT AT 100' CENTERS

ENTIRE SHEET

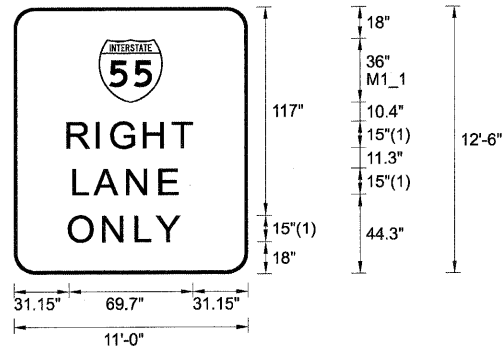
DESIGNED - LLS/JG	REVISED - 02/15/11 ADDENDUM A		STATE OF ILLINOIS DEPARTMENT OF TRANSPORTATION		MAINTENANCE OF TRAFFIC -- WEEKEND LANE CLOSURE DETAIL I-80 MAINLINE			F.A.I. RTE.	SECTION	COUNTY	TOTAL SHEETS	SHEET NO.
USER NAME = pskopek	DRAWN - PMS/DC							80	99-1-RS-4	WILL	116	40
PLOT SCALE = 5/8"=1'	CHECKED - JAL							CONTRACT NO. 60M63				
PLOT DATE = 15-FEB-2011	DATE - 01/21/2011							FED. ROAD DIST. NO. 1 ILLINOIS FED. AID PROJECT				
FILE NAME = IP_PWP\dms34560\0160M63-ah-MOT_Weekend Detail_02.dgn		SCALE: 1"=50'		SHEET NO. 2 OF 2 SHEETS		STA. 275+00 TO STA. 305+00						



FONT:
(1) ClearviewHwy-5-W

I-80 EASTBOUND - STAGE 2 TEMPORARY INFORMATION SIGN

STA. 211+70

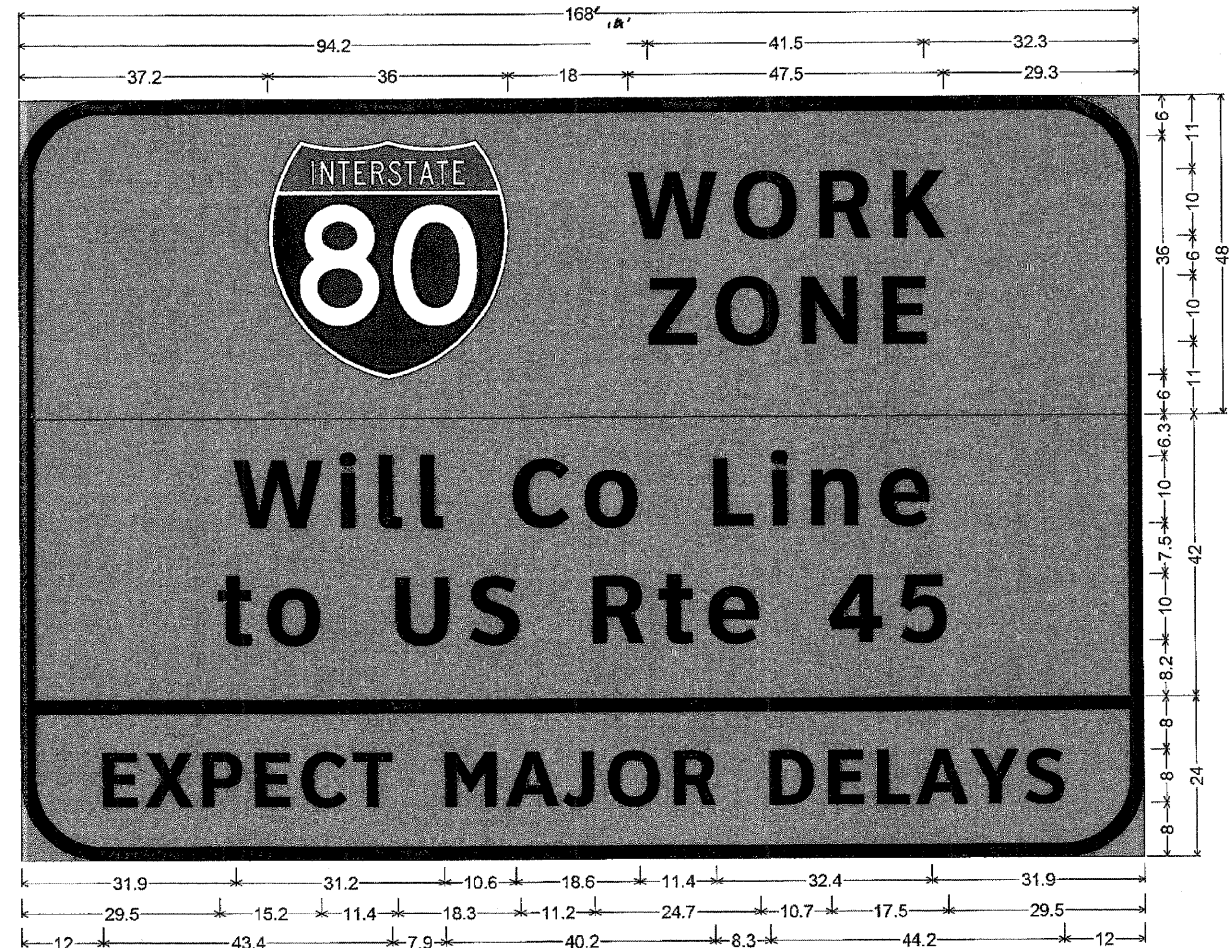


FONT:
(1) ClearviewHwy-5-W

I-80 EASTBOUND - STAGE 2 TEMPORARY INFORMATION SIGN

STA. 238+10
STA. 256+50

NOTE:
ALL STAND ALONE SIGNS



12.0" Radius, 2.0" Border, Black on Orange;
"WORK" ClearviewHwy-5-W; "ZONE" ClearviewHwy-5-W;
12.0" Radius, 2.0" Border, Black on Orange;
"Will Co Line" ClearviewHwy-5-W; "to US Rte 45" ClearviewHwy-5-W;
12.0" Radius, 2.0" Border, Black on Orange;
"EXPECT MAJOR DELAYS" ClearviewHwy-5-W-R;
Table of letter and object lefts.

W	O	R	K													
37.2	91.2	107.1	119.9													
Z	O	N	E													
94.2	104.3	117.1	129.4													
W	I	L	L	C	O	L	I	N	E							
31.9	47.9	53.8	60.0	73.7	84.5	103.7	112.4	118.4	128.7							
t	O	U	S	R	t	e	4	5								
29.5	37.0	56.1	67.1	85.6	95.4	103.0	121.0	131.7								
E	X	P	E	C	T	M	A	J	O	R	D	E	L	A	Y	S
12.0	18.4	27.0	34.9	41.9	49.6	63.3	72.5	80.9	87.7	97.5	111.8	120.6	128.0	133.9	142.1	150.2

TEMPORARY INFORMATION SIGNING

REFER TO MOT ADVANCED SIGNING PLAN FOR LOCATIONS

DESIGNED - LLS/JG	REVISED - 02/15/11 ADDENDUM A
DRAWN - PMS/DC	REVISED -
CHECKED - JAL	REVISED -
DATE - 01/21/2011	REVISED -



STATE OF ILLINOIS
DEPARTMENT OF TRANSPORTATION

MAINTENANCE OF TRAFFIC
TEMPORARY INFORMATION SIGNING

F.A.I. RTE.	SECTION	COUNTY	TOTAL SHEETS	SHEET NO.
80	99-1-RS-4	WILL	116	51
FED. ROAD DIST. NO. 1 ILLINOIS FED. AID PROJECT			CONTRACT NO. 60M63	

SCALE: SHEET NO. 1 OF 1 SHEETS STA. TO STA.

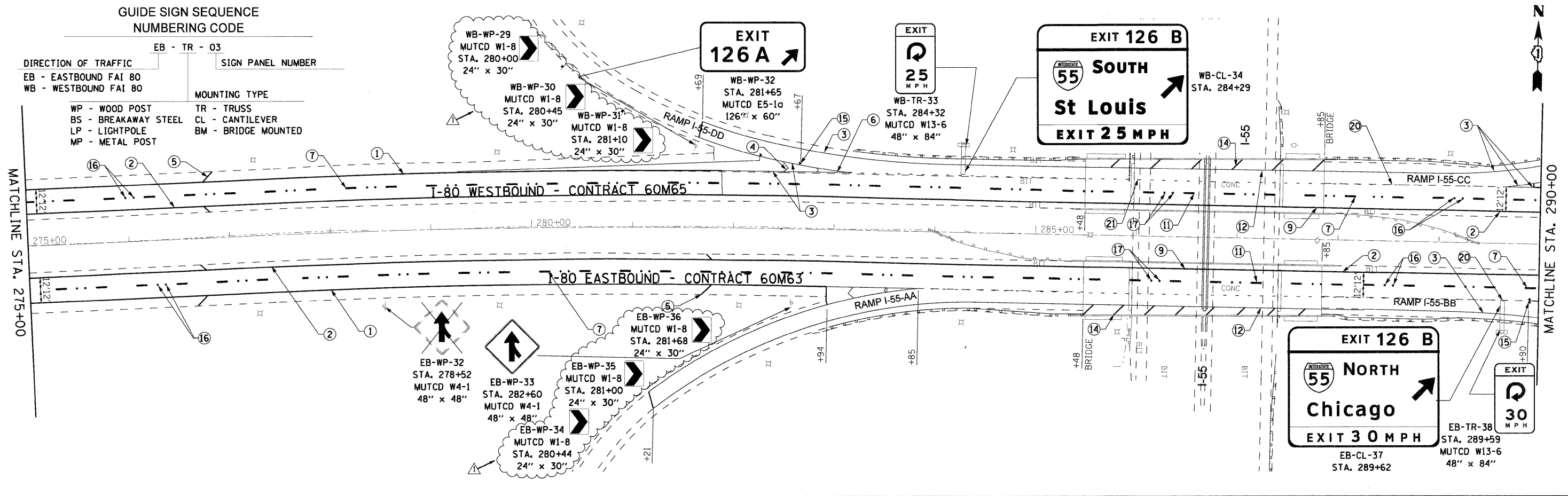
CONTRACT 60M63
SIGNING SCHEDULE

EASTBOUND SIGN SCHEDULE

SIGN NO.	STATION	LEGEND / DESCRIPTION	EXISTING PANEL DIMENSIONS		PROPOSED PANEL DIMENSIONS		REMOVE SIGN PANEL - TYPE 1	REMOVE SIGN PANEL - TYPE 2	REMOVE SIGN PANEL - TYPE 3	REMOVE SIGN PANEL ASSEMBLY TYPE A	REMOVE SIGN PANEL ASSEMBLY TYPE B	REMOVE GROUND MOUNTED SIGN SUPPORT	SIGN PANEL TYPE 1	SIGN PANEL TYPE 2	SIGN PANEL TYPE 3	MILE POST MARKER ASSEMBLY	METAL POST TYPE B	WOOD SIGN SUPPORT	REMOVAL OF LIGHTING UNIT, NO SALVAGE
			WIDTH (FT)	HEIGHT (FT)	WIDTH (FT)	HEIGHT (FT)	(SQ FT)	(SQ FT)	(SQ FT)	(EACH)	(EACH)	(EACH)	(SQ FT)	(SQ FT)	(SQ FT)	(EACH)	(FOOT)	(FOOT)	(EACH)
EB-MP-72	406+77	D10-3a			1.00	5.00										1.00			
EB-WP-73	415+99	SHARE THE DRIVE	9.00	5.00	9.00	5.00			45.00			2.00			45.00			37.2	
EB-MP-74	433+17	D10-3a			1.00	5.00										1.00			
EB-MP-75	435+28	D10-3	1.00	4.00						1.00		1.00							
EB-BS-76	447+71	EXITS 130 A-B 1 1/2 MILES	16.00	11.50	16.00	11.50			184.00						184.00				
EB-MP-77	459+57	D10-3a			1.00	5.00										1.00			
EB-WP-78	464+11 RT	OM3-R	1.00	3.00	1.00	3.00				1.00		1.00	3.00					15.1	
EB-WP-79	464+11 LT	OM3-L	1.00	3.00	1.00	3.00				1.00		1.00	3.00					16.1	
EB-WP-80	472+91	W3-5 RIGHT			4.00	4.00								16.00				32.2	
EB-WP-81	472+91	W3-5 LEFT			4.00	4.00								16.00				35.6	
EB-WP-82	472+91	RED METAL FLAG RIGHT			1.50	1.50							2.25						
EB-WP-83	472+91	RED METAL FLAG RIGHT			1.50	1.50							2.25						
EB-WP-82A	472+91	RED METAL FLAG LEFT			1.50	1.50							2.25						
EB-WP-83A	472+91	RED METAL FLAG LEFT			1.50	1.50							2.25						
EB-WP-84	472+91	SPEED ZONE AHEAD	4.00	6.00					24.00										
EB-WP-85	472+91	SPEED ZONE AHEAD	4.00	6.00					24.00										
EB-WP-86	474+91	ROCKDALE EXIT 130 A	10.00	5.00					50.00			2.00							
EB-WP-87	479+42	Off-Track Wagering Facility	17.00	5.00	17.00	5.00			85.00			2.00			85.00			34.1	
EB-BS-88	484+33	EXIT 130 A 1/2 MILE	15.00	12.50	15.00	12.50			187.50						187.50				
EB-MP-89	485+91	D10-3	1.00	4.00						1.00		1.00							
EB-MP-90	485+97	D10-3a			1.00	5.00										1.00			
EB-WP-91A	488+46	D9-2	2.50	2.50	2.50	2.50					1.00	1.00	6.25					17.2	
EB-WP-91	488+46		2.50	2.00	2.50	2.00							5.00						
EB-WP-92	489+56 RT	R2-1	4.00	5.00	4.00	5.00				1.00	1.00		20.00					18.7	
EB-WP-93	489+56 LT	R2-1	4.00	5.00	4.00	5.00				1.00	1.00		20.00					18.7	
EB-WP-94	492+59	R3-4	3.00	3.00	3.00	3.00				1.00	1.00		9.00					18.0	
EB-LP-95	495+50	UNIVERSITY OF ST. FRANCIS	5.00	5.00	5.00	5.00		25.00							25.00				
EB-TR-96	502+38	EXIT 131 1 1/4 MILES	11.81	8.37	14.00	9.50			98.85						133.00				1.0
EB-TR-97	502+38	EXIT 130 B 1/4 MILE	12.80	11.81	15.00	12.50			151.17						187.50				
EB-TR-98	502+38	EXIT 130 A IL-7 SOUTH	15.75	9.84	19.00	10.50			154.98						199.50				
EB-LP-99	502+34	W13-2	4.00	5.00	4.00	5.00		20.00					20.00						
EB-WP-100	502+64	R2-4a	4.00	8.00	4.00	8.00			32.00			1.00			32.00			21.0	
EB-WP-101	509+35	E5-1a	10.50	5.00	10.50	5.00			52.50			2.00			52.50			35.3	
EB-MP-102	512+37	D10-3a			1.00	5.00										1.00			
EB-WP-103	LARKN-AA 8+32	W1-8			2.00	2.50							5.00				9.0-0	16.0	
EB-WP-104	LARKN-AA 9+08	W1-8			2.00	2.50							5.00				9.0-0	16.0	
EB-WP-105	LARKN-AA 9+81	W1-8			2.00	2.50							5.00				9.0-0	16.0	
		ADDITIONAL LOOP CHEVRONS (7)			2.00	2.50							40.00				72.0-0	112.0	
EB-WP-106	515+41	W4-1	4.00	4.00	4.00	4.00				1.00	1.00		16.00					17.1	
EB-BM-107	518+40	EXIT 130 B IL-7 NORTH	15.75	9.84	19.00	13.00			154.98					247.00					1.0
EB-LP-108	522+01	W13-6	4.00	4.00	4.00	7.00		16.00					28.00						
EB-WP-109	523+36	E5-1a	10.50	5.00	10.50	5.00			52.50			2.00			52.50			35.7	
EB-WP-110	LARKN-BB 4+14	W1-8			2.00	2.50							5.00				9.0-0	16.0	
EB-WP-111	LARKN-BB 4+66	W1-8			2.00	2.50							5.00				9.0-0	16.0	
EB-WP-112	LARKN-BB 5+29	W1-8			2.00	2.50							5.00				9.0-0	16.0	
		ADDITIONAL LOOP CHEVRONS (8)			2.00	2.50							50.00				90.0-0	128.0	
EB-WP-113	528+10	W4-1	4.00	4.00	4.00	4.00				1.00	1.00		16.00					16.7	
EB-MP-114	538+06	D10-3	1.00	4.00						1.00		1.00							
EB-MP-115	538+77	D10-3a			1.00	5.00										1.00			
EB-WP-116	542+36	M3-2	3.00	1.50	3.00	1.50							4.50						
EB-WP-117	542+36	M1-1	3.00	3.00	3.00	3.00				1.00		1.00	9.00					22.6	
EB-LP-118	544+36	Midland Avenue	6.00	3.00	6.00	3.00		18.00						18.00					
TOTAL							0.00	150	3802	12	22	57	361	485	3849	17	679-158	823-1,703	5

GUIDE SIGN SEQUENCE
NUMBERING CODE

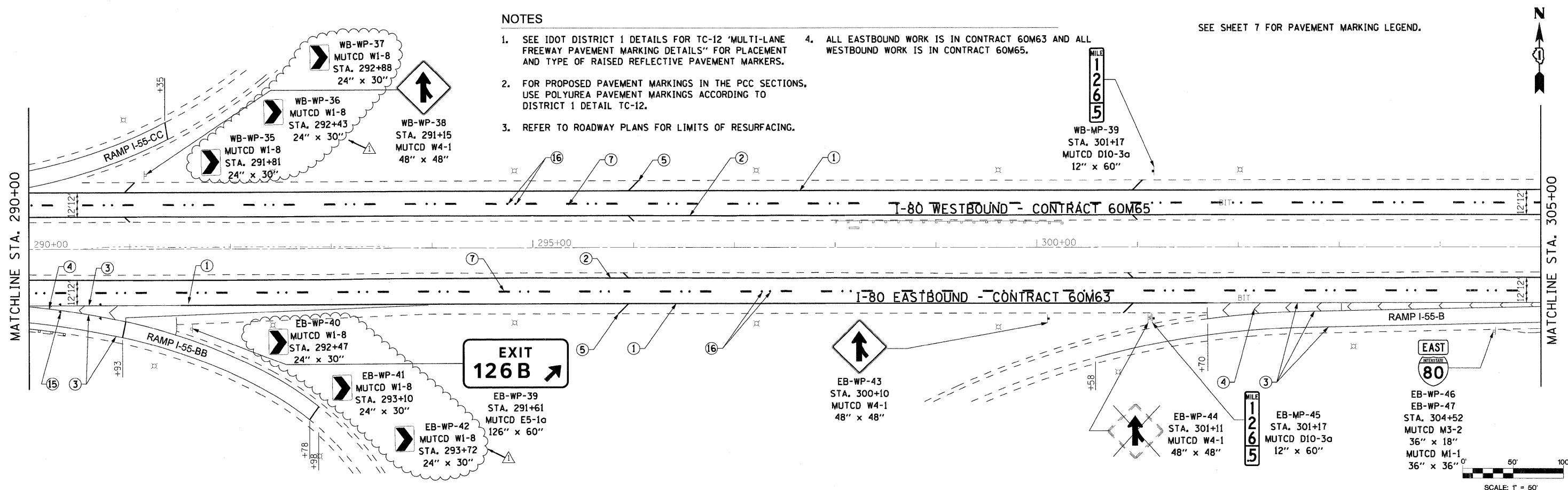
DIRECTION OF TRAFFIC		SIGN PANEL NUMBER	
EB - EASTBOUND FAI 80	WB - WESTBOUND FAI 80	EB - TR - 03	
MOUNTING TYPE			
WP - WOOD POST	BS - BREAKAWAY STEEL	TR - TRUSS	CL - CANTILEVER
LP - LIGHTPOLE	MP - METAL POST	BM - BRIDGE MOUNTED	



NOTES

- SEE IDOT DISTRICT 1 DETAILS FOR TC-12 'MULTI-LANE FREEWAY PAVEMENT MARKING DETAILS' FOR PLACEMENT AND TYPE OF RAISED REFLECTIVE PAVEMENT MARKERS.
- FOR PROPOSED PAVEMENT MARKINGS IN THE PCC SECTIONS, USE POLYUREA PAVEMENT MARKINGS ACCORDING TO DISTRICT 1 DETAIL TC-12.
- REFER TO ROADWAY PLANS FOR LIMITS OF RESURFACING.
- ALL EASTBOUND WORK IS IN CONTRACT 60M63 AND ALL WESTBOUND WORK IS IN CONTRACT 60M65.

SEE SHEET 7 FOR PAVEMENT MARKING LEGEND.



DESIGNED - LED	REVISION 02/15/11 ADDENDUM A
DRAWN - PAS	REVISION -
CHECKED - DT	REVISION -
DATE - 1/21/2011	REVISION -

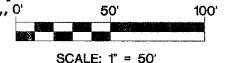


STATE OF ILLINOIS
DEPARTMENT OF TRANSPORTATION

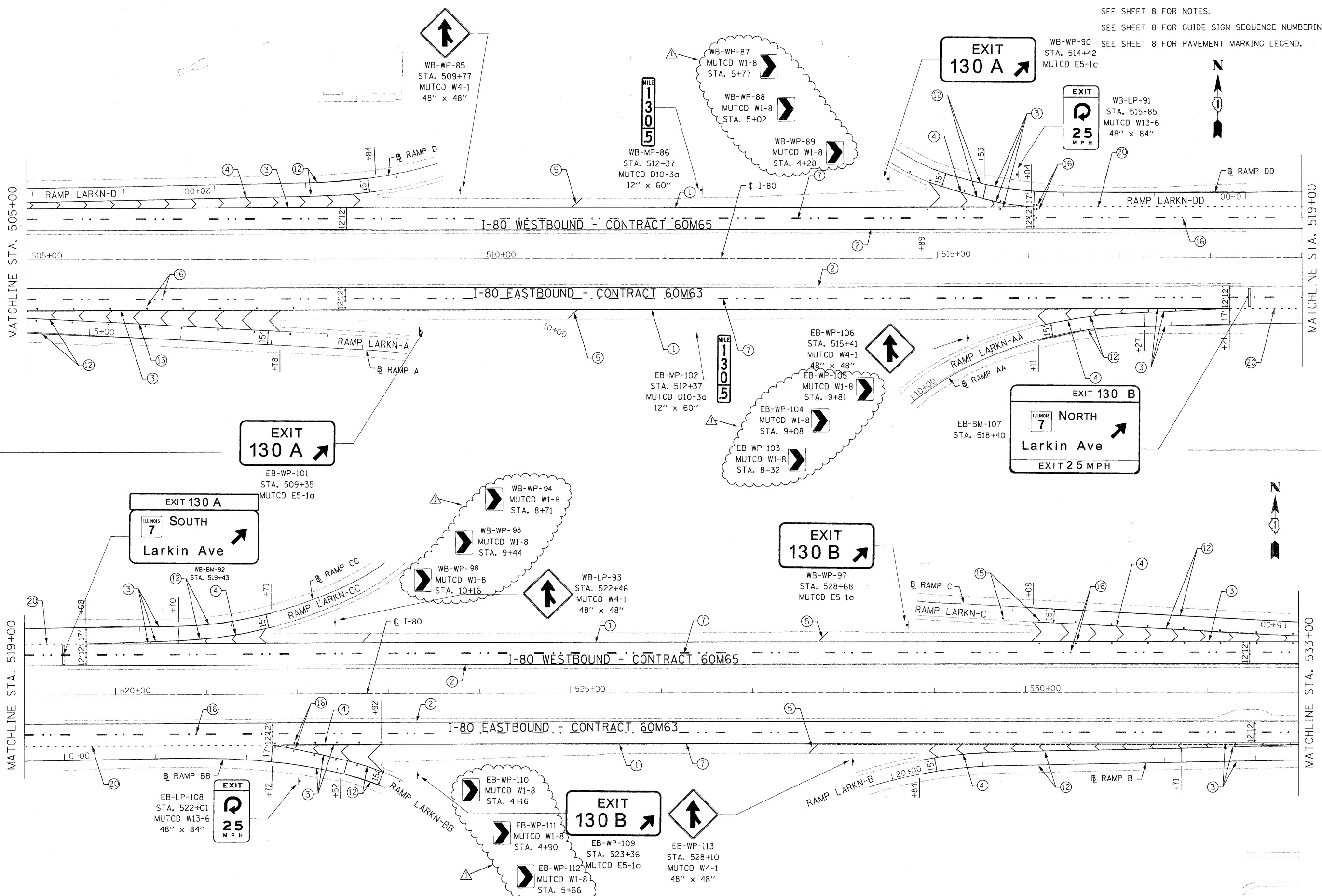
PAVEMENT MARKING AND SIGNING PLAN
I-80 MAINLINE

SCALE: 1"=50' SHEET NO. 8 OF 18 SHEETS STA. 275+00 TO STA. 305+00

F.A.I. RTE.	SECTION	COUNTY	TOTAL SHEETS	SHEET NO.
80	99-1-RS-4	WILL	116	61
CONTRACT NO. 60M63			ILLINOIS FED. AID PROJECT	



SEE SHEET 8 FOR NOTES.
 SEE SHEET 8 FOR GUIDE SIGN SEQUENCE NUMBERING CODE.
 SEE SHEET 8 FOR PAVEMENT MARKING LEGEND.



DESIGNED - JC	REVISED - 02/15/11 ADDENDUM A
DRAWN - JC	REVISED -
CHECKED - RR	REVISED -
DATE - 01/21/2011	REVISED -



**STATE OF ILLINOIS
 DEPARTMENT OF TRANSPORTATION**

PAVEMENT MARKING & SIGNING PLAN	
I-80 MAINLINE	
SCALE: 1"=50'	SHEET NO. 17 OF 18 SHEETS
STA. 505+00.00 TO STA. 533+00.00	

F.A.I. RTE. 80	SECTION 99-1-RS-4	COUNTY WILL	TOTAL SHEETS 116	SHEET NO. 70
CONTRACT NO. 60M63		ILLINOIS FED. AID PROJECT		

FILE NAME = c:\cadd\ib\pa\rrrose\pugreat.lakes\dms34565\DI160M66-sht-pmk09.dgn