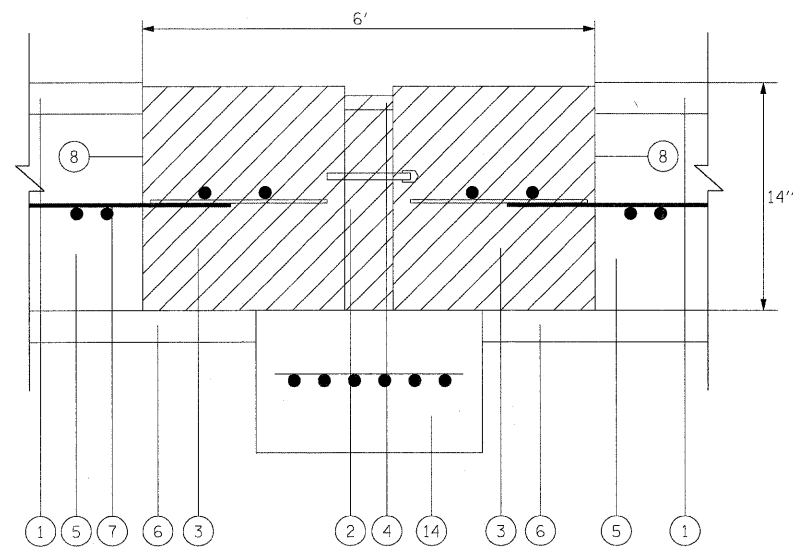
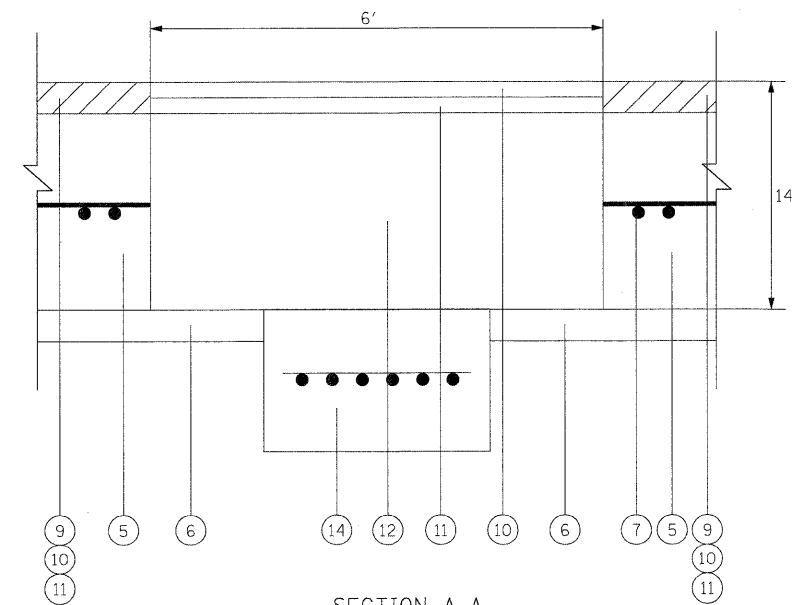


PLAN VIEW OF EXISTING PAVEMENT RELIEF JOINT

- LEGEND:**
- ① EXISTING SMA OVERLAY, 4"
 - ② EXISTING PREFORMED JOINT FILLER REMOVAL
 - ③ EXISTING PORTLAND CEMENT CONCRETE REMOVAL
 - ④ EXISTING HOT Poured JOINT SEALER REMOVAL
 - ⑤ EXISTING P.C.C. PAVEMENT, 10"
 - ⑥ EXISTING SUB-BASE
 - ⑦ EXISTING C.R.C. PAVEMENT REINFORCEMENT
 - ⑧ SAW CUT (FULL DEPTH)
 - ⑨ PROPOSED HOT-MIX ASPHALT REMOVAL, 4"
 - ⑩ POLYMERIZED HOT-MIX ASPHALT SURFACE COURSE
STONE MATRIX ASPHALT, N80, 2"
 - ⑪ POLYMERIZED HOT-MIX ASPHALT BINDER COURSE
STONE MATRIX ASPHALT, N80, 2"
 - ⑫ PROPOSED CLASS D PATCHES, 10 INCH
 - ⑬ WHEEL SAW CUT
 - ⑭ SLEEPER SLAB (NOT TO BE REMOVED OR DAMAGED)



SECTION A-A
EXISTING PAVEMENT RELIEF JOINT TO BE REMOVED (TYPICAL)



SECTION A-A
PROPOSED PAVEMENT RELIEF JOINT
TO BE REPLACED BY CLASS D PATCH (TYPICAL)

DESIGNED - LLS/JG	REVISED -		STATE OF ILLINOIS DEPARTMENT OF TRANSPORTATION		PAVEMENT RELIEF JOINT REMOVAL AND REPLACEMENT DETAIL				F.A.I. RTE.	SECTION	COUNTY	TOTAL SHEETS	SHEET NO.
USER NAME = dorinkovich	DRAWN -								REVISED -	80	99-1-RS-4	WILL	116
PLOT SCALE = 12.5:1	CHECKED - JAL				REVISED -	CONTRACT NO. 60M63					FED. ROAD DIST. NO. 1 ILLINOIS FED. AID PROJECT		
PLOT DATE = 20-JAN-2011	DATE = 01/21/2011				REVISED -	SCALE: 1"=50'	SHEET NO. 1 OF 1 SHEETS	STA. N/A	TO STA. N/A				
FILE NAME = IP_PWP\dms34568\162M63-shr-dat\1.s.dgn													