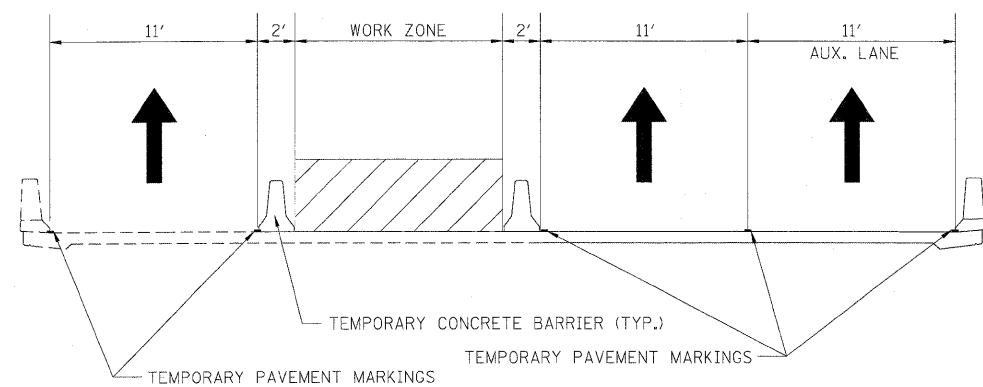
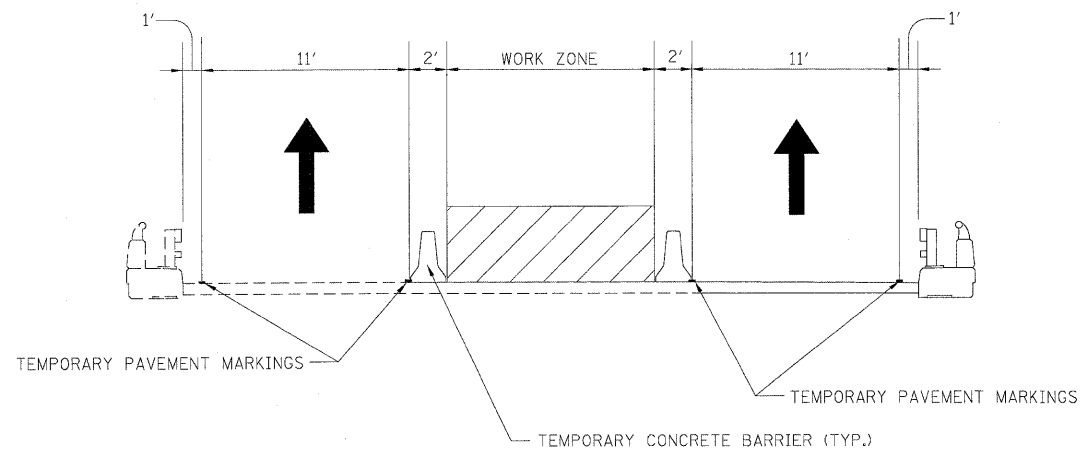


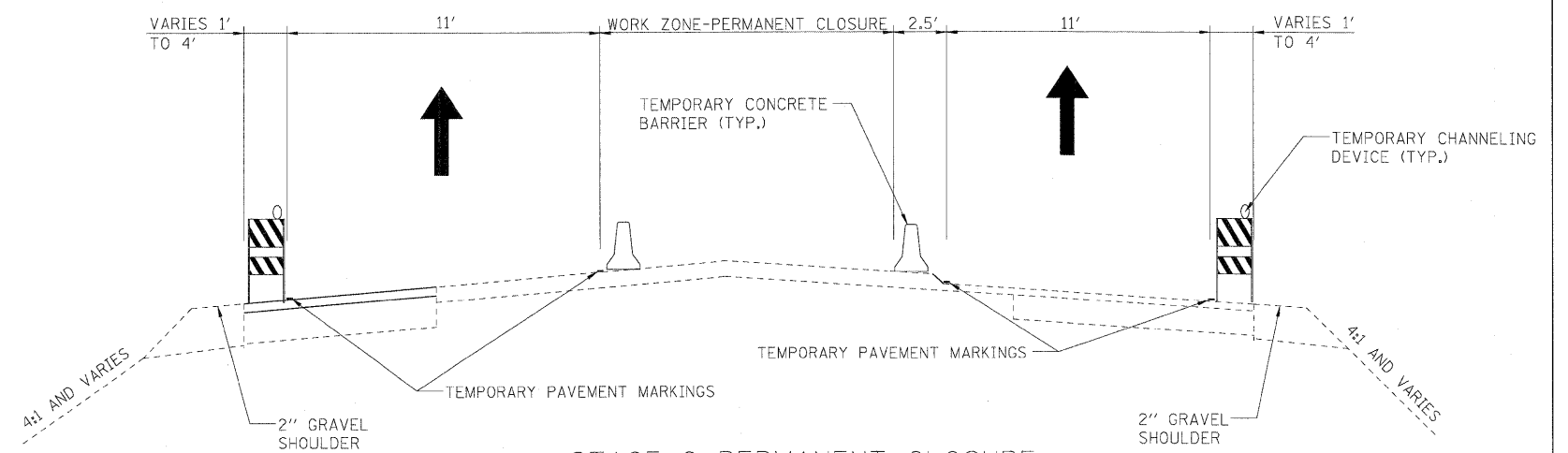
STAGE 2 CONSTRUCTION FOR EB I-80 OVER FRONTAGE ROAD
LOOKING EAST



STAGE 2 CONSTRUCTION FOR EB I-80 OVER I-55
LOOKING EAST



STAGE 2 CONSTRUCTION FOR EB I-80 OVER ROCK RUN CREEK
LOOKING EAST



STAGE 2 PERMANENT CLOSURE
LOOKING EAST

| | | | | | | | | | | | | |
|--|-------------------|-----------|--|---|--|-------------------------|----------------------|---|-----------|--------|--------------|-----------|
| USER NAME = dornikovich | DESIGNED - LLS/JG | REVISED - | | STATE OF ILLINOIS DEPARTMENT OF TRANSPORTATION | MAINTENANCE OF TRAFFIC - STAGE 2 TYPICAL SECTIONS | | | F.A.I. RTE. | SECTION | COUNTY | TOTAL SHEETS | SHEET NO. |
| PLOT SCALE = 1/8"=1' | DRAWN - PMS/DC | REVISED - | | | | | | 80 | 99-1-RS-4 | WILL | 116 | 41 |
| PLOT DATE = 20-JAN-2011 | CHECKED - JAL | REVISED - | | | CONTRACT NO. 60M63 | | | | | | | |
| FILE NAME = 1P_PWPdms34560\160M63-shr-MOT-STG-2-typ.01.dgn | DATE = 01/21/2011 | REVISED - | | | SCALE: N.T.S. | SHEET NO. 1 OF 1 SHEETS | STA. N/A TO STA. N/A | FED. ROAD DIST. NO. 1 [ILLINOIS] FED. AID PROJECT | | | | |