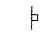
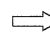



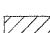
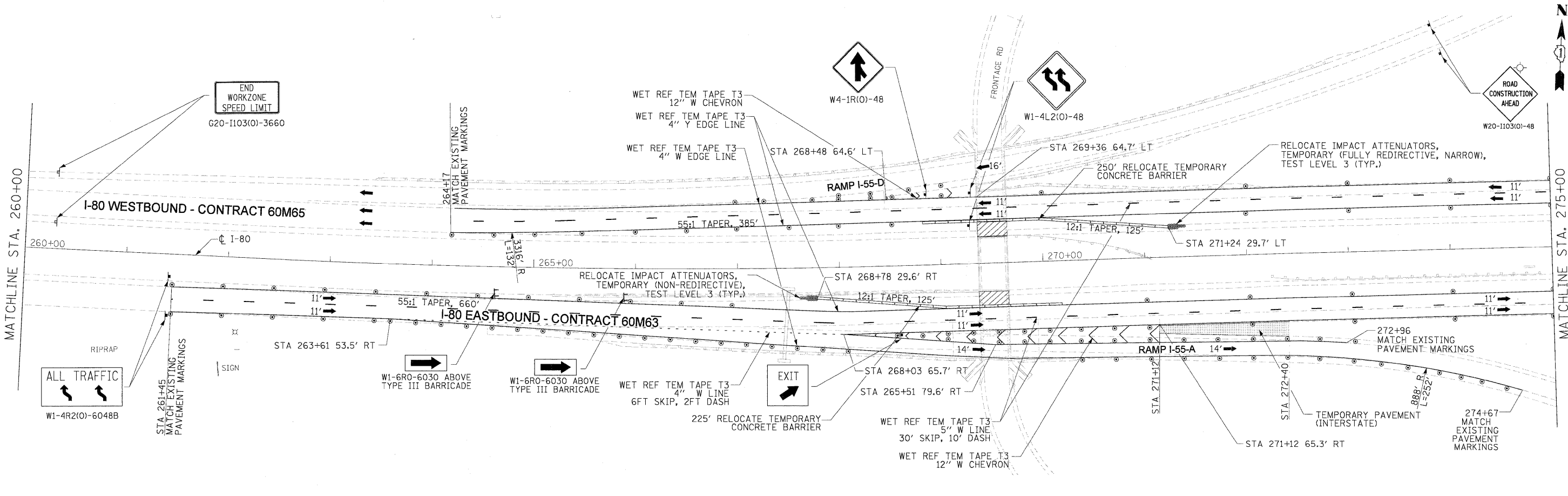
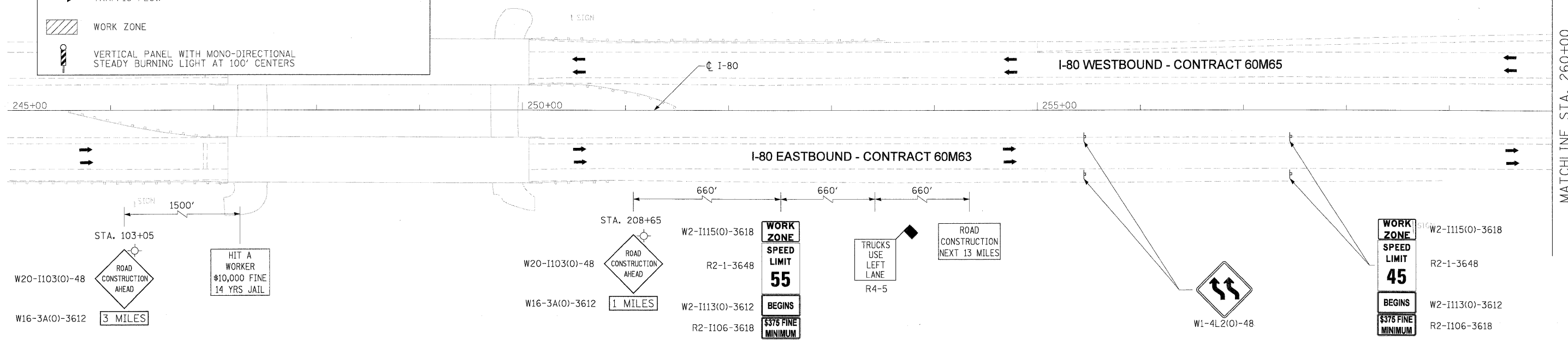



LEGEND:

-  TRAFFIC CONTROL SIGN
-  ARROW BOARD
-  TYPE II BARRICADE OR DRUM WITH MONO-DIRECTIONAL STEADY BURNING LIGHT @ 100 FT C-C ALONG ROADWAY (TANGENT), 50 FT CENTERS ALONG TAPERS AND 25 FT CENTERS ALONG RAMP
-  TRAFFIC FLOW
-  WORK ZONE
-  VERTICAL PANEL WITH MONO-DIRECTIONAL STEADY BURNING LIGHT AT 100' CENTERS

NOTES

1. ALL EASTBOUND WORK IS IN CONTRACT 60M63 AND ALL WESTBOUND WORK IS IN CONTRACT 60M65.
2. ADVANCE SIGNING, WORK ZONE SPEED LIMIT SIGNS AND END WORK ZONE SPEED LIMIT SIGNS SHALL BE MOVED AS NECESSARY TO MAINTAIN THE REQUIRED SPACING BETWEEN THE SIGNS AND THE WORKERS IN EACH ACTIVITY.



USER NAME = dornikovich PLOT SCALE = 50:1 PLOT DATE = 28-JAN-2011 FILE NAME = 1P_PWP\dms34560\DI60M63-shr-MOT-STG-3-plan_01.dgn	DESIGNED - LLS/JG DRAWN - PMS/DC CHECKED - JAL DATE - 01/21/2011	REVISED - REVISED - REVISED - REVISED -		STATE OF ILLINOIS DEPARTMENT OF TRANSPORTATION	MAINTENANCE OF TRAFFIC - STAGE 3 I-80 MAINLINE	F.A.I. RTE. 80 SECTION 99-1-RS-4 COUNTY WILL TOTAL SHEETS 116 SHEET NO. 48 CONTRACT NO. 60M63 FED. ROAD DIST. NO. 1 (ILLINOIS) FED. AID PROJECT
SCALE: 1"=50' SHEET NO. 1 OF 3 SHEETS STA. 245+00 TO STA. 275+00						