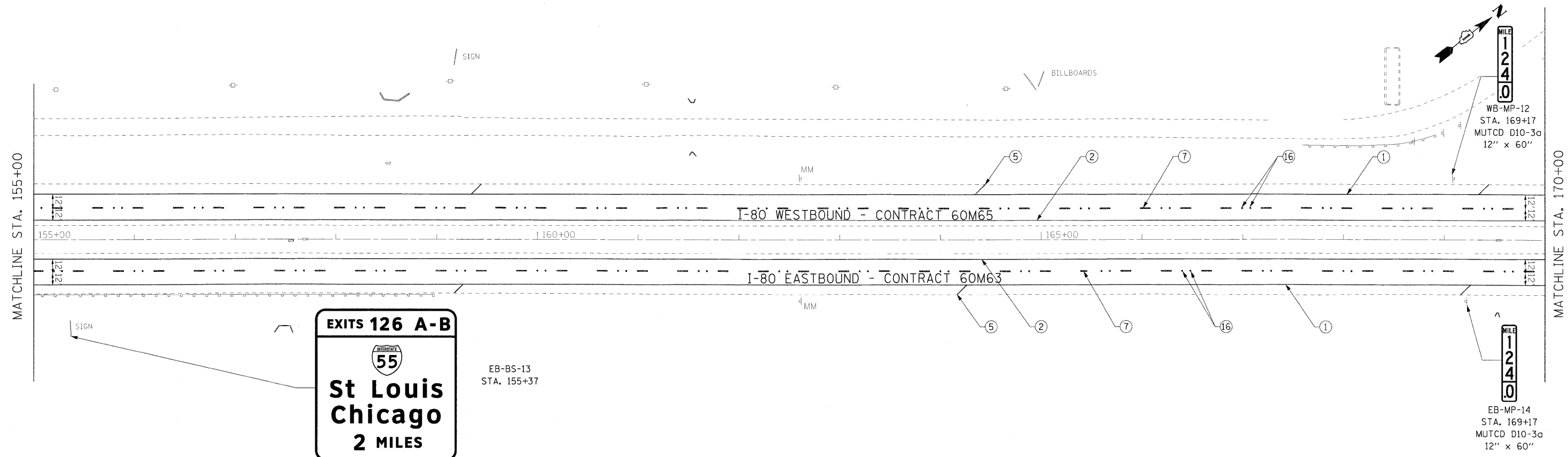


MATCHLINE STA. 155+00

MATCHLINE STA. 170+00

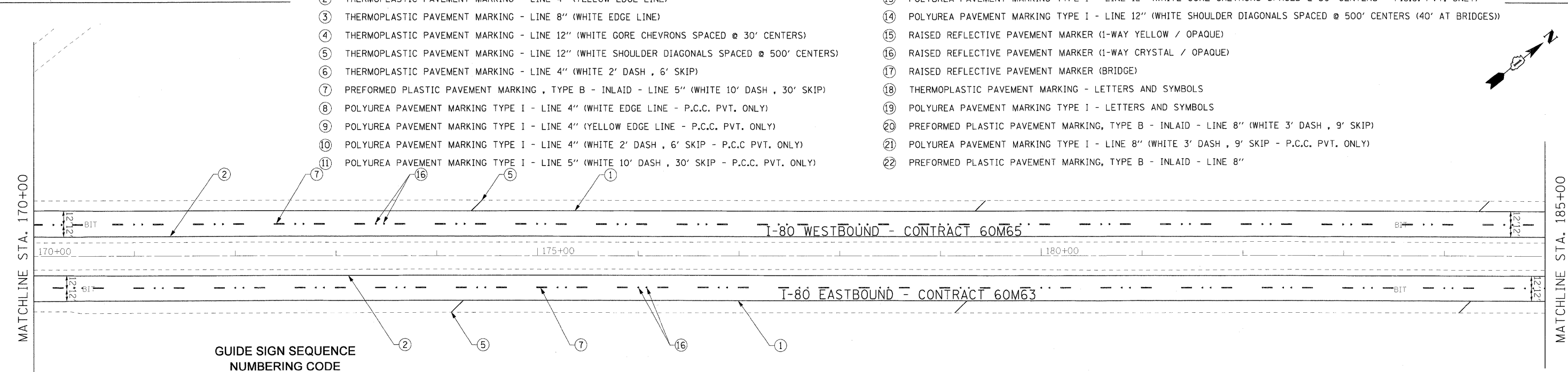


- ① THERMOPLASTIC PAVEMENT MARKING - LINE 4" (WHITE EDGE LINE)
- ② THERMOPLASTIC PAVEMENT MARKING - LINE 4" (YELLOW EDGE LINE)
- ③ THERMOPLASTIC PAVEMENT MARKING - LINE 8" (WHITE EDGE LINE)
- ④ THERMOPLASTIC PAVEMENT MARKING - LINE 12" (WHITE GORE CHEVRONS SPACED @ 30' CENTERS)
- ⑤ THERMOPLASTIC PAVEMENT MARKING - LINE 12" (WHITE SHOULDER DIAGONALS SPACED @ 500' CENTERS)
- ⑥ THERMOPLASTIC PAVEMENT MARKING - LINE 4" (WHITE 2' DASH , 6' SKIP)
- ⑦ PREFORMED PLASTIC PAVEMENT MARKING , TYPE B - INLAID - LINE 5" (WHITE 10' DASH , 30' SKIP)
- ⑧ POLYUREA PAVEMENT MARKING TYPE I - LINE 4" (WHITE EDGE LINE - P.C.C. PVT. ONLY)
- ⑨ POLYUREA PAVEMENT MARKING TYPE I - LINE 4" (YELLOW EDGE LINE - P.C.C. PVT. ONLY)
- ⑩ POLYUREA PAVEMENT MARKING TYPE I - LINE 4" (WHITE 2' DASH , 6' SKIP - P.C.C PVT. ONLY)
- ⑪ POLYUREA PAVEMENT MARKING TYPE I - LINE 5" (WHITE 10' DASH , 30' SKIP - P.C.C. PVT. ONLY)

- ⑫ POLYUREA PAVEMENT MARKING TYPE I - LINE 8" (WHITE EDGE LINE - P.C.C. PVT. ONLY)
- ⑬ POLYUREA PAVEMENT MARKING TYPE I - LINE 12" (WHITE GORE CHEVRONS SPACED @ 30' CENTERS - P.C.C. PVT. ONLY)
- ⑭ POLYUREA PAVEMENT MARKING TYPE I - LINE 12" (WHITE SHOULDER DIAGONALS SPACED @ 500' CENTERS (40' AT BRIDGES))
- ⑮ RAISED REFLECTIVE PAVEMENT MARKER (1-WAY YELLOW / OPAQUE)
- ⑯ RAISED REFLECTIVE PAVEMENT MARKER (1-WAY CRYSTAL / OPAQUE)
- ⑰ RAISED REFLECTIVE PAVEMENT MARKER (BRIDGE)
- ⑱ THERMOPLASTIC PAVEMENT MARKING - LETTERS AND SYMBOLS
- ⑲ POLYUREA PAVEMENT MARKING TYPE I - LETTERS AND SYMBOLS
- ⑳ PREFORMED PLASTIC PAVEMENT MARKING, TYPE B - INLAID - LINE 8" (WHITE 3' DASH , 9' SKIP)
- ㉑ POLYUREA PAVEMENT MARKING TYPE I - LINE 8" (WHITE 3' DASH , 9' SKIP - P.C.C. PVT. ONLY)
- ㉒ PREFORMED PLASTIC PAVEMENT MARKING, TYPE B - INLAID - LINE 8"

MATCHLINE STA. 170+00

MATCHLINE STA. 185+00



GUIDE SIGN SEQUENCE NUMBERING CODE

EB - TR - 03

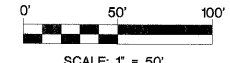
DIRECTION OF TRAFFIC: EB - EASTBOUND FAI 80, WB - WESTBOUND FAI 80

SIGN PANEL NUMBER

MOUNTING TYPE: WP - WOOD POST, BS - BREAKAWAY STEEL, LP - LIGHTPOLE, MP - METAL POST, TR - TRUSS, CL - CANTILEVER, BM - BRIDGE MOUNTED

NOTES

- SEE IDOT DISTRICT 1 DETAILS FOR TC-12 "MULTI-LANE FREEWAY PAVEMENT MARKING DETAILS" FOR PLACEMENT AND TYPE OF RAISED REFLECTIVE PAVEMENT MARKERS.
- FOR PROPOSED PAVEMENT MARKINGS IN THE PCC SECTIONS, USE POLYUREA PAVEMENT MARKINGS ACCORDING TO DISTRICT 1 DETAIL TC-12.
- REFER TO ROADWAY PLANS FOR LIMITS OF RESURFACING.
- ALL EASTBOUND WORK IS IN CONTRACT 60M63 AND ALL WESTBOUND WORK IS IN CONTRACT 60M65.



USER NAME *	DESIGNED - LED	REVISED -
PLOT SCALE =	DRAWN - PAS	REVISED -
PLOT DATE =	CHECKED - DT	REVISED -
FILE NAME *	DATE - 1/21/2011	REVISED -



STATE OF ILLINOIS
DEPARTMENT OF TRANSPORTATION

PAVEMENT MARKING AND SIGNING PLAN
I-80 MAINLINE

SCALE: 1"=50' SHEET NO. 4 OF 18 SHEETS STA. 155+00 TO STA. 185+00

F.A.I. RTE.	SECTION	COUNTY	TOTAL SHEETS	SHEET NO.
80	99-1-RS-4	WILL	116	57
				CONTRACT NO. 60M63
FED. ROAD DIST. NO. 1 ILLINOIS FED. AID PROJECT				