

INDEX OF SHEETS

- 1 TITLE SHEET
- 2 INDEX OF SHEETS, GENERAL NOTES, STATE STANDARDS, AND MIXTURE REQUIREMENTS
- 3 -4 SUMMARY OF QUANTITIES
- 5 -11 TYPICAL SECTIONS
- 12 -13 SCHEDULE OF QUANTITIES
- 14 SCHEMATIC DIAGRAM
- 15 -32 PROPOSED ROADWAY PLANS
- 33 -34 MAINTENANCE OF TRAFFIC -TYPICAL SECTIONS
- 35 -45 MAINTENANCE OF TRAFFIC - STAGE 1
- 46 -56 MAINTENANCE OF TRAFFIC - STAGE 2
- 57 MAINTENANCE OF TRAFFIC-TEMPORARY INFORMATION SIGNING
- 58 -59 SIGNING SCHEDULE OF QUANTITIES
- 60 -77 PAVEMENT MARKING AND SIGNING PLANS
- 78 -87 SIGN PANEL DETAILS
- 88 PAVEMENT RELIEF JOINT REMOVAL AND REPLACEMENT DETAIL
- 89 DISTRICT ONE- DETECTOR LOOP REPLACEMENT
- 90 TRAFFIC SENSOR DETAIL NEAR CHERRY HILL ROAD
- 91 -96 STRUCTURAL PLANS- MIDLAND AVENUE
- 97 -107 STRUCTURAL PLANS- CENTER STREET
- 108-142 STRUCTURAL PLANS- I-80 OVER DES PLAINES RIVER/US-6 (RAILROAD)
- 143-148 STRUCTURAL PLANS- IL RTE 53 (CHICAGO ST)
- 149-165 STRUCTURAL PLANS- I-80 OVER RAILROAD/GARDNER STREET
- 166-170 STRUCTURAL PLANS- HICKORY CREEK
- 171-176 STRUCTURAL PLANS- RICHARDS STREET
- 177-184 STRUCTURAL PLANS- EJ&E/ROWELL AVENUE
- 185-200 DISTRICT ONE DETAILS

DISTRICT ONE DETAILS

- BD22 PAVEMENT PATCHING FOR HMA SURFACED PAVEMENT
- BD32 BUTT JOINT AND HMA TAPER DETAILS
- BE600 ELECTRIC CONNECTION TO SIGN STRUCTURE SPAN TYPE
- BE601 ELECTRIC CONNECTION TO SIGN STRUCTURE CANTILEVER TYPE
- TC08 FREEWAY ENTRANCE AND EXIT RAMP CLOSURE DETAILS
- TC09 TRAFFIC CONTROL DETAILS FOR FREEWAY SINGLE & MULTI-LANE WEAVE
- TC12 MULTI-LANE FREEWAY PAVEMENT MARKING DETAILS
- TC16 PAVEMENT MARKING LETTERS AND SYMBOLS FOR TRAFFIC STAGING
- TC17 TRAFFIC CONTROL DETAILS FOR FREEWAY CLOSURES
- TC18 SIGNING FOR FLAGGING OPERATIONS AT WORK ZONE OPENINGS
- TC27 MILE POST MARKERS- GORE SIGNS MAJOR GUIDE SIGN LAYOUT- ARROWS
- TS05 DISTRICT ONE STANDARD TRAFFIC SIGNAL DESIGN DETAILS
- TS07 DETECTOR LOOP INSTALLATION DETAILS FOR ROADWAY RESURFACING

IDOT STANDARDS

- 000001 -06 STANDARD SYMBOLS, ABBREVIATIONS, AND PATTERNS
- 442201 -03 CLASS C AND D PATCHES
- 482011 -03 HMA SHLD. STRIPS/SHLDS WITH RESURFACING OR WIDENING AND RESURFACING PROJECTS
- 642001 -04 SHOULDER BUMBLE STRIPS
- 701101 -02 OFF-ROAD OPERATIONS, MULTILANE, 15' TO 24" FROM PAVEMENT EDGE
- 701400 -05 APPROACH TO LANE CLOSURE FREEWAY/EXPRESSWAY
- 701401 -06 LANE CLOSURE, FREEWAY/EXPRESSWAY
- 701411 -07 LANE CLOSURE, MULTILANE, AT ENTRANCE OR EXIT RAMP, FOR SPEEDS > OR = 45 MPH
- 701422 -03 LANE CLOSURES, MULTILANE, FOR SPEEDS >= 45 MPH TO 55 MPH
- 701501 -06 URBAN LANE CLOSURE, 2L, 2W, UNDIVIDED
- 701901 -01 TRAFFIC CONTROL DEVICES
- 704001 -06 TEMPORARY CONCRETE BARRIER
- 720001 -01 SIGN PANEL MOUNTING DETAILS
- 720006 -02 SIGN PANEL ERECTION DETAILS
- 720011 -01 METAL POSTS FOR SIGNS, MARKERS AND DELINEATORS
- 720021 -02 SIGN PANELS EXTRUDED ALUMINUM TYPE
- 729001 -01 APPLICATIONS OF TYPES A AND B METAL POSTS (FOR SIGNS & MARKERS)

GENERAL NOTES

1. BEFORE STARTING ANY EXCAVATION, THE CONTRACTOR SHALL CALL "JULIE" AT 800-892-0123 OR 811 FOR FIELD LOCATIONS OF BURIED UTILITIES.
2. THE CONTRACTOR SHALL COORDINATE WORK ACTIVITIES WITH UTILITY COMPANIES AS REQUIRED.
3. THE CONTRACTOR SHALL COORDINATE WORK ACTIVITIES WITH ADJACENT IDOT CONTRACTS 60M63, 60M65 AND 60M66.
4. THE CONTRACTOR WILL NOT BE ALLOWED TO SET UP A YARD OR FIELD OFFICE ON STATE PROPERTY WITHOUT WRITTEN PERMISSION FROM THE DEPARTMENT.
5. THE CONTRACTOR SHALL NOTIFY THE EXPRESSWAY TRAFFIC FIELD ENGINEER AT 847-705-4151 AT LEAST 72 HOURS PRIOR TO FINAL PAVEMENT MARKING INSTALLATION.
6. THE CONTRACTOR SHALL CONTACT THE DISTRICT ONE TRAFFIC CONTROL SUPERVISOR AT (847) 705-4151 A MINIMUM OF 72 HOURS IN ADVANCE OF BEGINNING WORK.
7. THE ALIGNMENTS AND SUPPORTING DATA SHOWN IN THE PLANS WAS DEVELOPED FROM PREVIOUS PLANIMETRICS AND AERIAL PHOTOGRAPHY FURNISHED BY THE DEPARTMENT AND IS NOT THE RESULT OF A GROUND SURVEY. THEREFORE, THE ALIGNMENTS AND SUPPORTING DATA SHOWN IN THE PLANS IS FOR REFERENCE PURPOSES ONLY. THE RELATIVE ACCURACY OF THE INFORMATION IS UNKNOWN AND CANNOT BE GUARANTEED. THE CONTRACTOR MAY BE REQUIRED TO ADJUST LAYOUT TO MATCH ACTUAL FIELD CONDITIONS AND THE INTENT OF THE PLANS.
8. THE CONTRACTOR SHALL USE CARE IN WORKING NEAR ANY AND ALL EXISTING ITEMS THAT WILL BE REPAIRED BY THE CONTRACTOR AT THE CONTRACTOR'S OWN EXPENSE.
9. DRAINAGE ADJUSTMENT, CLEANING OR RECONSTRUCTION LOCATIONS WILL BE DETERMINED IN THE FIELD BY THE ENGINEER.
10. EXISTING BROKEN FRAMES AND LIDS SHALL BE REMOVED AND DISPOSED OF BY THE CONTRACTOR AND SHALL BE REPLACED AS DIRECTED BY THE ENGINEER. REPLACEMENT FRAMES AND LIDS WILL BE PAID FOR IN ACCORDANCE WITH ARTICLE 109.04 OF THE STANDARD SPECIFICATIONS UNLESS A SEPARATE PAY ITEM HAS BEEN PROVIDED.
11. VERTICAL CLEARANCES OF BRIDGES SHALL BE MAINTAINED. THE CONTRACTOR SHALL VERIFY ALL BRIDGE CLEARANCE BEFORE AND AFTER CONSTRUCTION AND FURNISH RESULTS TO THE ENGINEER. THIS WORK SHALL BE INCLUDED IN THE LUMP SUM PRICE FOR CONSTRUCTION LAYOUT.
12. BEFORE BEGINNING ANY WORK, THE CONTRACTOR SHALL RETAIN AND RECORD FOR FUTURE REFERENCE, ALL EXISTING PAVEMENT MARKING LINES (AND RAISED REFLECTIVE PAVEMENT MARKINGS) IN ORDER THAT THESE LOCATIONS CAN BE RE-ESTABLISHED FOR STRIPING. EXACT LOCATIONS OF ALL PAVEMENT MARKING SHALL BE DIRECTED THE ENGINEER.
13. IT SHALL BE THE CONTRACTOR'S RESPONSIBILITY TO VERIFY ALL DIMENSIONS AND CONDITIONS EXISTING IN THE FIELD PRIOR TO CONSTRUCTION AND ORDERING MATERIALS.
14. THE CONTRACTOR SHALL TAKE ALL NECESSARY SAFETY PRECAUTIONS TO PROTECT AND PROVIDE ACCESS TO ABUTTING PROPERTY, UTILITIES, PEDESTRIANS, AND VEHICULAR TRAFFIC.
15. SAW CUTTING IS INCLUDED TO THE PROPOSED ITEM OF WORK SPECIFIED, UNLESS OTHERWISE SHOWN IN PLAN.
16. ALL PAVEMENT PATCHING LOCATIONS WILL BE DETERMINED IN THE FIELD BY THE ENGINEER.

GENERAL NOTES (CONTINUED)

17. WHEN MILLED PAVEMENT IS OPEN TO TRAFFIC, THE MAXIMUM GRADE DIFFERENTIAL BETWEEN TRAVEL LANES SHALL NOT EXCEED 1-1/2". WHEN NEWLY PLACED ASPHALT IS OPENED TO TRAFFIC, THE MAXIMUM LIFT DIFFERENCE BETWEEN THE TRAVEL LANES SHALL NOT EXCEED 2". GRADE DIFFERENTIALS BETWEEN TRAVEL LANES UP TO A MAXIMUM OF 4" ARE ALLOWED WITH INSTALLATION OF A TEMPORARY WEDGE OR MILLED SLOPED EDGE AT A MINIMUM GRADE OF 1:3 (V:H). INSTALLATION AND REMOVAL OF THE TEMPORARY WEDGES AND/OR TAPERED MILLED EDGES SHALL NOT BE PAID FOR SEPARATELY, BUT SHALL BE INCLUDED IN THE COST OF THE CONTRACT.
18. * WHERE ARTIFICIAL LIGHTING IS USED IN NIGHT OPERATIONS, THE CONTRACTOR SHALL EXERCISE THE UTMOST PRECAUTIONS IN PREVENTING ADVERSE VISIBILITY TO THE MOTORING PUBLIC AND ADJOINING RESIDENTIAL AREAS.
19. EXISTING PAVEMENT MARKINGS THAT CONFLICT WITH REVISED TRAFFIC PATTERNS SHALL BE REMOVED AS DIRECTED BY THE ENGINEER. THIS WORK WILL BE PAID FOR A THE CONTRACT UNIT PRICE PER SQUARE FOOT FOR PAVEMENT MARKING REMOVAL.
20. TEMPORARY EDGE LINES IN THE SUGGESTED MAINTENANCE OF TRAFFIC SHALL BE INSTALLED BEFORE LANES REOPEN TO TRAFFIC.
21. VERTICAL PANELS OR BARRELS WILL REMAIN IN PLACE ALONG THE EDGES OF PAVEMENT AS SHOWN IN THE SUGGESTED MAINTENANCE OF TRAFFIC PLANS UNTIL THE SURFACE COURSE AND PROPOSED PAVEMENT MARKING EDGE LINES HAVE BEEN COMPLETED.
22. SURFACE TESTING OF ASPHALT PAVEMENTS WILL BE PERFORMED BY THE CONTRACTOR AS DESCRIBED IN THE SPECIAL PROVISIONS AND THE COST SHALL BE INCLUDED IN THE COST OF THE HMA ITEMS BEING TESTED.
23. ALL TRAFFIC CONTROL, DEVICES, BARRICADES, DRUMS, LANE CLOSURES, TEMPORARY PAVEMENT MARKINGS, ETC. ALONG THE CROSS ROADS WITHIN THE CONTRACT LIMITS, UNLESS OTHERWISE SPECIFIED IN THE TRAFFIC CONTROL PLANS, SHALL NOT BE PAID FOR SEPARATELY, BUT SHALL BE INCLUDED IN THE LUMP SUM PRICE FOR "TRAFFIC CONTROL AND PROTECTION (EXPRESSWAYS)". THE CONTRACTOR SHALL USE THE APPROPRIATE IDOT OR DISTRICT ONE STANDARD AND OBTAIN APPROVAL FROM THE ENGINEER.
24. THE CONTRACTOR TO PATCH BEFORE MILLING. CLASS D PATCHES SHALL BE PLACED ON THE MAINLINE AND CLASS C PATCHES SHALL BE PLACED ON THE RAMPS AS DIRECTED BY THE ENGINEER.
25. THE CONTRACTOR SHALL MODIFY, OR SUPPLEMENT, EXISTING SIGN PANEL MOUNTING BRACKETS AS REQUIRED FOR PROPER INSTALLATION OF THE PROPOSED SIGN PANELS, INCLUDING ALL LABOR, EQUIPMENT, MATERIALS, AND HARDWARE AS DIRECTED BY THE ENGINEER. THIS WORK SHALL BE INCLUDED IN THE COST OF SIGN PANEL-TYPE 3.

*** 17A IF WEDGE IS INSTALLED FOLLOWING BINDER REMOVAL, PROPOSED BINDER MUST BE PLACED WITHIN 72 HOURS.**

HOT-MIX ASPHALT REQUIREMENTS

MIXTURE TYPE	AIR VOIDS	THICKNESS
MAINLINE, INSIDE SHOULDERS AND RAMP RESURFACING		
POLYMERIZED HOT-MIX ASPHALT SURFACE COURSE, STONE MATRIX ASPHALT, N80	3.5% @ 80 GYR	2"
POLYMERIZED HOT-MIX ASPHALT BINDER COURSE, STONE MATRIX ASPHALT, N80	3.5% @ 80 GYR	2"
OUTSIDE SHOULDER RESURFACING		
HOT-MIX ASPHALT BINDER COURSE, IL-19.0,N70	4% @ 70 GYR	2-1/2"
HOT-MIX ASPHALT SURFACE COURSE, MIX "D", N70 (IL 9.5mm)	4% @ 70 GYR	1-1/2"
PATCHING		
CLASS D PATCHES (HMA BINDER IL-25 mm)	4% @ 105 GYR	10"
HMA REPLACEMENT OVER PATCHES (HMA BINDER IL-19MM)	4% @ 70 GYR	4"

1. THE UNIT WEIGHT USED TO CALCULATE ALL HOT-MIX SURFACE MIXTURES IS 112 LBS/SQ YD/INCH THICKNESS.
2. THE "AC TYPE" FOR POLYMERIZED HMA MIXES SHALL BE "SBS/SBR PG 70-22" AND FOR NON-POLYMERIZED HMA THE "AC TYPE" SHALL BE "PG 64-22" UNLESS MODIFIED BY DISTRICT ONE SPECIAL PROVISIONS. FOR "PERCENT OF RAP" SEE DISTRICT ONE SPECIAL PROVISIONS.
3. PAY FOR PERFORMANCE PERTAINS TO THE MAINLINE SMA SURFACE AND SMA BINDER ONLY.

USER NAME = skoeppen\rdwy.Lisa	DESIGNED - EJB	REVISED 03/04/11 ADDENDUM B
FILE NAME = PDF11-80_Topo\Grey_Large.plt	DRAWN - EJB	REVISED -
PLOT SCALE = 1:50	CHECKED - DTH	REVISED -
PLOT DATE = 2/15/2011	DATE - 1/21/2011	REVISED -



**STATE OF ILLINOIS
DEPARTMENT OF TRANSPORTATION**

**INDEX OF SHEETS, GENERAL NOTES, STANDARD DRAWINGS
AND MIXTURE REQUIREMENTS**

SCALE: N/A SHEET NO. OF SHEETS STA. TO STA.

F.A.I. RTE.	SECTION	COUNTY	TOTAL SHEETS	SHEET NO.
80	99 (2 & 3) RS-3	WILL	200	2
FED. ROAD DIST. NO. 1 ILLINOIS FED. AID PROJECT			CONTRACT NO. 60M64	

URBAN

SUMMARY OF QUANTITIES		UNIT	100% STATE TOTAL	CONSTRUCTION TYPE CODE		
CODE NO.	ITEM DESCRIPTION			0005	0014	0005
				1	2	3
20100110	TREE REMOVAL (6 TO 15 UNITS DIAMETER)	UNIT	545		545	
20100210	TREE REMOVAL (OVER 15 UNITS DIAMETER)	UNIT	610		610	
20101300	TREE PRUNING (1 TO 10 INCH DIAMETER)	EACH	58		58	
20101350	TREE PRUNING (OVER 10 INCH DIAMETER)	EACH	73		73	
20700220	POROUS GRANULAR EMBANKMENT	CU YD	261	261		
21101605	TOPSOIL FURNISH AND PLACE, 2"	SQ YD	4,748		4,748	
25000210	SEEDING, CLASS 2A	ACRE	4.5		4.5	
X2501800	SEEDING, CLASS 4 (MODIFIED)	ACRE	34		34	
25000400	NITROGEN FERTILIZER NUTRIENT	POUND	1,125		1,125	
25000500	PHOSPHORUS FERTILIZER NUTRIENT	POUND	1,125		1,125	
25000600	POTASSIUM FERTILIZER NUTRIENT	POUND	1,125		1,125	
25000750	MOWING	ACRE	36		36	
25003210	INTERSEEDING, CLASS 2A	ACRE	8		8	
25100115	MULCH, METHOD 2	ACRE	3		3	
25100630	EROSION CONTROL BLANKET	SQ YD	922		922	
28000250	TEMPORARY EROSION CONTROL SEEDING	POUND	300		300	
40600100	BITUMINOUS MATERIALS (PRIME COAT)	GALLON	30,318	30,318		
40600300	AGGREGATE (PRIME COAT)	TON	539	539		
40600400	MIXTURE FOR CRACKS, JOINTS, AND FLANGWAYS	TON	39	39		
40600895	CONSTRUCT ^{ING} TEST STRIP	EACH	2	2		
40600982	HOT-MIX ASPHALT SURFACE REMOVAL - BUTT JOINT	SQ YD	276	276		
40601005	HOT-MIX ASPHALT REPLACEMENT OVER PATCHES	TON	357	357		
40603085	HOT-MIX ASPHALT BINDER COURSE, IL-19.0, N70	TON	5,388	5,388		
40603148	POLYMERIZED HOT-MIX ASPHALT BINDER COURSE, STONE MATRIX ASPHALT, N80	TON	12,532	12,532		
40603153	POLYMERIZED HOT-MIX ASPHALT SURFACE COURSE, STONE MATRIX ASPHALT, N80	TON	13,407	12,696	711	
40603340	HOT-MIX ASPHALT SURFACE COURSE, MIX "D", N70	TON	4,013	4,013		
44000157	HOT-MIX ASPHALT SURFACE REMOVAL, 2"	SQ YD	8,439	8,439		
44000165	HOT-MIX ASPHALT SURFACE REMOVAL, 4"	SQ YD	150,359	150,359		
44002216	HOT-MIX ASPHALT REMOVAL OVER PATCHES, 4"	SQ YD	1,381	1,381		
44201349	CLASS C PATCHES, TYPE I, 10 INCH	SQ YD	20	20		
44201353	CLASS C PATCHES, TYPE II, 10 INCH	SQ YD	25	25		
44201357	CLASS C PATCHES, TYPE III, 10 INCH	SQ YD	20	20		
44201359	CLASS C PATCHES, TYPE IV, 10 INCH	SQ YD	25	25		
44201761	CLASS D PATCHES, TYPE I, 10 INCH	SQ YD	25	25		
44201765	CLASS D PATCHES, TYPE II, 10 INCH	SQ YD	27	27		
44201769	CLASS D PATCHES, TYPE III, 10 INCH	SQ YD	250	250		
44201771	CLASS D PATCHES, TYPE IV, 10 INCH	SQ YD	1,106	1,106		
48102100	AGGREGATE WEDGE SHOULDER, TYPE B	TON	1600	1600		
50102400	CONCRETE REMOVAL	CU YD	7.1	7.1		
50104650	SLOPEWALL REMOVAL	SQ YD	212	212		

URBAN

SUMMARY OF QUANTITIES		UNIT	100% STATE TOTAL	CONSTRUCTION TYPE CODE		
CODE NO.	ITEM DESCRIPTION			0005	0014	0005
				1	2	3
50157300	PROTECTIVE SHIELD	SQ YD	1,581		1,581	
50300225	CONCRETE STRUCTURES	CU YD	1		1	
50300255	CONCRETE SUPERSTRUCTURES	CU YD	5.7		5.7	
50500405	FURNISHING AND ERECTING STRUCTURAL STEEL	POUND	737		737	
50800205	REINFORCEMENT BARS, EPOXY COATED	POUND	1,422		1,422	
50800515	BAR SPLICERS	EACH	14		14	
59000200	EPOXY CRACK INJECTION	FOOT	17		17	
51100100	SLOPEWALL 4 INCH	SQ YD	212		212	
52100520	ANCHOR BOLTS, 1"	EACH	4		4	
58700300	CONCRETE SEALER	SQ FT	23,346		23,346	
64200105	SHOULDER RUMBLE STRIPS	FOOT	54,104	54,104		
67100100	MOBILIZATION	L SUM	1	1		
70106800	CHANGEABLE MESSAGE SIGN	CAL MO	15	15		
70300240	TEMPORARY PAVEMENT MARKING- LINE 6"	FOOT	9,613	9,613		
70301000	WORK ZONE PAVEMENT MARKING REMOVAL	SQ FT	350	350		
70400100	TEMPORARY CONCRETE BARRIER	FOOT	7,750	7,750		
70400200	RELOCATE TEMPORARY CONCRETE BARRIER	FOOT	10,175	10,175		
* 72000100	SIGN PANEL - TYPE 1	SQ FT	104	104		
* 72000200	SIGN PANEL - TYPE 2	SQ FT	792	792		
* 72000300	SIGN PANEL - TYPE 3	SQ FT	3,631	3,631		
* 72400100	REMOVE SIGN PANEL ASSEMBLY- TYPE A	EACH	6	6		
* 72400200	REMOVE SIGN PANEL ASSEMBLY- TYPE B	EACH	23	23		
* 72400310	REMOVE SIGN PANEL- TYPE 1	SQ FT	73	73		
* 72400320	REMOVE SIGN PANEL- TYPE 2	SQ FT	356	356		
* 72400330	REMOVE SIGN PANEL- TYPE 3	SQ FT	3,655	3,655		
* 72600100	MILE POST MARKER ASSEMBLY	EACH	11	11		
* 72900200	METAL POST- TYPE B	FOOT	603	603		
* 73000100	WOOD SIGN SUPPORT	FOOT	746	746		
* 73700100	REMOVE GROUND MOUNTED SIGN SUPPORT	EACH	31	31		
* 78000100	THERMOPLASTIC PAVEMENT MARKING - LETTERS AND SYMBOLS	SQ FT	182	182		
* 78000200	THERMOPLASTIC PAVEMENT MARKING - LINE 4"	FOOT	64,777	64,777		
* 78000500	THERMOPLASTIC PAVEMENT MARKING - LINE 8"	FOOT	8,872	8,872		
* 78000600	THERMOPLASTIC PAVEMENT MARKING - LINE 12"	FOOT	1,607	1,607		
* 78000650	THERMOPLASTIC PAVEMENT MARKING - LINE 24"	FOOT	35	35		
* 78004220	PREFORMED PLASTIC PAVEMENT MARKING, TYPE B-INLAID- LINE 5"	FOOT	7,544	7,544		
* 78004240	PREFORMED PLASTIC PAVEMENT MARKING, TYPE B-INLAID- LINE 8"	FOOT	997	997		
* 78005110	EPOXY PAVEMENT MARKING - LINE 4"	FOOT	1000	1000		
* 78008210	POLYUREA PAVEMENT MARKING TYPE I- LINE 4"	FOOT	8,634	8,634		
* 78008220	POLYUREA PAVEMENT MARKING TYPE I- LINE 5"	FOOT	1,060	1,060		
* 78008240	POLYUREA PAVEMENT MARKING TYPE I- LINE 8"	FOOT	1,563	1,563		

Rev. 3-1-11 Rev. 3-4-11

USER NAME = tkoppen@rdg.lisle
 PLOT CONFIG = PDF(Large).plt
 PLOT SCALE = 1:50
 PLOT DATE = 1/20/2011
 FILE NAME = ...dms34575\016064-shr-SQG.dgn

DESIGNED -
 DRAWN -
 CHECKED -
 DATE -

REVISED - TCK
 REVISED - CPK
 REVISED - DTH
 REVISED - 1/21/2011

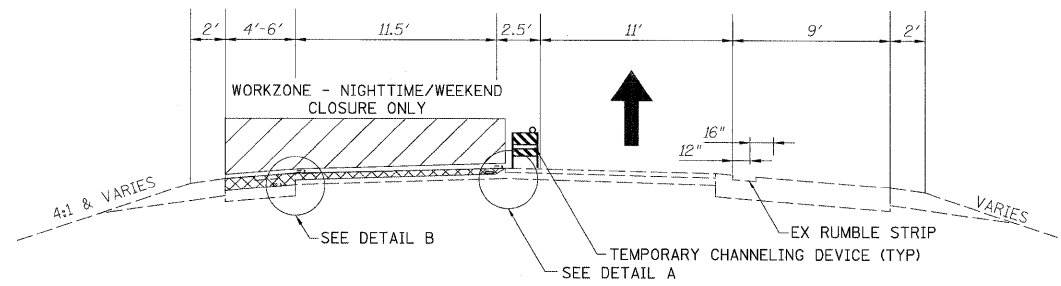


STATE OF ILLINOIS
 DEPARTMENT OF TRANSPORTATION

SUMMARY OF QUANTITIES

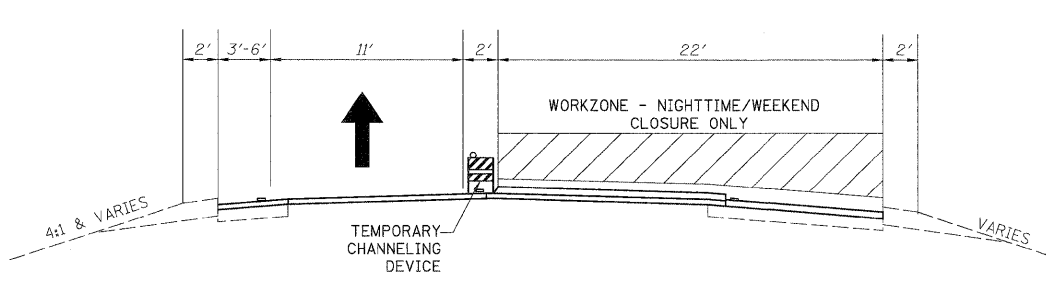
SCALE: N/A SHEET NO. 1 OF 2 SHEETS STA. TO STA.

F.A.I. SECTION COUNTY TOTAL SHEETS SHEET NO.
 80 99 (2 & 3) RS-3 WILL 200 3
 CONTRACT NO. 60M64
 FED. ROAD DIST. NO. 1 ILLINOIS FED. AID PROJECT



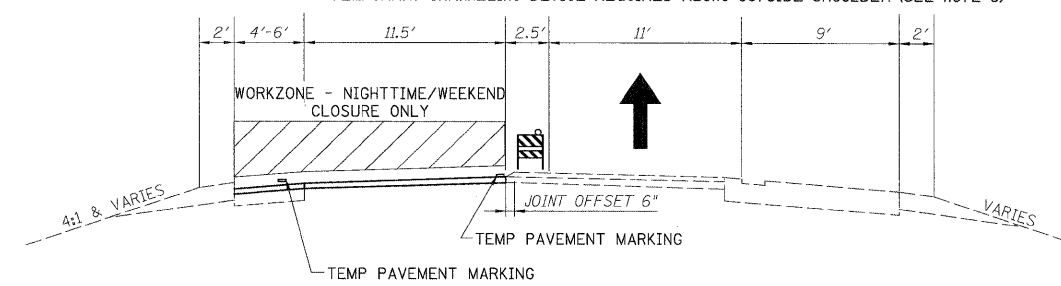
OPERATION 1

- GRIND 4" INSIDE SHOULDER
- GRIND 2" SMA SURFACE LANE 1
- TEMPORARY CHANNELING DEVICE REQUIRED ALONG OUTSIDE SHOULDER (SEE NOTE 6)



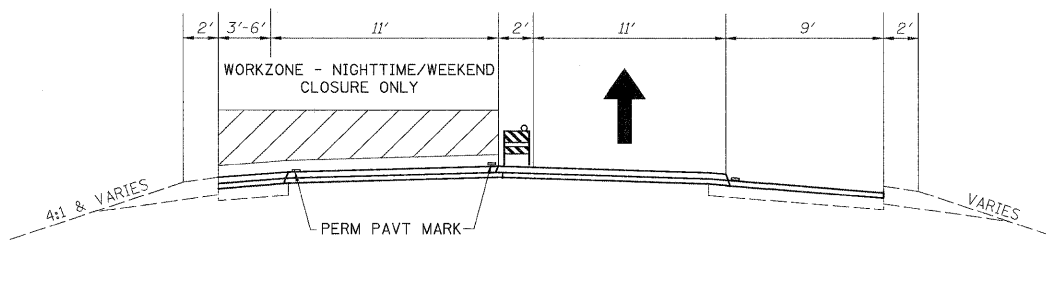
OPERATION 5

- PLACE 2" SMA SURFACE LANE 2



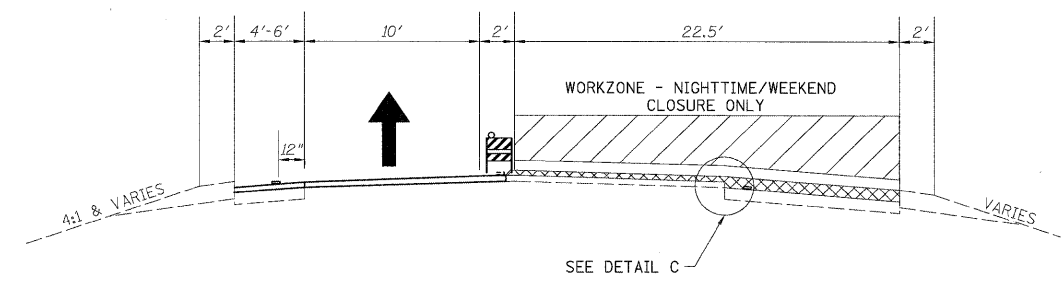
OPERATION 2

- GRIND 2" BINDER ASPHALT AND PLACE 2" SMA BINDER LANE 1 (SAME CLOSURE)
- PLACE INSIDE SHOULDER BINDER



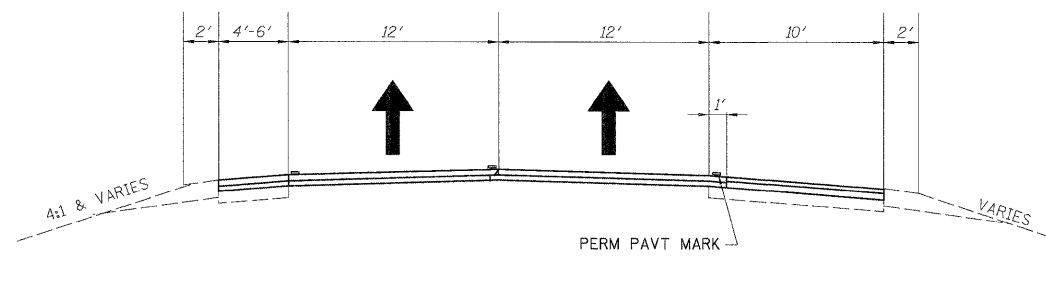
OPERATION 6

- PLACE 2" SMA SURFACE LANE 2



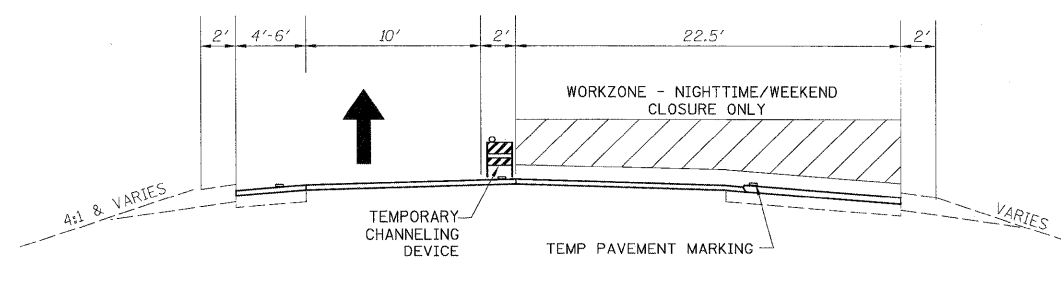
OPERATION 3

- GRIND 4" OUTSIDE SHOULDER
- GRIND 2" SURFACE ASPHALT LANE 2



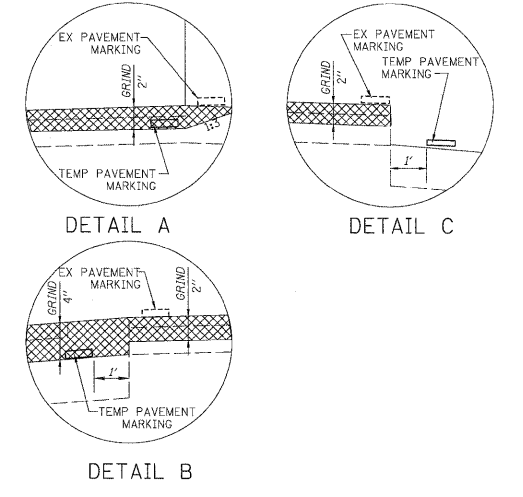
OPERATION 7

- PLACE OUTSIDE SHOULDER SURFACE
- INSTALL RUMBLE STRIP



OPERATION 4

- GRIND 2" BINDER ASPHALT AND PLACE 2" SMA BINDER LANE 2 (SAME CLOSURE)
- PLACE OUTSIDE SHOULDER BINDER



NOTES:

1. ALL OPERATIONS TO BE PERFORMED UNDER TEMPORARY NIGHTTIME/WEEKEND CLOSURES. DAYTIME TRAFFIC WILL UTILIZE EXISTING TRAFFIC CONFIGURATION.
2. IDOT STANDARD T01401-06 SHALL BE FOLLOWED FOR ALL TEMPORARY LANE CLOSURE
3. SURFACE REMOVAL WILL BE PAID AS HOT-MIX ASPHALT SURFACE REMOVAL, 4" (44000165) REGARDLESS OF THE NUMBER OF PASSES.
4. FOR HMA MIX TABLE, SEE GENERAL NOTES.
5. MOT TYPICAL SECTIONS HAVE WESTBOUND SHOWN. EASTBOUND IS SIMILAR.
6. BARRICADES ARE REQUIRED ALONG ALL SHOULDERS FOR DROPOFFS GREATER THAN 3", AND LOW SHOULDER SIGNS (2 MILE SPACING) ARE REQUIRED FOR ALL SHOULDER DROPOFFS GREATER THAN 1 INCH.
7. PAVEMENT PATCHING TO BE DONE PRIOR TO THE TRAFFIC OPERATIONS SHOWN.
8. THE CONTRACTOR IS ADVISED THAT THE EXISTING MAINLINE SURFACE ASPHALT CONTAINS SLAG AND ALL LIMITS AND RESTRICTIONS FOR USE OF THIS MATERIAL AS RAP SHALL APPLY.
9. EPOXY PAVEMENT MARKINGS WILL BE USED ON ALL MILLED SURFACES AS TEMPORARY PAVEMENT MARKINGS. THIS WORK WILL BE PAID AS WET REFLECTIVE TEMPORARY TAPE. SEE CONTRACT SPECIAL PROVISIONS.
10. ANY MAINLINE BINDER REMOVED WILL BE REPLACED BEFORE RE-OPENING THE ROAD TO TRAFFIC.
11. ANY PAVEMENT MARKING (TEMPORARY OR PERMANENT) REMOVED UNDER THIS CONTRACT SHALL BE REPLACED BY THIS CONTRACT PRIOR TO RE-OPENING THE LANES TO TRAFFIC.

12 ALL MAINTENANCE OF TRAFFIC - TYPICAL SECTIONS FOR TEMPORARY LANE CLOSURES ARE SUGGESTED SEQUENCES OF OPERATIONS.

USER NAME = tkoeppen(Rdwy.L1s1e)	DESIGNED - MJV	REVISED 03/04/11 ADDENDUM B		STATE OF ILLINOIS DEPARTMENT OF TRANSPORTATION			MOT TYPICAL SECTIONS I-80 MAINLINE			F.A.I. RTE.	SECTION	COUNTY	TOTAL SHEETS	SHEET NO.
PLOT CONFIG = PDF(1-80_TopoGray_Large).pl	DRAWN - MJV	REVISED -								80	99 (2 & 3) RS-3	WILL	200	34
PLOT SCALE = 1:10,000	CHECKED - DTH	REVISED -								CONTRACT NO. 60M64				
PLOT DATE = 1/20/2011	DATE - 1/21/2011	REVISED -								FED. ROAD DIST. NO. 1 [ILLINOIS] FED. AID PROJECT				
SCALE: N/A			SHEET NO. 1 OF 1 SHEETS			STA. TO STA.								