

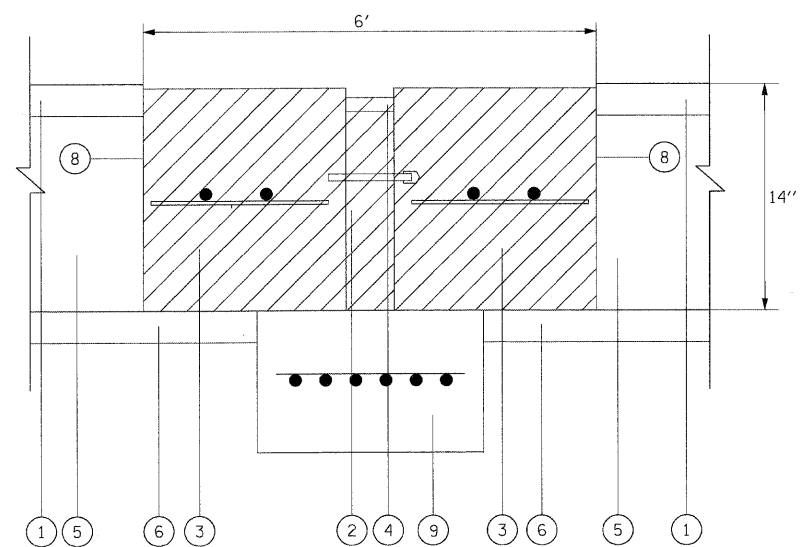
PLAN VIEW OF EXISTING PAVEMENT RELIEF JOINT

LEGEND

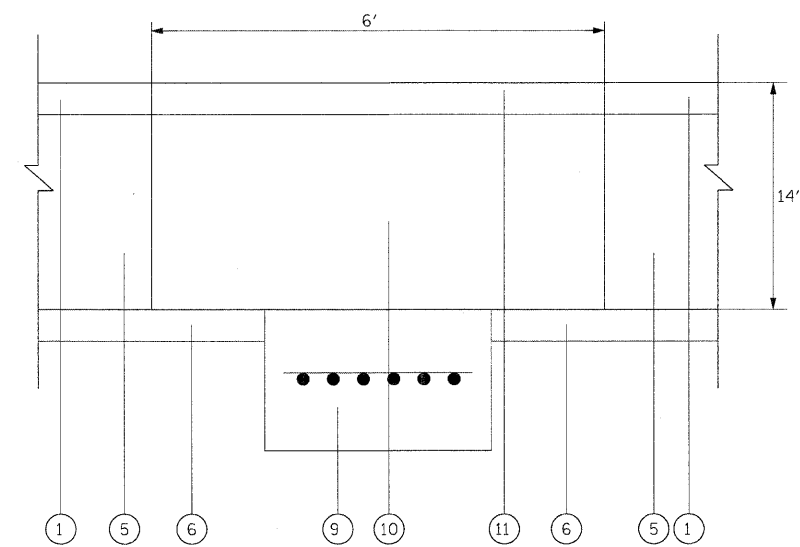
- ① EXISTING SMA OVERLAY, 4"
- ② EXISTING PREFORMED JOINT FILLER REMOVAL
- ③ EXISTING PORTLAND CEMENT CONCRETE REMOVAL
- ④ EXISTING HOT POURED JOINT SEALER REMOVAL
- ⑤ EXISTING P.C.C. PAVEMENT, 10"
- ⑥ EXISTING SUB-BASE
- ⑦ WHEEL SAW CUT (INCLUDED IN THE COST OF PAVEMENT PATCHING)
- ⑧ SAW CUT, FULL DEPTH (INCLUDED IN THE COST OF PAVEMENT PATCHING)
- ⑨ SLEEPER SLAB (NOT TO BE REMOVED OR DAMAGED)
- ⑩ PROPOSED CLASS D PATCHES, 10 INCH
- ⑪ HOT-MIX ASPHALT REPLACEMENT OVER PATCHES, 4"

NOTE:

REMOVAL AND DISPOSAL OF EXISTING PAVEMENT RELIEF JOINTS, AS SHOWN ON THE PLANS, WILL NOT BE PAID FOR SEPARATELY, BUT WILL BE CONSIDERED INCIDENTAL TO THE CLASS D PATCH REPLACEMENT AT THE SAME LOCATION.



SECTION A-A
EXISTING PAVEMENT RELIEF JOINT TO BE REMOVED (TYPICAL)



SECTION A-A
PROPOSED PAVEMENT RELIEF JOINT TO BE REPLACED BY CLASS D PATCH (TYPICAL)

ENTIRE SHEET

USER NAME = lsupancheck	DESIGNED - LLS/JG	REVISED - 02/15/11		STATE OF ILLINOIS DEPARTMENT OF TRANSPORTATION	PAVEMENT RELIEF JOINT REMOVAL AND REPLACEMENT DETAIL	F.A.I. RTE.	SECTION	COUNTY	TOTAL SHEETS	SHEET NO.
PLOT SCALE = 12.5:1	DRAWN -	REVISED -				80	99 (3&4) RS-4	WILL	117	30
PLOT DATE = 15-FEB-2011	CHECKED - JAL	REVISED -				CONTRACT NO. 60M65				
FILE NAME = TP_PWP\dms34560\160M63-ehd-details.dgn	DATE - 01/19/2011	REVISED -	SCALE: N.T.S. SHEET NO. 1 OF 1 SHEETS STA. N/A TO STA. N/A			FED. ROAD DIST. NO. 1 ILLINOIS FED. AID PROJECT				