

Existing Structure: SN 099-0047 carrying I-80 Westbound over Rock Run Creek was originally constructed in 1962 as F.A.I. Route 80, Section 99-2B. The structure consists of a three-span continuous cast in place reinforced concrete slab supported by pile supported concrete stub abutments and solid wall concrete piers. The existing handrail was removed and a new steel guard rail was installed in 1992. New deck drains, expansion joints and elastomeric expansion bearings at the abutments were also installed in 1992.

Staging: Traffic shall be maintained using staged construction.

### INDEX OF SHEETS

1. General Plan, Notes & Total Bill of Material
2. Deck Repair Plan
3. UnderDeck Repair Plan
4. Abutment and Pier Repair Details
5. Construction Staging
6. Temporary Concrete Barrier for Stage Construction

### TOTAL BILL OF MATERIAL

ITEM	UNIT	SUPER	SUB	TOTAL
** Deck Slab Repair (Partial)	Sq.Yd.	128	0	128
Silicone Joint Sealer, 1.75"	Foot	88	0	88
Structural Repair Of Concrete (Depth Equal To Or Less Than 5 inches)	Sq.Ft.	91	115	206
Structural Repair Of Concrete (Depth Greater Than 5 inches)	Sq.Ft.	42	0	42
Approach Slab Repair (Partial Depth)	Sq.Yd.	2.7	0	2.7
Plug Existing Deck Drains	Each	12	0	12
Cleaning and Painting Exposed Rebar	Sq.Ft.	1044	0	1044
Concrete Sealer	Sq.Ft.	4100	0	4100

\*\* Work shall be performed in accordance with Special Provision Deck Slab Repair (Special)

### SCOPE OF WORK

1. Deck slab repair (partial depth).
2. Remove preformed joint seals and replace with silicone joint sealer.
3. Structural repair of concrete substructure elements.
4. Plug existing 6" dia. deck drains.
5. Apply concrete sealer to bridge deck and face of curbs.
6. Cleaning and painting exposed rebar.

### DESIGN SPECIFICATIONS

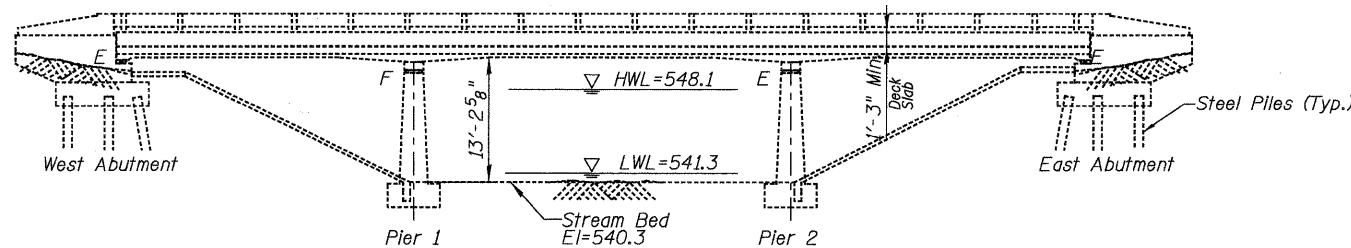
2002 AASHTO Standard Specifications for Highway Bridges, 17th Edition

### DESIGN STRESSES

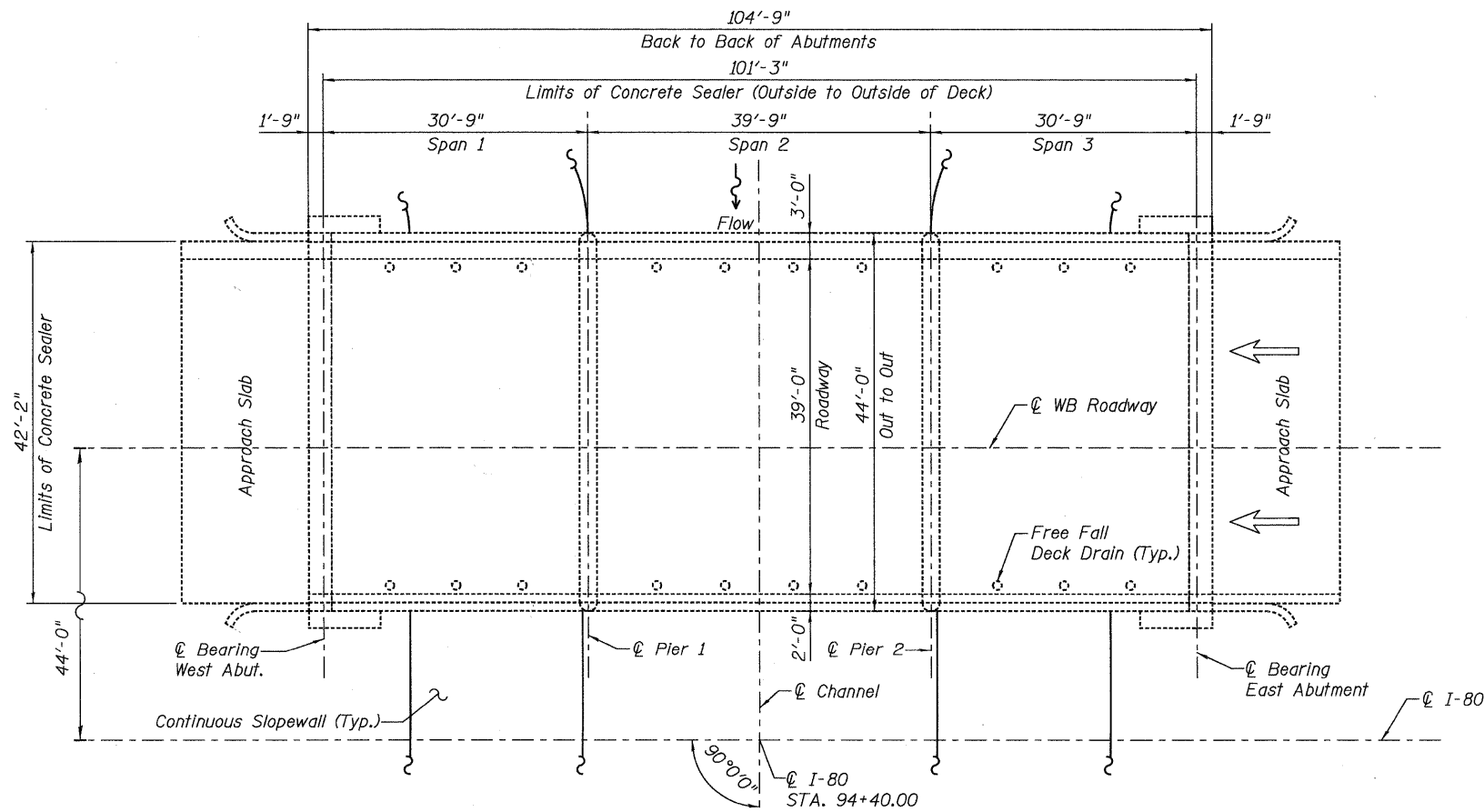
$f'c = 3,500$  psi

### GENERAL NOTES

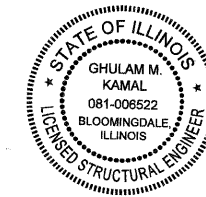
1. Reinforcement bars shall conform to the requirements of ASTM A 706 Grade 60. See Special Provisions.
2. Concrete Sealer shall be applied to the bridge deck and face of curbs. All surfaces to be sealed should be thoroughly cleaned prior to sealer application. Cost of cleaning is included with Concrete Sealer, see Special Provisions. Limits of Concrete Sealer extend from abutment to abutment and from top of face to top of face of curbs.
3. Plan dimensions and details relative to existing plans are subject to nominal construction variations. The Contractor shall field verify existing dimensions and details affecting new construction and make necessary approved adjustments prior to construction or ordering of materials. Such variations shall not be cause for additional compensation for a change in scope of the work, however, the Contractor will be paid for the quantity actually furnished at the unit price bid for the work.
4. Areas of proposed repairs are estimated. Actual type, location and dimension of deck repairs are to be determined by the Engineer during construction.
5. Existing pavement markings shall be temporarily covered prior to application of the deck surface treatment, to prevent the material from being applied to the markings. The temporary covering shall be removed after application of the deck treatment and prior to opening to traffic. Cost included with Concrete Sealer.
6. Dimensions and data are taken from original contract plans, dated March 1960.



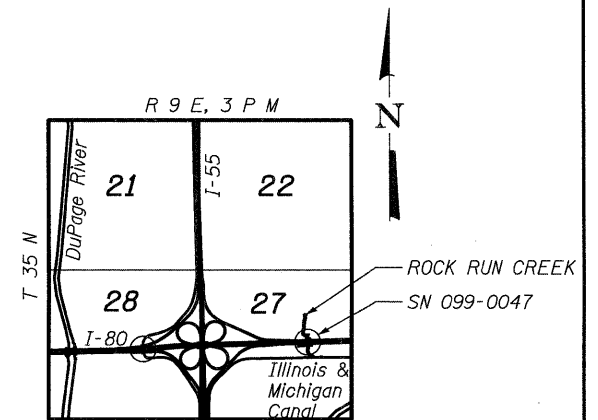
**ELEVATION**  
Looking North



**PLAN**



Signed: *G. Kamal*  
Date: 01/18/2011  
Exp: 11/30/2012  
Sheets: 89-94



**LOCATION SKETCH**

USER NAME =	DESIGNED - GMK	REVISED -	DBS STERLIN CONSULTANTS, INC. 123 N. WACKER DRIVE SUITE 2000 CHICAGO, ILLINOIS 60608 TEL: (312) 857-1000 FAX: (312) 857-1008	<b>STATE OF ILLINOIS</b> <b>DEPARTMENT OF TRANSPORTATION</b>	<b>GENERAL PLAN, NOTES &amp; TOTAL BILL OF MATERIAL</b> <b>WESTBOUND I-80 OVER ROCK RUN CREEK</b> <b>SN-099-0047</b>	F.A.I. RTE.	SECTION	COUNTY	TOTAL SHEETS	SHEET NO.
PLLOT SCALE =	DRAWN - GFP	REVISED -				80	99 (3&4) RS-4	WILL	117	89
PLLOT DATE =	CHECKED - WPK/GMK	REVISED -				CONTRACT NO. 60M65				
FILE NAME =	DATE - 01/18/2011	REVISED -				FED. ROAD DIST. NO. 1 [ILLINOIS] FED. AID PROJECT				