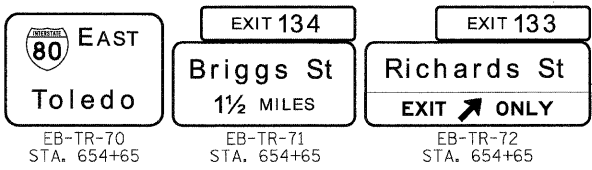
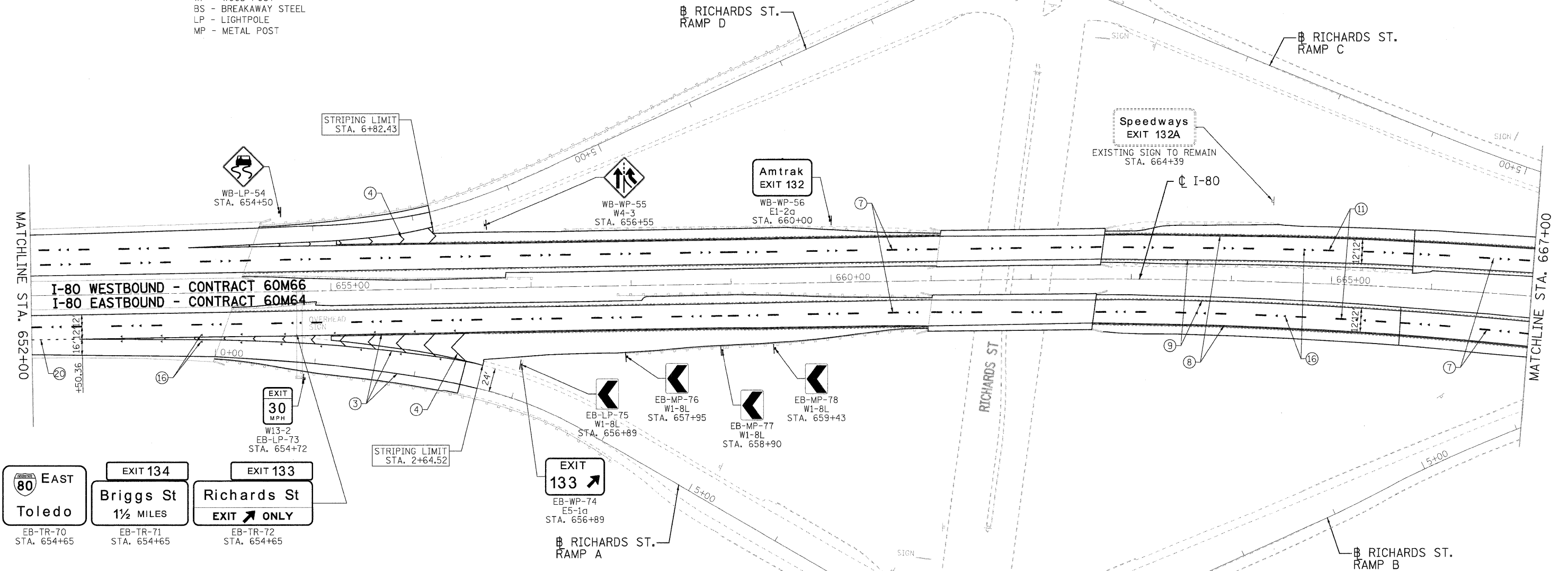


**GUIDE SIGN SEQUENCE  
NUMBERING CODE**

DIRECTION OF TRAFFIC	EB - TR - 03	SIGN PANEL NUMBER
EB - EASTBOUND FAI 80		
WB - WESTBOUND FAI 80		
	MOUNTING TYPE	
	TR - TRUSS	
	CL - CANTILEVER	
	BM - BRIDGE MOUNTED	
	WP - WOOD POST	
	BS - BREAKAWAY STEEL	
	LP - LIGHTPOLE	
	MP - METAL POST	

**NOTES**

- SEE IDOT DISTRICT 1 DETAILS FOR TC-12 'MULTI-LANE FREEWAY PAVEMENT MARKING DETAILS' FOR PLACEMENT AND TYPE OF RAISED REFLECTIVE PAVEMENT MARKERS.
- FOR PROPOSED PAVEMENT MARKINGS IN THE PCC SECTIONS, USE POLYUREA PAVEMENT MARKINGS ACCORDING TO DISTRICT 1 DETAIL TC-12.
- REFER TO ROADWAY PLANS FOR LIMITS OF RESURFACING.
- ALL EASTBOUND WORK IS IN CONTRACT 60M64 AND ALL WESTBOUND WORK IS IN CONTRACT 60M66.



- LEGEND:**
- |  |   |  |
|--|---|--|
| ① THERMOPLASTIC PAVEMENT MARKING - LINE 4" (WHITE EDGE LINE)                                 | ⑪ POLYUREA PAVEMENT MARKING TYPE I - LINE 5" (WHITE 10' DASH , 30' SKIP - P.C.C. PVT. ONLY)                     | ⑳ PREFORMED PLASTIC PAVEMENT MARKING, TYPE B - INLAID - LINE 8" (WHITE 3' DASH, 9" SKIP) |
| ② THERMOPLASTIC PAVEMENT MARKING - LINE 4" (YELLOW EDGE LINE)                                | ⑫ POLYUREA PAVEMENT MARKING TYPE I - LINE 8" (WHITE EDGE LINE - P.C.C. PVT. ONLY)                               |  |
| ③ THERMOPLASTIC PAVEMENT MARKING - LINE 8" (WHITE EDGE LINE)                                 | ⑬ POLYUREA PAVEMENT MARKING TYPE I - LINE 12" (WHITE GORE CHEVRONS SPACED @ 30' CENTERS - P.C.C. PVT. ONLY)     |  |
| ④ THERMOPLASTIC PAVEMENT MARKING - LINE 12" (WHITE GORE CHEVRONS SPACED @ 30' CENTERS)       | ⑭ POLYUREA PAVEMENT MARKING TYPE I - LINE 12" (WHITE SHOULDER DIAGONALS SPACED @ 500' CENTERS (40' AT BRIDGES)) |  |
| ⑤ THERMOPLASTIC PAVEMENT MARKING - LINE 12" (WHITE SHOULDER DIAGONALS SPACED @ 500' CENTERS) | ⑮ RAISED REFLECTIVE PAVEMENT MARKER (1-WAY YELLOW / OPAQUE)   |  |
| ⑥ THERMOPLASTIC PAVEMENT MARKING - LINE 4" (WHITE 2' DASH , 6' SKIP)                         | ⑯ RAISED REFLECTIVE PAVEMENT MARKER (1-WAY CRYSTAL / OPAQUE)  |  |
| ⑦ PREFORMED PLASTIC PAVEMENT MARKING , TYPE B - INLAID - LINE 5" (WHITE 10' DASH , 30' SKIP) | ⑰ RAISED REFLECTIVE PAVEMENT MARKER (BRIDGE)  |  |
| ⑧ POLYUREA PAVEMENT MARKING TYPE I - LINE 4" (WHITE EDGE LINE - P.C.C. PVT. ONLY)            | ⑱ THERMOPLASTIC PAVEMENT MARKING - LETTERS AND SYMBOLS  |  |
| ⑨ POLYUREA PAVEMENT MARKING TYPE I - LINE 4" (YELLOW EDGE LINE - P.C.C. PVT. ONLY)           | ⑲ POLYUREA PAVEMENT MARKING TYPE I - LETTERS AND SYMBOLS  |  |
| ⑩ POLYUREA PAVEMENT MARKING TYPE I - LINE 4" (WHITE 2' DASH , 6' SKIP - P.C.C. PVT. ONLY)    |   |  |

USER NAME = tkoepfer(Rday.Lis)le	DESIGNED - EJB	REVISED -	<b>HBP</b> Illinois Partners	<b>STATE OF ILLINOIS DEPARTMENT OF TRANSPORTATION</b>	<b>PAVEMENT MARKING &amp; SIGNING PLAN I-80 MAINLINE</b>	F.A.I. RTE.	SECTION	COUNTY	TOTAL SHEETS	SHEET NO.
PLOT CONFIG = PDF(Large).plt	DRAWN - EJB	REVISED -				80	99 (4 & 4-1) RS-3	WILL	203	69
PLOT SCALE = 1:500	CHECKED - DTH	REVISED -				CONTRACT NO. 60M66				
PLOT DATE = 1/18/2011	DATE - 1/20/2011	REVISED -				FED. ROAD DIST. NO. 1 ILLINOIS FED. AID PROJECT				
SCALE: 1"=50'						SHEET NO. 8 OF 18 SHEETS		STA. 652+00.00 TO STA. 667+00.00		