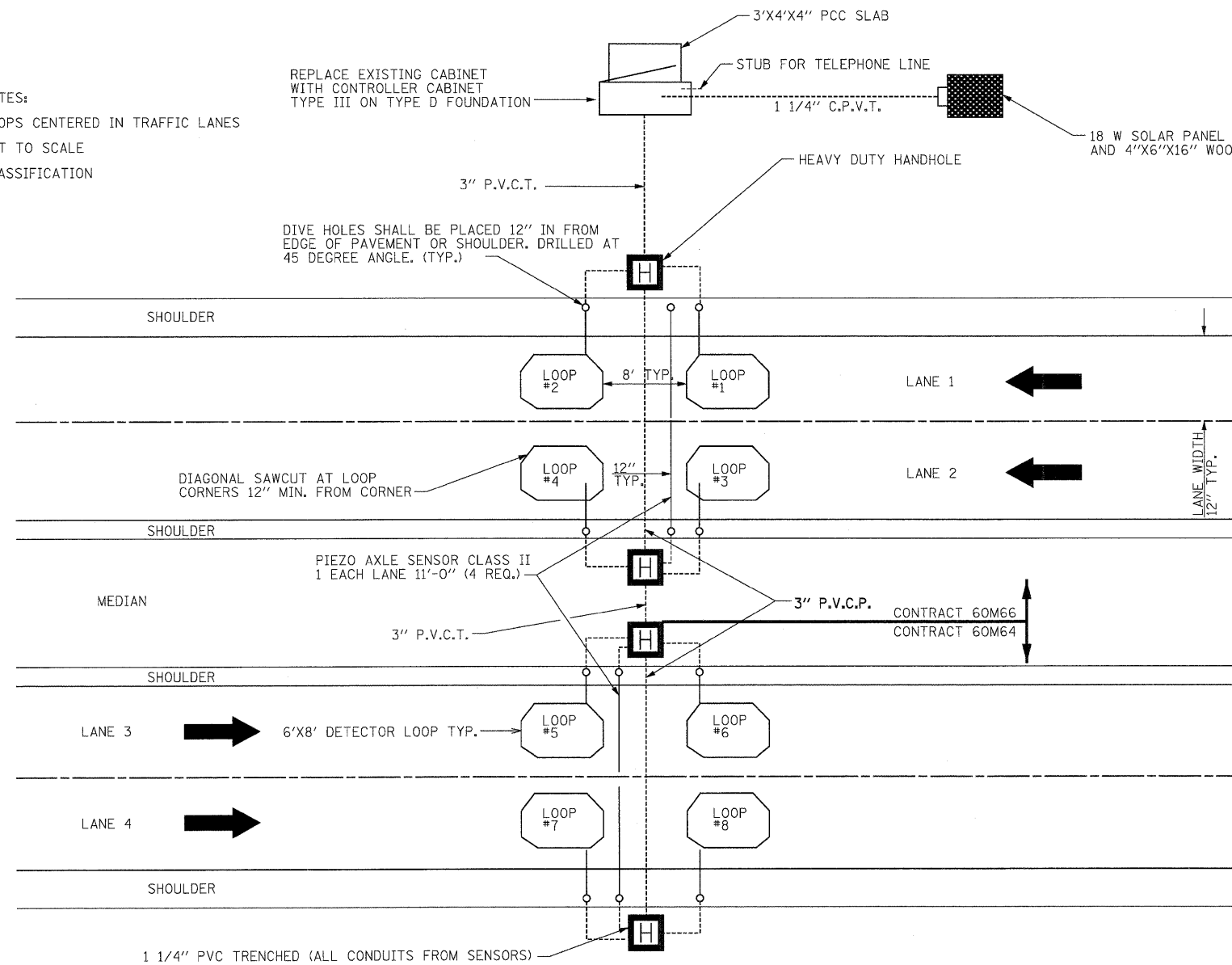
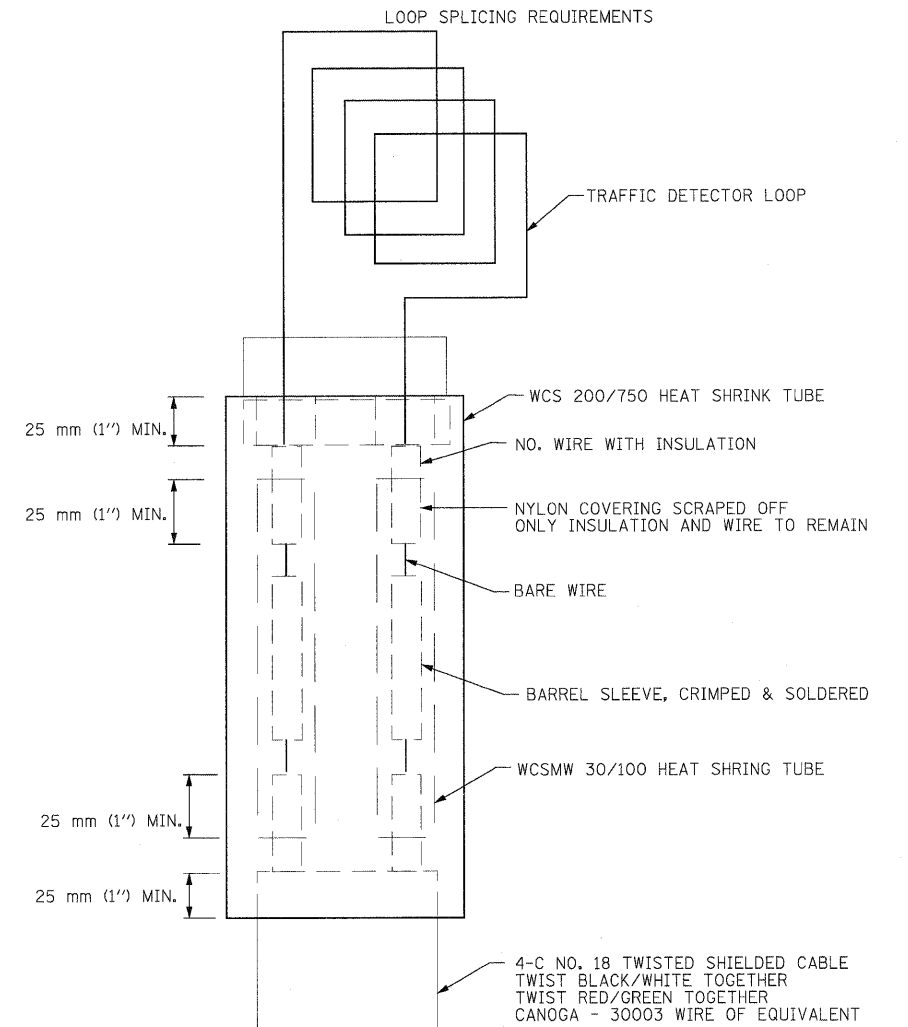


NOTES:  
 LOOPS CENTERED IN TRAFFIC LANES  
 NOT TO SCALE  
 CLASSIFICATION



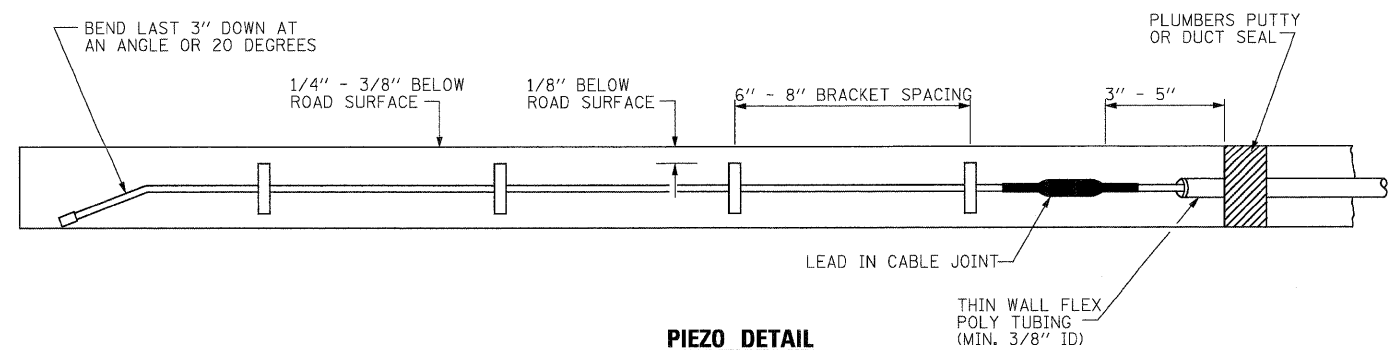
LAYOUT FOR ATR 1840  
 925' EAST OF CHERRY HILL ROAD



MINIMUM 25 mm (1") HEAT SHRINK TUBE OVERLAP ON WIRE. PVC & SHIELDED CABLE TO FORM WATER TIGHT SEAL.

NOTE: NOT TO SCALE

LOOP SPLICING REQUIREMENTS



PIEZO DETAIL

USER NAME = koeppen/Rwy_Lisle	DESIGNED -	REVISED - CPK
PLOT CONFIG = PDF(Large).plt	DRAWN -	REVISED - JAC
PLOT SCALE = 1:50	CHECKED -	REVISED - DTH
PLOT DATE = 1/18/2011	DATE -	REVISED - 1/20/2011



STATE OF ILLINOIS  
 DEPARTMENT OF TRANSPORTATION

TRAFFIC SENSOR DETAIL  
 NEAR CHERRY HILL ROAD

F.A.I. RTE.	SECTION	COUNTY	TOTAL SHEETS	SHEET NO.
80	99 (4 & 4-1) RS-3	WILL	203	92
FED. ROAD DIST. NO. 1 [ILLINOIS] FED. AID PROJECT			CONTRACT NO. 60M66	