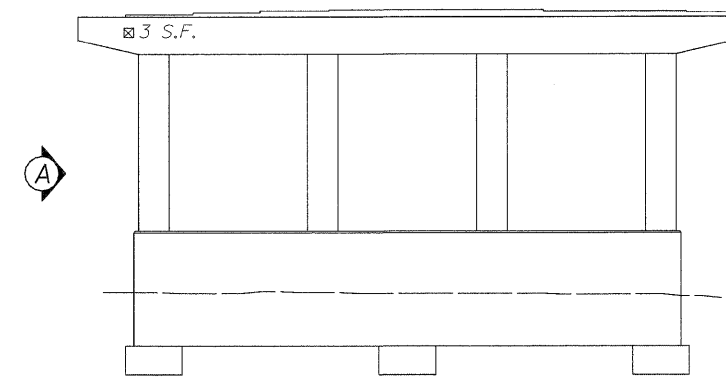
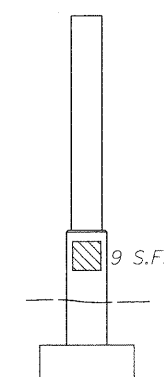


**WEST ELEVATION**  
(Looking East)



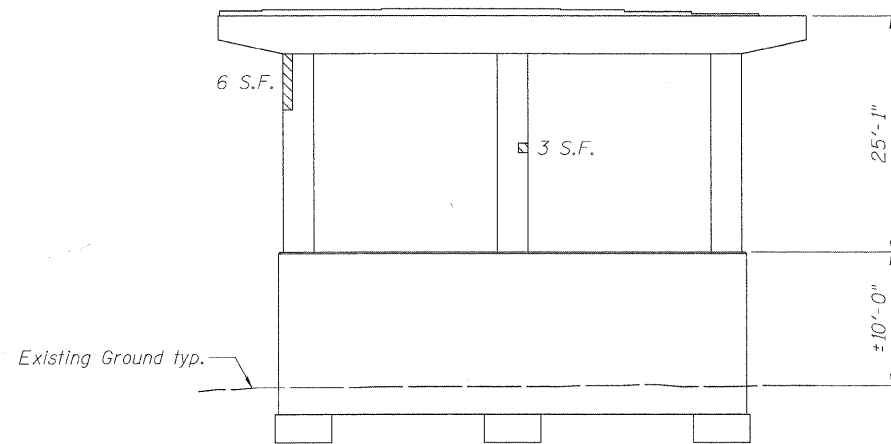
**EAST ELEVATION**  
(Looking West)



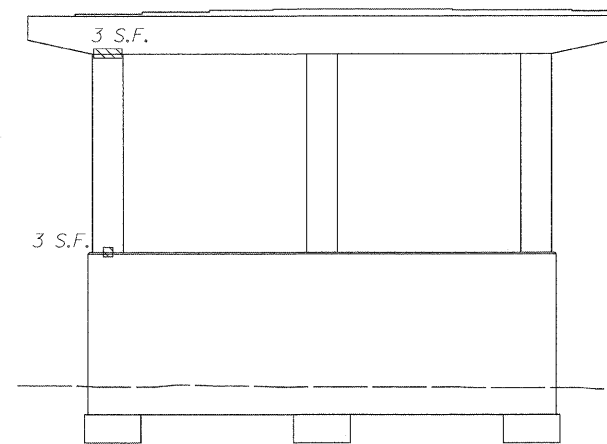
**VIEW A**

**PIER 1**

- Structural Repair of Concrete (Depth < 5") = 21 Sq. Ft.
- Structural Repair of Concrete (Depth > 5") = 10 Sq. Ft.



**WEST ELEVATION**  
(Looking East)



**EAST ELEVATION**  
(Looking West)

**PIER 2**

- Structural Repair of Concrete (Depth < 5") = 15 Sq. Ft.
- Structural Repair of Concrete (Depth > 5") = 0 Sq. Ft.

DESIGNED - DF	REVISED -		<b>STATE OF ILLINOIS</b> <b>DEPARTMENT OF TRANSPORTATION</b>	<b>PIER REPAIR DETAILS</b>		F.A.I. RTE.	SECTION	COUNTY	TOTAL SHEETS	SHEET NO.	
USER NAME = Imueller	DRAWN - LAM			REVISED -	<b>WESTBOUND FAI-80 OVER DES PLAINES RIVER</b>		80	99(4&4-1)RS-3	WILL	203	132
PLOT SCALE = NTS	CHECKED - BLU			REVISED -	<b>STRUCTURE NO. 099-0057</b>		CONTRACT NO. 60M66				
PLOT DATE = 1/19/2011 2:48:00 PM	DATE = 1/20/2011			REVISED -	SHEET NO. S-23 OF S-35 SHEETS		FED. ROAD DIST. NO. [ILLINOIS] FED. AID PROJECT				

S:\056\05.CADD\CADD\_Sheet\0990057-60M66-023-FRI-2.dgn