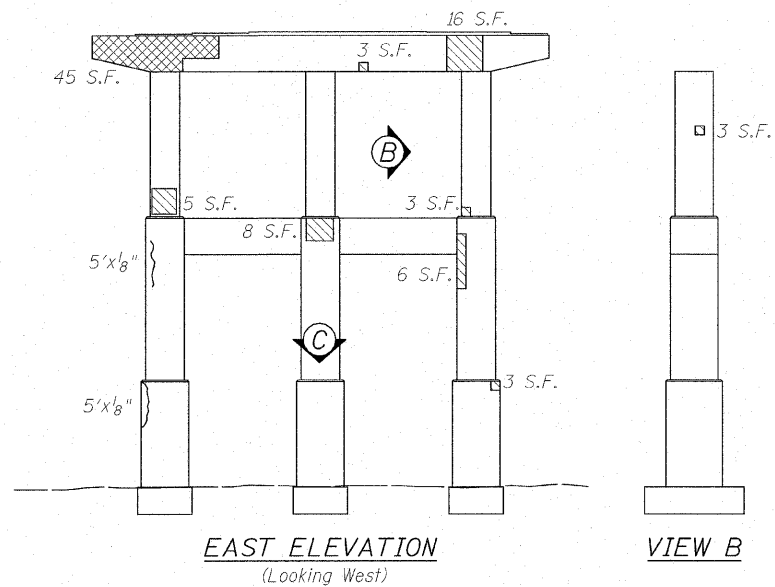
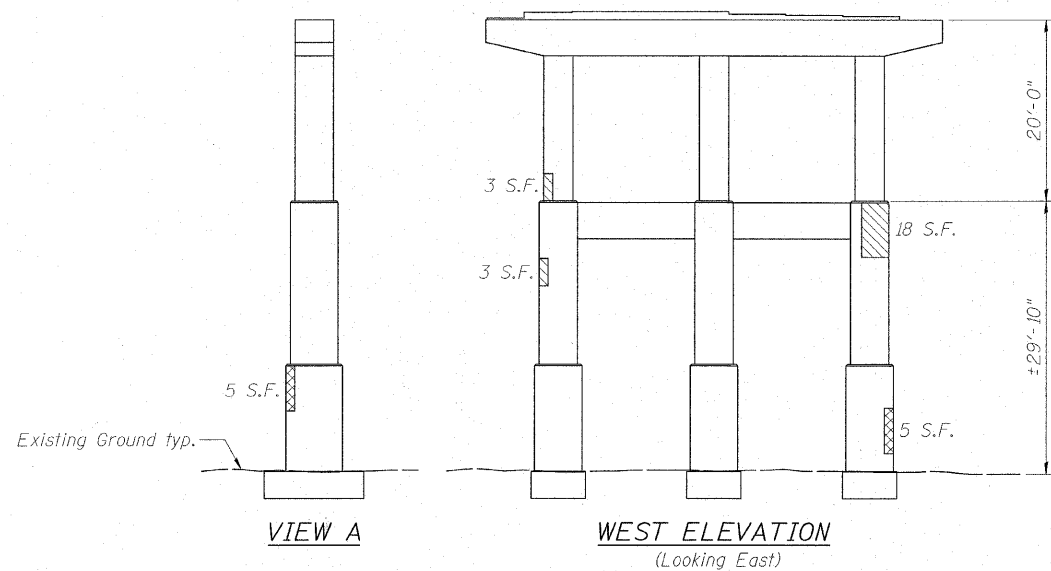


PIER 3

- Structural Repair of Concrete (Depth  $\leq$  5") = 127 Sq. Ft.
- Structural Repair of Concrete (Depth  $>$  5") = 24 Sq. Ft.

NOTES: See Sheet S-20 for Temporary Shoring and Cribbing, Special locations.



PIER 4

- Structural Repair of Concrete (Depth  $\leq$  5") = 74 Sq. Ft.
- Structural Repair of Concrete (Depth  $>$  5") = 55 Sq. Ft.
- Epoxy Crack Injection

NOTES: See Sheet S-20 for Temporary Shoring and Cribbing, Special locations.

DESIGNED - DF	REVISIONS
DRAWN - LAM	REVISIONS
CHECKED - BLU	REVISIONS
DATE - 1/20/2011	REVISIONS



STATE OF ILLINOIS  
DEPARTMENT OF TRANSPORTATION

PIER REPAIR DETAILS 2  
WESTBOUND FAI-80 OVER DES PLAINES RIVER  
STRUCTURE NO. 099-0057

F.A.J. RTE.	SECTION	COUNTY	TOTAL SHEETS	SHEET NO.
80	99(4&4)-1RS-3	WILL	203	133
FED. ROAD DIST. NO.		ILLINOIS FED. AID PROJECT		

SHEET NO. S-24 OF S-35 SHEETS

CONTRACT NO. 60M66