
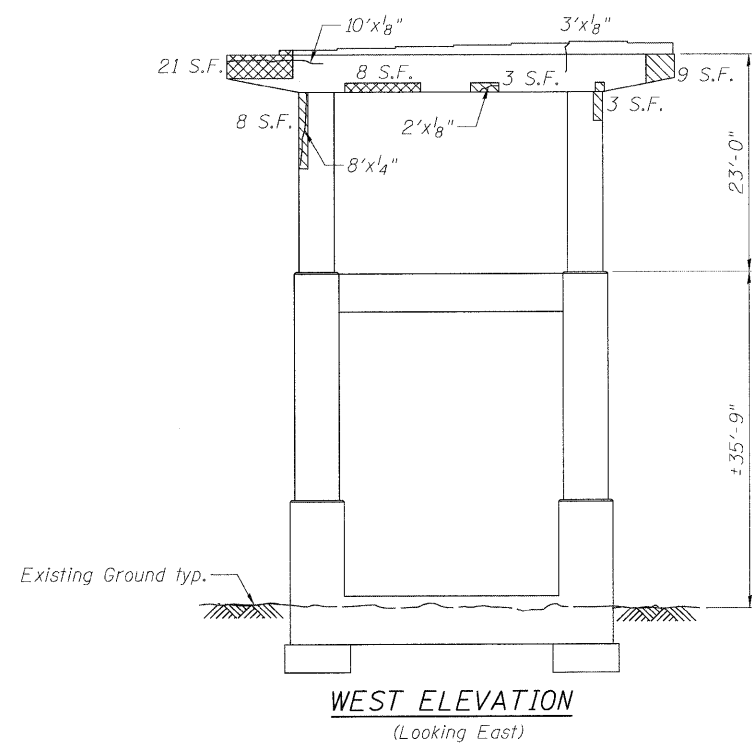
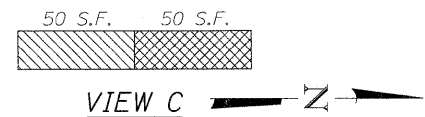


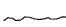
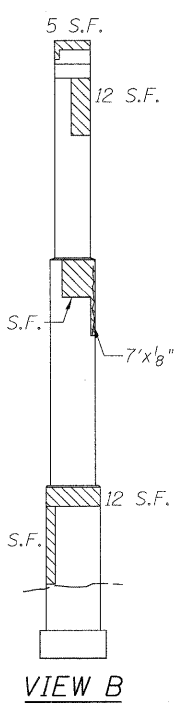
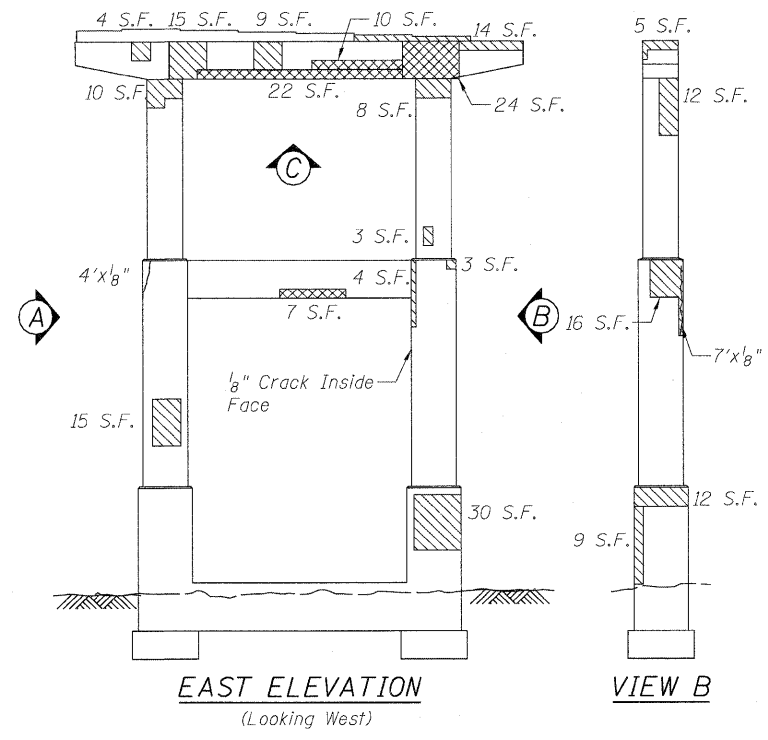
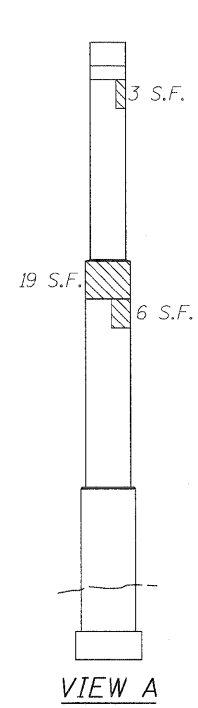
 Structural Repair of Concrete (Depth < 5") = 418 Sq. Ft.
 Structural Repair of Concrete (Depth > 5") = 105 Sq. Ft.

NOTES: See Sheet S-20 for Temporary Shoring and Cribbing, Special locations.



 Structural Repair of Concrete (Depth < 5") = 270 Sq. Ft.
 Structural Repair of Concrete (Depth > 5") = 142 Sq. Ft.
 Epoxy Crack Injection

NOTES: See Sheet S-20 for Temporary Shoring and Cribbing, Special locations.



DESIGNED - DF	REVISED -
DRAWN - LAM	REVISED -
CHECKED - BLU	REVISED -
DATE - 1/20/2011	REVISED -



STATE OF ILLINOIS
DEPARTMENT OF TRANSPORTATION

PIER REPAIR DETAILS
WESTBOUND FAI-80 OVER DES PLAINES RIVER
STRUCTURE NO. 099-0057

F.A.I. RTE.	SECTION	COUNTY	TOTAL SHEETS	SHEET NO.
80	99(4&4-1)RS-3	WILL	203	139
FED. ROAD DIST. NO.			ILLINOIS FED. AID PROJECT	