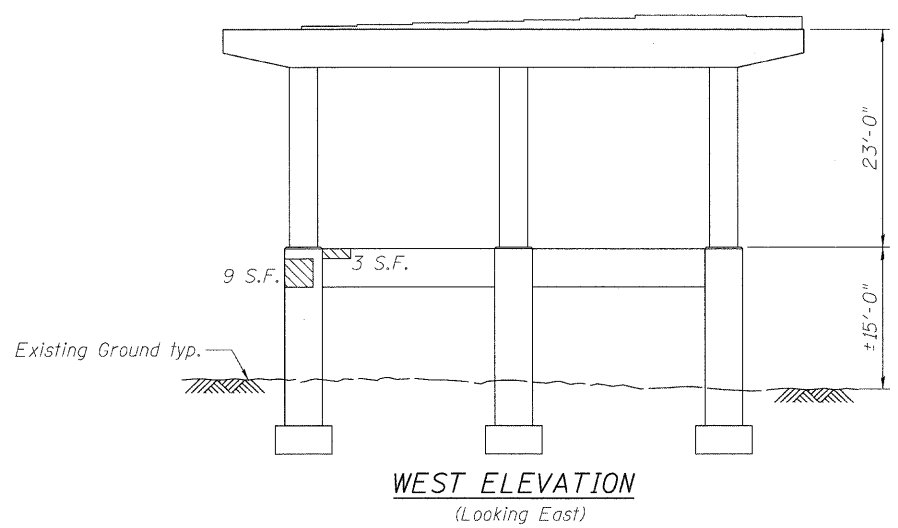


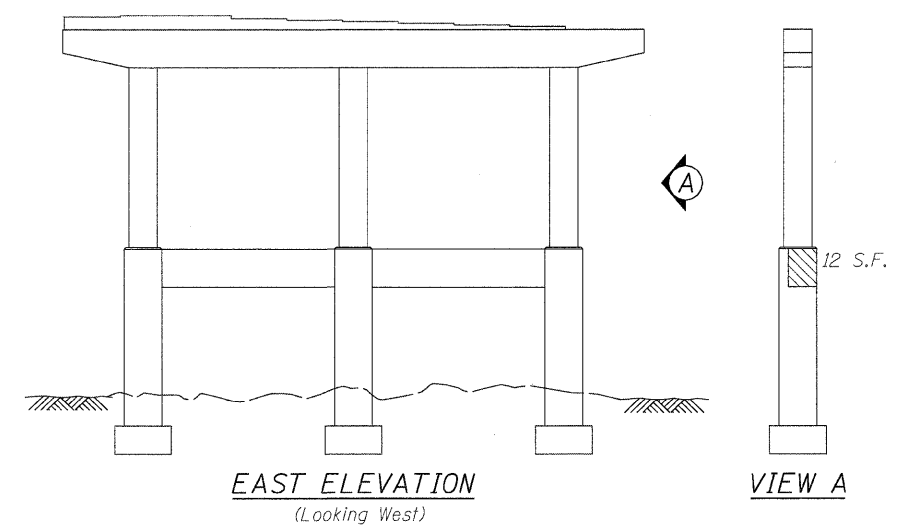
PIER 23

- Structural Repair of Concrete (Depth < 5") = 254 Sq. Ft.
- Structural Repair of Concrete (Depth > 5") = 22 Sq. Ft.
- Epoxy Crack Injection



PIER 24

- Structural Repair of Concrete (Depth < 5") = 24 Sq. Ft.
- Structural Repair of Concrete (Depth > 5") = 0 Sq. Ft.



DESIGNED - DF	REVISED -
DRAWN - LAM	REVISED -
CHECKED - BLU	REVISED -
DATE - 1/20/2011	REVISED -



STATE OF ILLINOIS  
DEPARTMENT OF TRANSPORTATION

PIER REPAIR DETAILS  
WESTBOUND FAI-80 OVER DES PLAINES RIVER  
STRUCTURE NO. 099-0057  
SHEET NO. S-34 OF S-35 SHEETS

F.A.I. RTE.	SECTION	COUNTY	TOTAL SHEETS	SHEET NO.
80	99(4&4-1)RS-3	WILL	203	143
FED. ROAD DIST. NO.			ILLINOIS FED. AID PROJECT	
			CONTRACT NO. 60M66	

S:\10568\05.CADD\CADD Sheets\10990057-60M66-034-PR23 24.dgn