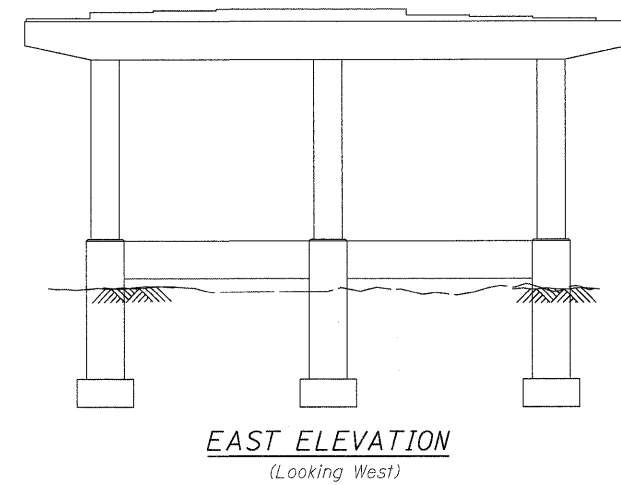
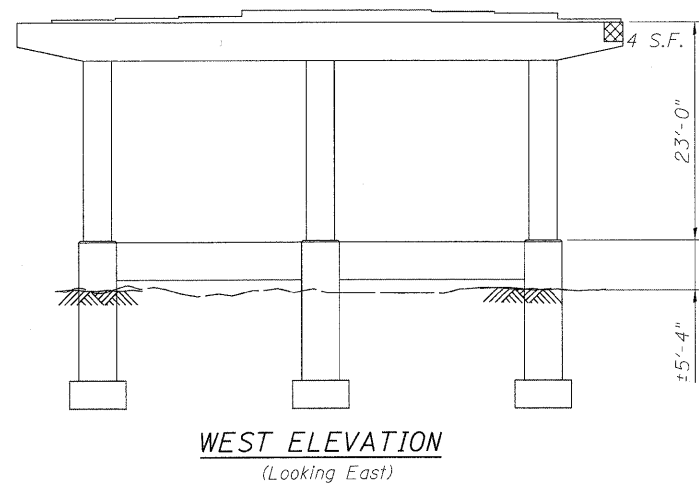


PIER 25

- Structural Repair of Concrete (Depth < 5") = 9 Sq. Ft.
- Structural Repair of Concrete (Depth > 5") = 0 Sq. Ft.



PIER 26

- Structural Repair of Concrete (Depth < 5") = 0 Sq. Ft.
- Structural Repair of Concrete (Depth > 5") = 4 Sq. Ft.

NOTES: See Sheet S-20 for Temporary Shoring and Cribbing, Special location.

DESIGNED - DF	REVISED -
USER NAME = Ittuelier	REVISED -
DRAWN - LAM	REVISED -
PLOT SCALE = NTS	REVISED -
CHECKED - BLU	REVISED -
PLOT DATE = 1/19/2011 2:18:28 PM	REVISED -
DATE - 1/20/2011	



STATE OF ILLINOIS
DEPARTMENT OF TRANSPORTATION

PIER REPAIR DETAILS
WESTBOUND FAI-80 OVER DES PLAINES RIVER
STRUCTURE NO. 099-0057

SHEET NO. S-35 OF S-35 SHEETS

F.A.I. RTE.	SECTION	COUNTY	TOTAL SHEETS	SHEET NO.
80	99(4&4-1)RS-3	WILL	203	144
FED. ROAD DIST. NO.			ILLINOIS FED. AID PROJECT	
			CONTRACT NO. 60M66	