

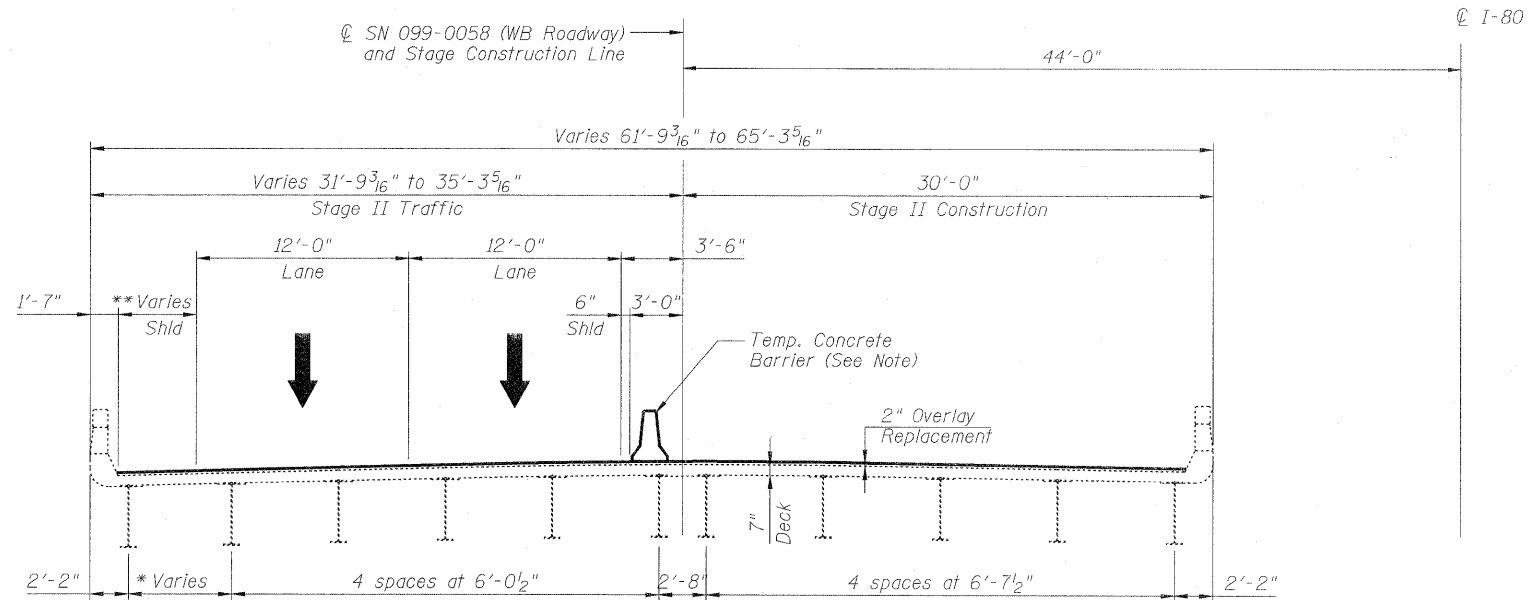
* Varies 4'-1³/₁₆" to 7'-7⁵/₁₆"

STAGE I CONSTRUCTION & TRAFFIC

(Looking East)

TOTAL BILL OF MATERIAL

ITEM	UNIT	SUPER	SUB	TOTAL
Polymerized Hot-Mix Asphalt Surface Course, Stone Matrix Asphalt, N80	Ton	142	-	142
Slopewall Removal	Sq. Yd.	85	-	85
Slopewall, 4"	Sq. Yd.	85	-	85
Protective Shield (Permanent)	Sq. Yd.	641	-	641
Hot-Mix Asphalt Surface Removal (Deck)	Sq. Yd.	1268	-	1,268
Structural Repair of Concrete (Depth <= 5")	Sq. Ft.	-	110	110
Structural Repair of Concrete (Depth > 5")	Sq. Ft.	-	446	446
Deck Slab Repair (Full Depth, Type II)	Sq. Yd.	86	-	86
Deck Slab Repair (Partial)	Sq. Yd.	149	-	149
Silicone Joint Sealer, 1"	Foot	63	-	63
Silicone Joint Sealer, 1 3/4"	Foot	126	-	126
Silicone Joint Sealer, 2 3/4"	Foot	63	-	63
Temporary Shoring and Cribbing	Each	5	-	5



* Varies 4'-1³/₁₆" to 7'-7⁵/₁₆"

** Varies 2'-8³/₁₆" to 6'-2⁵/₁₆"

STAGE II CONSTRUCTION & TRAFFIC

(Looking East)

Note:

After removal of temporary concrete barrier, repair dowel holes with non-shrink epoxy grout as directed by the Engineer. Cost of anchorage and repair is included with Temporary Concrete Barrier.

USER NAME = a9org100glwRdwy_L191e1	DESIGNED - A.Y./L.C.	REVISED -	HBP Illinois Partners	STATE OF ILLINOIS DEPARTMENT OF TRANSPORTATION	CONSTRUCTION STAGING AND TOTAL BILL OF MATERIAL WESTBOUND I-80 OVER IL ROUTE 53 (CHICAGO STREET) SN 099-0058	F.A.I. RTE.	SECTION	COUNTY	TOTAL SHEETS	SHEET NO.
PLOT CONFIG = PDF(I-80_TopoGrey_Large).p	DRAWN - L.C./A.Y.	REVISED -				80	99 (4&4-1) RS-3	WILL	203	146
PLOT SCALE = 1/8"=1'-0"	CHECKED - A.Y./R.L.D.	REVISED -				CONTRACT NO. 60M66				
PLOT DATE = 2/8/2011	DATE - 01/20/2011	REVISED -				FED. ROAD DIST. NO. 1 ILLINOIS FED. AID PROJECT				