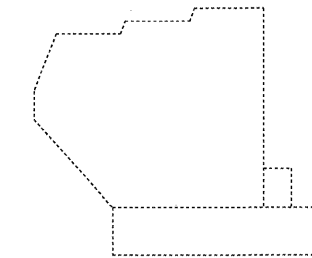
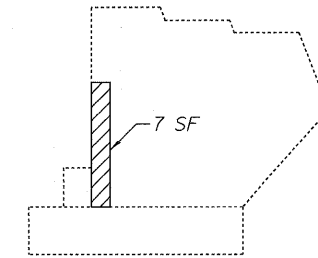


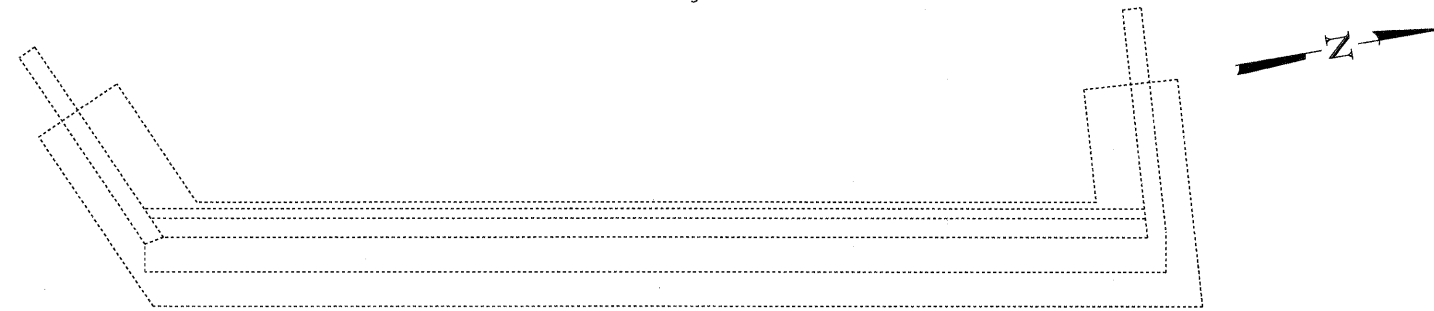
ELEVATION - NORTHWEST ABUTMENT
Looking West



ELEVATION - SOUTH WINGWALL
Outside Face

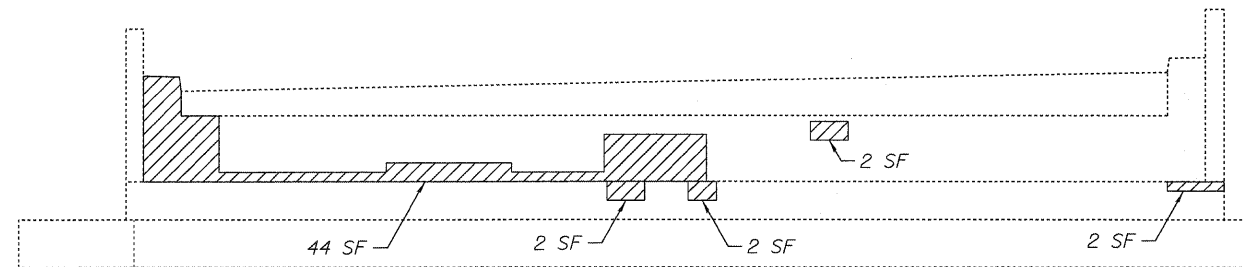


ELEVATION - NORTH WINGWALL
Outside Face

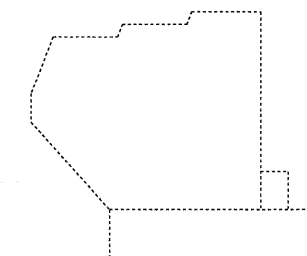


PLAN - NORTHWEST ABUTMENT

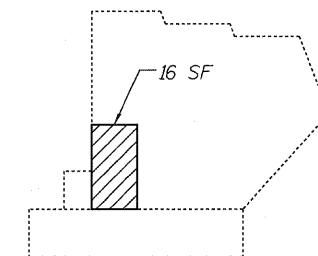
NORTHWEST ABUTMENT



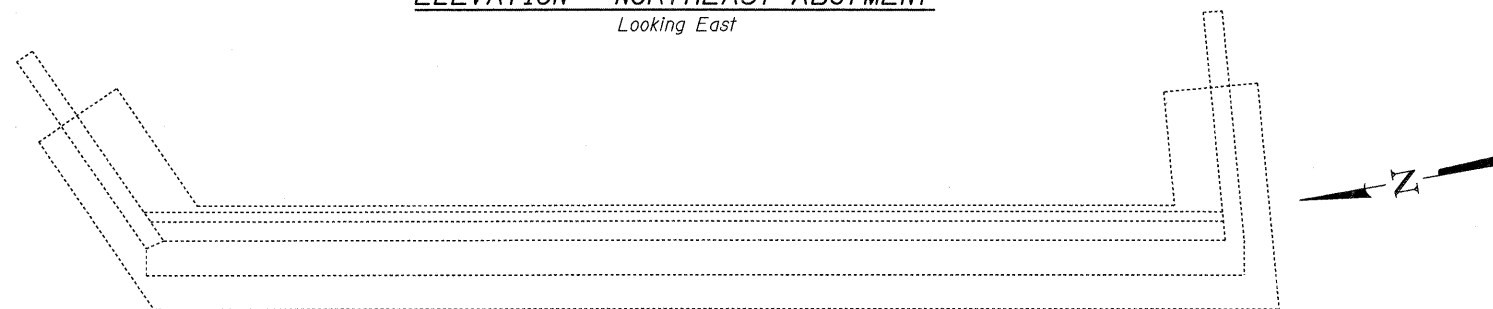
ELEVATION - NORTHEAST ABUTMENT
Looking East



ELEVATION - NORTH WINGWALL
Outside Face



ELEVATION - SOUTH WINGWALL
Outside Face



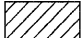
PLAN - NORTHEAST ABUTMENT

NORTHEAST ABUTMENT

BILL OF MATERIAL

ITEM	UNIT	TOTAL
Structural Repair Of Concrete (Depth Greater Than 5 Inches)	Sq.Ft.	63
Structural Repair Of Concrete (Depth Equal To Or Less Than 5 Inches)	Sq.Ft.	87

LEGEND:

 Spalled or unsound concrete - SF indicates square feet.

NOTES:

- Areas of proposed abutment repairs are estimated. Actual type, location and dimensions of abutment repairs are to be determined by the Engineer during construction.

DESIGNED - PCA	REVISED -
USER NAME = lsupencheck	DRAWN - LK
PLOT SCALE = 1:1	CHECKED - MEA
PLOT DATE = 19-JAN-2011	DATE - 01/21/2011
REVISED -	REVISED -



STATE OF ILLINOIS
DEPARTMENT OF TRANSPORTATION

ABUTMENT REPAIRS
WESTBOUND FAI-80 OVER HICKORY CREEK
STRUCTURE NO. 099-0063

SHEET NO. S-4 OF 8 SHEETS

F.A.I. RTE.	SECTION	COUNTY	TOTAL SHEETS	SHEET NO.
80	99 (4&4-1) RS-3	WILL	203	169
CONTRACT NO. 60M66			FED. ROAD DIST. NO. 1 ILLINOIS FED. AID PROJECT	