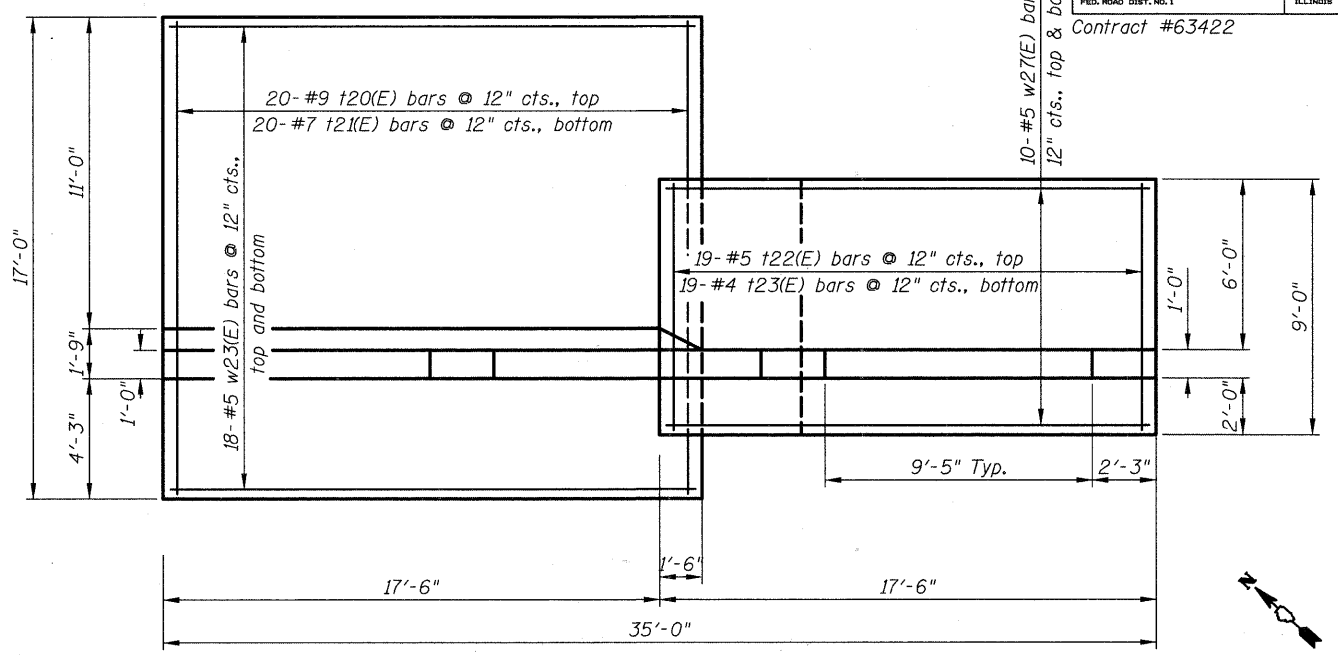
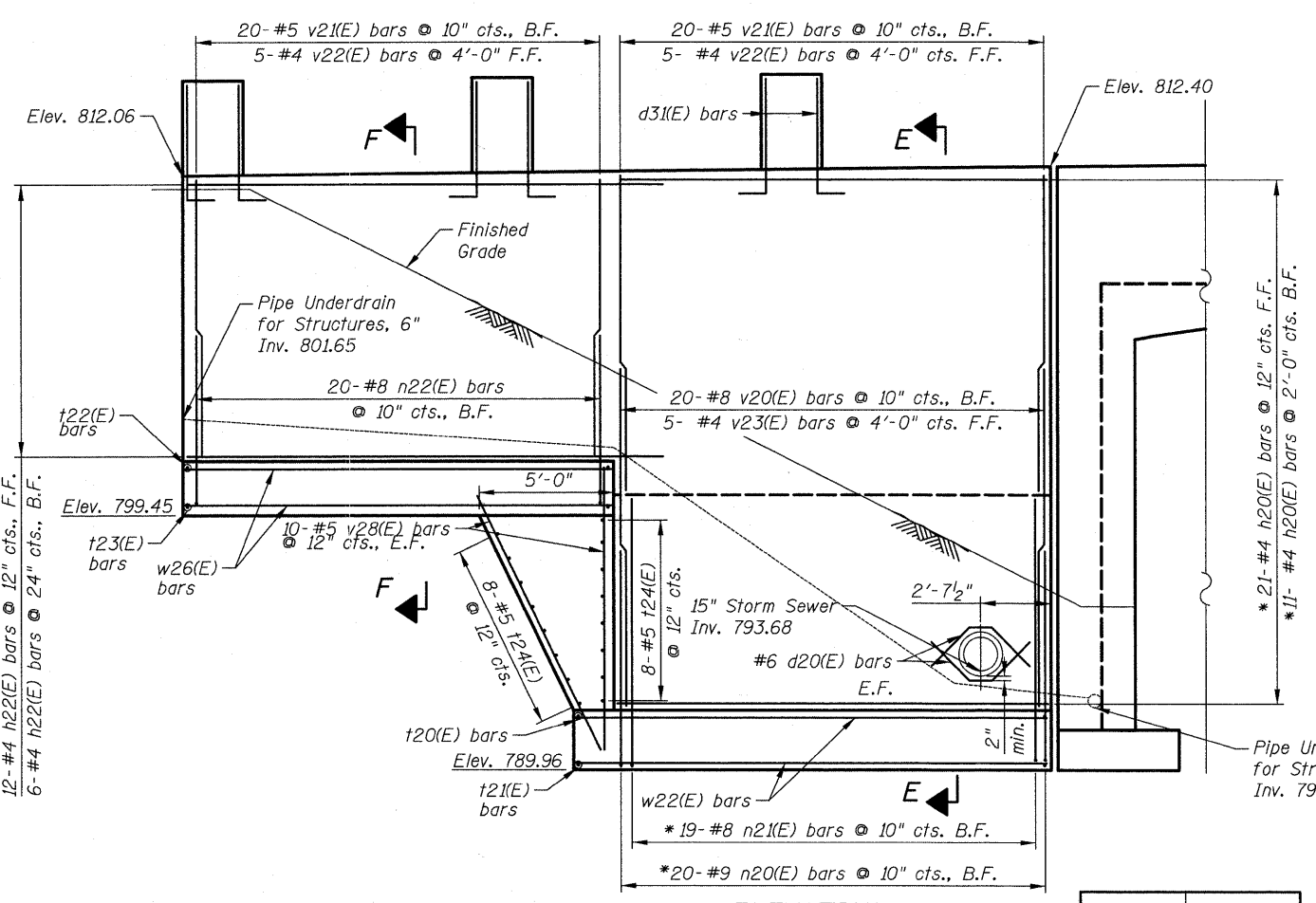


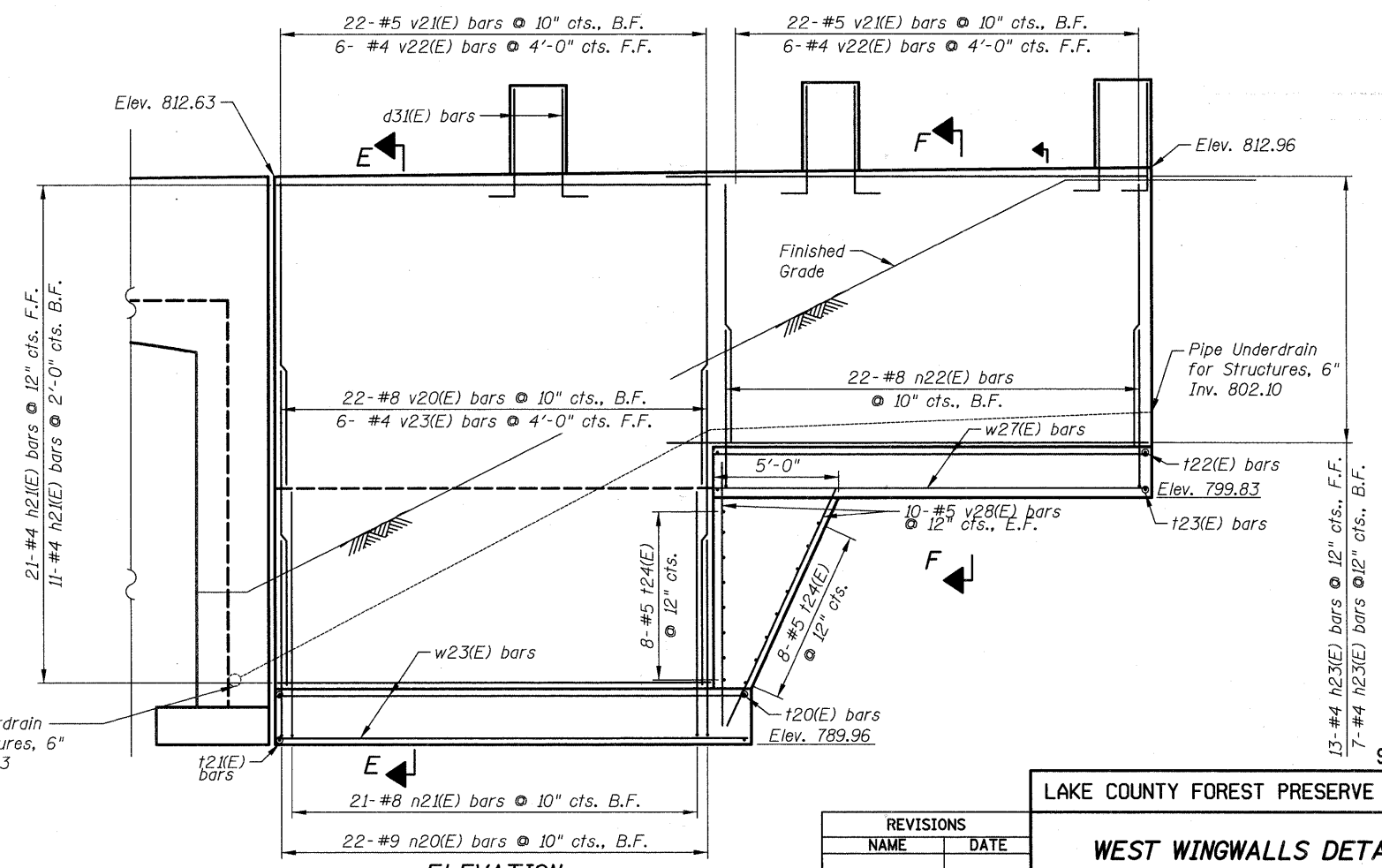
PLAN
NW Wingwall



PLAN
SW Wingwall



ELEVATION
NW Wingwall



ELEVATION
SW Wingwall

Bar Size	Class C
#4	1'-8"
#5	2'-2"
#6	2'-7"
#7	3'-5"
#8	4'-6"
#9	5'-9"

- Notes:
- See Sheet S7 of S11 for Bill of Material and Bar diagrams.
 - See Sheet S7 of S11 for Section A-A and B-B.
 - See Sheet s8 for pilaster details and Bill of Material.

* Cut Bars to Accommodate Storm Sewer

REVISIONS	
NAME	DATE

LAKE COUNTY FOREST PRESERVE DISTRICT

WEST WINGWALLS DETAILS
GILMER ROAD TRAIL UNDERPASS
SEC 08-F3000-07-BT
STA. 274+14.15
STRUCTURE NO. 049-N006

DRAWN BY: D. Atkins
 CHECKED BY: G. Hatlestad
 DATE: December 17, 2010

j:\210\phase 2\cad\sheet\07_struct\05_w_wingwall.dwg
 12/15/2010 12:24 PM

450 E Devon Ave, Suite 300
 Itasca, Illinois 60143
 Tel: 630.773.3900 Fax: 630.773.3975
 www.civiltechinc.com