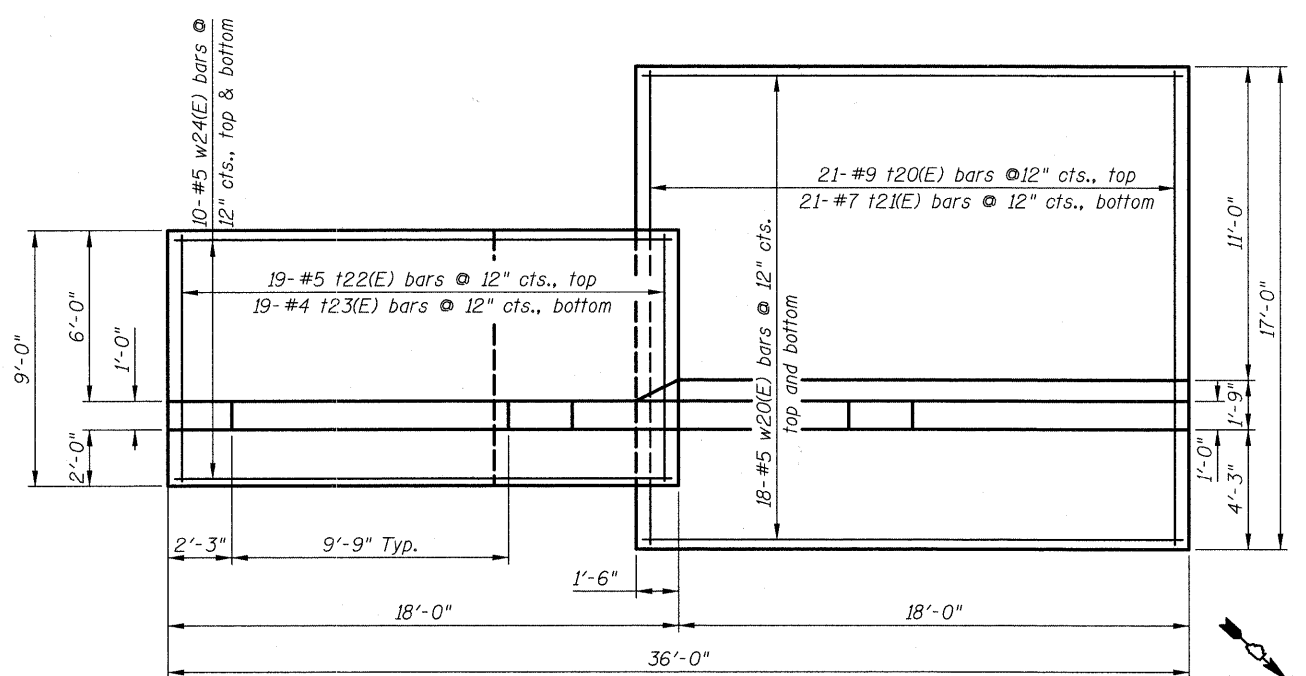
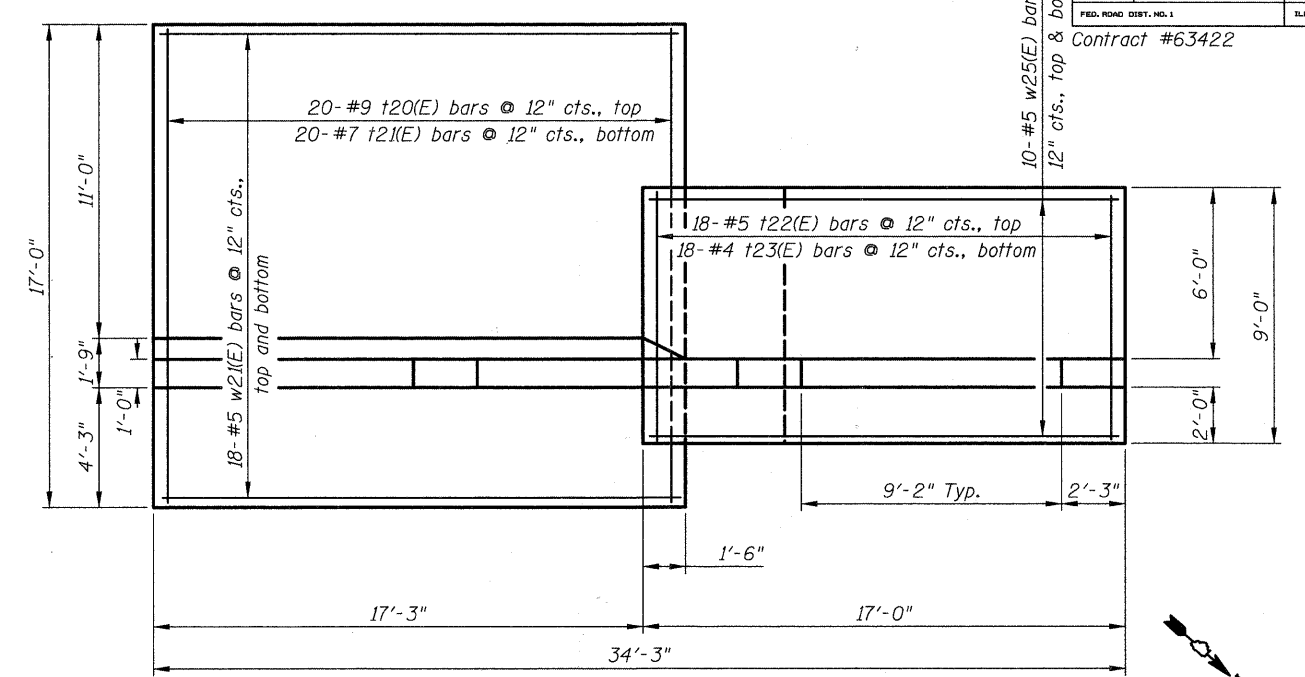


TALE ROUTE NO.	SECTION	COUNTY	TOTAL SHEETS	SHEET
3602	08-F3000-07-BT	LAKE	60	19
FED. ROAD DIST. NO. 1		ILLINOIS	FED. AID PROJECT-	

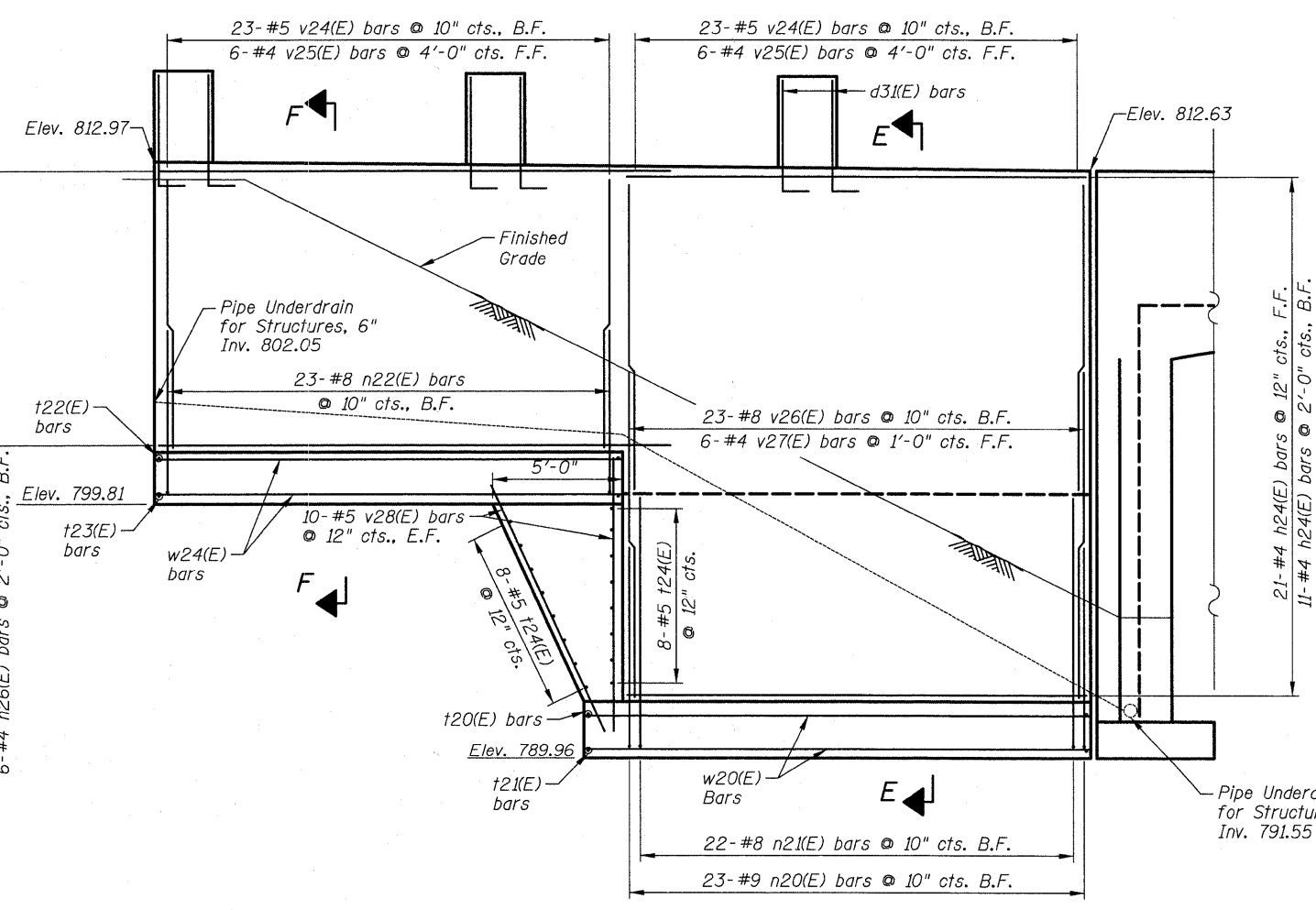
Contract #63422



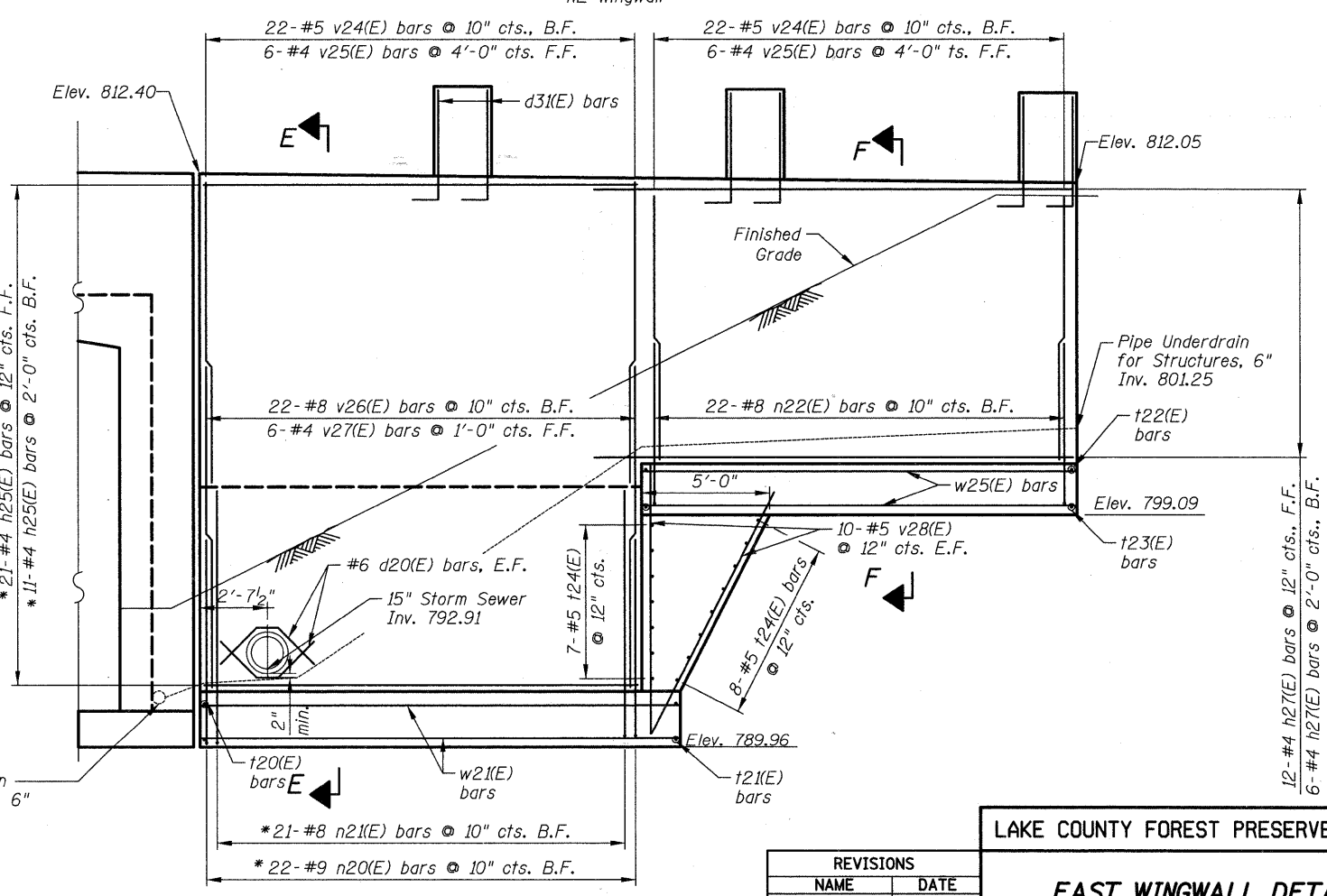
PLAN
SE Wingwall



PLAN
NE Wingwall



ELEVATION
SE Wingwall



ELEVATION
NE Wingwall

- Notes:
- See Sheet S7 of S11 for Bill of Material and Bar diagrams.
 - See Sheet S7 of S11 for Section E-E and F-F.
 - See Sheet S8 of S11 for Pilaster details and Bill of Material.

* Cut Bars to Accommodate Storm Sewer.

REVISIONS	
NAME	DATE

LAKE COUNTY FOREST PRESERVE DISTRICT

EAST WINGWALL DETAILS
GILMER ROAD TRAIL UNDERPASS
SEC 08-F3000-07-BT
STA. 274+14.15
STRUCTURE NO. 049-N006

DRAWN BY: D. Atkins
 CHECKED BY: G. Hatlestad
 DATE: December 17, 2010

450 E Devon Ave, Suite 300
 Itasca, Illinois 60143
 Tel: 630.773.3900 Fax: 630.773.3975
 www.civiltechinc.com

j:\230\phase 2\cadd\sheet\07_struct\06_e_wingwall.dwg
 12/15/2010 12:27 PM