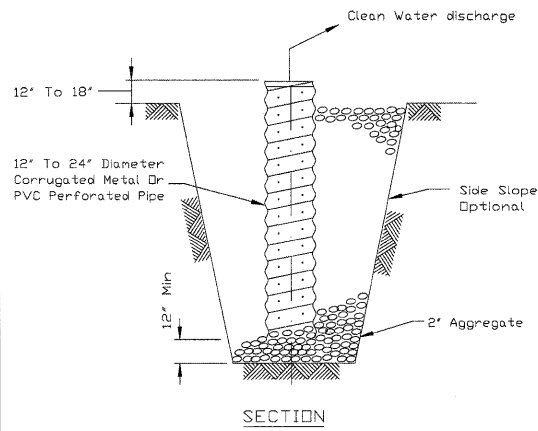


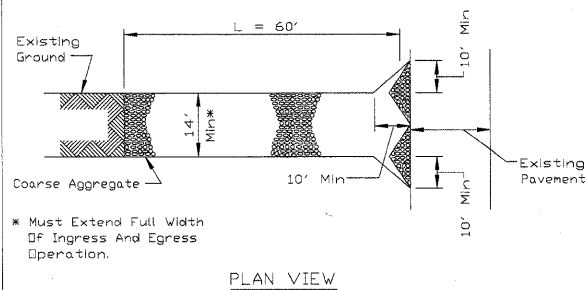
SUMP PIT PLAN



- NOTES:
- Item to be included as needed as part of 'Underwater Structure Excavation Protection - Location 1' and 'Underwater Structure Excavation - Location 2.'
 - The standpipe will be constructed by perforating a 12'-24' diameter corrugated metal or PVC pipe.
 - A base of 2' aggregate will be placed in the pit to a minimum depth of 12'. After installing the standpipe, the pit surrounding the standpipe will then be backfilled with 2' aggregate.
 - The standpipe will extend 12' to 18' above the lip of the pit.
 - If discharge will be pumped directly to a storm drainage system, the standpipe will be wrapped with filter fabric before installation.
 - If desired, 1/4'-1/2' hardware cloth may be placed around the standpipe prior to attaching the filter fabric. This will increase the rate of water seepage into the pipe.

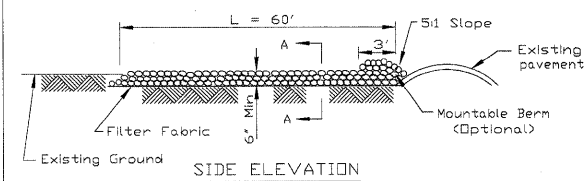
REFERENCE Project _____		STANDARD DWG. NO. IL-650
Designed _____		SHEET 1 OF 1
Checked _____		DATE 8-11-94
Approved _____		

STABILIZED CONSTRUCTION ENTRANCE PLAN



* Must Extend Full Width Of Ingress And Egress Operation.

PLAN VIEW

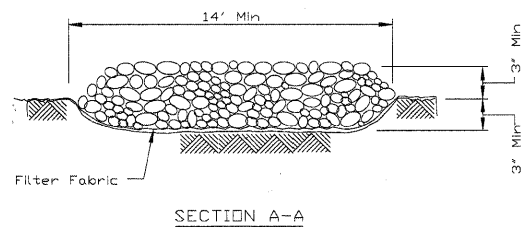


SIDE ELEVATION

- NOTES:
- Filter fabric shall meet the requirements of material specification 592 GEDTEXTILE, Table I or 2, Class I, II or IV and shall be placed over the cleared area prior to the placing of rock.
 - Rock or reclaimed concrete shall meet one of the following IDDT coarse aggregate gradation, CA-1, CA-2, CA-3 or CA-4 and be placed according to construction specification 25 ROCKFILL using placement Method 1 and Class III compaction.
 - Any drainage facilities required because of washing shall be constructed according to manufacturers specifications.
 - If wash racks are used they shall be installed according to the manufacturer's specifications.

REFERENCE Project _____		STANDARD DWG. NO. IL-630
Designed _____		SHEET 1 OF 2
Checked _____		DATE 8-18-94
Approved _____		

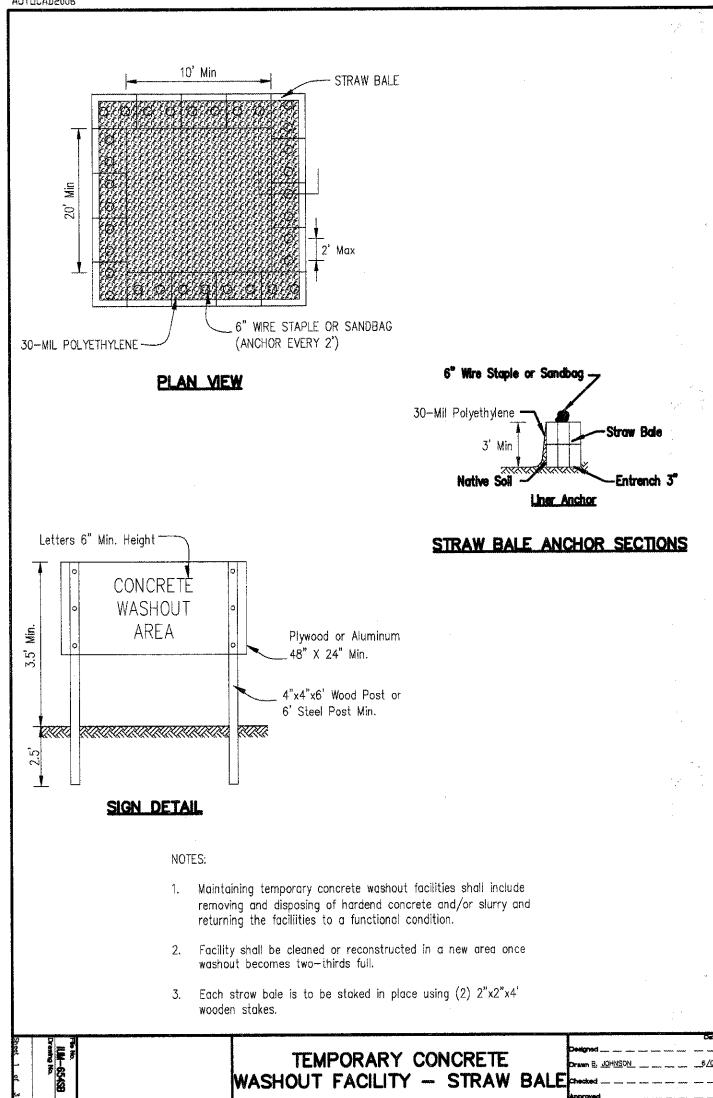
STABILIZED CONSTRUCTION ENTRANCE PLAN



SECTION A-A

REFERENCE Project _____		STANDARD DWG. NO. IL-630
Designed _____		SHEET 2 OF 2
Checked _____		DATE 8-18-94
Approved _____		

AUTOCAD2006



PLAN VIEW

STRAW BALE ANCHOR SECTIONS

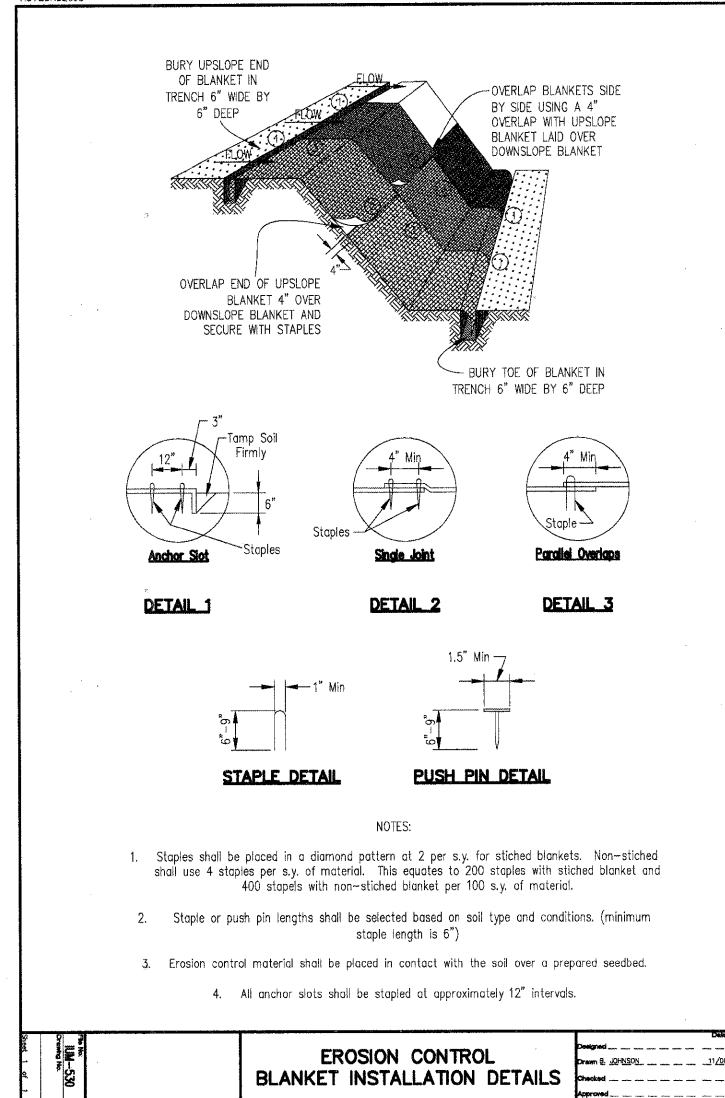
SIGN DETAIL

- NOTES:
- Maintaining temporary concrete washout facilities shall include removing and disposing of hardened concrete and/or slurry and returning the facilities to a functional condition.
 - Facility shall be cleaned or reconstructed in a new area once washout becomes two-thirds full.
 - Each straw bale is to be staked in place using (2) 2"x2"x4' wooden stakes.

TEMPORARY CONCRETE WASHOUT FACILITY - STRAW BALE

DESIGNED _____	DATE _____
CHECKED _____	DATE _____
APPROVED _____	DATE _____

AUTOCAD2006



DETAIL 1 ANCHOR SLOT, DETAIL 2 SINGLE JOINT, DETAIL 3 PARALLEL OVERLAP

STAPLE DETAIL, PUSH PIN DETAIL

- NOTES:
- Staples shall be placed in a diamond pattern at 2 per s.y. for stitched blankets. Non-stitched shall use 4 staples per s.y. of material. This equates to 200 staples with stitched blanket and 400 staples with non-stitched blanket per 100 s.y. of material.
 - Staple or push pin lengths shall be selected based on soil type and conditions. (minimum staple length is 6")
 - Erosion control material shall be placed in contact with the soil over a prepared seedbed.
 - All anchor slots shall be stapled at approximately 12' intervals.

EROSION CONTROL BLANKET INSTALLATION DETAILS

DESIGNED _____	DATE _____
CHECKED _____	DATE _____
APPROVED _____	DATE _____

FILE NAME = P:\CIBEL - WEST Projects\2020\122946 Foxboro-FPH\1\G:\1\Ugn\Nahs\ER00102.dgn

WBK WILLS BURKE KELSEY ASSOCIATES LTD.
116 West Main Street, Suite 201
St. Charles, Illinois 60174
(630) 443-7755

USER NAME = #USER#	DESIGNED - PV	REVISED - 10/5/10
PLOT SCALE = N/A	DRAWN - NP	REVISED -
PLOT DATE = 12/20/2010	CHECKED - PV	REVISED -
	DATE - 12/20/10	REVISED -

STATE OF ILLINOIS DEPARTMENT OF TRANSPORTATION

EROSION CONTROL & SEDIMENT DETAILS & SPECIFICATIONS

SCALE: N/A	SHEET NO. 21 OF 58 SHEETS	STA. TO STA.	F.A. RTE.	SECTION	COUNTY	TOTAL SHEETS	SHEET NO.
				05-F3000-06-BT	KANE	58	21
			CONTRACT NO. 63517				
			FED. ROAD DIST. NO. ILLINOIS FED. AID PROJECT				