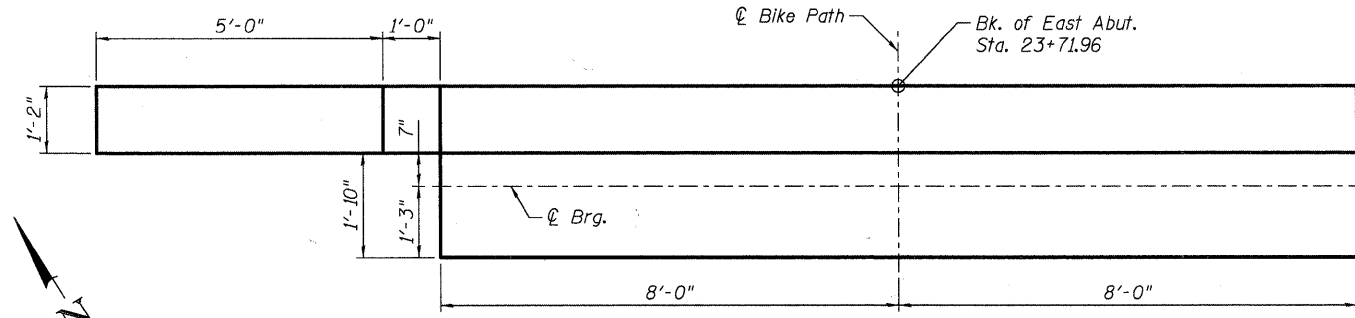
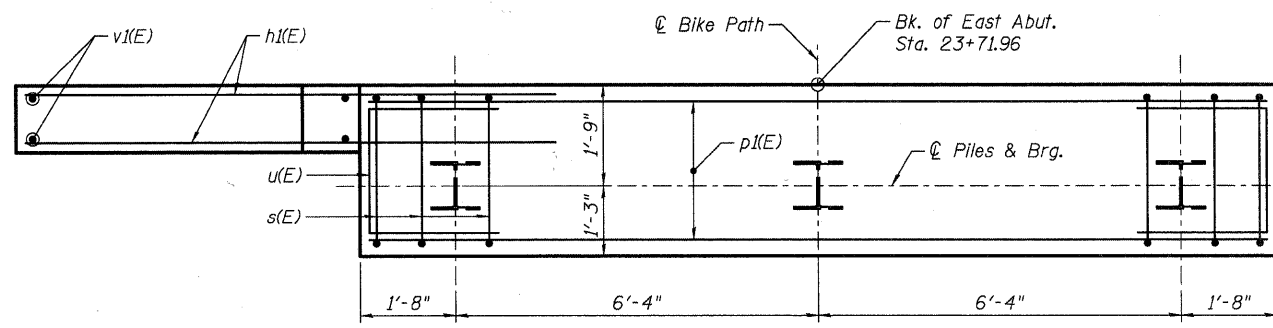


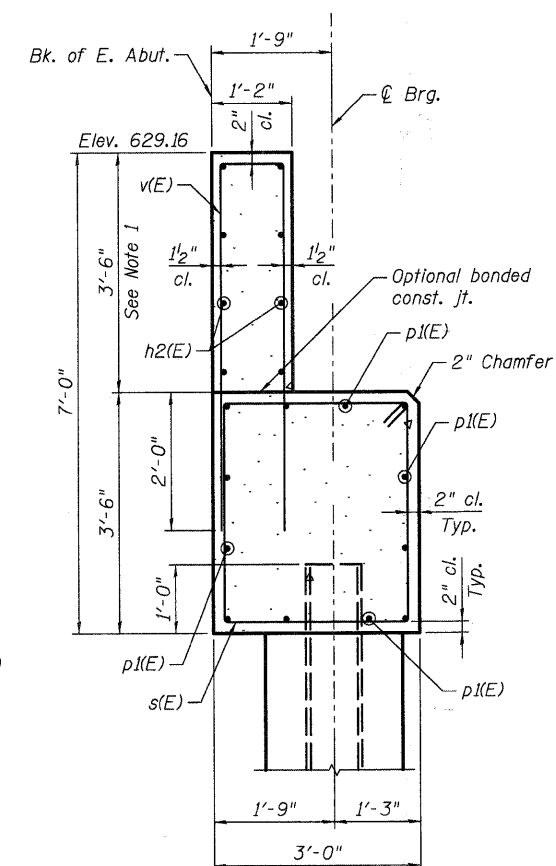
ELEVATION



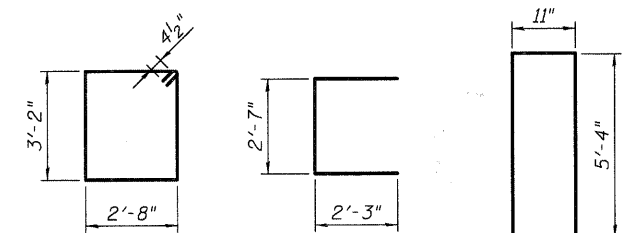
TOP VIEW



PLAN - PILE CAP

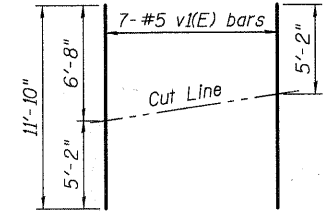


SECTION THRU ABUTMENT



BAR s(E) BAR u(E) BAR v(E)

PILE DATA
 Type: Steel HP 12x53 w/pile shoes
 Nominal Required Bearing: 419 kips
 Allowable Resistance Available: 140 kips
 Est. Length: 25 ft.
 No. Production Piles: 2
 No. Test Piles: 1



FIELD CUTTING DIAGRAM

Order v1(E) bars full length. Cut as shown and use remainder of bars in opposite face.

**EAST ABUTMENT
BILL OF MATERIAL**

Bar	No.	Size	Length	Shape
h1(E)	20	#5	9'-3"	—
h2(E)	8	#5	15'-8"	—
p1(E)	12	#7	15'-8"	—
s(E)	17	#4	12'-5"	□
u(E)	8	#6	7'-1"	□
v1(E)	17	#5	11'-7"	—
v2(E)	7	#5	11'-10"	—
Structure Excavation	Cu. Yd.		51	
Concrete Structures	Cu. Yd.		10.3	
Concrete Encasement	Cu. Yd.		1.1	
Reinforcement Bars, Epoxy Coated	Pound		1,226	
Furnishing Steel Piles, HP 12x53	Foot		50	
Driving Piles	Foot		50	
Test Pile Steel, HP 12x53	Each		1	
Pile Shoes	Each		3	
Concrete Sealer	Sq. Ft.		147	

NOTES

- Height of abutment backwall is dependent on Pedestrian Truss Superstructure geometry. Backwall height shall be adjusted accordingly with approval of the Engineer. The abutment backwall elevation shall not be adjusted.
- The abutment seat elevation(s) shall be coordinated with the Contractor and the requirements of the Pedestrian Truss Superstructure with approval from the Engineer.
- All bearing assemblies are to be supplied by the Pedestrian Truss Superstructure fabricator. All bearing assemblies shall conform to IDOT standards and shall meet material certification requirements.
- Anchor bolt size and spacing shall be as required by the Pedestrian Truss Superstructure fabricator. The cost of furnishing and placing anchor bolts shall be considered included in the cost of Concrete Structures.
- Concrete Sealer shall be applied to exposed concrete surfaces.
- E.F. refers to Each Face
- For details of piles and Concrete Encasement, see Sheet 16.

**EAST ABUTMENT
BICYCLE BRIDGE OVER FOX RIVER**

DESIGNED -	DLS
CHECKED -	AEU
DRAWN -	AWH
CHECKED -	DLS

WILLS BURKE KELSEY ASSOCIATES LTD. 116 West Main Street, Suite 201 St. Charles, Illinois 60174 (630) 443-7755	SHEET NO. 7 24 SHEETS	F.A.U RTE.	SECTION	COUNTY	TOTAL SHEETS	SHEET NO.
			05-F3000-06-BT	KANE	58	28
		CONTRACT NO. 63517				
		FED. ROAD DIST. NO.	ILLINOIS	FED. AID PROJECT		

PLOT DATE = 12/28/2010
 FILE NAME = P:\CBEL WEST Projects\2009\123148 FourTr-PhII\Structural\Drawings\BikeBrdg-907-Abut.dgn