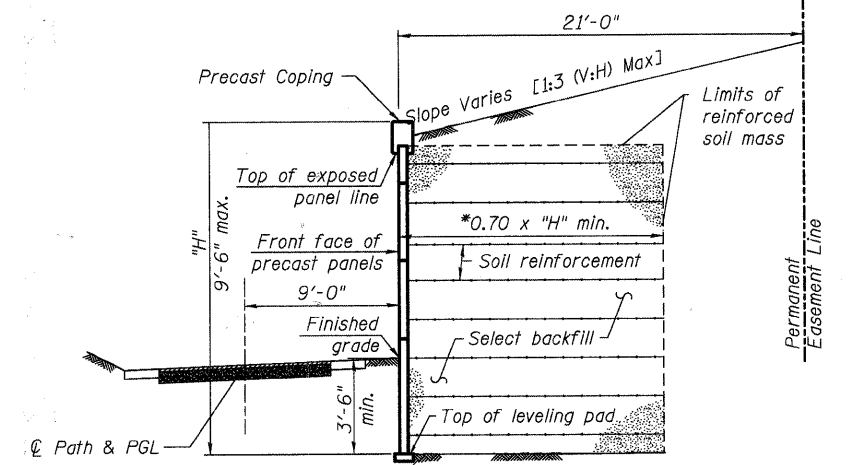
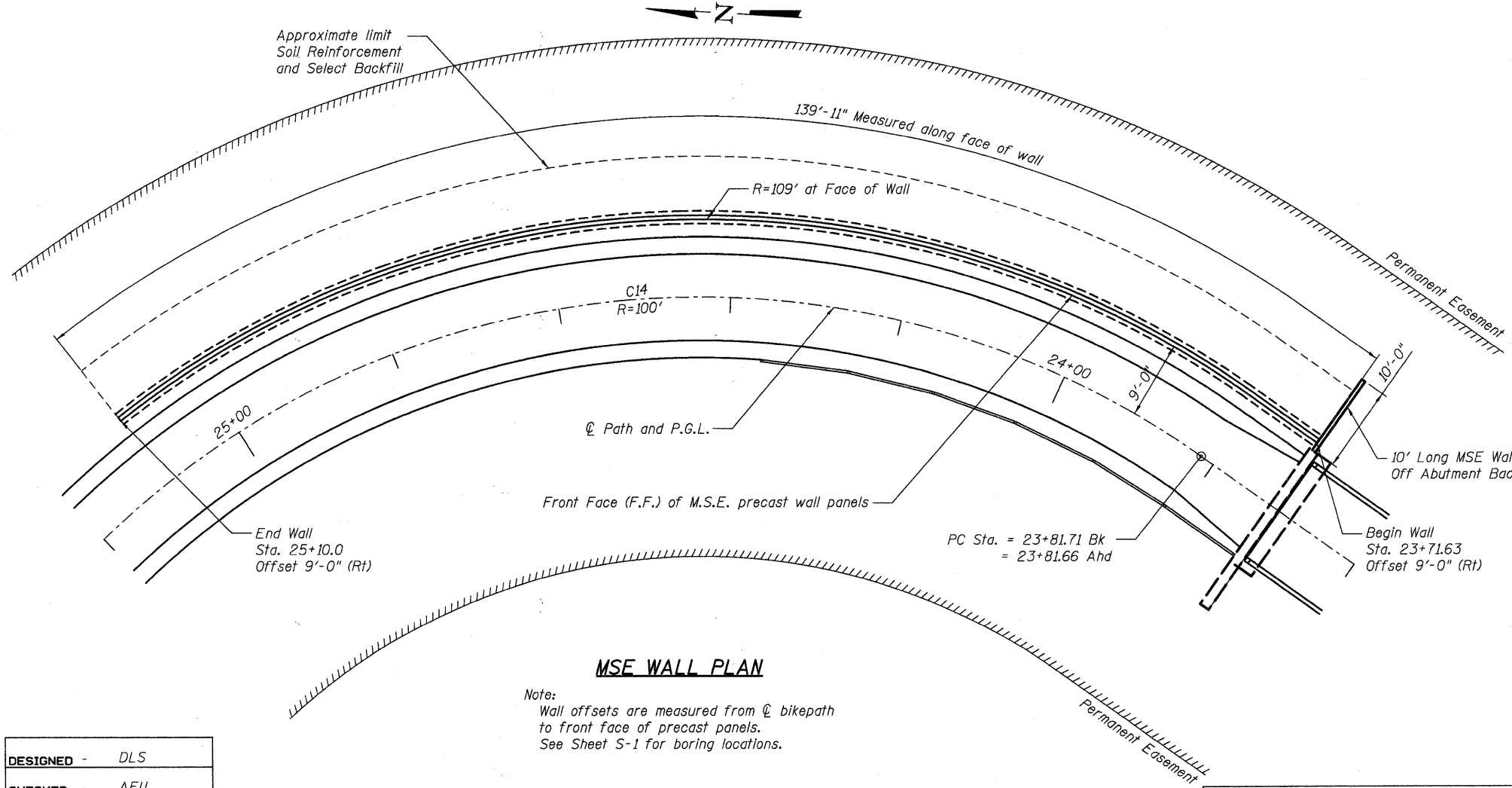


MSE WALL ELEVATION
(Looking East from centerline of Path)

Sta. Eq. 23+81.71 Bk
= 23+81.66 Ahd



SECTION THRU MSE WALL



MSE WALL PLAN

Note:
Wall offsets are measured from centerline of bikepath to front face of precast panels.
See Sheet S-1 for boring locations.

BILL OF MATERIAL

Item	Unit	Total
Mechanically Stabilized Earth Retaining Wall	Sq. Ft.	1,384
Structure Excavation	Cu. Yd.	514
Concrete Sealer	Sq. Ft.	766

NOTES

- All elevations shown are along P.G.L.
- The Contractor will be responsible to design and construct MSE walls according to IDOT Guide Bridge Special Provision "Mechanically Stabilized Earth Retaining Walls".

**MSE WALL
BICYCLE BRIDGE OVER FOX RIVER**

DESIGNED -	DLS
CHECKED -	AEU
DRAWN -	AWH
CHECKED -	DLS

WILLS BURKE KELSEY ASSOCIATES LTD.
116 West Main Street, Suite 201
St. Charles, Illinois 60174
(630) 443-7755

SHEET NO. 10
24 SHEETS

F.A.U RTE.	SECTION	COUNTY	TOTAL SHEETS	SHEET NO.
	05-F3000-06-BT	KANE	58	31
FED. ROAD DIST. NO.		ILLINOIS	FED. AID PROJECT	
CONTRACT NO. 63517				

PLOT DATE = 12/29/2010
 FILE NAME = P:\CIBEL\WEST\Projects\2009\123148\Foofv-T-Ph11\Structural\Open\Final\Plana\BikeBrdge-01B-MSEWall.dgn