

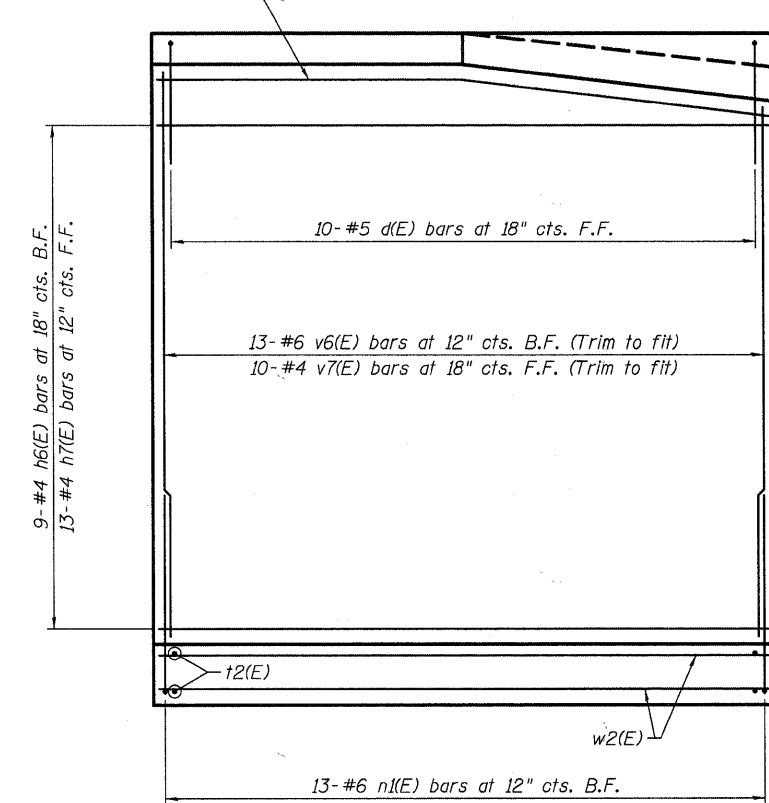
**NORTH AVENUE RETAINING WALLS  
BILL OF MATERIAL**

Bar	No.	Size	Length	Shape
a(E)	8	#5	13'-6"	—
a1(E)	3	#5	14'-1"	—
a2(E)	8	#5	14'-8"	—
a3(E)	3	#5	15'-3"	—
b(E)	8	#5	19'-3"	—
b1(E)	6	#5	19'-3"	—
d(E)	34	#5	4'-8"	—
d1(E)	22	#4	4'-2"	—
d2(E)	22	#4	4'-2"	—
h5(E)	13	#4	21'-2"	—
h6(E)	10	#4	12'-3"	—
h7(E)	14	#4	13'-1"	—
h8(E)	9	#4	6'-8"	—
h9(E)	13	#4	8'-0"	—
h10(E)	24	#4	9'-5"	—
h11(E)	10	#4	6'-5"	—
n(E)	53	#5	4'-5"	—
n1(E)	13	#6	5'-0"	—
t1(E)	52	#5	6'-2"	—
t2(E)	30	#5	9'-2"	—
t3(E)	8	#5	2'-8"	—
v4(E)	13	#5	12'-3"	—
v5(E)	8	#4	12'-3"	—
v6(E)	13	#6	12'-4"	—
v7(E)	16	#4	12'-4"	—
v8(E)	27	#5	12'-4"	—
v9(E)	8	#5	9'-9"	—
w1(E)	18	#5	21'-2"	—
w2(E)	12	#5	22'-0"	—
w3(E)	3	#4	6'-5"	—

Structure Excavation	Cu. Yd.	102
Concrete Structures	Cu. Yd.	35.7
Reinforcement Bars, Epoxy Coated	Pound	4,291
Steel Railing (Special)	Foot	21
Concrete Sealer	Sq. Ft.	296
Porous Granular Embankment (Special)	Cu. Yd.	36
Pipe Underdrain for Structures 4"	Foot	59
Geocomposite Wall Drain	Sq. Yd.	46
Concrete Bridge Rail (Special)	Foot	14
Underwater Structure	Each	1
Excavation Protection, Location 3		
Polymer Modified Portland Cement Mortar	Sq. Ft.	5.6
Silicone Joint Sealer	Foot	11.3

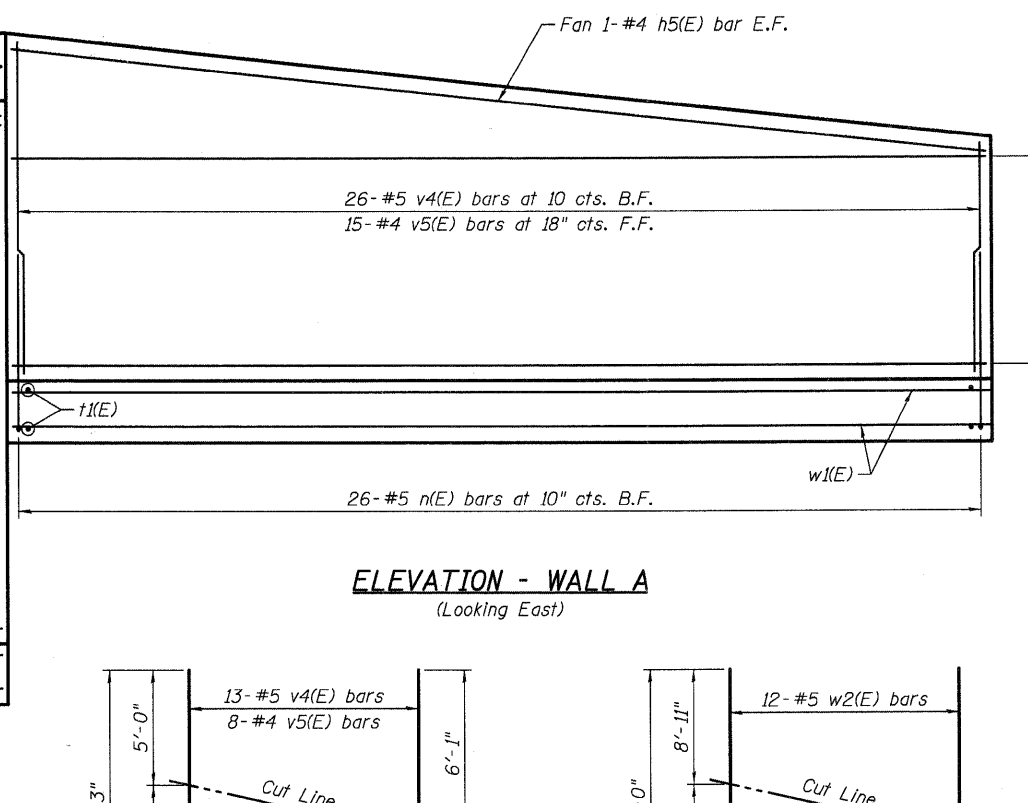
**WALL DETAILS II  
NORTH AVENUE RETAINING WALLS**

Bend 1- #4 h6(E) B.F.  
& 1- #4 h7(E) bar F.F.

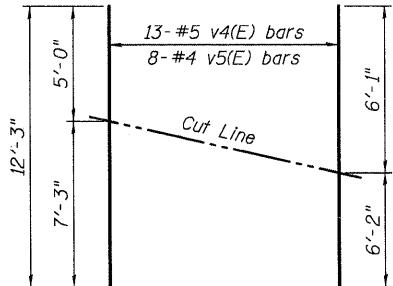


**ELEVATION - WALL A**  
(Looking East)

5- #4 h5(E) bars at 18" cts. B.F.  
6- #4 h5(E) bars at 12" cts. F.F.

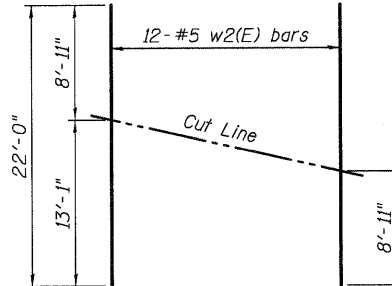


**ELEVATION - WALL B**  
(Looking East)



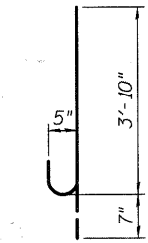
**FIELD CUTTING DIAGRAM**

Order bars full length. Cut as shown and use remainder in same face of wall.

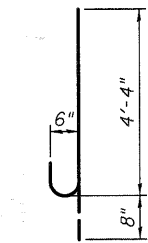


**FIELD CUTTING DIAGRAM**

Order bars full length. Cut as shown and use remainder in bottom of slab.

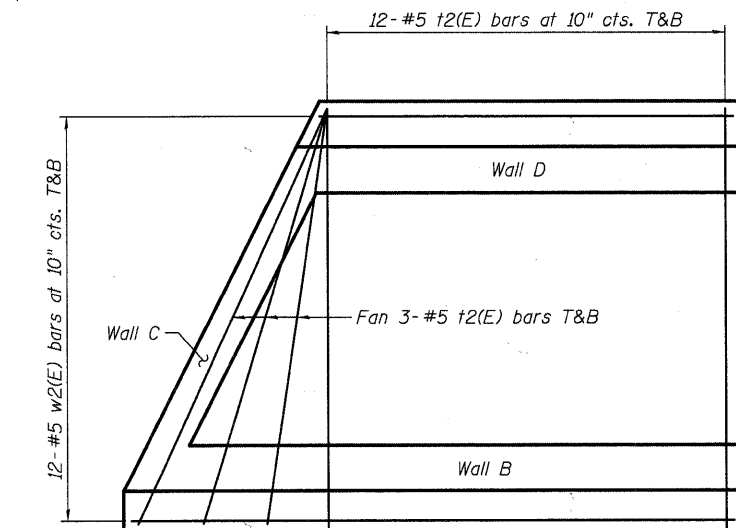


**BAR n(E)**

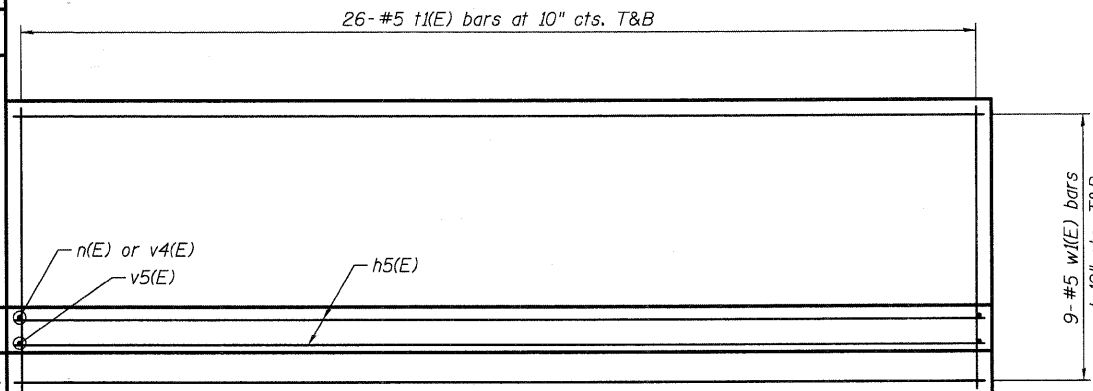


**BAR n1(E)**

F.F. refers to front face  
B.F. refers to back face  
E.F. refers to each face



**FOOTING PLAN  
WALLS B, C & D**



**FOOTING PLAN  
WALL A**

DESIGNED -	DLS
CHECKED -	AEU
DRAWN -	AWH
CHECKED -	DLS

**WILLS BURKE KELSEY ASSOCIATES LTD.**  
116 West Main Street, Suite 201  
St. Charles, Illinois 60174  
(630) 443-7755

SHEET NO. 13  
24 SHEETS

F.A.U RTE.	SECTION	COUNTY	TOTAL SHEETS	SHEET NO.
	05-F3000-06-BT	KANE	58	34
CONTRACT NO. 63517				
FED. ROAD DIST. NO.	ILLINOIS	FED. AID PROJECT		

PLOT DATE = 12/28/2010  
FILE NAME = P:\CDBEL WEST Projects\2009\123148 Footing - PHII Structural\Open V.mel\Plan\Bktdb.dwg - 013-Rev\Walls\101.dwg