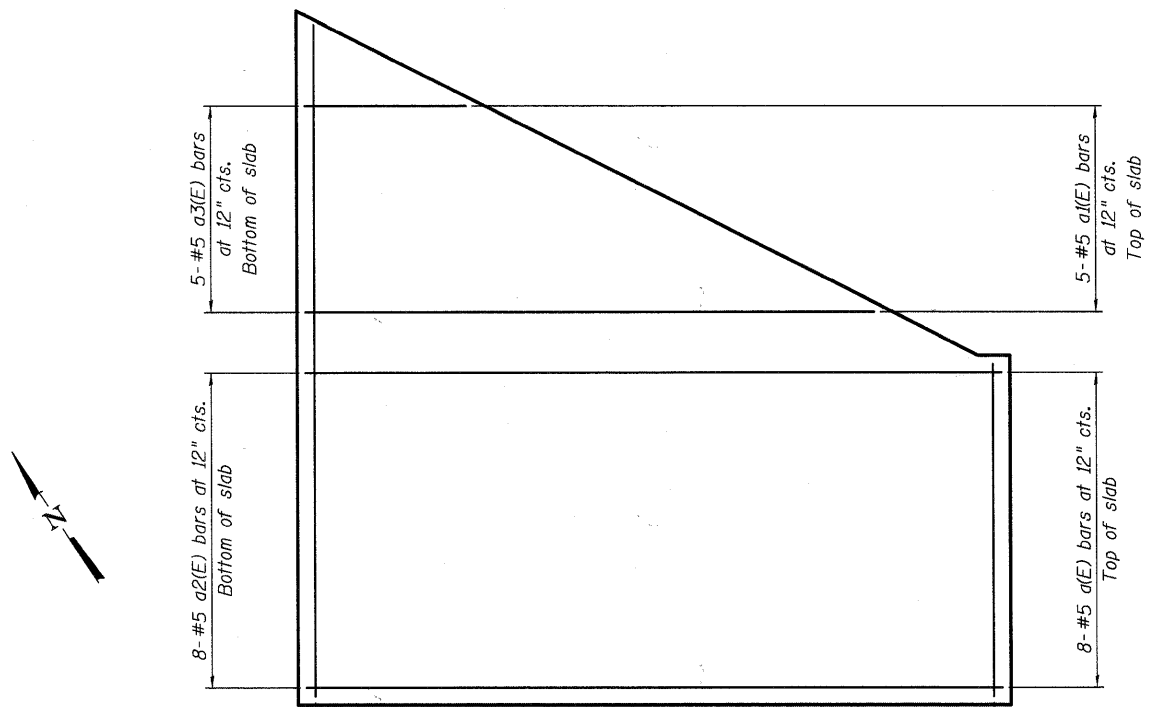
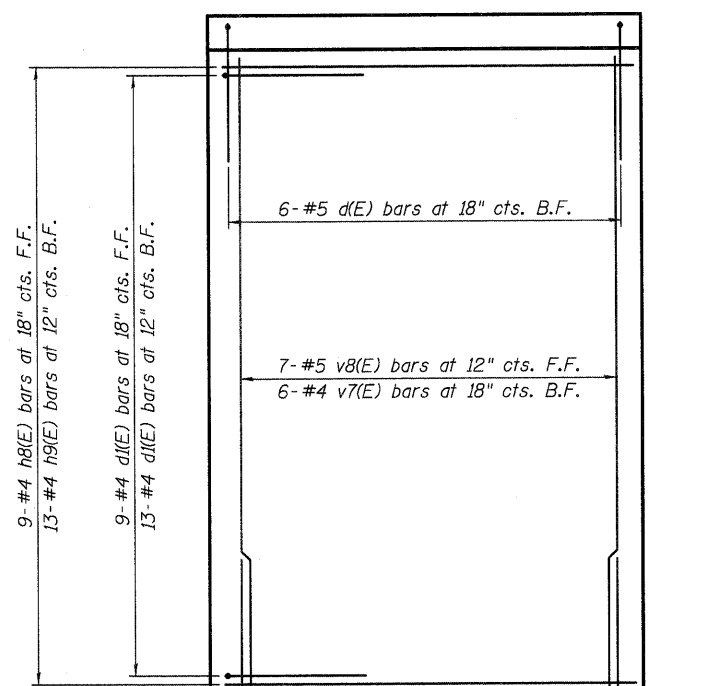


PLOT DATE = 12/28/2008
 FILE NAME = P:\CBBEL - WEST - Projects\2009\123148 - P\HIT\Structural\Drawings\Rein\123148-04-Rev1.dgn

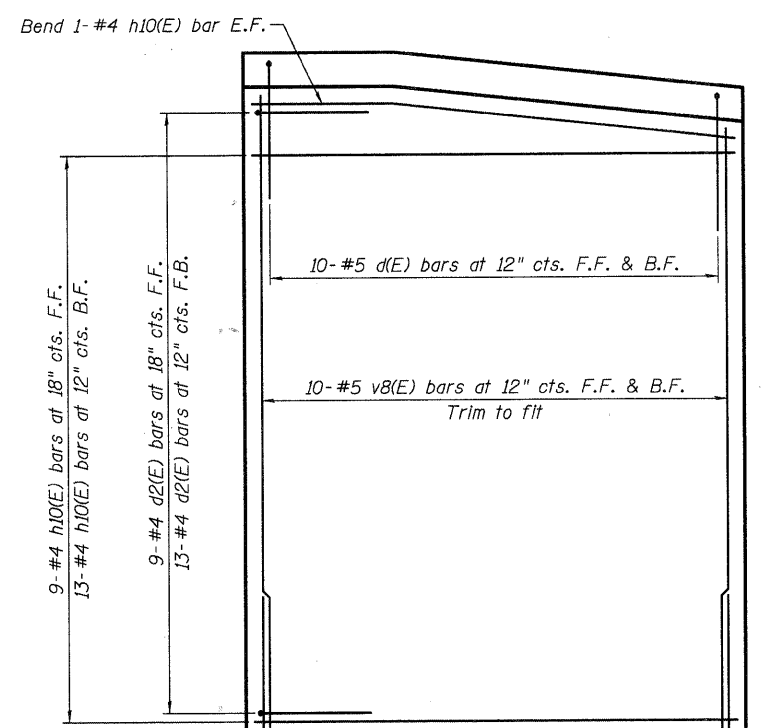


15-#5 b(E) bars at 12" cts. - Top of slab
 12-#5 b1(E) bars at 15" cts. - Bottom of slab

DECK SLAB REINFORCEMENT

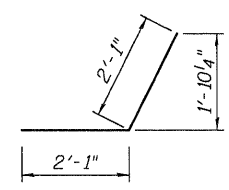


ELEVATION - WALL C
(Looking North)

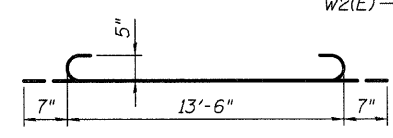


ELEVATION - WALL D
(Looking East)

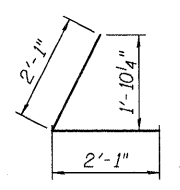
F.F. refers to front face
 B.F. refers to back face
 E.F. refers to each face



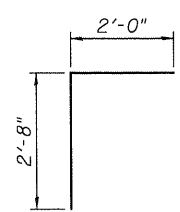
BAR d2(E)



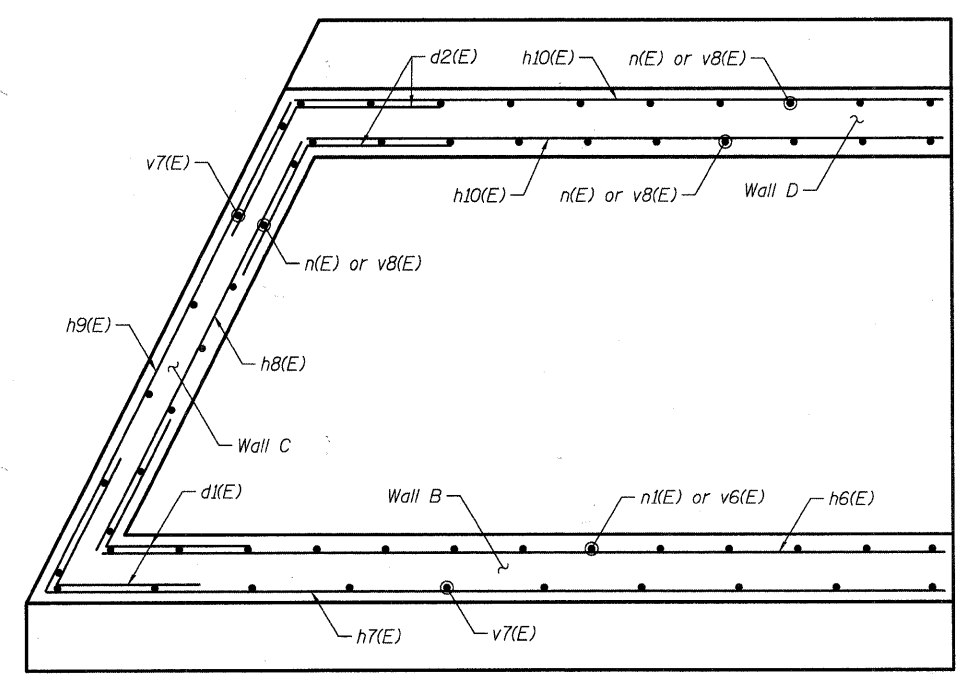
BAR a2(E)



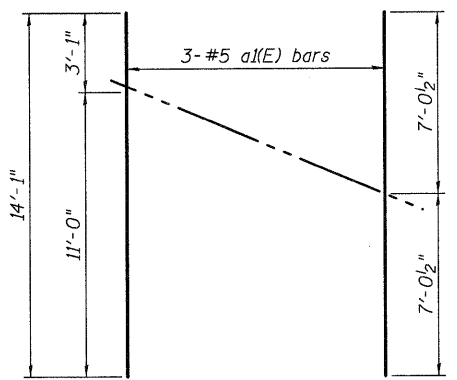
BAR d1(E)



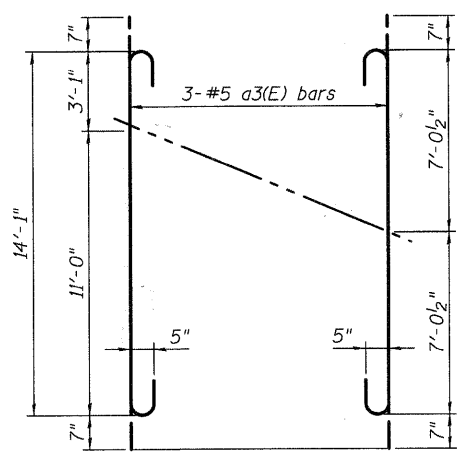
BAR d(E)



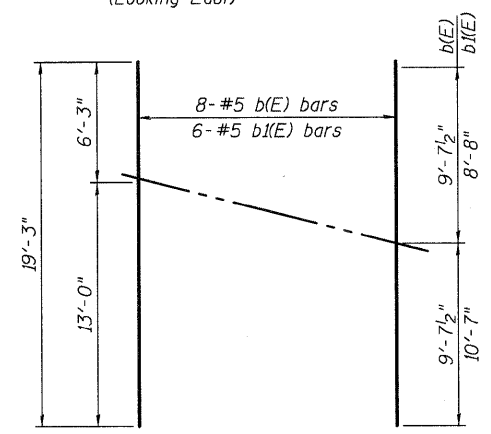
WALL REINFORCEMENT
WALLS B, C & D



FIELD CUTTING DIAGRAM
Order bars full length. Cut as shown and use remainder of bars in top of slab



FIELD CUTTING DIAGRAM
Order bars full length. Cut as shown and use remainder of bars in bottom of slab



FIELD CUTTING DIAGRAM
Order bars full length. Cut as shown and use remainder of bars in top & bottom of slab

WALL DETAILS III
NORTH AVENUE RETAINING WALLS

DESIGNED	-	DLS
CHECKED	-	AEU
DRAWN	-	AWH
CHECKED	-	DLS

WILLS BURKE KELSEY ASSOCIATES LTD.
 116 West Main Street, Suite 201
 St. Charles, Illinois 60174
 (630) 443-7755

SHEET NO. 14 24 SHEETS	F.A.U RTE.	SECTION	COUNTY	TOTAL SHEETS	SHEET NO.
		05-F3000-06-BT	KANE	58	35
FED. ROAD DIST. NO.			ILLINOIS	FED. AID PROJECT	
			CONTRACT NO. 63517		