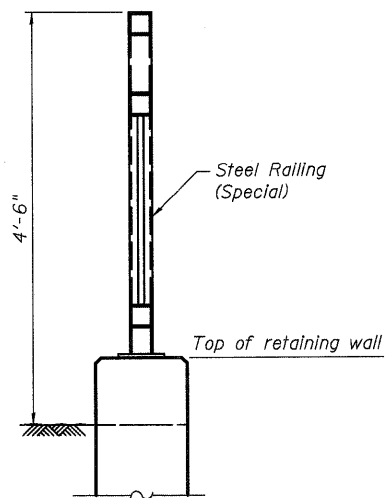
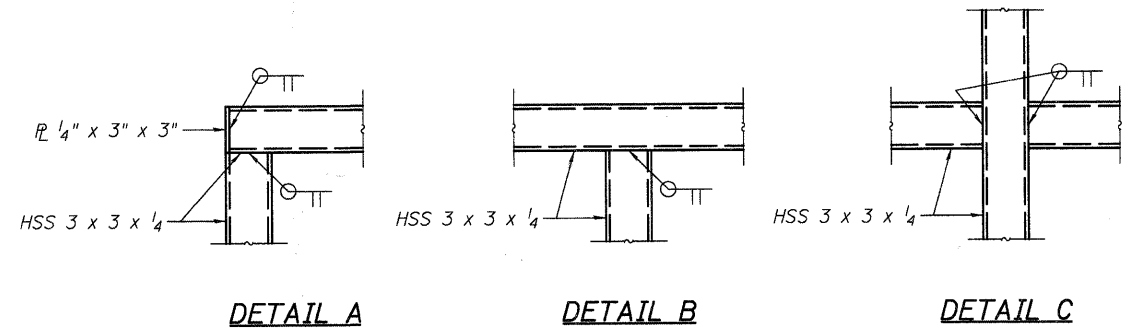


**ELEVATION  
STEEL RAILING (SPECIAL)**



**SECTION**



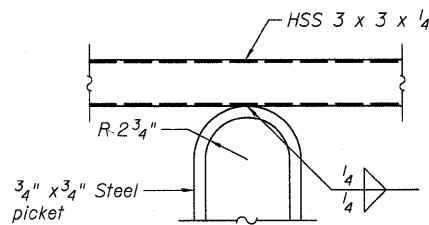
**DETAIL A**

**DETAIL B**

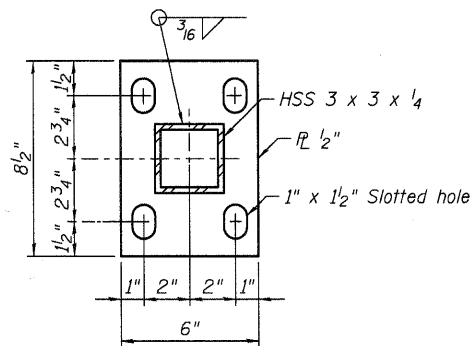
**DETAIL C**

**BILL OF MATERIAL**

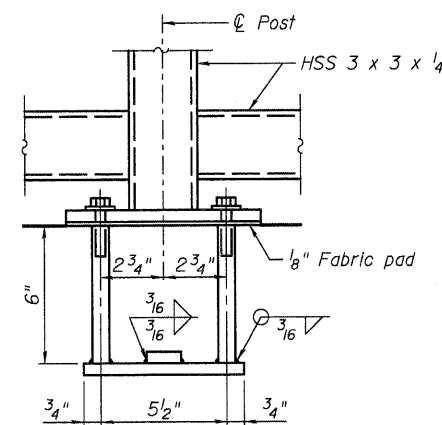
Item	Unit	Quantity
Steel Railing (Special)	Foot	21



**DETAIL D**

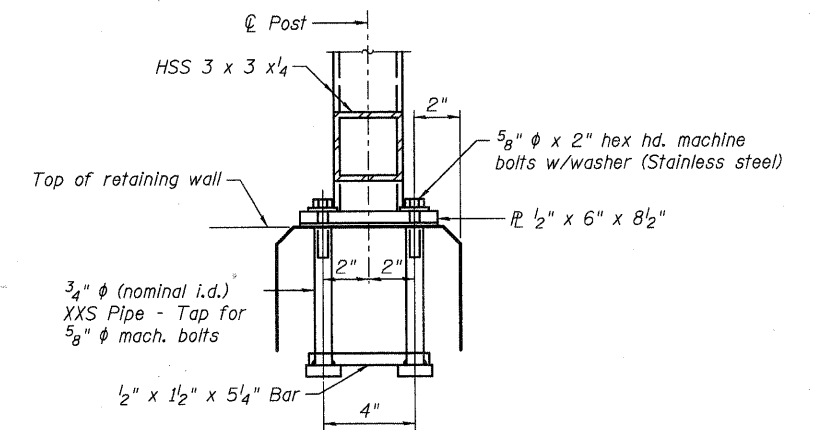


**BASE PL**



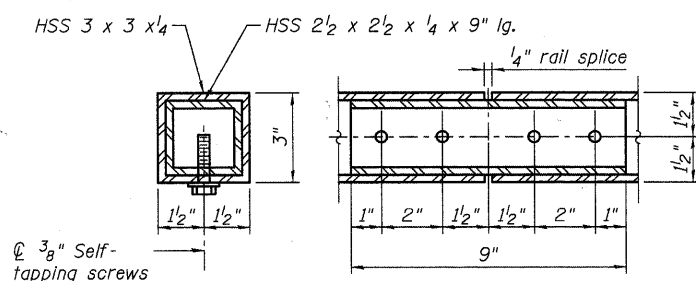
**ANCHOR BOLT DETAILS**

In lieu of the cast-in-place anchor device shown, the Contractor has the option of drilling and setting 5/8"  $\phi$  anchor rods according to Article 509.06 of the Standard Specifications. Embedment shall be according to the manufacturer's specifications.



**NOTES**

- All work shall conform to the special provision Steel Railing (Special).
- All post, railing, splices, anchor devices, and bent plates shall be painted using one coat of zinc-rich primer and two coats of a black powder-coated finish.
- Reinforcement shall be spaced to miss anchor rods.



**RAIL SPLICE**

**STEEL RAILING DETAILS  
NORTH AVENUE RETAINING WALLS**

DESIGNED -	DLS
CHECKED -	AEU
DRAWN -	AWH
CHECKED -	DLS

**WILLS BURKE KELSEY ASSOCIATES LTD.**  
116 West Main Street, Suite 201  
St. Charles, Illinois 60174  
(630) 443-7755

SHEET NO. 17	F.A.U. RTE.	SECTION	COUNTY	TOTAL SHEETS	SHEET NO.
24 SHEETS		05-F3000-06-BT	KANE	58	38
			CONTRACT NO. 63517		
FED. ROAD DIST. NO.		ILLINOIS FED. AID PROJECT			