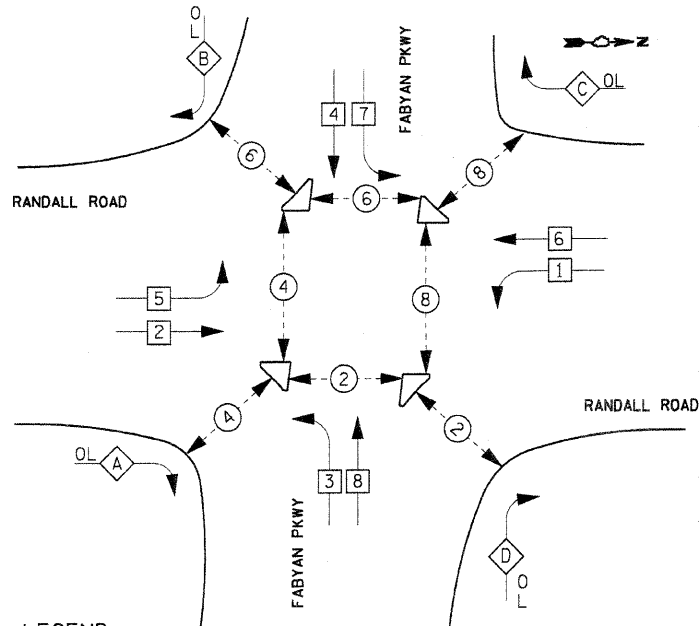


PROPOSED CONTROLLER SEQUENCE

SINGLE ENTRY - PROTECTED ONLY LEFT TURN PHASING (ALL APPROACHES)



LEGEND

- DUAL ENTRY PHASE
- SINGLE ENTRY PHASE
- ◇ OVERLAP
- PEDESTRIAN PHASE
- NUMBER REFERS TO ASSOCIATED PHASE

PHASE DESIGNATION DIAGRAM

OVERLAP LETTERS	PERMISSIVE PHASE	PROTECTED PHASE
A	= 2	+ 3
B	= 4	+ 5
C	= 6	+ 7
D	= 8	+ 1

NOTE: PLACE PHASES 2 AND 6 ON MINIMUM RE-CALL AND DISABLE THE "ANTI-BACKUP" ON PHASES 1 AND 5.

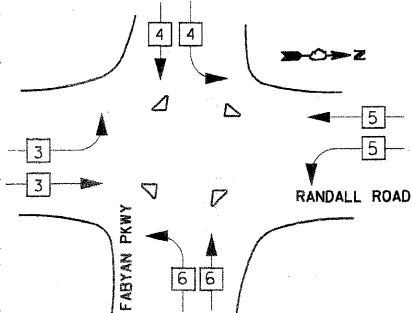
THE TRAFFIC SIGNAL CONTROL EQUIPMENT FOR THIS PROJECT SHALL BE "EAGLE EPAC M52 (IP ACCESSIBLE)".

K.C.D.O.T. TRAFFIC SIGNAL INSTALLATION ELECTRICAL SERVICE REQUIREMENTS				TOTAL WATTAGE
TYPE	NO. OF LAMPS	INCAND.	LED % OPERATION	
SIGNAL (RED)	22	17	0.50	187
(YELLOW)	22	25	0.25	137.5
(GREEN)	22	15	0.25	82.5
ARROW	22	12	0.10	72
PED. SIGNAL	60	25	1.00	400
CONTROLLER	16	100	1.00	100
ILLUM. SIGN	1		0.05	
FLASHER			0.50	
TOTAL =				979

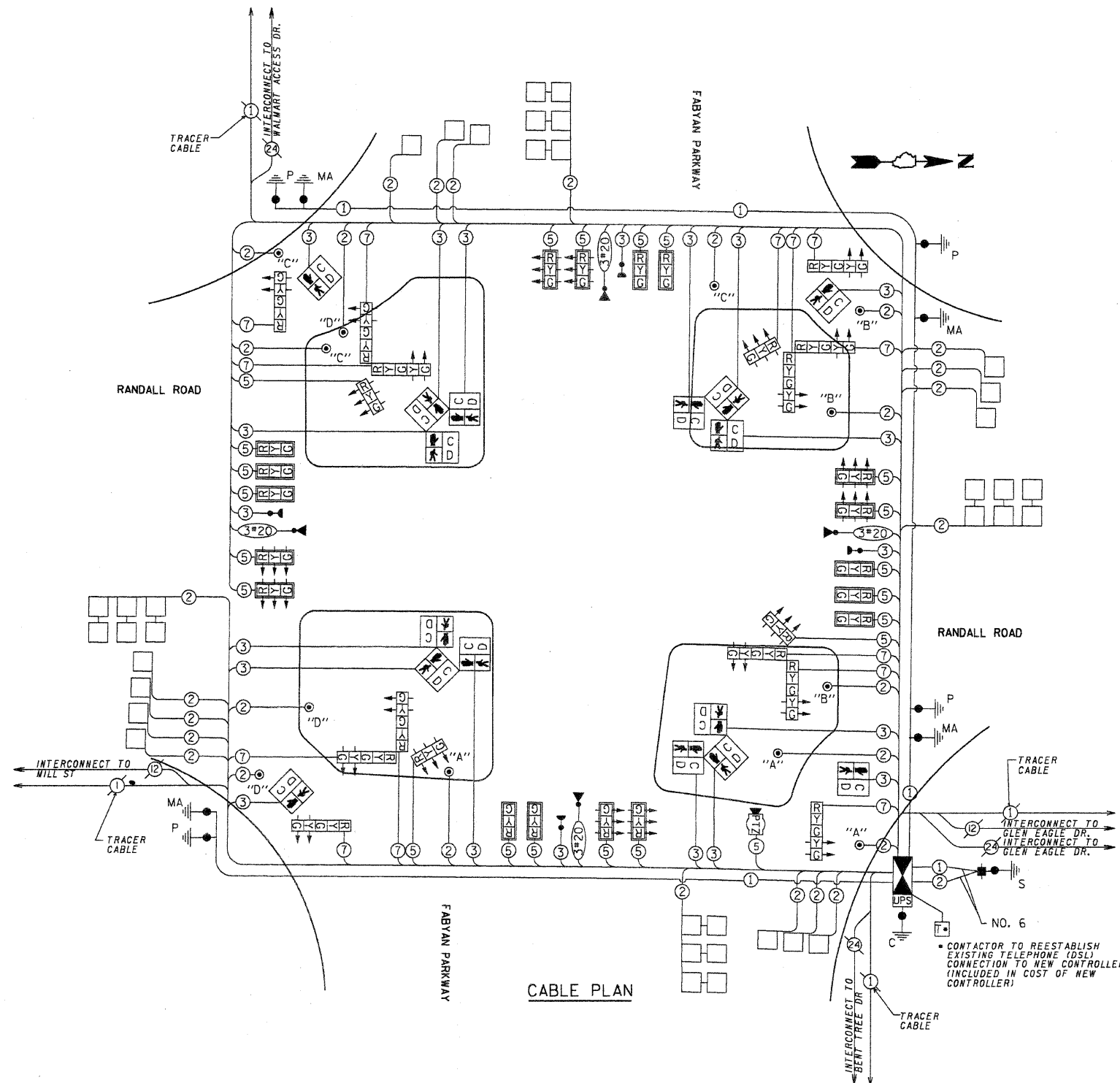
ENERGY COSTS- BILLED TO: CITY OF GENEVA
1800 SOUTH STREET
GENEVA, ILLINOIS 60134

ENERGY SUPPLY- CONTACT: JENNIFER HILKEMANN
PHONE: (630) 232-1503
COMPANY: CITY OF GENEVA

PROPOSED EMERGENCY VEHICLE SEQUENCE



PROPOSED EMERGENCY VEHICLE PREEMPTORS				
EMERGENCY VEHICLE PRE EMPTORS	3	4	5	6
MOVEMENT	→	↓	←	↑



- NOTES:**
- PUSH BUTTON "A" SHALL PLACE A CALL IN PHASE 2
 - PUSH BUTTON "B" SHALL PLACE A CALL IN PHASE 8
 - PUSH BUTTON "C" SHALL PLACE A CALL IN PHASE 6
 - PUSH BUTTON "D" SHALL PLACE A CALL IN PHASE 4

FILE NAME: I:\Projects\10228803\Drawings\10228803.dwg; USER: jh; DATE: 12/29/2010 10:10:10 AM



USER NAME = Matt Baldwin
DESIGNED - PWK
DRAWN - ERD
CHECKED - KDF
DATE - 12/29/2010

REVISIONS:
REVISED -
REVISED -
REVISED -

STATE OF ILLINOIS DEPARTMENT OF TRANSPORTATION

CABLE PLAN, PHASE DESIGNATION DIAGRAM AND SCHEDULE OF QUANTITIES

SCALE:	SHEET NO. OF SHEETS	STA. TO STA.
--------	---------------------	--------------

F.A.P. RTE.	SECTION	COUNTY	TOTAL SHEETS	SHEET NO.
336	01-00269-00-CH	KANE	124	72

CONTRACT NO. 63533
ILLINOIS FED. AID PROJECT