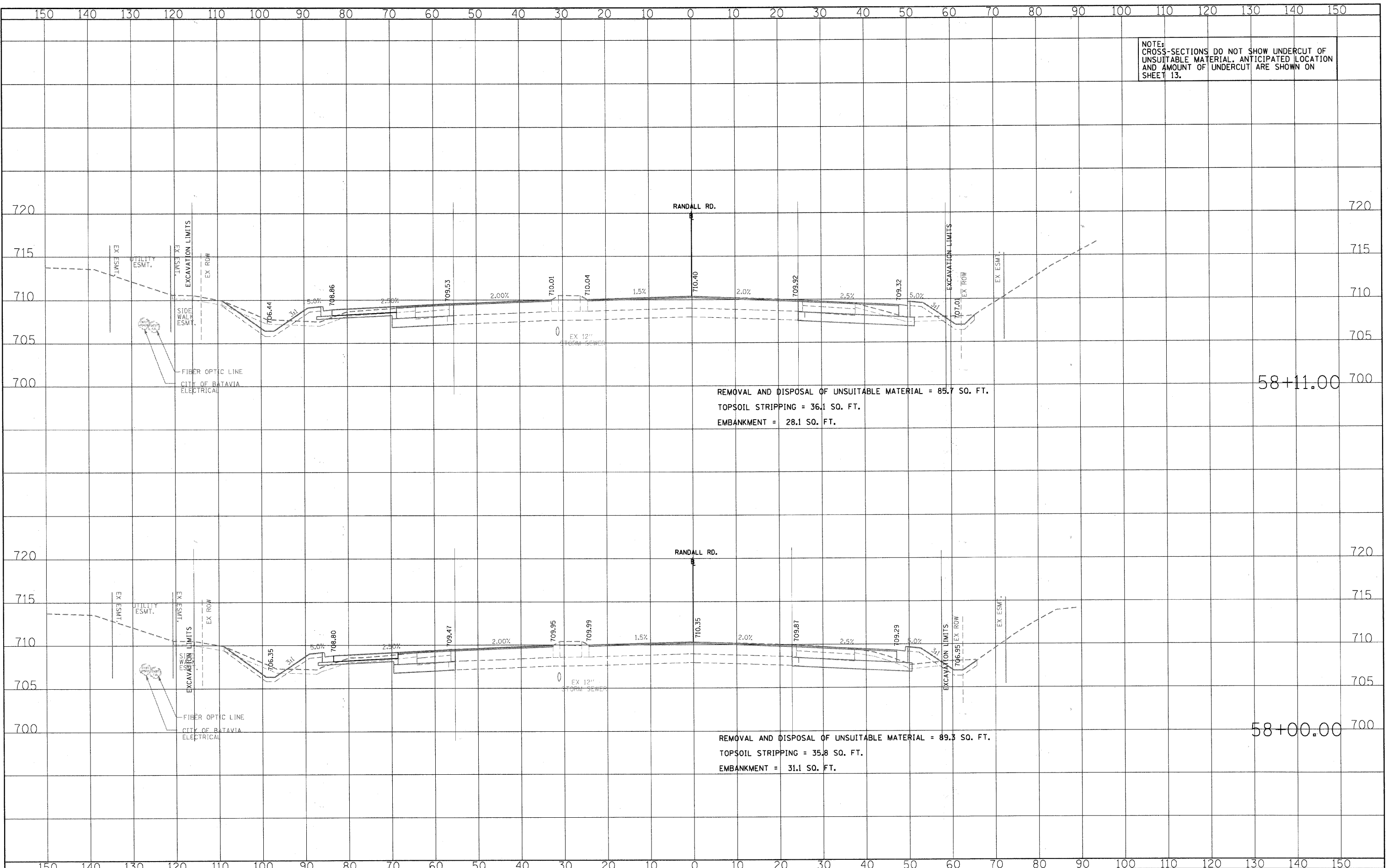


NOTE: CROSS-SECTIONS DO NOT SHOW UNDERCUT OF UNSUITABLE MATERIAL. ANTICIPATED LOCATION AND AMOUNT OF UNDERCUT ARE SHOWN ON SHEET 13.



REMOVAL AND DISPOSAL OF UNSUITABLE MATERIAL = 85.7 SQ. FT.
 TOPSOIL STRIPPING = 36.1 SQ. FT.
 EMBANKMENT = 28.1 SQ. FT.

58+11.00

REMOVAL AND DISPOSAL OF UNSUITABLE MATERIAL = 89.3 SQ. FT.
 TOPSOIL STRIPPING = 35.8 SQ. FT.
 EMBANKMENT = 31.1 SQ. FT.

58+00.00

DATE	
BY	
SURVEYED	
PLOTTED	
NOTE BOOK	
TEMPLATE	
AREAS CHECKED	
NO.	

DATE	
BY	
SURVEYED	
PLOTTED	
NOTE BOOK	
TEMPLATE	
AREAS CHECKED	
NO.	

FILE NAME = L:\KANECD\012\29\Drawn\CAD\Drawings\Sheet\58+00\58+00.dwg
 SHEET 94 OF 124



USER NAME = Matt Baldwin	DESIGNED - PWK	REVISED -
PLLOT SCALE = 10.0000' / IN.	DRAWN - ERD	REVISED -
PLLOT DATE = 12/29/2018	CHECKED - KDF	REVISED -
	DATE	REVISED -

STATE OF ILLINOIS
DEPARTMENT OF TRANSPORTATION

RANDALL ROAD CROSS-SECTIONS
 SCALE: 1" = 10'
 SHEET NO. OF SHEETS STA. 58+00.00 TO STA. 58+11.00

F.A.P. RTE.	SECTION	COUNTY	TOTAL SHEETS	SHEET NO.
336	01-00269-00-CH	KANE	124	94
FED. ROAD DIST. NO.			ILLINOIS FED. AID PROJECT	
			CONTRACT NO. 63533	