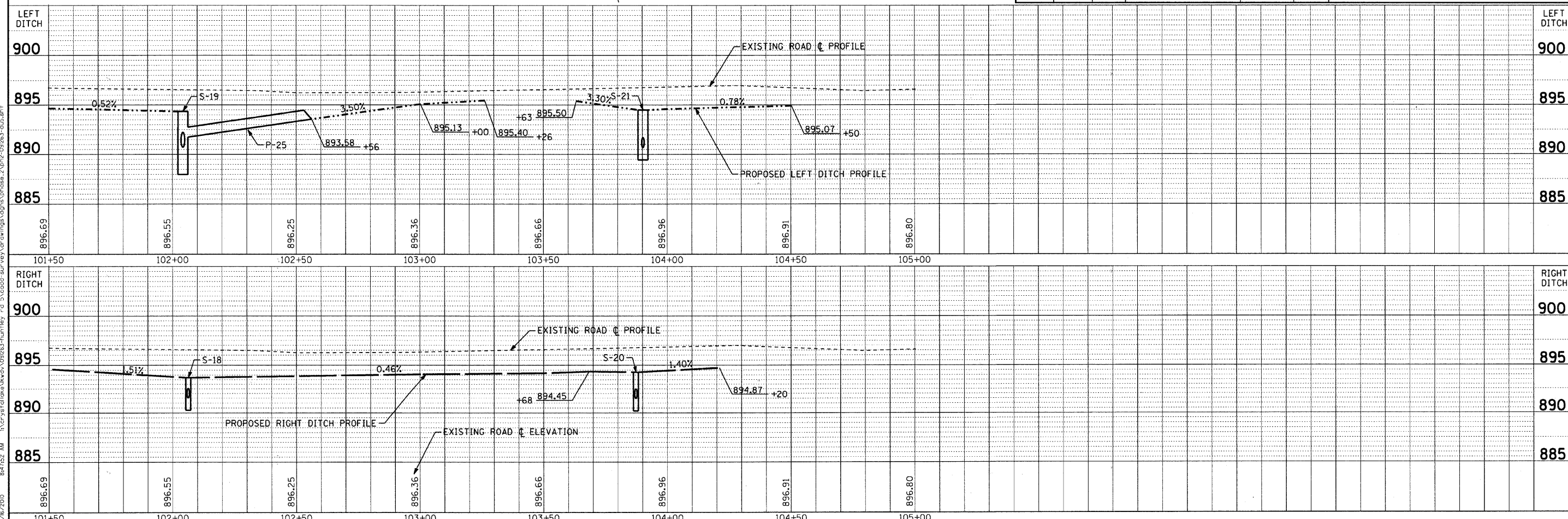


STORM PIPES					
NO.	TYPE	LENGTH (LF)	DIA (IN)	SLOPE	TBF (CY)
P-25	SS, CL A, TYPE 1	46	12	3.56%	3.6
P-26	SS, CL A, TYPE 1	8	12	1.00%	0.0
P-27	SS, CL A, TYPE 1	7	12	0.57%	0.0
P-28	SS, CL A, TYPE 1	8	12	2.00%	0.0
P-29	SS, CL A, TYPE 1	6	12	2.00%	0.0

STORM STRUCTURES						
NO.	STATION	OFFSET	TYPE	FRAME	RIM/EP	INVERTS
S-18	102+06	25.5' RT	CATCH BASIN, TYPE C	TY 1 FR, OLID	893.70	891.52 12" W
S-19	102+04	26.5' LT	CATCH BASIN, TYPE C	TY 1 FR, OLID	894.30	891.73 12" N, 890.71 12" E
S-20	103+87	25.5' RT	CATCH BASIN, TYPE C	TY 1 FR, OLID	894.40	891.59 12" W
S-21	103+90	25.5' LT	CATCH BASIN, TYPE C	TY 1 FR, OLID	894.60	890.82 12" E
FES-16	102+56	26.2' LT	PRC FLARED END SECTION	--	--	893.58 12" S



COPYRIGHT © 2005 BY BAXTER & WOODMAN, INC.  
 STATE OF ILLINOIS - PROFESSIONAL DESIGN FIRM  
 LICENSE NO. 084-00027 - EXPRES 4/30/2011  
 2/16/2010  
 \\s:\projects\091263\pen\td\091263-du5.dwg  
 2/16/2010 10:08:23 AM  
 2/16/2010 10:08:23 AM  
 2/16/2010 10:08:23 AM

	DESIGNED - DSH DRAWN - MAC CHECKED - JJF DATE - 12/16/10	REVISED - 12/16/10 PER IDOT REVISED - REVISED - FILE - ph2-091263-du5.sht	<b>VILLAGE OF LAKEWOOD, ILLINOIS</b> <b>HUNTLEY ROAD</b> <b>BICYCLE TRAIL</b>	<b>DRAINAGE &amp; UTILITY</b> <b>HUNTLEY ROAD</b>	SCALE: H: 1"=20' V: 1"=5' STA. 101+50 TO STA. 105+00	<table border="1" style="font-size: small;"> <tr> <th>F.A. RTE.</th> <th>SECTION</th> <th>COUNTY</th> <th>TOTAL SHEETS</th> <th>SHEET NO.</th> </tr> <tr> <td>0118</td> <td>10-00011-00-BT</td> <td>MCHENRY</td> <td>35</td> <td>19</td> </tr> <tr> <td colspan="3">FED. ROAD DIST. NO. 1 ILLINOIS</td> <td colspan="2">CONTRACT NO. 63545</td> </tr> <tr> <td colspan="3">FED. AID PROJECT CMM-9003(628)</td> <td colspan="2"></td> </tr> </table>	F.A. RTE.	SECTION	COUNTY	TOTAL SHEETS	SHEET NO.	0118	10-00011-00-BT	MCHENRY	35	19	FED. ROAD DIST. NO. 1 ILLINOIS			CONTRACT NO. 63545		FED. AID PROJECT CMM-9003(628)				
F.A. RTE.	SECTION	COUNTY	TOTAL SHEETS	SHEET NO.																						
0118	10-00011-00-BT	MCHENRY	35	19																						
FED. ROAD DIST. NO. 1 ILLINOIS			CONTRACT NO. 63545																							
FED. AID PROJECT CMM-9003(628)																										