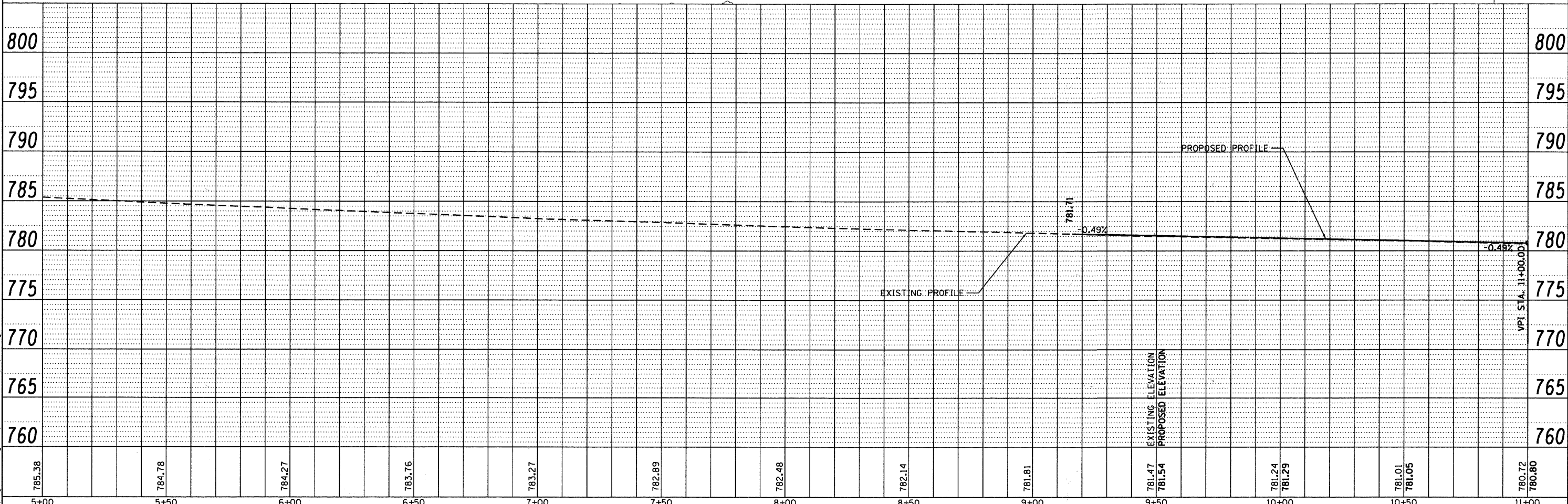


LEGEND

	POLYMERIZED HOT-MIX ASPHALT SURFACE COURSE, MIX "F", N90, 1 3/4"
	POLYMERIZED HOT-MIX ASPHALT BINDER COURSE, IL-19.0, N90, 2 1/4"
	HOT-MIX ASPHALT BASE COURSE WIDENING, 9"
	HOT-MIX ASPHALT SURFACE COURSE, MIX "D", N50, 1 1/2"
	HOT-MIX ASPHALT BINDER COURSE, IL-19.0, N50, 2 1/4"
	HOT-MIX ASPHALT BASE COURSE WIDENING, 7"
	HOT-MIX ASPHALT SURFACE REMOVAL - BUTT JOINT



PLAN

DATE	
BY	
DESIGNED	
DRAWN	
CHECKED	
NOTED	
PLotted	
FILE NAME	

PROFILE

DATE	
BY	
DESIGNED	
DRAWN	
CHECKED	
NOTED	
PLotted	
FILE NAME	

FILE NAME = m:\proj\3383\design\Proposed Plan\3383.dwg

Ciorba Group, Inc.
 CONSULTING ENGINEERS
 5507 North Cumberland Avenue, Suite 402
 Chicago, Illinois 60656
 Tel. 773.775.4008 Fax 773.775.4014

USER NAME = espina	DESIGNED - CLG	REVISED -
PLOT SCALE = 20.0000' / IN.	DRAWN - EPS	REVISED -
PLOT DATE = 12/20/2010	CHECKED - MJL	REVISED -
	DATE - 12-20-2010	REVISED -

KANE COUNTY DIVISION OF TRANSPORTATION

PROPOSED PLAN AND PROFILE

SCALE: 1" = 20'	SHEET NO. OF SHEETS	STA. TO STA.
-----------------	---------------------	--------------

F.A.P. RTE. 336	SECTION 04-00325-00-TL	COUNTY KANE	TOTAL SHEETS 54	SHEET NO. 12
CONTRACT NO. 63547				
FED. ROAD DIST. NO. 1 ILLINOIS FED. AID PROJECT				