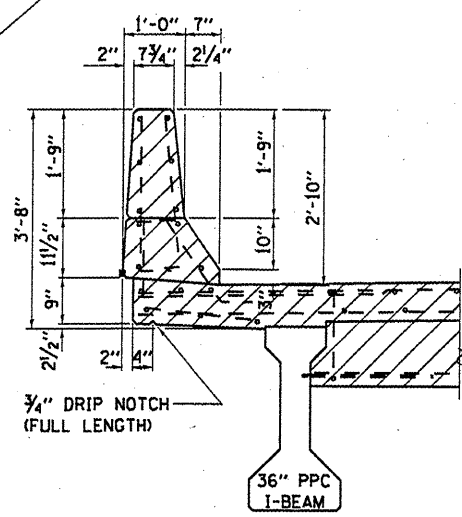
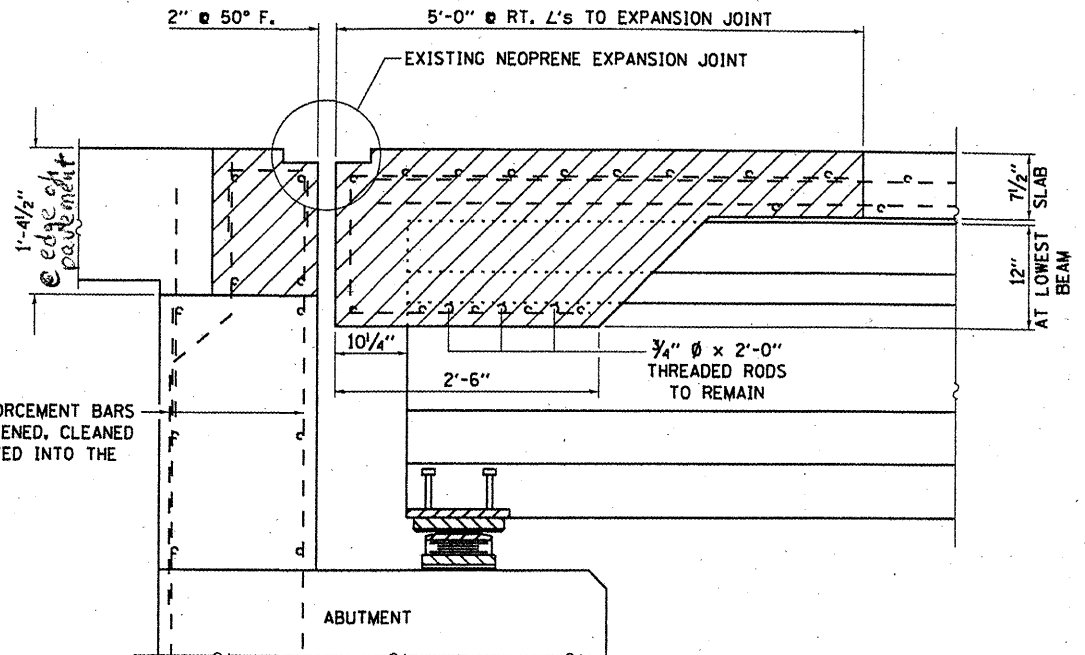


PARTIAL PLAN
N. ABUT. SHOWN
S. ABUT. SIMILAR

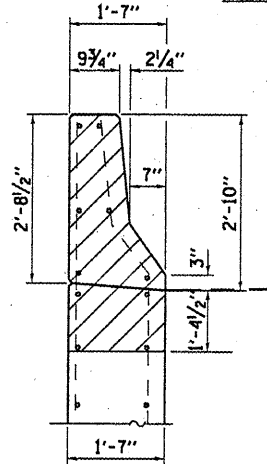
MIN. BAR LAP
#4 - 1'-9"
#5 - 2'-2"
#8 - 4'-6"



SECTION AT PARAPET



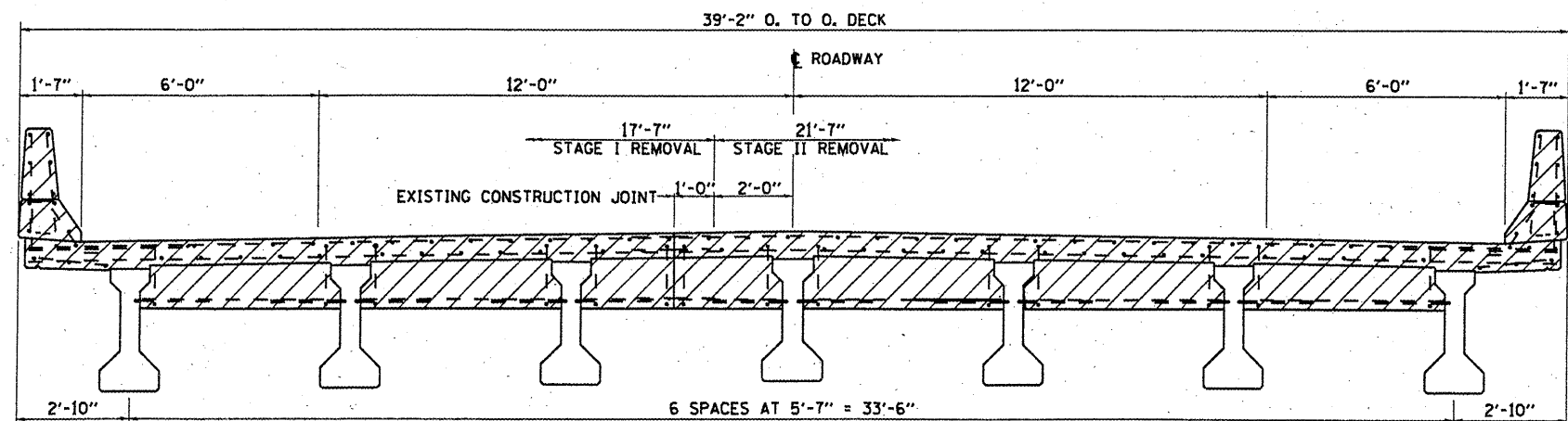
ABUTMENT SECTION



SECTION AT WINGWALL

NOTES

- * HATCHED AREA REPRESENTS CONCRETE REMOVAL LIMITS
- EXISTING 3/4" Ø x 2'-0" THREADED RODS SHALL BE CLEANED AND INCORPORATED INTO THE NEW CONCRETE.
- COST FOR REINFORCEMENT REMOVAL AND EXPANSION JOINT REMOVAL SHALL BE INCLUDED IN THE COST OF "CONCRETE REMOVAL".
- * CONTRACTOR MUST EXERCISE EXTREME CARE DURING CONCRETE REMOVAL SO AS NOT TO DAMAGE THE PPC I BEAMS. ANY DAMAGE TO THE BEAMS IS TO BE REPAIRED AT THE CONTRACTOR'S EXPENSE.



CROSS SECTION AT ABUTMENTS
LOOKING SOUTH
N. ABUTMENT SHOWN - S. ABUTMENT SIMILAR

TOTAL BILL OF MATERIAL

ITEM	UNIT	QUANTITY
CONCRETE REMOVAL	CU YD	39

FILE NAME =	USER NAME = woodshankr1	DESIGNED - RON WOODSHANK	REVISED -
ai:\pwr\work\pwr\idot\woodshankr1\ad8143185\CH	MAIN1-D366A28-detailed.dgn	DRAWN - RON WOODSHANK	REVISED -
	PLOT SCALE = 100.0000' / IN.	CHECKED -	REVISED -
	PLOT DATE = Dec 21, 2010 - 11:03:32 AM	DATE -	REVISED -

STATE OF ILLINOIS
DEPARTMENT OF TRANSPORTATION

EXISTING STRUCTURE DETAILS

SCALE: SHEET NO. 2 OF 7 SHEETS STA. TO STA.

F.A.P. RTE. 332	SECTION (I-X-BI)-1	COUNTY IROQUOIS	TOTAL SHEETS 14	SHEET NO. 9
CONTRACT NO. 66A28			ILLINOIS FED. AID PROJECT	