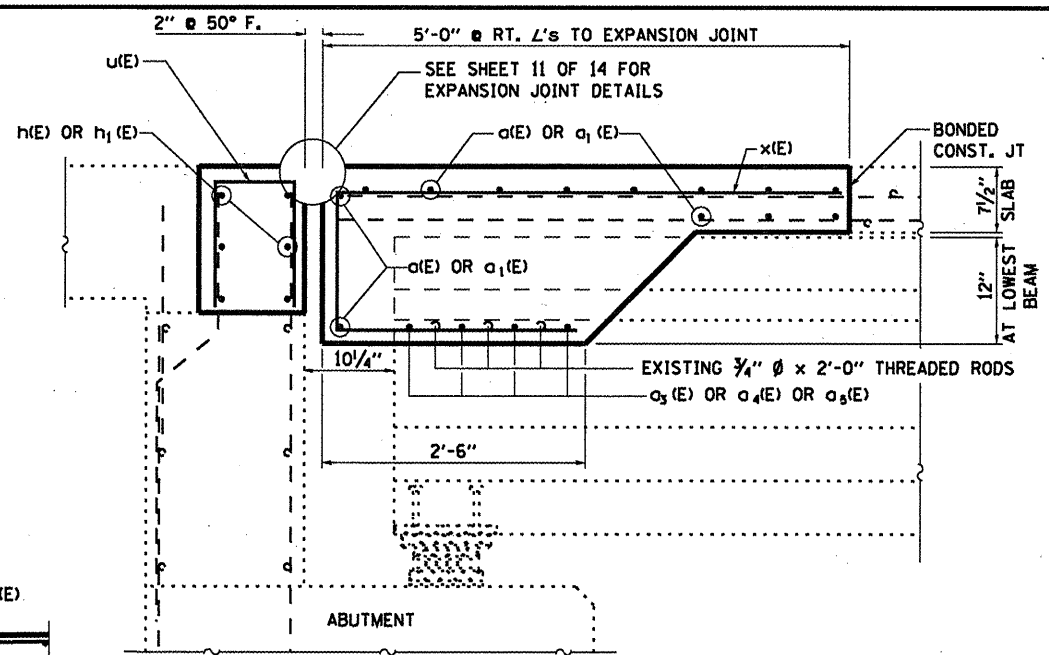
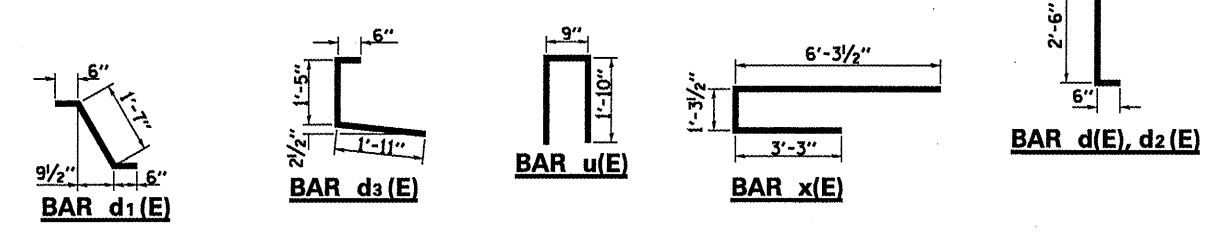


**PARTIAL PLAN**  
N. ABUT. SHOWN - S. ABUT. SIMILAR

7-#5 d(E) @ 11" CTS. INSIDE FACE  
 7-#5 d1(E) @ 11" CTS. INSIDE FACE  
 7-#4 d2(E) @ 12" CTS. OUTSIDE FACE  
 7-#4 d3(E) @ 12" CTS. OUTSIDE FACE

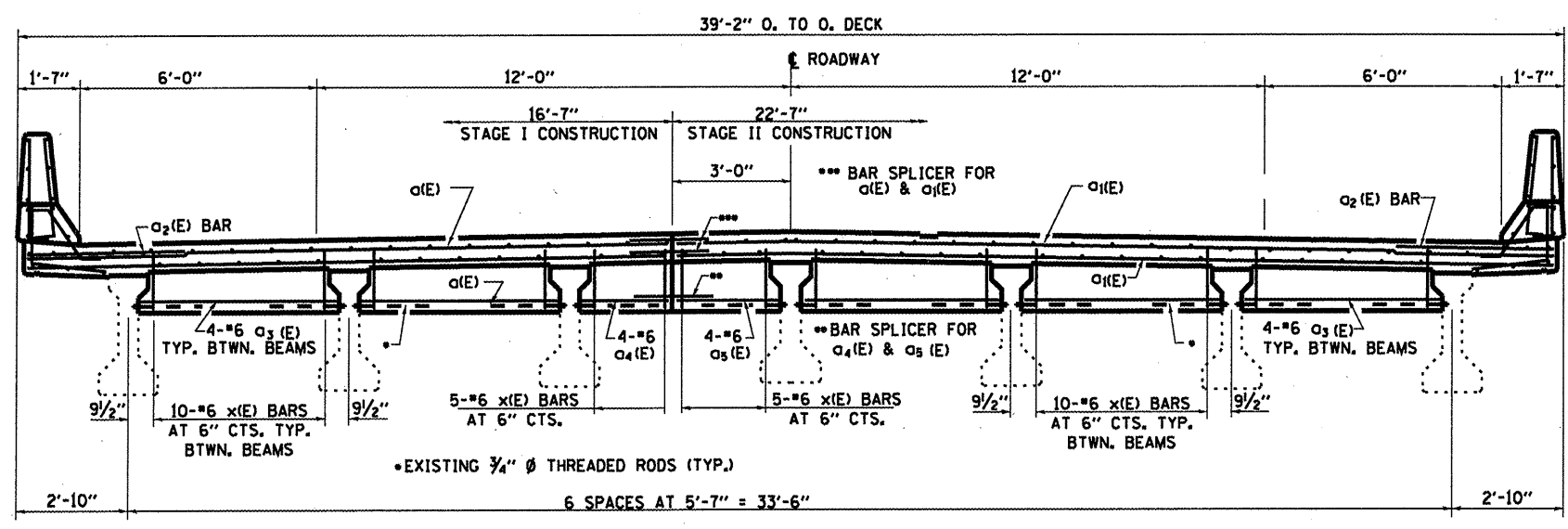
9-#5 d(E) @ 11" CTS. INSIDE FACE  
 9-#5 d1(E) @ 11" CTS. INSIDE FACE  
 9-#4 d2(E) @ 12" CTS. OUTSIDE FACE  
 9-#4 d3(E) @ 12" CTS. OUTSIDE FACE



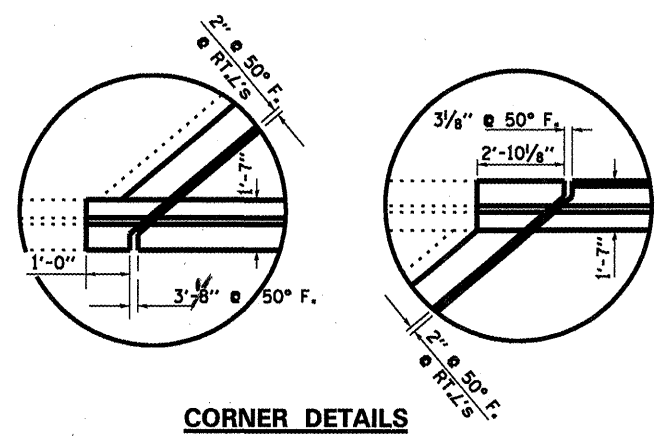
**ABUTMENT SECTION**

**SECTION AT PARAPET**

**SECTION AT WINGWALL**



**CROSS SECTION AT ABUTMENTS**  
LOOKING SOUTH  
N. ABUTMENT SHOWN - S. ABUTMENT SIMILAR



**CORNER DETAILS**

**BILL OF MATERIAL**

Bar	No.	Size	Length	Shape
a(E)	26	#7	24'-1"	—
a1(E)	26	#7	33'-5"	—
a2(E)	20	#6	6'-3"	—
a3(E)	40	#6	7'-6"	—
a4(E)	8	#6	2'-10"	—
a5(E)	8	#6	3'-6"	—
d(E)	32	#5	3'-0"	—
d1(E)	32	#5	2'-7"	—
d2(E)	32	#4	3'-0"	—
d3(E)	32	#4	3'-10"	—
h(E)	12	#6	25'-4"	—
h1(E)	12	#6	33'-2"	—
u(E)	110	#5	4'-5"	—
x(E)	120	#6	10'-10"	—
Reinforcement Bars, Epoxy Coated				Pound 7880
Concrete Superstructure				Cu. Yds. 39