

F.A.I. RTE.	SECTION	COUNTY	TOTAL SHEETS	SHEET NO.
39	[(50-4B)BR]I	LASALLE	12	1
FED. ROAD DIST. NO.		ILLINOIS	CONTRACT NO. 66A34	

STATE OF ILLINOIS
DEPARTMENT OF TRANSPORTATION
DIVISION OF HIGHWAYS
**PROPOSED
HIGHWAY PLANS**

FAI ROUTE 39 (I-39)
SECTION [(50-4B)BR]I

**INSTALLATION OF HANGER TIE ASSEMBLIES FOR THE
ARCH SPAN OF THE ABARAHAM LINCOLN MEMORIAL BRIDGE
LASALLE COUNTY**

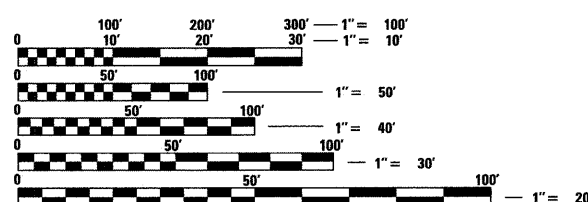
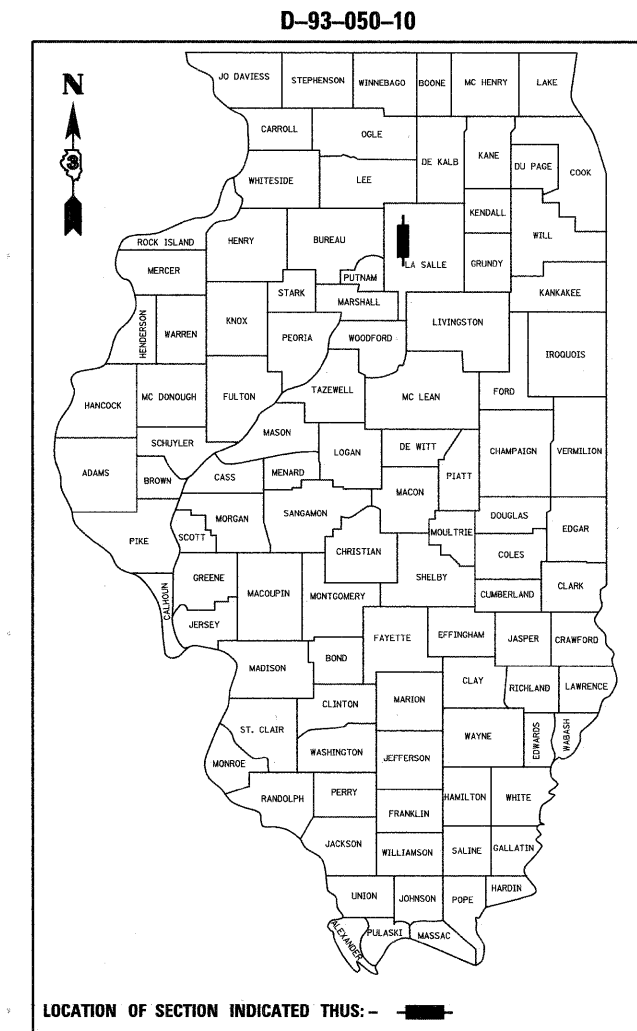
C-93-119-10

INDEX OF SHEETS

- 1 COVER SHEET
- 2 COMMITMENTS, GENERAL NOTES & SUMMARY OF QUANTITIES
- 3 STANDARD 701402 (SPECIAL) - STAGE I
- 4 STANDARD 701402 (SPECIAL) - STAGE II
- 5 STANDARD 701400 (SPECIAL)
- 6 LANE CLOSURE CROSS SECTIONS
- 7 HANGER TIE ASSEMBLY LAYOUT
- 8 HANGER TIE ASSEMBLY DETAILS
- 9 EXISTING TIED ARCH GENERAL PLAN AND ELEVATION
- 10 EXISTING TIED ARCH GENERAL NOTES
- 11 EXISTING TIED ARCH GEOMETRY
- 12 EXISTING TIED ARCH HANGER DETAILS

HIGHWAY STANDARDS

- 701901-01 TRAFFIC CONTROL DEVICES
- 704001-06 TEMPORARY CONCRETE BARRIER



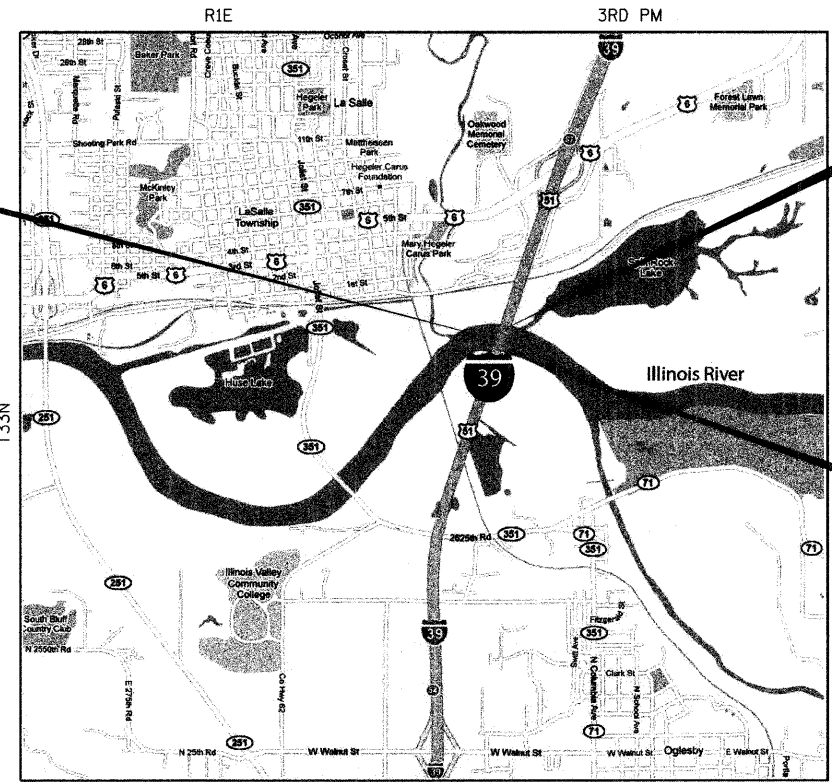
FULL SIZE PLANS HAVE BEEN PREPARED USING STANDARD ENGINEERING SCALES. REDUCED SIZED PLANS WILL NOT CONFORM TO STANDARD SCALES. IN MAKING MEASUREMENTS ON REDUCED PLANS, THE ABOVE SCALES MAY BE USED.

J.U.L.I.E.
JOINT UTILITY LOCATION INFORMATION FOR EXCAVATION
1-800-892-0123
OR 811

DISTRICT 3 NO. (815) 434-6131
PROJECT ENGINEER: JOE KANNEL
UNIT CHIEF: MICHELE LINDEMANN
TOWNSHIP: LASALLE

CONTRACT NO. 66A34

ABRAHAM LINCOLN MEMORIAL BRIDGE
OVER THE ILLINOIS RIVER
STA. 863+16.00
S.N. 050-0191 (NB & SB)

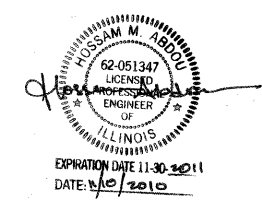


LOCATION MAP
NOT TO SCALE

GROSS LENGTH = 620.50 FT. = 0.118 MI.
NET LENGTH = 620.50 FT. = 0.118 MI.

END IMPROVEMENT
STA. 866+26.25

BEGIN IMPROVEMENT
STA. 860+05.75



FUNCTIONAL CLASSIFICATION

INTERSTATE
F.A.P. ROUTE 39 (I-39)
2009 ADT = 19,700
P.V. = 71.0% S.U. = 3.6% M.U. = 25.4%

STATE OF ILLINOIS
DEPARTMENT OF TRANSPORTATION
DIVISION OF HIGHWAYS

SUBMITTED December 7, 2010
Henry Ryman
DEPUTY DIRECTOR OF HIGHWAYS, REGION ENGINEER

February 4 2011
Scott E. Sitt, P.E.
acting ENGINEER OF DESIGN AND ENVIRONMENT

February 4 2011
Christine M. Reed
DIRECTOR OF HIGHWAYS, CHIEF ENGINEER

**PRINTED BY THE AUTHORITY
OF THE STATE OF ILLINOIS**

