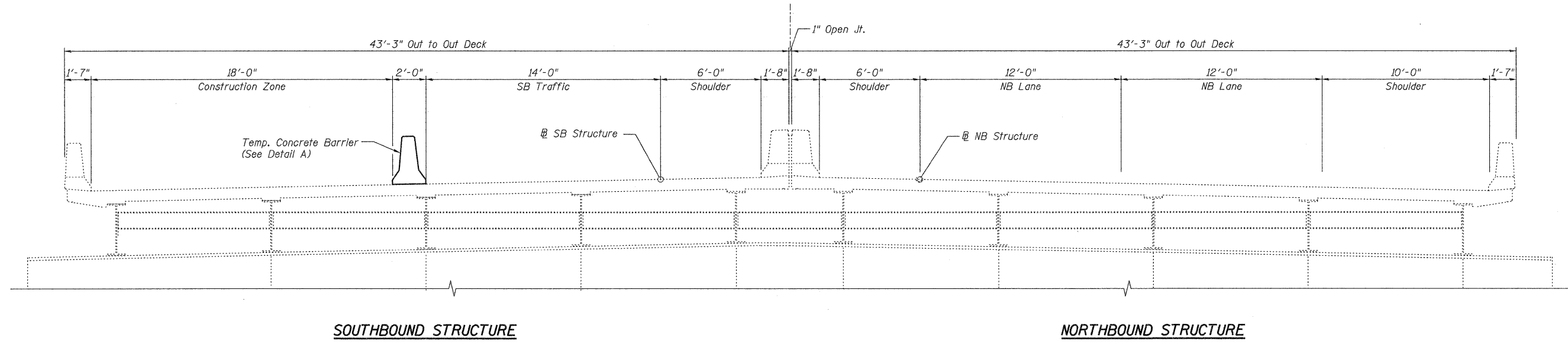
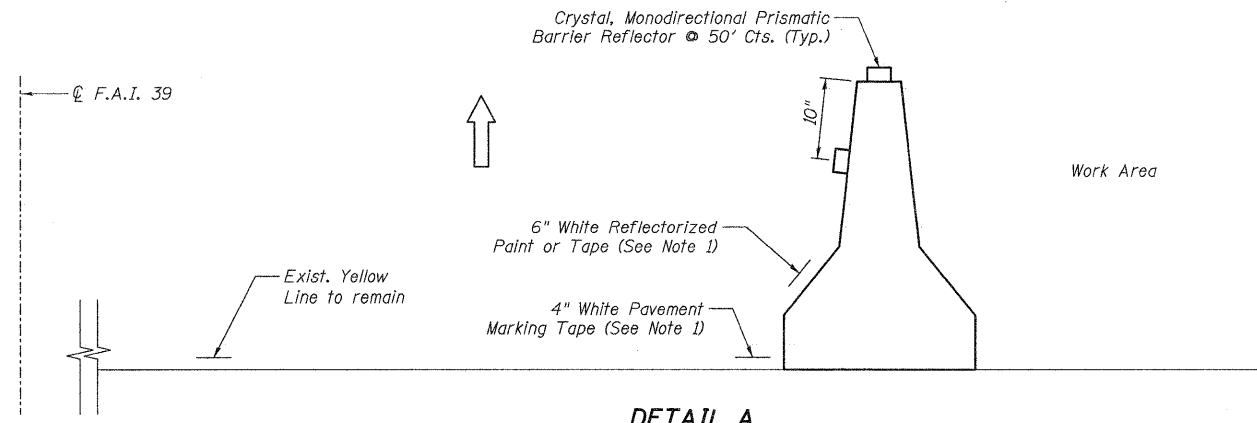


STAGE I SECTION A-A
(Looking upstation)



STAGE II SECTION B-B
(Looking upstation)



DETAIL A
(Stage I Shown - Stage II Opposite Hand)

NOTES:

1. The Contractor has the option of using either the line on the Temporary Concrete Barrier or on the Pavement.
2. The cost of the Reflectors and the Pavement/Barrier Marking Line is included in the cost of the Temporary Concrete Barrier. Removal of the Pavement/Barrier Marking Line shall be paid for as Work Zone Pavement Marking Removal and the quantity is based on 4" tape.
3. Temporary Concrete Barrier shall be according to Standard 704001.
4. Work this Sheet with Sheets 3-5.

benesch
engineers · scientists · planners
Alfred Benesch & Company
205 North Michigan Avenue, Suite 2400
Chicago, Illinois 60601
312-565-0450 Job No. 3938.05

FILE NAME =	USER NAME = rgram	DESIGNED - HMA	REVISED -	STATE OF ILLINOIS DEPARTMENT OF TRANSPORTATION	LANE CLOSURE CROSS SECTIONS			F.A.I. RTE.	SECTION	COUNTY	TOTAL SHEETS	SHEET NO.
#FILE#		DRAWN - VH	REVISED -					39	[(50-4B)BRJ]	LASALLE	12	6
PLOT SCALE =		CHECKED - HMA	REVISED -		SCALE: NONE SHEET NO. 1 OF 1 SHEETS STA. TO STA.			CONTRACT NO. 66A34				
PLOT DATE = 11/10/2010		DATE - 11/10/2010	REVISED -		FED. ROAD DIST. NO. [ILLINOIS] FED. AID PROJECT							

... \plans\366A34-sht-staging4.dgn
 15:16:38
 11/10/2010