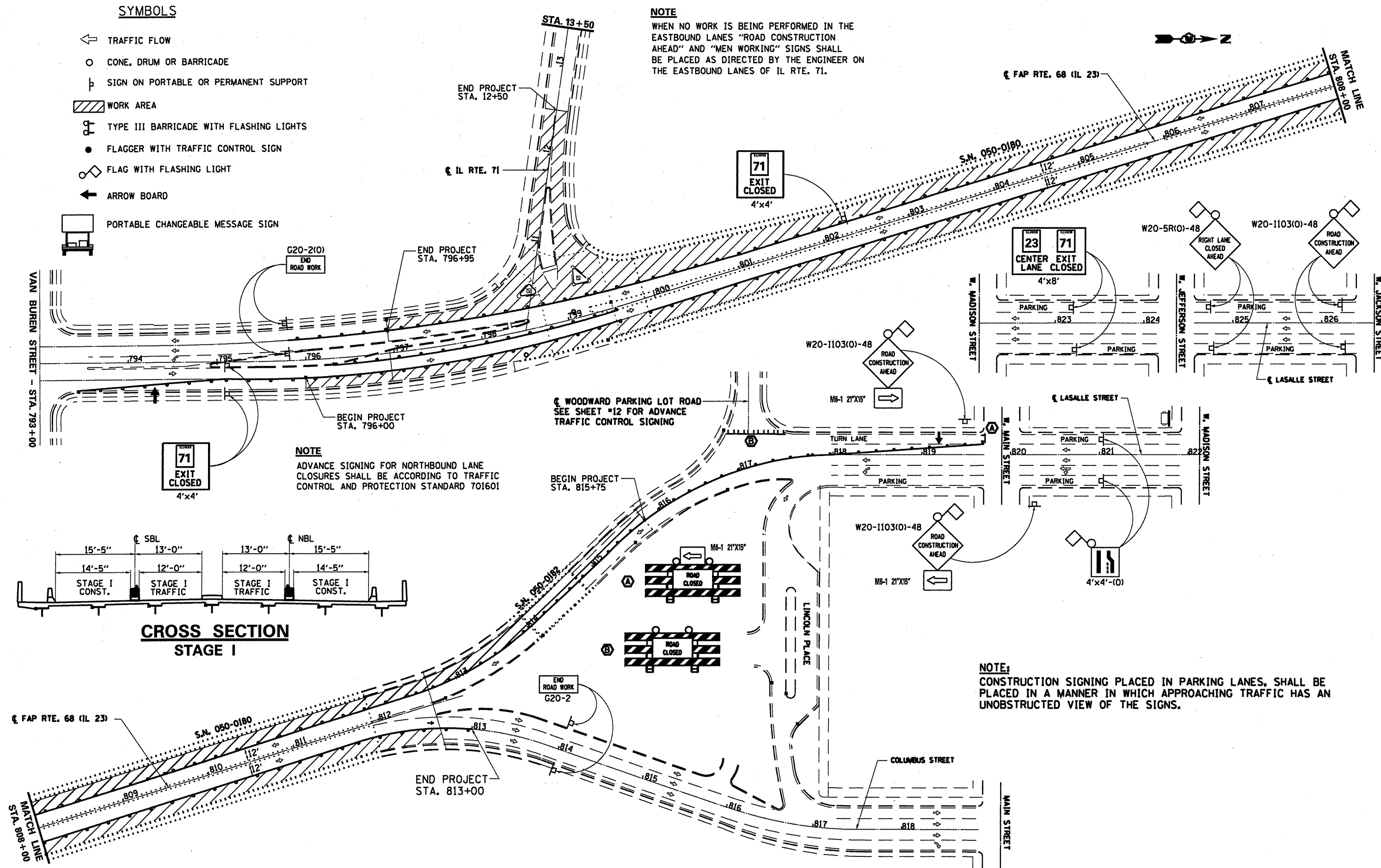


SYMBOLS

- ← TRAFFIC FLOW
- CONE, DRUM OR BARRICADE
- ⊥ SIGN ON PORTABLE OR PERMANENT SUPPORT
- ▨ WORK AREA
- ⊕ TYPE III BARRICADE WITH FLASHING LIGHTS
- FLAGGER WITH TRAFFIC CONTROL SIGN
- ◇ FLAG WITH FLASHING LIGHT
- ← ARROW BOARD
- ☐ PORTABLE CHANGEABLE MESSAGE SIGN

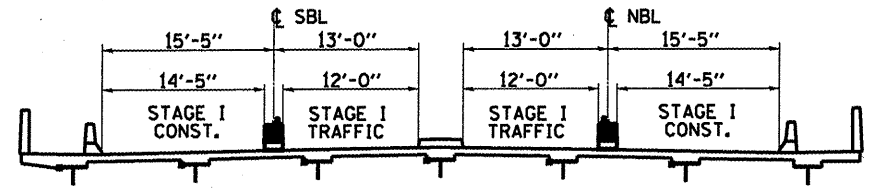
NOTE

WHEN NO WORK IS BEING PERFORMED IN THE EASTBOUND LANES "ROAD CONSTRUCTION AHEAD" AND "MEN WORKING" SIGNS SHALL BE PLACED AS DIRECTED BY THE ENGINEER ON THE EASTBOUND LANES OF IL RTE. 71.



NOTE
ADVANCE SIGNING FOR NORTHBOUND LANE CLOSURES SHALL BE ACCORDING TO TRAFFIC CONTROL AND PROTECTION STANDARD 701601

NOTE:
CONSTRUCTION SIGNING PLACED IN PARKING LANES, SHALL BE PLACED IN A MANNER IN WHICH APPROACHING TRAFFIC HAS AN UNOBSTRUCTED VIEW OF THE SIGNS.



CROSS SECTION STAGE I

FILE NAME =	USER NAME = woodshankr-1	DESIGNED - RON WOODSHANK	REVISED -	STATE OF ILLINOIS DEPARTMENT OF TRANSPORTATION	TRAFFIC CONTROL AND PROTECTION (STAGE I)	F.A.P. RTE. 68	SECTION (12R)-2	COUNTY LASALLE	TOTAL SHEETS 23	SHEET NO. 10		
ea\pwwork\pwwidat\woodshankr-1\d0143143	MAIN11-0366A66-detail.dgn	DRAWN - RON WOODSHANK	REVISED -			SCALE:	SHEET NO. 1 OF 2 SHEETS	STA.	TO STA.	CONTRACT NO. 66A56		
PLOT SCALE = 1/80.0000' / IN.		CHECKED -	REVISED -			ILLINOIS FED. AID PROJECT						
PLOT DATE = Dec 26, 2010 - 12:42:28 PM		DATE -	REVISED -									