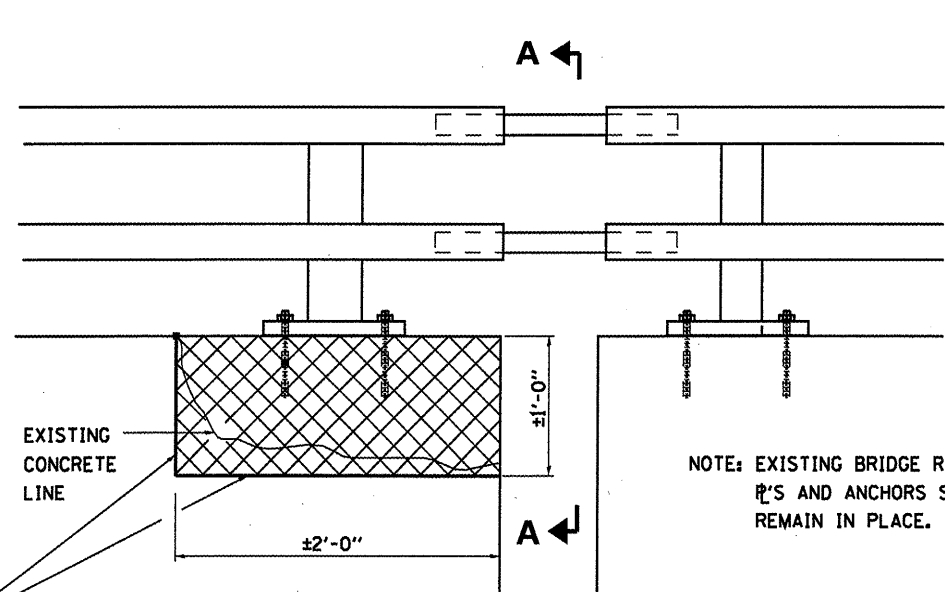
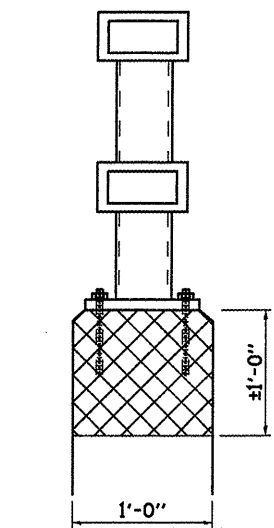


**PLAN (NORTH)**



**BENT 2 WEST PARAPET  
(LASALLE STREET)**

NOTE: EXISTING BRIDGE RAIL,  
R'S AND ANCHORS SHALL  
REMAIN IN PLACE.



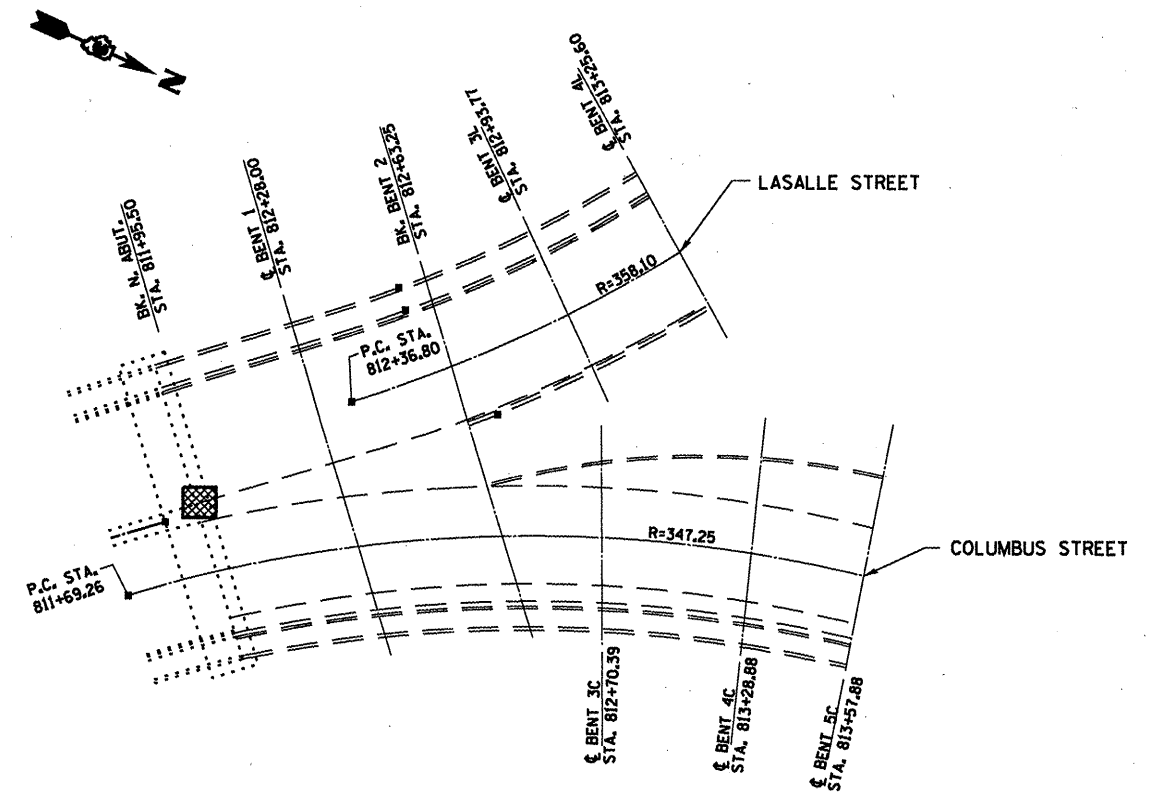
**SECTION A-A**

**BILL OF MATERIAL**

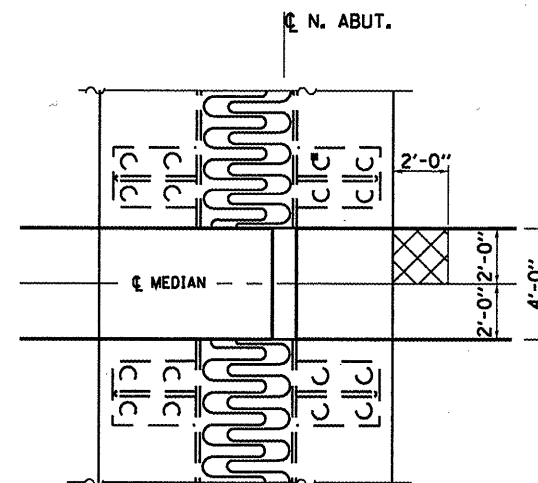
ITEM	UNIT	TOTAL
CONCRETE REMOVAL	CU YD	0.2



**REMOVE AND  
REPLACE CONCRETE**



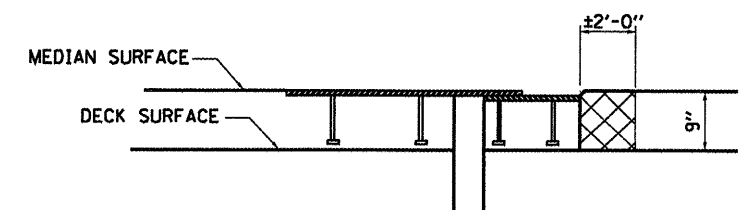
**PLAN (NORTH)**



**PLAN AT WEST ABUTMENT**

**BILL OF MATERIAL**

ITEM	UNIT	TOTAL
CONCRETE SUPERSTRUCTURE	CU YD	0.2



**ELEVATION AT MEDIAN**



**REMOVE AND  
REPLACE CONCRETE**

**CONCRETE REPAIRS**  
SN 050-0180  
FAP ROUTE 68 (IL 23)  
OVER ILLINOIS RIVER  
SECTION (12R)-2  
LASALLE COUNTY  
STA. 805+45

FILE NAME =	USER NAME = woodshankr1	DESIGNED - RON WOODSHANK	REVISED -
ca:\pw_work\pwidot\woodshankr1\d0143143\MAIN11-0366A56-details.dgn		DRAWN - RON WOODSHANK	REVISED -
	PLOT SCALE = 100.0000 / IN.	CHECKED -	REVISED -
	PLOT DATE = Dec 28, 2010 - 12:45:08 PM	DATE -	REVISED -

STATE OF ILLINOIS  
DEPARTMENT OF TRANSPORTATION

**CONCRETE REPAIRS**

SCALE: \_\_\_\_\_ SHEET NO. 7 OF 10 SHEETS STA. \_\_\_\_\_ TO STA. \_\_\_\_\_

F.A.P. RTE.	SECTION	COUNTY	TOTAL SHEETS	SHEET NO.
68	(12R)-2	LASALLE	23	20
			CONTRACT NO. 66A56	
ILLINOIS FED. AID PROJECT				