

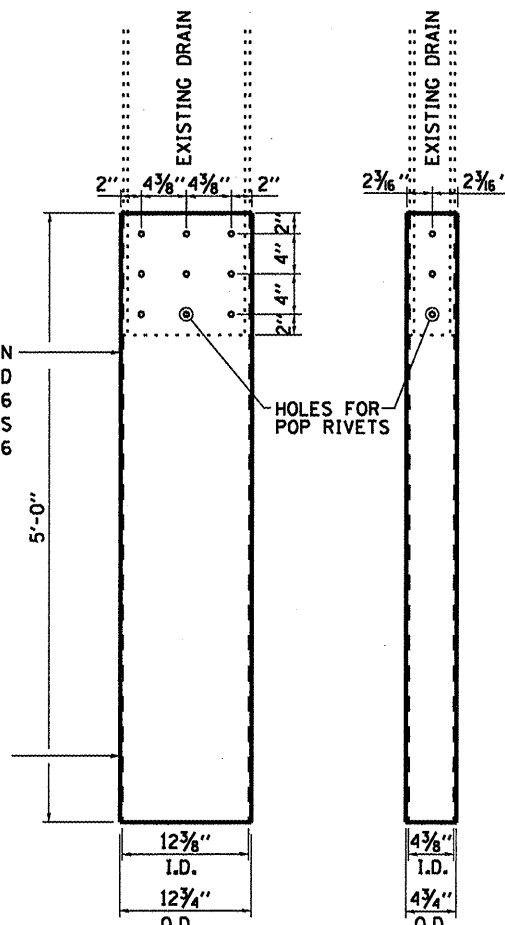
ELEVATION AT ABUTMENTS

DESCRIPTION OF WORK

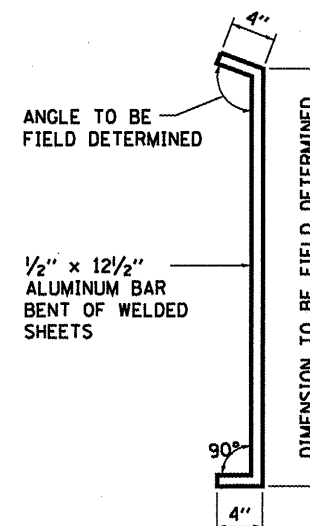
- A** CLEAN ELASTOMERIC TROUGH AT THE NORTH AND SOUTH ABUTMENTS.
- B** INSTALL OR REPLACE BOLTS, NUTS AND WASHERS AS REQUIRED TO REPAIR OR REPLACE DETERIORATED OR MISSING BOLTS.
- C** SEAL WITH SILICONE CAULK THE ENTIRE LENGTH AFTER CLEANING OF THE TROUGH HAS BEEN COMPLETED.
- D** INSTALL OR REPLACE BOLTS, NUTS AND WASHERS AS REQUIRED TO REPAIR OR REPLACE DETERIORATED OR MISSING BOLTS.
- E** EXTEND EXISTING TROUGH DRAINS AT EACH END OF SOUTH ABUTMENT

12³/₈" I.D. x 4³/₈" I.D. ALUMINUM DRAIN
 3¹/₁₆" ALUMINUM SHEETS WELDED
 ASTM: B209 ALLOY 3061-T6
 OR ALUMINUM EXTRUSIONS
 ASTM: B221 ALLOY 6061-T6

EXISTING 12" x 4" ALUMINUM DRAIN
 WALL THICKNESS = 1/8"



FRONT VIEW **SIDE VIEW**
DRAIN DETAIL



SUPPORT BRACKET

BILL OF MATERIAL

ITEM	UNIT	TOTAL
ABUTMENT DRAINS	EACH	2

EXPANSION JOINT TROUGH REPAIR
 SN 050-0180
 FAP ROUTE 68 (IL 23)
 OVER ILLINOIS RIVER
 SECTION (12R1)-2
 LASALLE COUNTY
 STA. 805+45

FILE NAME =	USER NAME = woodshankr1	DESIGNED - RON WOODSHANK	REVISED -
ct:\pw_work\pwidot\woodshankr1\d0143143\CMAIN11-0366A56-detail1.dgn		DRAWN - RON WOODSHANK	REVISED -
PLOT SCALE = 100.0000' / IN.		CHECKED -	REVISED -
PLOT DATE = Dec 28, 2010 - 12:45:43 PM		DATE -	REVISED -

STATE OF ILLINOIS
 DEPARTMENT OF TRANSPORTATION

EXPANSION JOINT TROUGH

SCALE: SHEET NO. 9 OF 10 SHEETS STA. TO STA.

F.A.P. RTE. 68	SECTION (12R1)-2	COUNTY LASALLE	TOTAL SHEETS 23	SHEET NO. 22
				CONTRACT NO. 66A56
ILLINOIS FED. AID PROJECT				