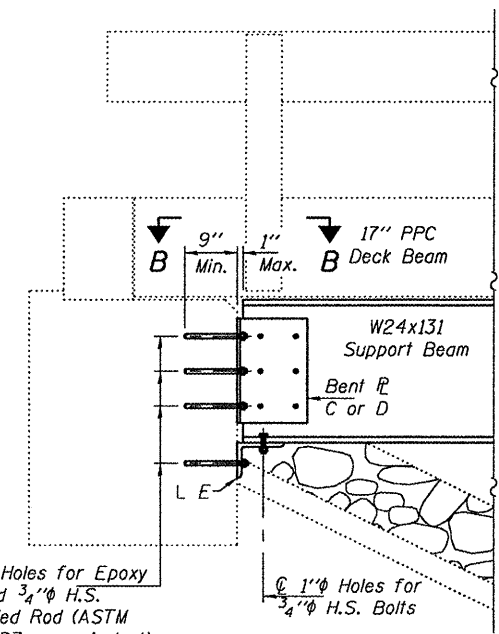
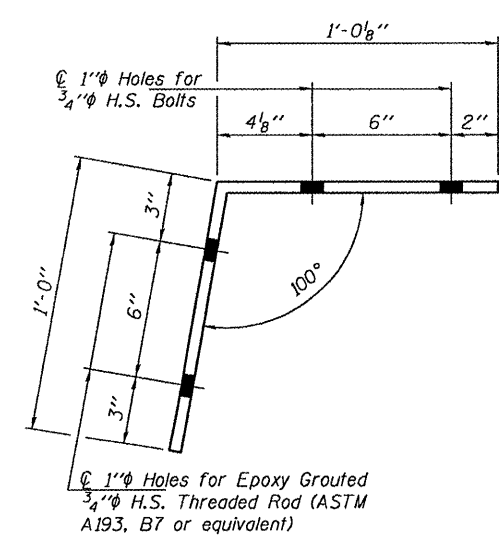


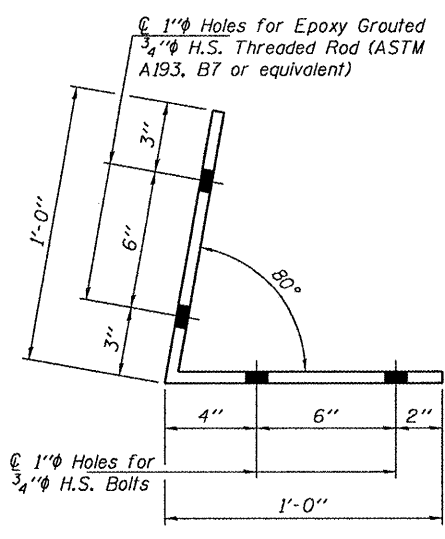
CROSS-SECTION
(Looking South)



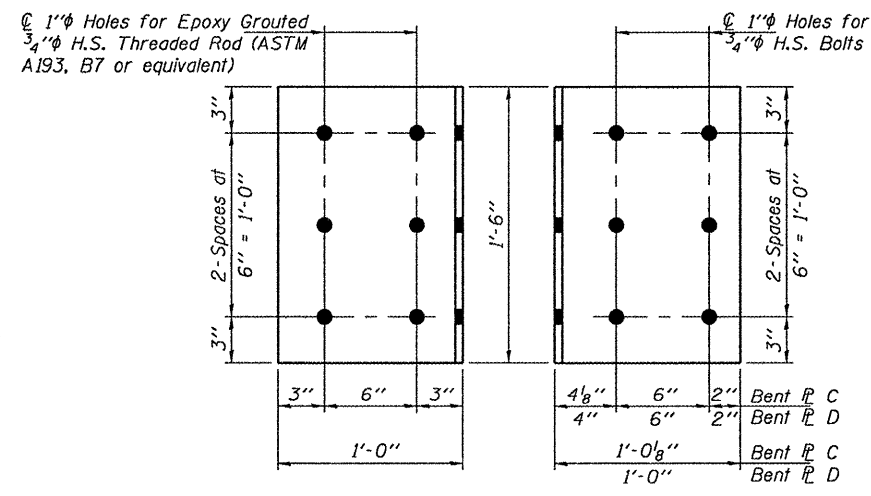
SECTION A-A
Excavate riprap as required to facilitate installation of W24x131 Support Beam. Cost included with Furnishing & Erecting Structural Steel.



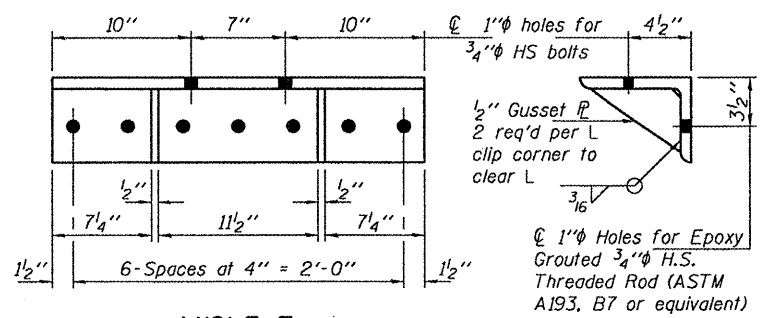
BENT PLATE C
PL 1/2" x 1'-6" x 2'-0 1/8"
(8 Required)



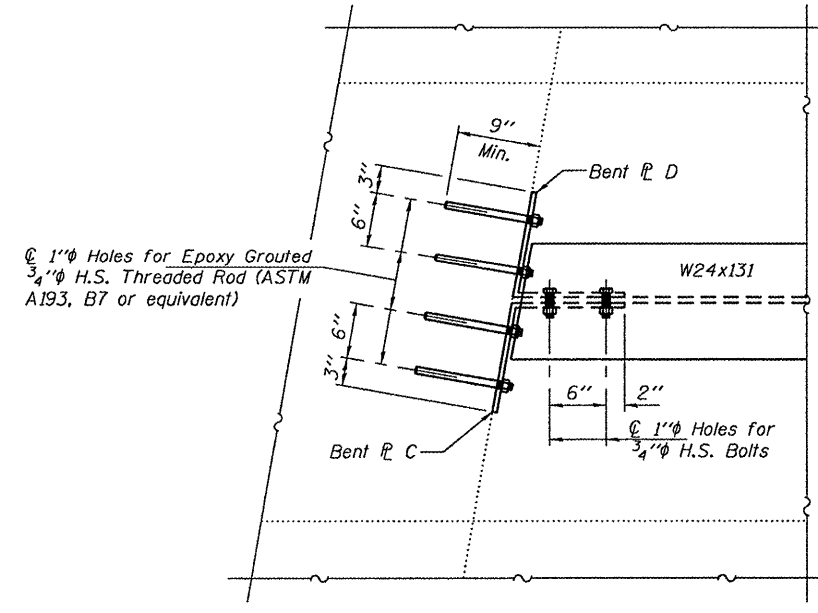
BENT PLATE D
PL 1/2" x 1'-6" x 2'-0"
(8 Required)



TYPICAL BENT PLATE ELEVATIONS



ANGLE E
L 8 x 6 x 3/4 x 2'-3"
(8 Required)



SECTION B-B

**OLD U.S. ROUTE 45
OVER LANGAN CREEK**

DESIGNED - GGE	EXAMINED - <i>Jaime F. Joffe</i>
CHECKED - IJL	PASSED - <i>Kyle M. Steffen</i>
DRAWN - Kyle M. Steffen	
CHECKED - GGE	

DATE - JANUARY 27, 2011	STATE OF ILLINOIS DEPARTMENT OF TRANSPORTATION
ACTING ENGINEER OF BRIDGES AND STRUCTURES	

STATE OF ILLINOIS DEPARTMENT OF TRANSPORTATION	
P.P.C. DECK BEAM SUPPORT DETAILS SN 038-0184	
SHEET NO. 2 OF 2 SHEETS	

F.A.S. RTE. 1324	SECTION (38-BR1)	COUNTY IROQUOIS	TOTAL SHEETS 6	SHEET NO. 6
CONTRACT NO. 66A70				
ILLINOIS FED. AID PROJECT				