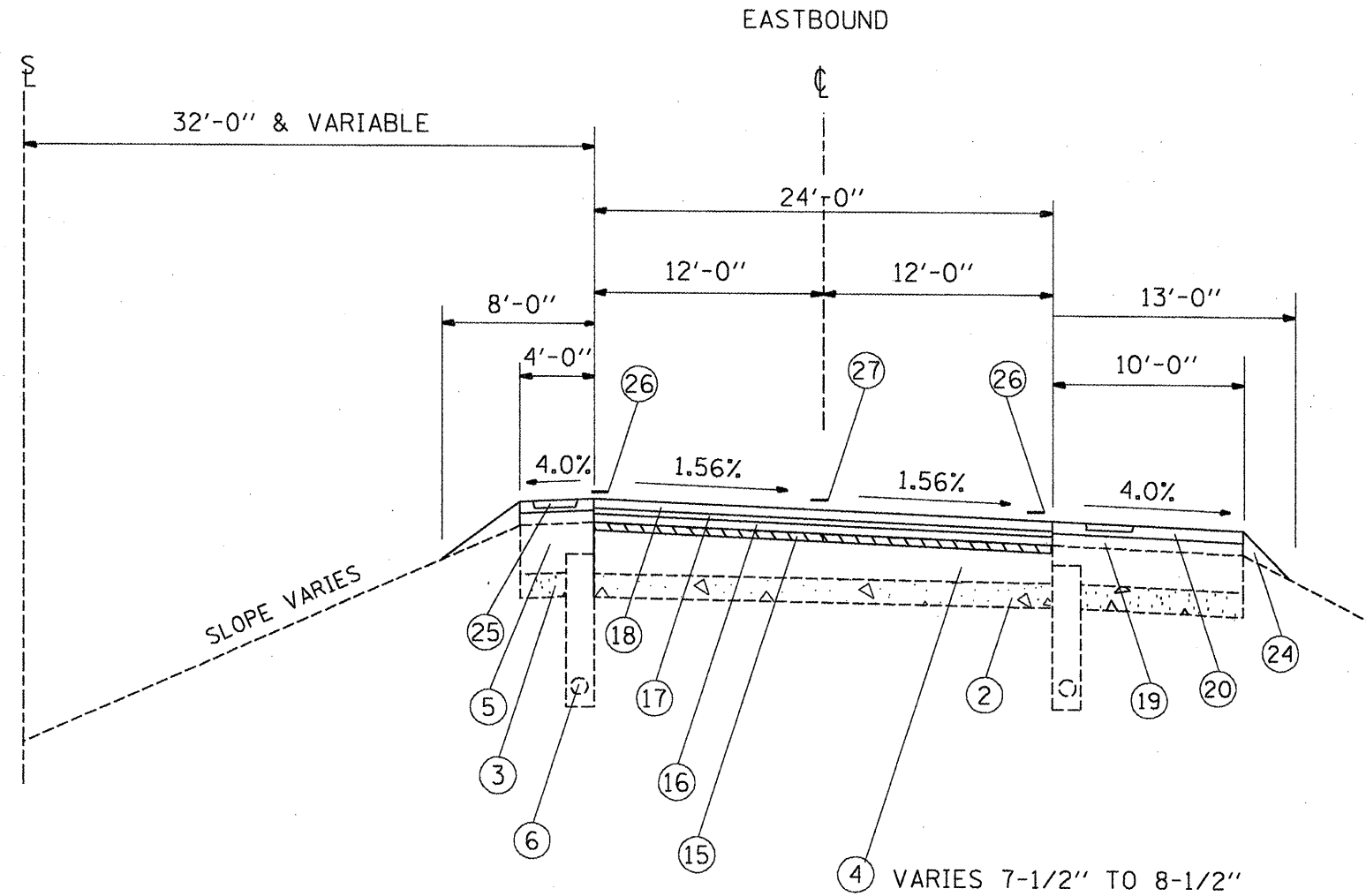


****NOTE**
 FOR MILLING PURPOSES THE TOP 1-1/2" OF SURFACE MUST BE REMOVED.
 PAVEMENT CORES WERE TAKEN, AND THE TOP SURFACE HAS FAILED.



CURVE 3 EASTBOUND
 504+35.46 (PC) TO 515+39.50 (PT)

EXISTING ITEMS

1. JOINTED P.C.C. PAVEMENT, 10"
2. CONTINUOUS REINFORCED CONCRETE PAVEMENT, 7"
3. STABILIZED SHOULDER
4. BITUMINOUS OVERLAY
5. BITUMINOUS SHOULDERS
6. PIPE UNDERDRAIN 4"

PROPOSED ITEMS

15. HMA SURFACE REMOVAL, 1-1/2" **
16. POLY. HMA BINDER CSE, IL-12.5, N90, 2-1/4"
17. POLY. LEVEL. BINDER (MACHINE METHOD), IL-4.75, N50 (3/4" OR 1")
18. POLY. HMA SURFACE CSE, MIX "D" N90, (1-1/2")
19. POLY. HMA SURFACE CSE, MIX "D" N50, (1-1/2")
20. HMA SURF. CSE, MIX "C", N50 (3")
21. PIPE UNDERDRAINS, 4"
22. HMA SHOULDERS 8"
23. HMA PAVEMENT (FULL DEPTH) 13-1/4"
24. AGGREGATE SHOULDER, TYPE B
25. SHOULDER RUMBLE STRIP
26. GROOVED IN PAVEMENT MARKING
27. PREFORMED PAVEMENT MARKING
28. SUB-BASE GRANULAR MATERIAL, TYPE A, 12"
29. SUB-BASE GRANULAR MATERIAL, TYPE C
30. HMA SURFACE REMOVAL, 3"
31. POLY. LEVEL. BINDER (MACHINE METHOD), IL-4.75, N50, 1"
32. PAVED SHOULDER REMOVAL
33. TEMPORARY SHOULDERS
34. PCC BASE COURSE, 12"

FILE NAME = D468506-shr-typical.dgn	USER NAME = bargstokeroe	DESIGNED -	REVISED -	STATE OF ILLINOIS DEPARTMENT OF TRANSPORTATION	EXISTING / PROPOSED TYPICAL SECTIONS				F.A.I. RTE.	SECTION	COUNTY	TOTAL SHEETS	SHEET NO.	
		DRAWN -	REVISED -		SCALE:	SHEET NO.	OF	SHEETS	STA.	TO STA.	74	(48-27)R, RS-4	KNOX	103 / 25
		PLOT SCALE = 100.0000' / IN.	CHECKED -											
		PLOT DATE = 12/20/2010	DATE -											
CONTRACT NO. 68506														
ILLINOIS FED. AID PROJECT														