

LT. STA. 370+88 TO STA. 378+51
HMA SHOULDER, 8" = 341.8 SQ. YD.
RT. STA. 371+29 TO STA. 378+08
HMA SHOULDER, 10.5" = 776.5 SQ. YD.

STA. 372+03 TO STA. 377+45
PCC BASE CSE 12" = 1493.0 SQ. YD.
PAVEMENT FABRIC = 1493.0 SQ. YD.
TIE BARS, 3/4" = 217 EACH
SUB-BASE GRAN. MAT'L TYPE A 12" = 2436.9 SQ. YD.
GEOTECH. FAB. FOR GRND. STAB. = 2436.9 SQ. YD.

LT. STA. 370+88 TO 378+51
PIPE UNDERDRAINS, 4" = 763 FT.
PIPE UNDERDRAIN, 4" (SPL.) = 3 LOC. @ 12.5 FT. = 37.5 FT.
CONC. HDWL. FOR PIPE UNDERDRAINS = 3 EACH

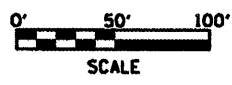
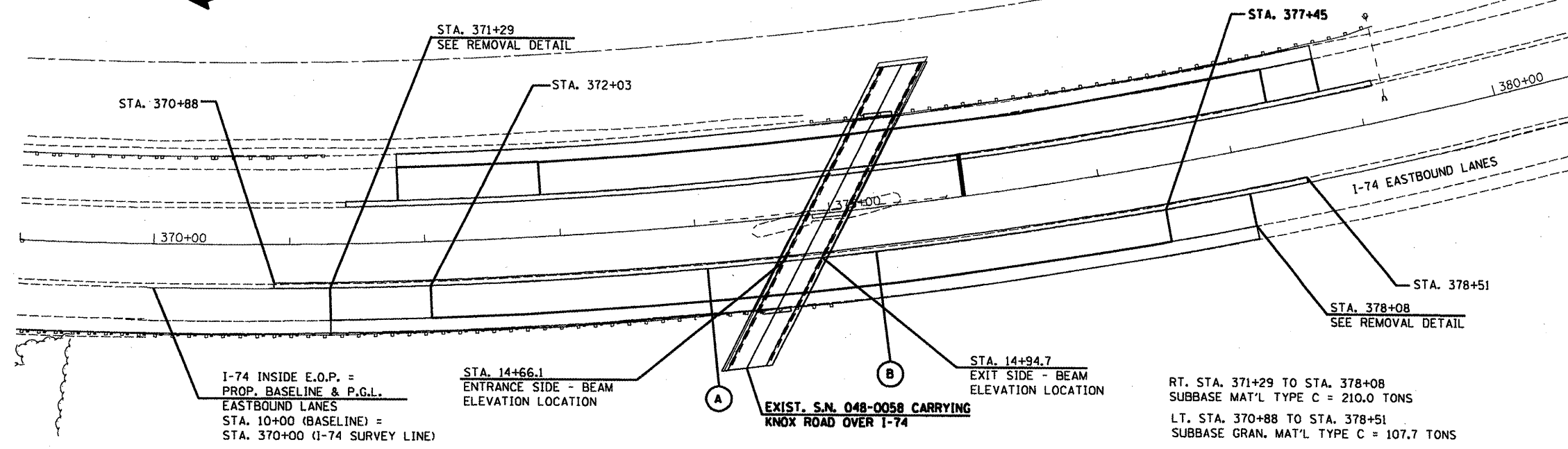
NOTE:
1. FOR HMA, GUARDRAIL, AGG. SHOULDERS, SEE SCHEDULES FOR QUANTITIES.
2. INSTALL UNDERDRAINS ACCORDING TO STD. 601001 SEE SCHEDULES FOR LOCATIONS AND QUANTITIES
3. GRADING AND SHAPING DITCHES WILL REQUIRE APPROX. 384 CU.YD. OF FILL. THIS WILL BE INCLUDED IN THE COST OF GRADING AND SHAPING DITCHES.

STA. 370+88 TO 379+12 (MEDIAN DITCH)
PROP. GRADING AND SHAPING = 824 FT.
RT. STA. 371+29 TO STA. 378+08
PROP. GRADING AND SHAPING = 679 FT.

LT. STA. 370+88 TO STA. 378+51
TEMP. SHOULDERS = 341.8 SQ. YD.
(TO BE PLACED BEFORE STAGING
FOR PAVEMENT REMOVAL IN DRIVING LANE.
SHOULDER WILL BE PLACED AT A THICKNESS OF 10".
SEE MIXTURES TABLE FOR MIX DESIGN FOR TEMP. SHLDS.)

DATE	
BY	
REVISIONS	
PLANNED	
ALIGNED	
CHECKED	
NO. OF SHEETS	
FILE NAME	

DATE	
BY	
REVISIONS	
PLANNED	
GRADES CHECKED	
NO. NOTED	
STATUS	
NOTATIONS	
CHD	



EASTBOUND BASELINE	I-74 SURVEY LINE	OFFSET
10+00	370+00	32.74
11+00	370+99.15	32.74
12+00	371+98.30	32.74
13+00	372+97.45	32.74
14+00	373+96.60	32.74
15+00	374+95.75	32.74
16+00	375+94.90	32.74
17+00	376+94.05	32.74
18+00	377+93.20	32.74
19+00	378+92.35	32.74
20+00	379+91.50	32.74

I-74 INSIDE E.O.P. =
PROP. BASELINE & P.G.L.
EASTBOUND LANES
STA. 10+00 (BASELINE) =
STA. 370+00 (I-74 SURVEY LINE)

STA. 14+66.1
ENTRANCE SIDE - BEAM
ELEVATION LOCATION

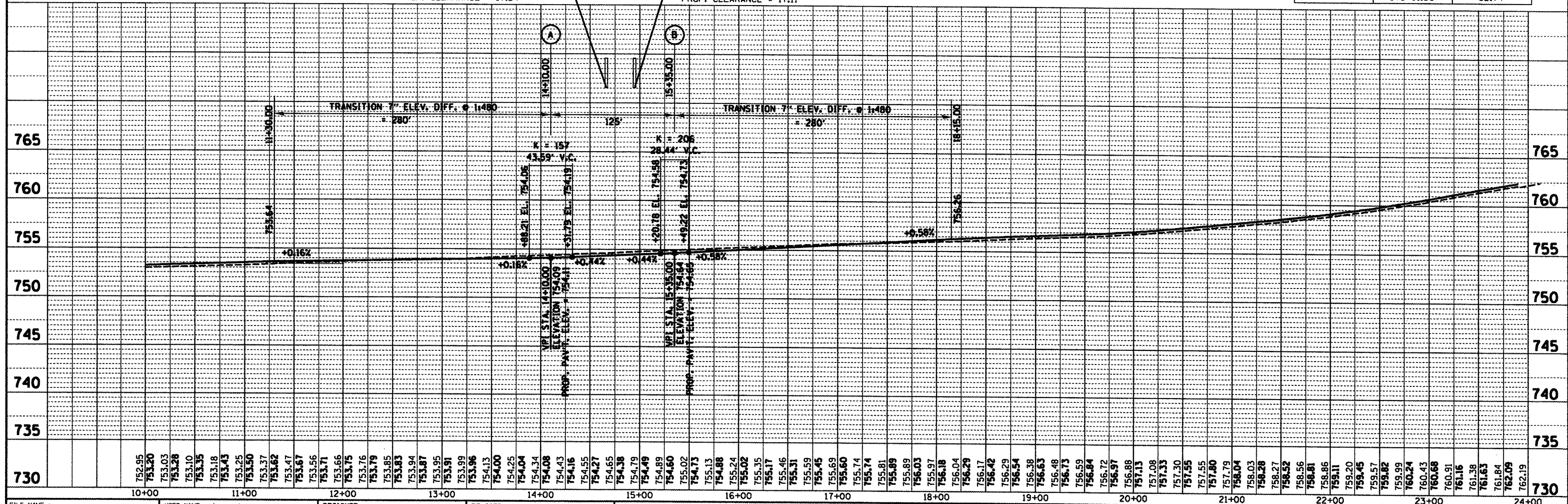
STA. 14+94.7
EXIT SIDE - BEAM
ELEVATION LOCATION

RT. STA. 371+29 TO STA. 378+08
SUBBASE MAT'L TYPE C = 210.0 TONS
LT. STA. 370+88 TO STA. 378+51
SUBBASE GRAN. MAT'L TYPE C = 107.7 TONS

STA. 14+66.1
BOTTOM OF BEAM @ P.G.L. = 771.58
PROP. PAV'T. @ P.G.L. = 754.34
PROP. CLEARANCE = 17.24'

STA. 14+94.7
BOTTOM OF BEAM @ P.G.L. = 771.58
PROP. PAV'T. @ P.G.L. = 754.47
PROP. CLEARANCE = 17.11'

RT. STA. 371+29 TO 378+08
PIPE UNDERDRAINS, 4" = 679 FT.
PIPE UNDERDRAIN, 4" (SPL.) = 3 LOC. @ 16.5 FT. = 49.5 FT.
CONC. HDWL. FOR PIPE UNDERDRAINS = 3 EACH



FILE NAME = D468508-prof-bridge.dgn	USER NAME = bergsteker	DESIGNED -	REVISED -	STATE OF ILLINOIS DEPARTMENT OF TRANSPORTATION	PROPOSED PLAN & PROFILE DETAIL UNDER SN 048-0058 I-74 EASTBOUND LANES	SCALE: 1" = 40'	SHEET NO. 74	OF 103	SHEETS	STA. 10+00	TO STA. 24+00	
	PLOT SCALE = 1/8" = 100'	DRAWN -	REVISED -			F.A.I. RTE. 74	SECTION (48-271R,RS-4)	COUNTY KNOX	TOTAL SHEETS 103	SHEET NO. 37		
	PLOT DATE = 12/20/2010	CHECKED -	REVISED -			CONTRACT NO. 68506			ILLINOIS FED. AID PROJECT			
		DATE -	REVISED -									