

LT. STA. 371+81 TO STA. 378+73
HMA SHOULDER, 10.5' = 1039.6 SQ. YD.
RT. STA. 371+42 TO STA. 379+12
HMA SHOULDER, 8' = 339.6 SQ. YD.



EXIST. S.N. 048-0058 CARRYING
KNOX ROAD OVER I-74

NOTE:
1. FOR HMA, GUARDRAIL, AGG. SHOULDERS,
SEE SCHEDULES FOR QUANTITIES.
2. INSTALL UNDERDRAINS ACCORDING TO STD. 601001
SEE SCHEDULES FOR LOCATIONS AND QUANTITIES

LT. STA. 371+81 TO STA. 378+73
PROP. GRADING AND SHAPING = 692 FT.

RT. STA. 371+42 TO STA. 379+12
TEMP. SHOULDERS = 339.6 SQ. YD.
(TO BE PLACED BEFORE STAGING
FOR PAVEMENT REMOVAL IN DRIVING LANE.
SHOULDER WILL BE PLACED AT A THICKNESS OF 10'.
SEE MIXTURES TABLE FOR MIX DESIGN FOR TEMP. SHLDS.)

WESTBOUND BASELINE	I-74 SURVEY LINE	OFFSET
10+00	370+00	31.49
11+00	371+00.83	31.49
12+00	372+01.67	31.49
13+00	373+02.50	31.49
14+00	374+03.33	31.49
15+00	375+04.16	31.49
16+00	376+04.99	31.49
17+00	377+05.82	31.49
18+00	378+06.65	31.49
19+00	379+07.49	31.49
20+00	380+08.32	31.49

I-74 INSIDE E.O.P. =
PROP. BASELINE & P.G.L.
WESTBOUND LANES
STA. 10+00 (BASELINE) =
STA. 370+00 (I-74 SURVEY LINE)

STA. 14+99.86
EXIT SIDE - BEAM
ELEVATION LOCATION

STA. 15+28.69
ENTRANCE SIDE - BEAM
ELEVATION LOCATION

STA. 378+33
SEE REMOVAL DETAIL

STA. 378+73

STA. 371+81
SEE REMOVAL DETAIL

STA. 372+87

I-74 WESTBOUND LANES

380+00

STA. 371+42

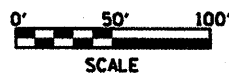
LT. STA. 371+81 TO STA. 378+73
PIPE UNDERDRAINS, 4" = 692 FT.
PIPE UNDERDRAIN, 4" (SPL.) = 3 LOC. @ 16.5 FT. = 49.5 FT.
CONC. HDWL. FOR PIPE UNDERDRAINS = 3 EACH

RT. STA. 371+42 TO STA. 379+12
PIPE UNDERDRAINS, 4" = 770 FT.
PIPE UNDERDRAIN, 4" (SPL.) = 3 LOC. @ 12.5 FT. = 37.5 FT.
CONC. HDWL. FOR PIPE UNDERDRAINS = 3 EACH

STA. 372+87 TO STA. 378+33
PCC BASE CSE 12" = 1469.0 SQ. YD.
PAVEMENT FABRIC = 1469.0 SQ. YD.
TIE BARS, 3/4" = 218 EACH
DOWEL BARS, 1" = 46 EACH
SUB-BASE GRAN. MAT'L TYPE A 12" = 2364.2 SQ. YD.
GEOTECH. FAB. FOR GRND. STAB. = 2364.2 SQ. YD.

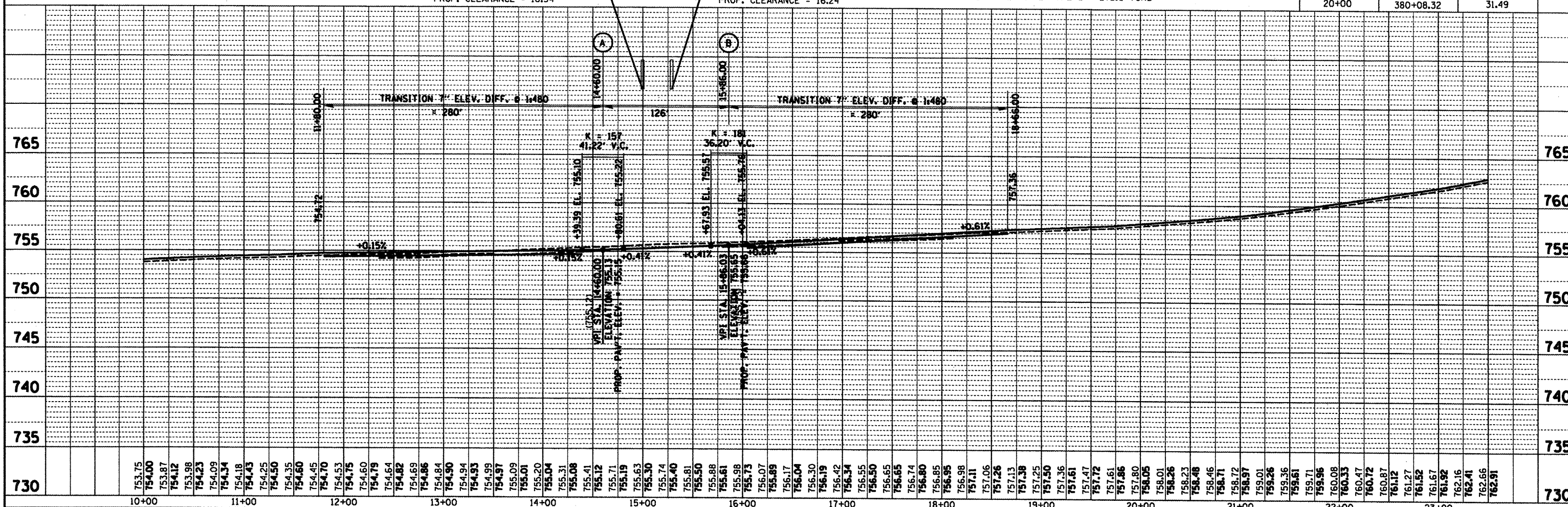
RT. STA. 371+42 TO STA. 379+12
SUBBASE MAT'L TYPE C = 121.8 TONS

LT. STA. 371+81 TO STA. 378+73
SUBBASE GRAN. MAT'L TYPE C = 273.6 TONS



STA. 14+99.86
BOTTOM OF BEAM @ P.G.L. = 771.64
PROP. PAV'T. @ P.G.L. = 755.3
PROP. CLEARANCE = 16.34'

STA. 15+28.69
BOTTOM OF BEAM @ P.G.L. = 771.65
PROP. PAV'T. @ P.G.L. = 755.41
PROP. CLEARANCE = 16.24'



FILE NAME = 0468508-prof-br1dgc.dgn	USER NAME = bergsakere	DESIGNED - DRAWN - CHECKED - DATE -	REVISED - REVISED - REVISED - REVISED -	STATE OF ILLINOIS DEPARTMENT OF TRANSPORTATION				PROPOSED PLAN & PROFILE DETAIL UNDER SN 048-0058 I-74 WESTBOUND LANES				F.A.I. RTE. 74	SECTION (48-27)R-RS-4	COUNTY KNOX	TOTAL SHEETS 103	SHEET NO. 39	CONTRACT NO. 68506
PLOT SCALE = 100.0000' / IN. PLOT DATE = 12/28/2010				SCALE: SHEET NO. OF SHEETS STA. TO STA.				ILLINOIS FED. AID PROJECT									

DATE
BY
SURVEYED
CHECKED
ALIGNED
RT. OF WAY CHECKED
PAID FILE NAME

DATE
BY
PROFILE SURVEYED
PLOTTED
CHECKED
S.M. NOTED
STRUCTURE NOTATIONS OK'D