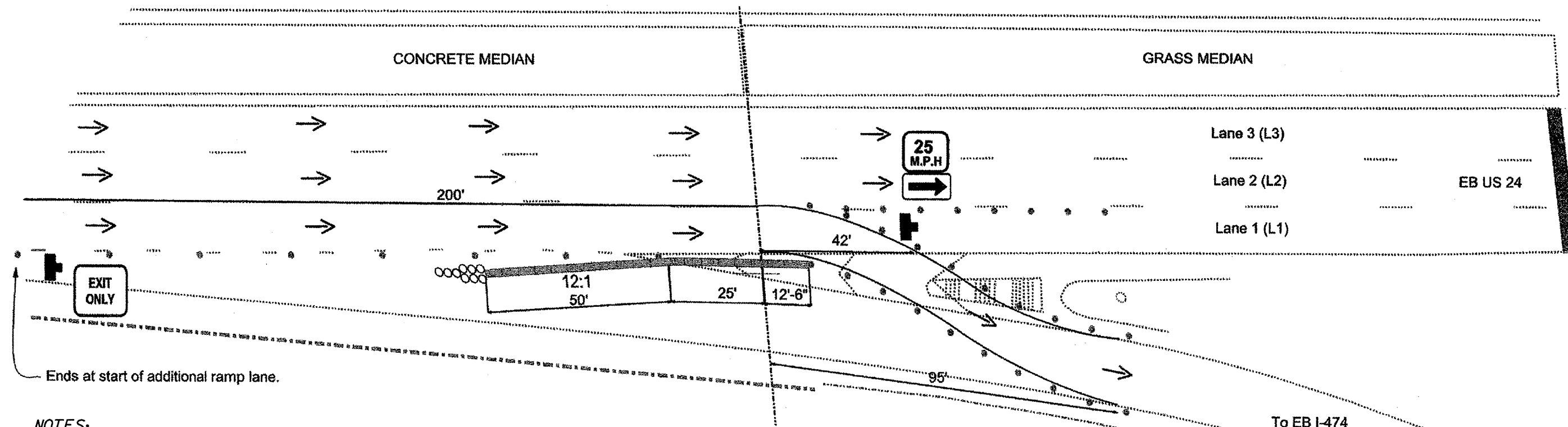
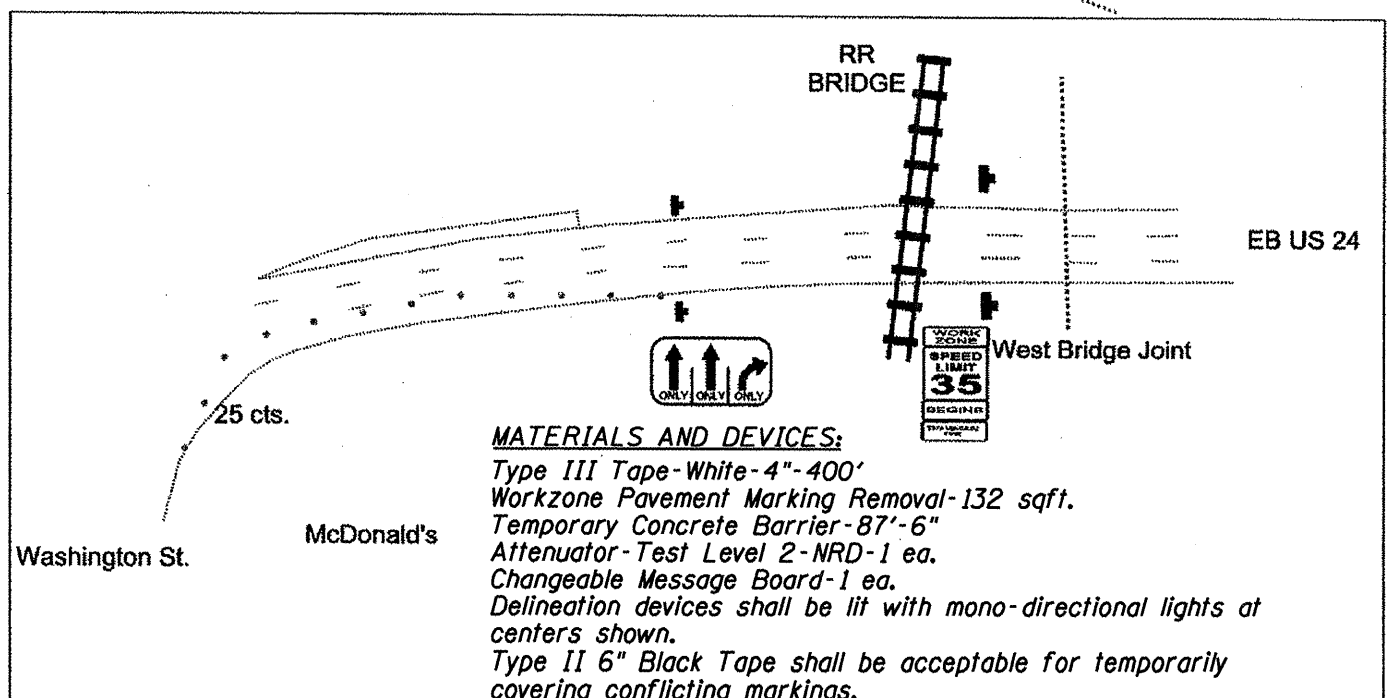
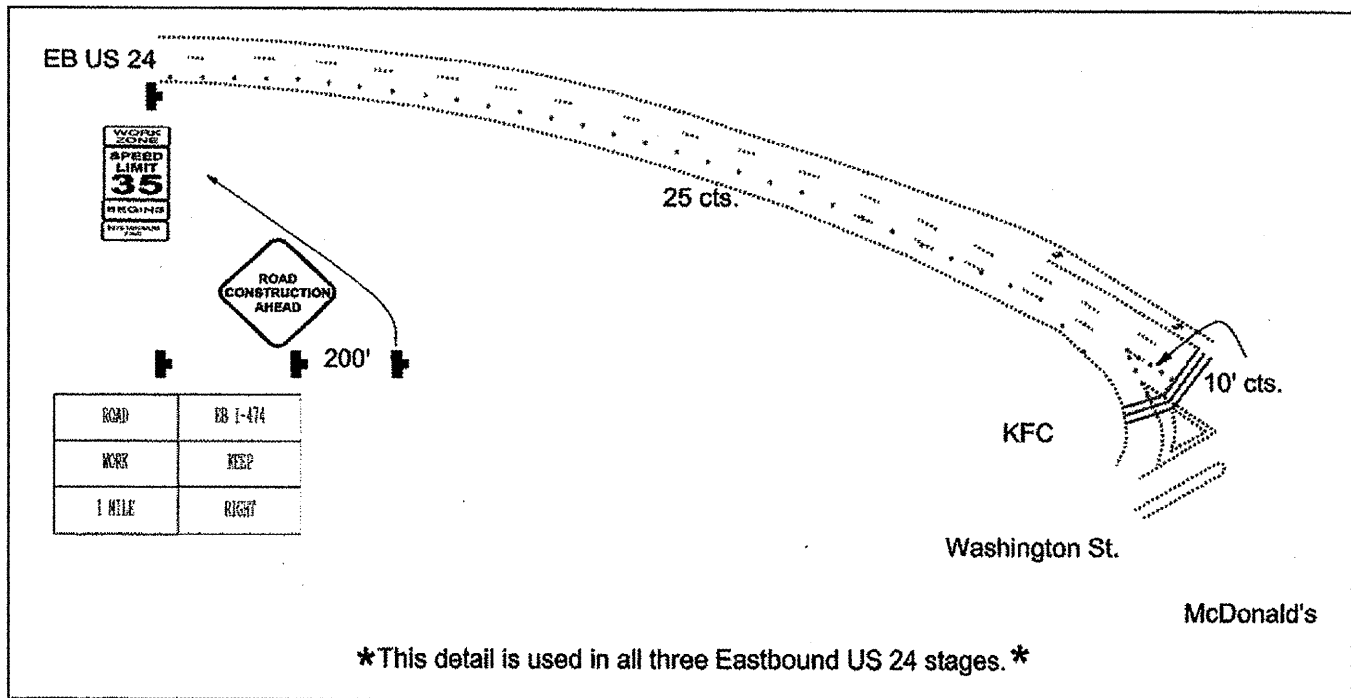


Stage 3- Eastbound US 24



NOTES:
 Changeable Message Signs shall be placed in locations shown at least one week in advance of project start for early traffic notification.



S:\GEN\DRAWING\STANDARD\PLANS\SQUAD BRIDGES\BRIDGE CONTRACTS\JOINTS\68995 SN072-0134\SN072-0134 US24ovrKickapooCrk.dgn

FILE NAME = SN072-0134 US24ovrKickapooCrk.dgn	USER NAME = jonesce	DESIGNED - D. HOFFMAN	REVISED -	STATE OF ILLINOIS DEPARTMENT OF TRANSPORTATION	TRAFFIC CONTROL STRUCTURE NO. 072-0134		F.A.P. RITE	SECTION	COUNTY	TOTAL SHEETS	SHEET NO.	
		DRAWN - D. HOFFMAN	REVISED -		SCALE: _____	SHEET NO. _____ OF _____ SHEETS	STA. _____ TO STA. _____	317	(48B)-1	PEORIA	26	17
		CHECKED -	REVISED -					N.Abut. Rehab. Brgs./Jt. Repl.		CONTRACT NO. 68995		
		DATE - 12/30/2010	REVISED -					ILLINOIS FED. AID PROJECT				