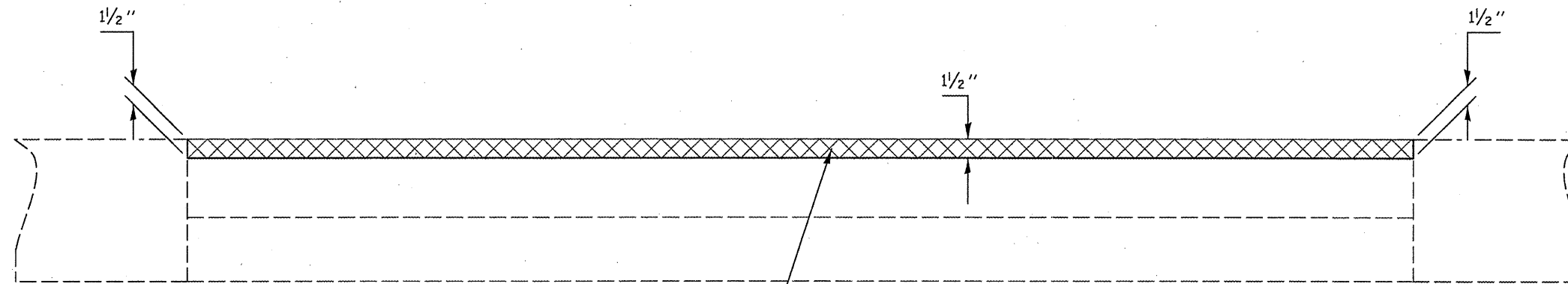


DETAIL FOR C.H. 36 MILLING AND PAVING AT INLAY LOCATIONS (1 1/2" MILL AND FILL)

C.H. 36 STATION TO STATION
 16+92.44 69+50.00



HOT-MIX ASPHALT SURFACE COURSE,
 MIX "C", N50, (168 LBS/SQ YD)
 OR HMA SHOULDERS 168 LBS/SQ YD



HOT-MIX ASPHALT SURFACE REMOVAL, 1 1/2"

△ DETAIL FOR DOWNS INTERCHANGE MILLING
 AND PAVING TRANSITIONS AT 5 3/4" MILLING LOCATIONS
 WAS REMOVED

SHEET 10 OF 10

△ SHEET REVISED 2-23-11

FILE NAME =	USER NAME = piersonbr	DESIGNED - BJH	REVISED - △ Addendum #1 2/11
or\pwwork\pwwork\piersonbr\d0158340\05	0550-sht-details.dgn	DRAWN - BJH 8/31/2010	REVISED -
	PLOT SCALE = 48.0000' / in.	CHECKED -	REVISED -
	PLOT DATE = 2/19/2011	DATE -	REVISED -

**STATE OF ILLINOIS
 DEPARTMENT OF TRANSPORTATION**

MILLING AND PAVING TRANSITION DETAILS

SCALE: SHEET NO. 10 OF 10 SHEETS STA. TO STA.

F.A.I. RTE.	SECTION	COUNTY	TOTAL SHEETS	SHEET NO.
74	(57-20(1),21,22)RS-3	McLean	150	85
CONTRACT NO. 70550				
ILLINOIS FED. AID PROJECT				