

LOCATION OF WORK:

FAI 74
RURAL
INTERSTATE
MCLEAN COUNTY
STA. 737+00 TO STA. 1111+00
E OF US 51 TO CH 36 AT DOWNS

FUNDING BREAKOUT:
CONSTRUCTION TYPE CODE:

90% FEDERAL / 10% STATE
0005

CODE NO.	ITEM	UNIT	TOTAL QUANTITY
20200100	EARTH EXCAVATION	CU YD	280.0
20400800	FURNISHED EXCAVATION	CU YD	600.0
21400100	GRADING AND SHAPING DITCHES	FOOT	1,025.0
* 25000210	SEEDING, CLASS 2A	ACRE	3.0
* 25000350	SEEDING, CLASS 7	ACRE	3.0
* 25000400	NITROGEN FERTILIZER NUTRIENT	POUND	270.0
* 25000500	PHOSPHORUS FERTILIZER NUTRIENT	POUND	270.0
* 25000600	POTASSIUM FERTILIZER NUTRIENT	POUND	270.0
* 25100115	MULCH, METHOD 2	ACRE	6.0
28000250	TEMPORARY EROSION CONTROL SEEDING	POUND	300.0
28000305	TEMPORARY DITCH CHECKS	FOOT	325.0
28000500	INLET AND PIPE PROTECTION	EACH	20.0
28100107	STONE RIPRAP, CLASS A4	SQ YD	530.0
28200200	FILTER FABRIC	SQ YD	530.0
40600100	BITUMINOUS MATERIALS (PRIME COAT)	GALLON	33,000.0
40600300	AGGREGATE (PRIME COAT)	TON	655.0
40600895	CONSTRUCTING TEST STRIP	EACH	3.0
40600982	HOT-MIX ASPHALT SURFACE REMOVAL - BUTT JOINT	SQ YD	3,625.0
40600990	TEMPORARY RAMP	SQ YD	1,600.0
40603244	POLYMERIZED HOT-MIX ASPHALT BINDER COURSE, IL-19.0, FG, N105	TON	17,850.0

* DENOTES SPECIALTY ITEM

⚠ REVISIED 2-23-11


FILE NAME =	USER NAME = hogenbj	DESIGNED - BJH	REVISED -	STATE OF ILLINOIS DEPARTMENT OF TRANSPORTATION	SUMMARY OF QUANTITIES	F.A.I. RTE.	SECTION	COUNTY	TOTAL SHEETS	SHEET NO.
ct:\pwork\pwidot\hogenbj\d0158340\0570550-shr-500.dgn	DRAWN - BJH 10/12/2010	REVISED -	74			(57-20(1),21,22)RS-3	MCLEAN	150	7	
PLOT SCALE = 100,0000' / IN.	CHECKED -	REVISED -	CONTRACT NO. 70550							
PLOT DATE = 10/20/2010	DATE -	REVISED -	ILLINOIS FED. AID PROJECT							
SCALE: _____		SHEET NO. 1 OF 7 SHEETS		STA. _____ TO STA. _____						

LOCATION OF WORK:

FAI 74
RURAL
INTERSTATE
MCLEAN COUNTY
STA. 737+00 TO STA. 1111+00
E OF US 51 TO CH 36 AT DOWNS

FUNDING BREAKOUT:
CONSTRUCTION TYPE CODE:

90% FEDERAL / 10% STATE
0005

CODE NO.	ITEM	UNIT	TOTAL QUANTITY
40603245	POLYMERIZED HOT-MIX ASPHALT BINDER COURSE, IL-19.0, N105	TON	2,860.0
40603310	HOT-MIX ASPHALT SURFACE COURSE, MIX "C", N50	TON	1,325.0
40603320	HOT-MIX ASPHALT SURFACE COURSE, MIX "C", N90	TON	2,715.0
40603525	POLYMERIZED HOT-MIX ASPHALT SURFACE COURSE, MIX "C", N105	TON	1,750.0
40603550	POLYMERIZED HOT-MIX ASPHALT SURFACE COURSE, MIX "D", N105	TON	13,700.0
40800010	BITUMINOUS MATERIALS (PRIME COAT)	GALLON	75.0
40800030	AGGREGATE (PRIME COAT)	TON	2.0
40800050	INCIDENTAL HOT-MIX ASPHALT SURFACING	TON	75.0
44000155	HOT-MIX ASPHALT SURFACE REMOVAL, 1 1/2"	SQ YD	94,000.0
44000156	HOT-MIX ASPHALT SURFACE REMOVAL, 1 3/4"	SQ YD	4,625.0
44000158	HOT-MIX ASPHALT SURFACE REMOVAL, 2 1/4"	SQ YD	21,550.0
44000162	HOT-MIX ASPHALT SURFACE REMOVAL, 3 1/4"	SQ YD	565.0
44000167	HOT-MIX ASPHALT SURFACE REMOVAL, 4 1/2"	SQ YD	1,035.0
44000169	HOT-MIX ASPHALT SURFACE REMOVAL, 5"	SQ YD	4,900.0
44000171	HOT-MIX ASPHALT SURFACE REMOVAL, 5 1/2"	SQ YD	42,500.0
 44000172	HOT-MIX ASPHALT SURFACE REMOVAL, 5 3/4"	SQ YD	6,675.0
44000175	HOT-MIX ASPHALT SURFACE REMOVAL, 6 1/2"	SQ YD	9,850.0
44000182	HOT-MIX ASPHALT SURFACE REMOVAL, 8"	SQ YD	5,900.0
44004000	PAVED DITCH REMOVAL	FOOT	100.0
44200513	CLASS A PATCHES, TYPE I, 7 INCH	SQ YD	5.0

* DENOTES SPECIALTY ITEM

 REVISED 2-23-11

FILE NAME *	USER NAME * hogenbj	DESIGNED - BJH	REVISED -	STATE OF ILLINOIS DEPARTMENT OF TRANSPORTATION	SUMMARY OF QUANTITIES	F.A.I. RTE.	SECTION	COUNTY	TOTAL SHEETS	SHEET NO.
es:\pwwork\pwwork\hogenbj\d0158340\057050-sh1-S00.dgn	DRAWN - BJH 10/12/2010	REVISED -	74			(57-20(1),21,22)RS-3	MCLEAN	150	8	
PLOT SCALE = 100.0000' / IN.	CHECKED -	REVISED -	CONTRACT NO. 70550							
PLOT DATE = 10/20/2010	DATE -	REVISED -	ILLINOIS FED. AID PROJECT							
				SCALE: -----	SHEET NO. 2 OF 7 SHEETS	STA. -----	TO STA. -----			

LOCATION OF WORK:

FAI 74
RURAL
INTERSTATE
MCLEAN COUNTY
STA. 737+00 TO STA. 1111+00
E OF US 51 TO CH 36 AT DOWNS

FUNDING BREAKOUT:
CONSTRUCTION TYPE CODE:

90% FEDERAL / 10% STATE
0005

CODE NO.	ITEM	UNIT	TOTAL QUANTITY
* 78000200	THERMOPLASTIC PAVEMENT MARKING - LINE 4"	FOOT	125,000.0
* 78000400	THERMOPLASTIC PAVEMENT MARKING - LINE 6"	FOOT	375.0
* 78000500	THERMOPLASTIC PAVEMENT MARKING - LINE 8"	FOOT	2,500.0
* 78000600	THERMOPLASTIC PAVEMENT MARKING - LINE 12"	FOOT	250.0
* 78000650	THERMOPLASTIC PAVEMENT MARKING - LINE 24"	FOOT	75.0
* 78003110	PREFORMED PLASTIC PAVEMENT MARKING, TYPE B - LINE 4"	FOOT	12,000.0
* 78008310	POLYUREA PAVEMENT MARKING TYPE II - LINE 4"	FOOT	4,100.0
* 78100100	RAISED REFLECTIVE PAVEMENT MARKER	EACH	1,400.0
* 78100300	REPLACEMENT REFLECTOR	EACH	50.0
* 78200410	GUARDRAIL MARKERS, TYPE A	EACH	20.0
* 78201000	TERMINAL MARKER - DIRECT APPLIED	EACH	3.0
78300200	RAISED REFLECTIVE PAVMENT MARKER REMOVAL	EACH	1,400.0
X0322118	REMOVE CONCRETE FLARED END SECTIONS	EACH	1.0
X0323583	SPEED INDICATOR SIGN	CAL DA	360.0
X0556100	PARTIAL DEPTH PATCHING (SPECIAL)	SQ YD	190.0
X2010350	TREE REMOVAL, ACRES (SPECIAL)	ACRE	0.2
X4401198	HOT-MIX ASPHALT SURFACE REMOVAL, VARIABLE DEPTH	SQ YD	51,625.0
X4421000	PARTIAL DEPTH PATCHING	TON	85.0
X6050700	REMOVE INLET BOX	EACH	5.0
X7015005	CHANGEABLE MESSAGE SIGN	CAL DA	94.0
Z0002005	ATTENUATOR BASE	SQ YD	410.0

* DENOTES SPECIALTY ITEM

▲ REVISED 2-23-11

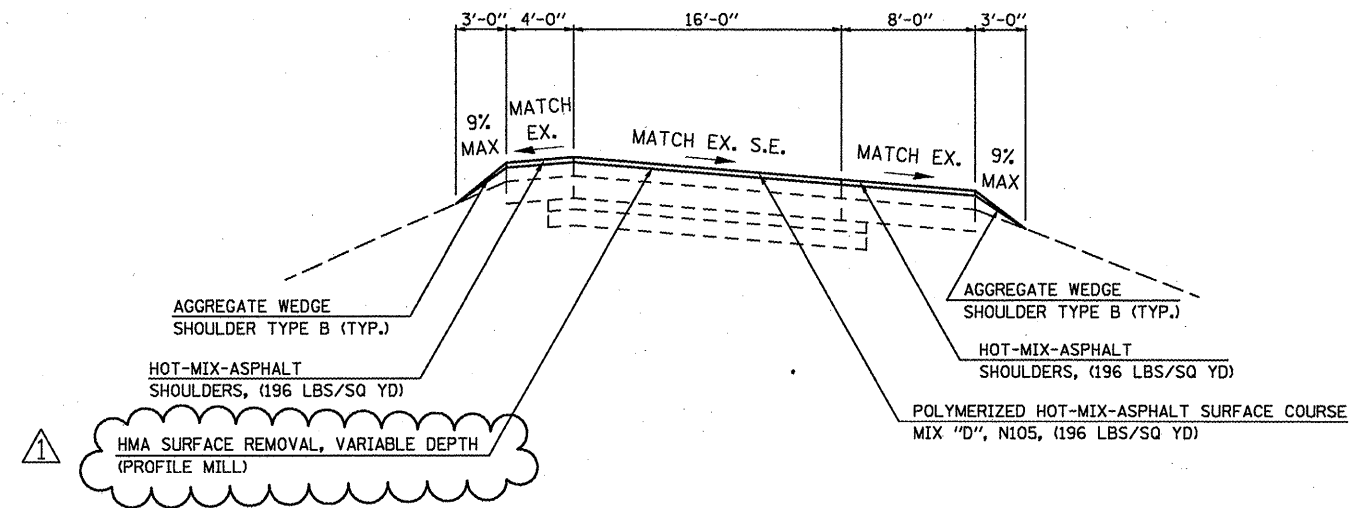
FILE NAME =	USER NAME = hoganbj	DESIGNED - BJH	REVISED -	STATE OF ILLINOIS DEPARTMENT OF TRANSPORTATION	SUMMARY OF QUANTITIES				F.A.I. RTE.	SECTION	COUNTY	TOTAL SHEETS	SHEET NO.
ct:\pwwork\pwwork\hoganbj\d0158340\0570050-sht-500.dgn	DRAWN - BJH 10/12/2010	REVISED -	74						(57-20(1),21,22)RS-3	MCLEAN	150	12	
PLOT SCALE = 100.0000' / IN.	CHECKED -	REVISED -	CONTRACT NO. 70550				ILLINOIS FED. AID PROJECT						
PLOT DATE = 10/20/2010	DATE -	REVISED -	SCALE: _____		SHEET NO. 6 OF 7 SHEETS	STA. _____ TO STA. _____							

PROPOSED TYPICAL CROSS SECTION 10

OFF RAMPS CB AND DA

STATION TO STATION
 CB 10+00.00 TO 28+63.98
 DA 10+00.00 TO 27+60.49

NOTES:
 DELETED

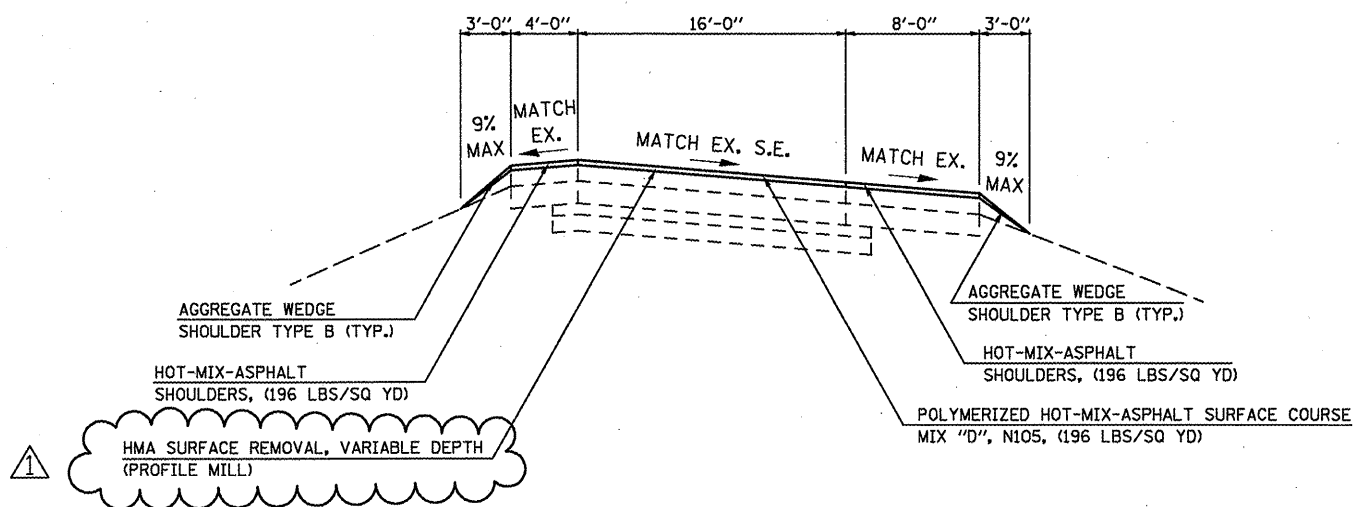


PROPOSED TYPICAL CROSS SECTION 11

ON RAMPS AC AND BD

STATION TO STATION
 AC 10+24.00 TO 31+64.13
 BD 10+24.00 TO 32+79.31

NOTES:
 DELETED



SHEET REVISED 2-23-11

FILE NAME =	USER NAME = p1ersonbr	DESIGNED -	REVISED - BJH 8/10/2010
ar\pwwork\p1dot\p1ersonbr\d0198340\05	0950-sh1-typ1ce1.dgn	DRAWN -	REVISED - BJH 8/12/2010
	PLOT SCALE = 100.0000' / IN.	CHECKED -	REVISED - Addendum #1 2/11
	PLOT DATE = 2/18/2011	DATE -	REVISED -

STATE OF ILLINOIS
 DEPARTMENT OF TRANSPORTATION

PROPOSED TYPICAL SECTIONS

F.A.I. RTE.	SECTION	COUNTY	TOTAL SHEETS	SHEET NO.
74	(57-2011),21,22RS-3	MCLEAN	150	27
CONTRACT NO. 70550			ILLINOIS FED. AID PROJECT	

SCALE: SHEET NO. OF SHEETS STA. TO STA.

* THICKNESS SHOWN FOR INFORMATION ONLY.

SCHEDULES OF QUANTITIES

HOT-MIX ASPHALT AND HOT-MIX ASPHALT SURFACE REMOVAL (SHEET 4 OF 8)

MAINLINE RAMPS

	LOCATION	STA.	TO	STA.	LENGTH (FEET)	WIDTH (FEET)	AREA (SQ YD)	* BINDER THICKNESS (IN)	SURFACE THICKNESS (IN)	BIT. MATLS (PRIME COAT) 40600100 (GALLONS)	AGGREGATE (PRIME COAT) 40600300 (TON)	POLYMERIZED HMA BINDER COURSE, IL19.0, FG, N105 40603244 (TON)	POLYMERIZED HMA SURFACE COURSE MIX "D", N105 40603550 (TON)	HMA SURFACE REMOVAL, VARIABLE DEPTH X4401198 (SQ YD)	HMA SURFACE REMOVAL - BUTT JOINT 40600982 (SQ YD)
WESTBOUND OFF	RAMP DA	10+00.		27+60.49	1,760.5	16 +/-	3,369.7	5	1.75	337.0	6.74	0.00	330.23	2,984.7	385.0
EASTBOUND OFF	RAMP CB	10+00.		28+63.98	1,864.0	16 +/-	3,139.6	5	1.75	314.0	6.28	0.00	307.68	2,656.9	482.7
WESTBOUND ON	RAMP AC	10+24.		31+64.13	2,140.1	16 +/-	3,174.3	5.75	1.75	317.4	6.35	0.00	311.08	2,707.0	467.3
EASTBOUND ON	RAMP BD	10+24.		32+79.31	2,255.3	16 +/-	3,392.6	5.75	1.75	339.3	6.79	0.00	332.47	2,882.7	509.9
RAMP TOTALS =										1,307.6	26.2	0.0	1,281.5	11,231.3	1,844.9

RAMP SHOULDERS

	LOCATION	STA.	TO	STA.	LENGTH (FEET)	WIDTH (FEET)	AREA (SQ YD)	* BINDER THICKNESS (IN)	SURFACE THICKNESS (IN)	BIT. MATLS (PRIME COAT) 40600100 (GALLONS)	AGGREGATE (PRIME COAT) 40600300 (TON)	HOT-MIX ASPHALT SHOULDERS 48203100 (TON)
WESTBOUND OFF	RAMP DA SHLD	10+00.		27+60.49	1,760.5	12' +/-	2,110.9	0	1.75	211.1	4.22	206.9
EASTBOUND OFF	RAMP CB SHLD	10+00.		28+63.98	1,864.0	12' +/-	2,248.9	0	1.75	224.9	4.50	220.4
WESTBOUND ON	RAMP AC SHLD	10+24.		31+64.13	2,140.1	12' +/-	2,431.7	0	1.75	243.2	4.86	238.3
EASTBOUND ON	RAMP BD SHLD	10+24.		32+79.31	2,255.3	12' +/-	2,584.9	0	1.75	258.5	5.17	253.3
RAMP SHLD TOTALS =										937.6	18.8	918.9

MAINLINE COUNTY HIGHWAY 36

	LOCATION	STA.	TO	STA.	LENGTH (FEET)	WIDTH (FEET)	AREA (SQ YD)	* BINDER THICKNESS (IN)	SURFACE THICKNESS (IN)	BIT. MATLS (PRIME COAT) 40600100 (GALLONS)	AGGREGATE (PRIME COAT) 40600300 (TON)	POLYMERIZED HMA SURFACE COURSE, MIX "C", N50 40603310 (TON)	HMA SURFACE REMOVAL, 1 1/2" 44000155 (SQ YD)
	CH 36	16+92.44		69+50.	5,257.6	VAR	15,505.3	0	1.5	1,550.5	31.01	1302.45	15,505.3

COUNTY HIGHWAY 36 SHOULDERS

	LOCATION	STA.	TO	STA.	LENGTH (FEET)	WIDTH (FEET)	AREA (SQ YD)	* BINDER THICKNESS (IN)	SURFACE THICKNESS (IN)	BIT. MATLS (PRIME COAT) 40600100 (GALLONS)	AGGREGATE (PRIME COAT) 40600300 (TON)	HMA SURFACE REMOVAL, 1 1/2" 44000155 (SQ YD)	HOT-MIX ASPHALT SHOULDERS 48203100 (TON)
	CH 36 SHLD	16+92.44		69+50.	5,257.6	20' +/-	11,149.9	0	1.5	1,115.0	22.30	11149.9	936.6

SHEET REVISED 2-23-11

SCHEDULES OF QUANTITIES

HOT-MIX ASPHALT AND HOT-MIX ASPHALT SURFACE REMOVAL (SHEET 8 OF 8)

HOT-MIX ASPHALT SURFACE REMOVAL SUMMARY

LOCATION	HMA SURFACE REMOVAL, BUTT JOINT 40600982 (SQ YD)	HMA SURFACE REMOVAL, VAR. DEPTH X4401198 (SQ YD)	HMA SURFACE REMOVAL, 1 1/2" 44000155 (SQ YD)	HMA SURFACE REMOVAL, 1 3/4" 44000156 (SQ YD)	HMA SURFACE REMOVAL, 2 1/4" 44000158 (SQ YD)	HMA SURFACE REMOVAL, 3 1/4" 44000162 (SQ YD)	HMA SURFACE REMOVAL, 4 1/2" 44000167 (SQ YD)	HMA SURFACE REMOVAL, 5" 44000169 (SQ YD)	HMA SURFACE REMOVAL, 5 1/2" 44000171 (SQ YD)	HMA SURFACE REMOVAL, 5 3/4" 44000172 (SQ YD)	HMA SURFACE REMOVAL, 6 1/2" 44000175 (SQ YD)	HMA SURFACE REMOVAL, 8" 44000182 (SQ YD)
WBDL	0.0	0.0	0.0	0.0	0.0	0.0	1,025.6	4,861.1	42,447.4	0.0	0.0	0.0
WBPL	420.0	40,374.0	5,651.3	1,653.3	0.0	0.0	0.0	0.0	0.0	0.0	0.0	0.0
EBDL	0.0	0.0	0.0	0.0	0.0	0.0	0.0	0.0	0.0	0.0	9,826.0	5,886.8
EBPL	0.0	0.0	14,524.3	0.0	0.0	560.0	0.0	0.0	0.0	0.0	0.0	0.0
RAMPS	1,844.9	11,231.3	0.0	0.0	0.0	0.0	0.0	0.0	0.0	0.0	0.0	0.0
WBDS	466.7	0.0	949.5	1,377.8	0.0	0.0	0.0	0.0	0.0	0.0	0.0	0.0
WBPS	268.3	0.0	569.7	826.7	16,255.1	0.0	0.0	0.0	0.0	0.0	0.0	0.0
EBDS	233.3	0.0	28,462.1	466.7	0.0	0.0	0.0	0.0	0.0	0.0	0.0	0.0
EBPS	128.3	0.0	17,077.2	280.0	5,250.3	0.0	0.0	0.0	0.0	0.0	0.0	0.0
RAMP SHLD	0.0	0.0	0.0	0.0	0.0	0.0	0.0	0.0	0.0	0.0	0.0	0.0
CH 36	0.0	0.0	15,505.3	0.0	0.0	0.0	0.0	0.0	0.0	0.0	0.0	0.0
CH 36 SHLD	0.0	0.0	11,149.9	0.0	0.0	0.0	0.0	0.0	0.0	0.0	0.0	0.0
INCIDENTAL	240.0	0.0	0.0	0.0	0.0	0.0	0.0	0.0	0.0	0.0	0.0	0.0
GRAND TOTAL	3,601.6	51,605.3	93,889.3	4,604.4	21,505.4	560.0	1,025.6	4,861.1	42,447.4	0.0	9,826.0	5,886.8
ROUND TO:	3,625	51,625	94,000	4,625	21,550	565	1,035	4,900	42,500	0	9,850	5,900

HOT-MIX ASPHALT SUMMARY

LOCATION	BIT. MATLS (PRIME COAT) 40600100 (GALLONS)	AGGREGATE (PRIME COAT) 40600300 (TON)	POLYMERIZED HMA BINDER COURSE, IL19.0,FG,N105 40603244 (TON)	POLYMERIZED HMA SURFACE COURSE, MIX "C", N50 40603310 (TON)	POLYMERIZED HMA SURFACE COURSE, MIX "C", N90 40603320 (TON)	POLYMERIZED HMA SURFACE COURSE, MIX "C", N105 40603525 (TON)	POLYMERIZED HMA SURFACE COURSE, MIX "D", N105 40603550 (TON)	BIT MATERIAL (PRIME COAT) 40800010 (GALLONS)	AGGREGATE (PRIME COAT) 40800030 (TONS)	INCIDENTAL HMA SURFACING 40800050 (TONS)	HOT-MIX ASPHALT SHOULDERS 48203100 (TON)	POLYMERIZED HMA BINDER COURSE, IL19.0,N105 40603245 (TON)
WBDL	4,833.4	96.7	11,674.1	0.0	0.0	0.0	4,713.7	0.0	0.0	0.0	0.0	2,850.4
WBPL	4,809.9	96.2	0.0	0.0	0.0	474.7	4,713.7	0.0	0.0	0.0	0.0	0.0
EBDL	1,571.3	31.4	6,149.8	0.0	0.0	0.0	1,478.3	0.0	0.0	0.0	0.0	0.0
EBPL	1,508.4	30.2	0.0	0.0	0.0	1,267.1	1,478.3	0.0	0.0	0.0	0.0	0.0
RAMPS	1,307.6	26.2	0.0	0.0	0.0	0.0	1,281.5	0.0	0.0	0.0	0.0	0.0
WBDS	4,103.2	82.1	0.0	0.0	0.0	0.0	0.0	0.0	0.0	0.0	4,007.9	0.0
WBPS	4,009.7	80.2	0.0	0.0	2,048.1	0.0	0.0	0.0	0.0	0.0	2,328.5	0.0
EBDS	4,103.2	82.1	0.0	0.0	0.0	0.0	0.0	0.0	0.0	0.0	3,622.7	0.0
EBPS	2,875.9	57.5	0.0	0.0	661.5	0.0	0.0	0.0	0.0	0.0	2,064.7	0.0
RAMP SHLD	937.6	18.8	0.0	0.0	0.0	0.0	0.0	0.0	0.0	0.0	918.9	0.0
CH 36	1,550.5	31.0	0.0	1,302.4	0.0	0.0	0.0	0.0	0.0	0.0	0.0	0.0
CH 36 SHLD	1,115.0	22.3	0.0	0.0	0.0	0.0	0.0	0.0	0.0	0.0	936.6	0.0
INCIDENTAL	0.0	0.0	0.0	0.0	0.0	0.0	0.0	75.0	2.0	75.0	0.0	0.0
GRAND TOTAL	32,725.8	654.5	17,823.9	1,302.4	2,709.7	1,741.8	13,665.3	75.0	2.0	75.0	13,879.3	2,850.4
ROUND TO:	33,000	655	17,850	1,325	2,715	1,750	13,700	75	2	75	13,900	2,860

SHEET REVISED 2-23-11

FILE NAME =	USER NAME = ppersonbr	DESIGNED -	REVISED - Addendum #1 2/11
at:\pwork\pwork\personbr\015834\059558-shr-schedule.dgn		DRAWN -	REVISED -
	PLOT SCALE = 100.0000' / in.	CHECKED -	REVISED -
	PLOT DATE = 2/18/2011	DATE -	REVISED -

STATE OF ILLINOIS
DEPARTMENT OF TRANSPORTATION

SCHEDULES OF QUANTITIES

SCALE: SHEET NO. OF SHEETS STA. TO STA.

F.A.I. RTE.	SECTION	COUNTY	TOTAL SHEETS	SHEET NO.
74	(57-20(1),21,22)RS-3	MCLEAN	150	41
CONTRACT NO. 70550				
ILLINOIS FED. AID PROJECT				

SCHEDULES OF QUANTITIES

CLASS D PATCHES, 10" CONTINUED

STATION CH 36	DIRECTION	LANE	LENGTH (ft)	WIDTH (ft)	PATCH AREA			
					TYPE I 10.0" (sq. yd)	TYPE II 10.0" 44201765 (sq. yd)	TYPE III 10.0" 44201769 (sq. yd)	TYPE IV 10.0" 44201771 (sq. yd)
56+63	SB	DL	4	14	0.0	6.2	0.0	0.0
59+37	SB	DL	6	14	0.0	9.3	0.0	0.0
60+37	SB	DL	4	14	0.0	6.2	0.0	0.0
60+79	SB	DL	4	14	0.0	6.2	0.0	0.0
61+38	SB	DL	4	14	0.0	6.2	0.0	0.0
62+41	SB	DL	6	14	0.0	9.3	0.0	0.0
63+40	SB	DL	6	14	0.0	9.3	0.0	0.0
64+43	SB	DL	6	14	0.0	9.3	0.0	0.0
65+30	SB	DL	6	14	0.0	9.3	0.0	0.0
66+34	SB	DL	6	14	0.0	9.3	0.0	0.0
67+36	SB	DL	6	14	0.0	9.3	0.0	0.0
68+00	SB	DL	6	14	0.0	9.3	0.0	0.0
68+75	SB	DL	6	14	0.0	9.3	0.0	0.0
69+25	SB	DL	4	12	0.0	5.3	0.0	0.0
CLASS D PATCH, 10" TOTALS:						706.8	124.4	202.2
ROUND TO:						710	125	205

AGGREGATE WEDGE SHOULDER, TYPE B

LOCATION	STA.	TO	STA.	# OF SIDES	AVE DEPTH (IN)	LENGTH (FT)	WIDTH (FT)	AGGREGATE WEDGE SHOULDER, TYPE B 48102100 (TON)
WB & EB SHLDS	737+00		779+38	4	1.9	4,238.5	3.0	536.9
WB & EB SHLDS	781+58		1037+74	4	1.9	25,615.9	3.0	3,244.7
WB & EB SHLDS	1040+25		1111+00	4	1.9	7,074.8	3.0	896.1
RAMP AC - WB ON	10+24		31+64	2	1.9	2,140.1	3.0	135.5
RAMP DA - WB OFF	10+00		27+60	2	1.9	1,760.5	3.0	111.5
RAMP CB - EB OFF	10+00		28+64	2	1.9	1,864.0	3.0	118.1
RAMP BD - EB ON	10+24		32+79	2	1.9	2,255.3	3.0	142.8
CROSS OVERS	VAR		VAR	6	1.9	73.1	3.0	13.9
C.H. 36	16+92		48+85	2	1	3,192.5	3.0	106.4
C.H. 36	51+15		68+96	2	1	1,781.0	3.0	59.4
C.H. 36	69+06		69+50	2	1	44.0	3.0	1.5
TOTAL =								5,366.7
ROUND TO:								5,400

TONNAGE = $\{[(AVE D' / 12 IN/FT) \times LENGTH' \times WIDTH'] / (27 CF/CY)\} \times (\# SIDES) \times (1.8 TONS/CY)$

PARTIAL DEPTH PATCHES

STATION	DIRECTION	LANE	LENGTH (ft)	WIDTH (ft)	EXISTING HMA OVERLAY THICKNESS (inch)	PD PATCHING (SPECIAL) X0556100 (sq yd)	PARTIAL DEPTH PATCHING X4421000 (ton)
EB OFF-RAMP "CB"							
16+40	EB		4	16	5.0	7.1	3.2
16+62	EB		4	16	5.0	7.1	3.2
18+57	EB		4	16	5.0	7.1	3.2
20+50	EB		4	16	5.0	7.1	3.2
25+57	EB		4	16	5.0	7.1	3.2
26+63	EB		4	16	5.0	7.1	3.2
27+68	EB		6	16	5.0	10.7	4.8
EB ON-RAMP "BD"							
10+60	EB		4	16	5.75	7.1	3.5
12+50	EB		4	16	5.75	7.1	3.5
14+56	EB		4	16	5.75	7.1	3.5
16+10	EB		4	16	5.75	7.1	3.5
16+25	EB		4	16	5.75	7.1	3.5
16+77	EB		4	16	5.75	7.1	3.5
18+58	EB		4	16	5.75	7.1	3.5
WB OFF-RAMP "DA"							
16+07	WB		4	16	5.0	7.1	3.2
26+55	WB		4	16	5.0	7.1	3.2
26+90	WB		40	4	5.0	17.8	8.0
27+25	WB		30	6	5.0	20.0	9.0
WB ON-RAMP "AC"							
11+10	WB		6	18	5.75	12.0	5.9
CH 36							
20+50	NB	D	4	12	2.5	5.3	1.6
23+50	NB	D	4	12	2.5	5.3	1.6
20+50	SB	D	4	12	2.5	5.3	1.6
23+50	SB	D	4	12	2.5	5.3	1.6
PARTIAL DEPTH PATCH TOTALS:						188.2	84.2
ROUND TO:						190	85

▲ SHEET REVISED 2-23-11

FILE NAME =	USER NAME = piersonbr	DESIGNED -	REVISED - ▲ Addendum #1 2/11	STATE OF ILLINOIS DEPARTMENT OF TRANSPORTATION	SCHEDULES OF QUANTITIES	F.A.I. RTE. 74	SECTION (57-20(1),21,22)RS-3	COUNTY MCLEAN	TOTAL SHEETS 150	SHEET NO. 46
at:\pv_work\pwsdot\piersonbr\d0158340\050550-shl-schedule.dgn		DRAWN -	REVISED -							
PLOT SCALE = 1/8" = 100.0000' / 1"		CHECKED -	REVISED -							
PLOT DATE = 2/18/2011		DATE -	REVISED -							
						ILLINOIS FED. AID PROJECT		CONTRACT NO. 70550		

SCHEDULES OF QUANTITIES

THERMOPLASTIC PAVEMENT MARKING, LINE 8"

STA.	TO	STA.	LOCATION	COLOR	LENGTH (FT)	NUMBER OF STRIPES	THERMOPLASTIC PAVEMENT MARKING, LINE 8" 78000500 (FT)
1079+25		1082+00	RAMP AC	WHITE	275	2	550
1075+74		1079+65	RAMP CB	WHITE	391	2	782
1100+42		1103+42	RAMP DA	WHITE	300	2	600
1099+80		1102+60	RAMP BD	WHITE	280	2	560
TOTAL =							2492
ROUND TO:							2500

THERMOPLASTIC PAVEMENT MARKING, LINE 12"

LOCATION	TYPE	THERMOPLASTIC PAVEMENT MARKING, LINE 12" 78000600 (SQ FT)
EB OFF RAMP	CB ISLAND	148
WB OFF RAMP	DA ISLAND	89
TOTAL =		237
ROUND TO:		250

CHANGEABLE MESSAGE SIGN

CHANGEABLE MESSAGE SIGN X7015005 LOCATION	14 DAYS BEFORE CONSTRUCTION OPERATIONS BEGIN (STAGE 1) (CAL DAY)	7 DAYS BEFORE RAMP CLOSURES (CAL DAY)	DURING RAMP CLOSURES (CAL DAY)
I-74 EAST OF THE JOB (WB LANES)	14		
I-74 WEST OF THE JOB (EB LANES)	14		
I-74 EAST OF LEROY (WB LANES)		7	4
I-74 BETWEEN LEROY & DOWNS (WB)		7	4
I-74 WEST OF US 51 (EB LANES)		7	4
I-74 BETWEEN US 51 AND DOWNS (EB)		7	4
US 150 EAST OF TOWANDA-BARNES ROAD / US 150 INTERSECTION (EB)		7	4
US 150 EAST OF DOWNS (WB)		7	4
US 51 SOUTH OF VETERAN'S PKWY (SB)			4
US 51 SOUTH OF I-74 (NB)			4
TOTALS =	28	42	24

GRAND TOTAL 94 CAL DAYS ⚠

THERMOPLASTIC PAVEMENT MARKING, LINE 24"

LOCATION	TYPE	THERMOPLASTIC PAVEMENT MARKING, LINE 24" 78000650 (SQ FT)
EB OFF RAMP	CB RT. TURN	18
EB OFF RAMP	CB LT. TURN	16
WB OFF RAMP	DA RT. TURN	18
WB OFF RAMP	DA LT. TURN	20
TOTAL =		72
ROUND TO:		75

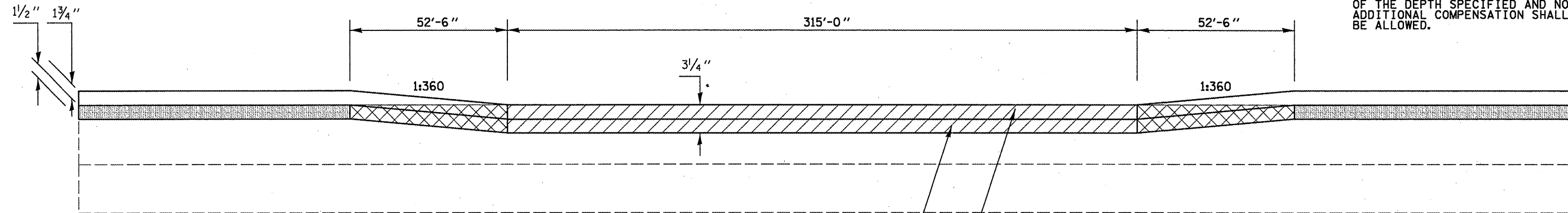
⚠ SHEET REVISED 2-23-11

FILE NAME =	USER NAME = ppersonbr	DESIGNED -	REVISED - ⚠ Addendum #1 2/11	STATE OF ILLINOIS DEPARTMENT OF TRANSPORTATION	SCHEDULES OF QUANTITIES	F.A.I. RTE.	SECTION	COUNTY	TOTAL SHEETS	SHEET NO.
at\pv_work\pvidot\personbr\20150340\05	0550-shs-schedule.dgn	DRAWN -	REVISED -			74	(57-20(1),21,22)RS-3	MCLEAN	180	50
	PLOT SCALE = 1/8" = 100.0000' / 1" =	CHECKED -	REVISED -						CONTRACT NO. 70550	
	PLOT DATE = 2/18/2011	DATE -	REVISED -						ILLINOIS FED. AID PROJECT	

DETAIL FOR I-74 MILLING AND PAVING TRANSITIONS UNDER S.N. 057-0127

I-74 EBPL STATION TO STATION
 1088+37.50 1092+57.50 UNDER S.N. 057-0127

NOTE: AREA OF MILLING TRANSITION SHALL BE INCLUDED IN THE CONTRACT UNIT PRICE FOR THE VARIOUS PAY ITEMS FOR HOT-MIX ASPHALT SURFACE REMOVAL OF THE DEPTH SPECIFIED AND NO ADDITIONAL COMPENSATION SHALL BE ALLOWED.



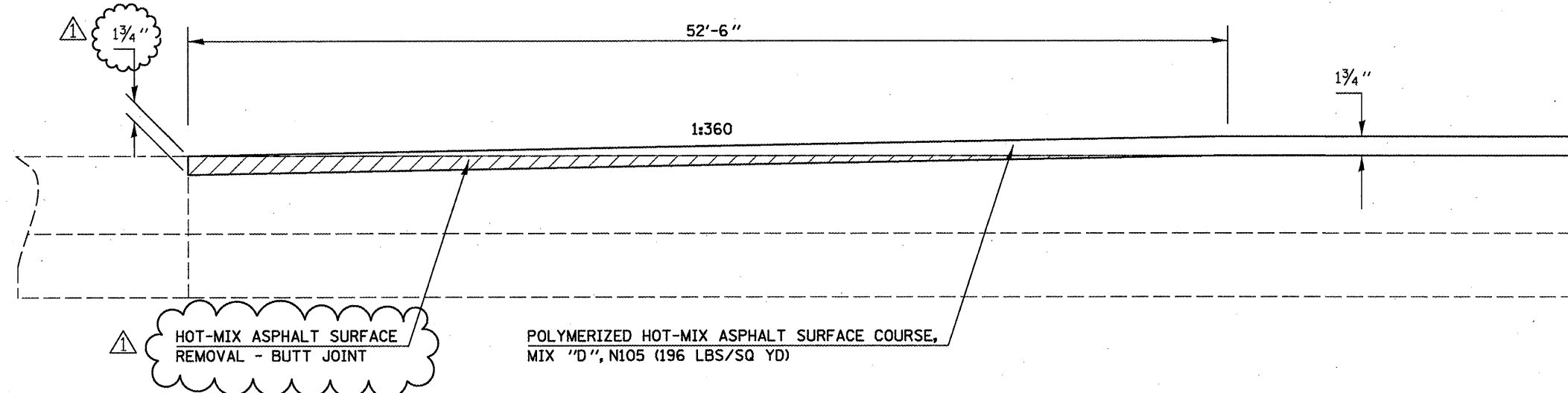
POLYMERIZED HOT-MIX ASPHALT SURFACE COURSE, MIX "C", N105 (168 LBS/SQ YD)

POLYMERIZED HOT-MIX ASPHALT SURFACE COURSE, MIX "D", N105, (196 LBS/SQ YD)

- HOT-MIX ASPHALT SURFACE REMOVAL, 1/2"
- AREA OF MILLING TRANSITION 1/2" - 3/4"
- HOT-MIX ASPHALT SURFACE REMOVAL, 3/4"

DETAIL FOR DOWNS INTERCHANGE RAMP'S MILLING AND PAVING TRANSITIONS AT C.H. 36

	<u>STATION</u>	<u>TO</u>	<u>STATION</u>	
RAMP CB (I-74 EB OFF RAMP)	28+11.48		28+63.98	END OF RAMP AT C.H. 36
RAMP DA (I-74 WB OFF RAMP)	27+07.99		27+60.49	END OF RAMP AT C.H. 36
RAMP BD (I-74 EB ON RAMP)	10+24.00		10+76.50	BEGINNING OF RAMP AT C.H. 36
RAMP AC (I-74 WB ON RAMP)	10+24.00		10+76.50	BEGINNING OF RAMP AT C.H. 36



HOT-MIX ASPHALT SURFACE REMOVAL - BUTT JOINT

POLYMERIZED HOT-MIX ASPHALT SURFACE COURSE, MIX "D", N105 (196 LBS/SQ YD)

HOT-MIX ASPHALT SURFACE REMOVAL - BUTT JOINT

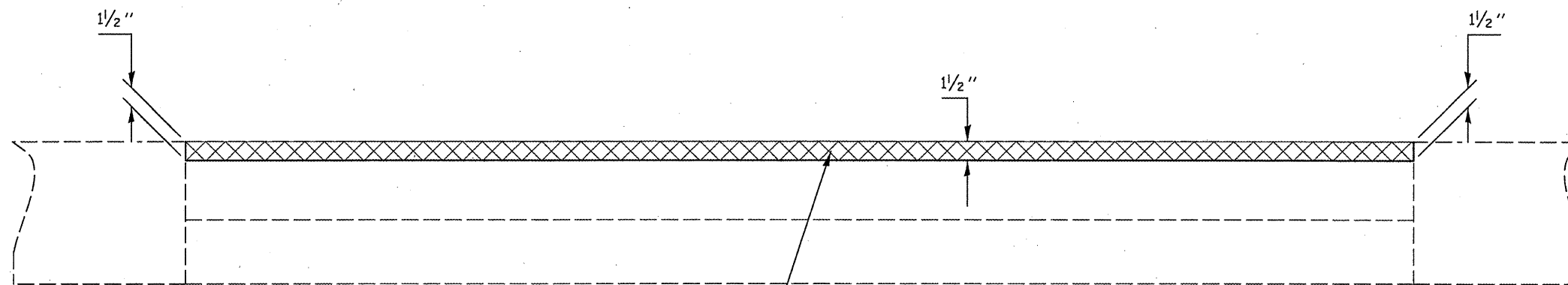
SHEET 9 OF 10

SHEET REVISED 2-23-11

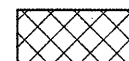
FILE NAME =	USER NAME = p1ersonbr	DESIGNED - BJH	REVISED - Addendum #1 2/11	STATE OF ILLINOIS DEPARTMENT OF TRANSPORTATION	MILLING AND PAVING TRANSITION DETAILS	F.A.I. RTE. 74	SECTION (57-20(1),21,22)RS-3	COUNTY McLean	TOTAL SHEETS 150	SHEET NO. 84
et:\p\work\p1er\dot\p1ersonbr\d0158340\050550-sht-detail1.s.dgn		DRAWN - BJH 8/31/2010	REVISED -					CONTRACT NO. 70550		
PLOT SCALE = 40.0000' / 1"		CHECKED -	REVISED -		SCALE:	SHEET NO. 9 OF 10 SHEETS	STA. TO STA.			
PLOT DATE = 2/18/2011		DATE -	REVISED -							

DETAIL FOR C.H. 36 MILLING AND PAVING AT INLAY LOCATIONS (1 1/2" MILL AND FILL)

C.H. 36 STATION TO STATION
 16+92.44 69+50.00



HOT-MIX ASPHALT SURFACE COURSE,
 MIX "C", N50, (168 LBS/SQ YD)
 OR HMA SHOULDERS 168 LBS/SQ YD



HOT-MIX ASPHALT SURFACE REMOVAL, 1 1/2"

△ DETAIL FOR DOWNS INTERCHANGE MILLING
 AND PAVING TRANSITIONS AT 5 3/4" MILLING LOCATIONS
 WAS REMOVED

SHEET 10 OF 10

△ SHEET REVISED 2-23-11

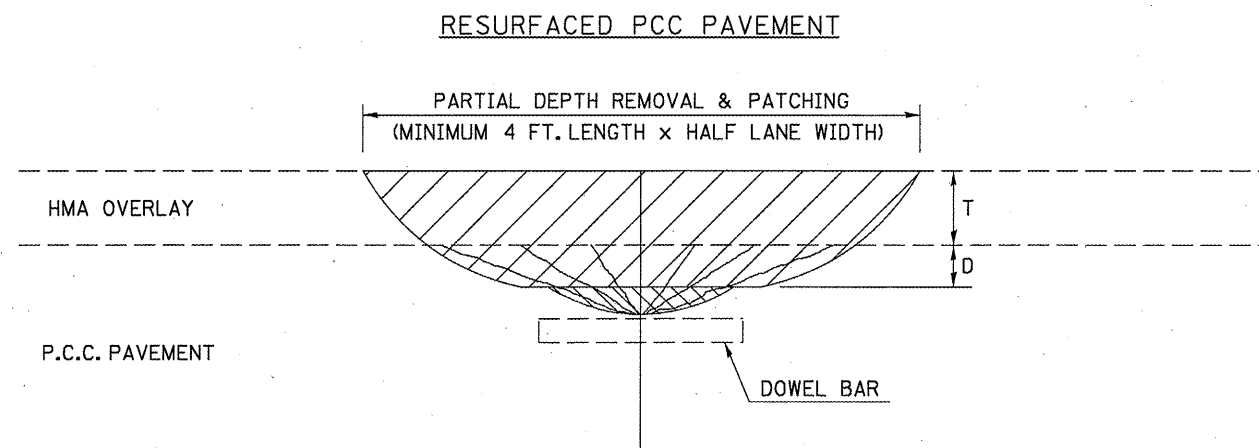
FILE NAME =	USER NAME = piersonbr	DESIGNED - BJH	REVISED - △ Addendum #1 2/11
cr:\pwork\pvidot\piersonbr\d0158340\05	0550-sht-details.dgn	DRAWN - BJH 8/31/2010	REVISED -
	PLOT SCALE = 48.0000' / in.	CHECKED -	REVISED -
	PLOT DATE = 2/18/2011	DATE -	REVISED -

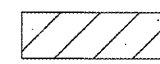
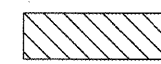
**STATE OF ILLINOIS
 DEPARTMENT OF TRANSPORTATION**

MILLING AND PAVING TRANSITION DETAILS


SCALE: SHEET NO. 10 OF 10 SHEETS STA. TO STA.

F.A.I. RTE.	SECTION	COUNTY	TOTAL SHEETS	SHEET NO.
74	(57-20(1),21,22)RS-3	McLean	150	85
CONTRACT NO. 70550				
ILLINOIS FED. AID PROJECT				

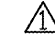


 +  = PARTIAL DEPTH PATCHING (SPEICAL) X0556100
 MILL MACHINE AND/OR WHEEL SAW REMOVAL AIR EQUIPMENT OR MECHANICAL SWEEPER REMOVAL OF LOOSE AND/OR UNSOUND CONCRETE

DESIGN NOTES

 PARTIAL DEPTH HMA PATCHING SHALL NOT BE USED WHEN HMA OVERLAY THICKNESS (T) ON PCC PAVEMENT EXCEEDS 4 3/4 INCHES (121 mm) OR ON CRG PAVEMENT.

GENERAL NOTES

 ALL VOLUME OF PARTIAL DEPTH REMOVAL SHALL BE REPLACED WITH HOT-MIX ASPHALT (HMA) AND PAID FOR AT THE CONTRACT UNIT PRICE PER TON FOR PARTIAL DEPTH PATCHING.

T = THICKNESS OF HMA OVERLAY(S). SEE EXISTING TYPICAL CROSS SECTION.

GENERAL NOTE 406H SHALL INCLUDE MIXTURE REQUIREMENTS FOR PARTIAL DEPTH PATCHING.

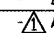
HMA REPLACEMENT IN RESURFACED PCC PAVEMENT LOCATIONS SHALL BE ACCORDING TO SECTION 406 OF THE STANDARD SPECIFICATIONS.

D = DEPTH OF PARTIAL DEPTH REMOVAL INTO EXISTING PCC PAVEMENT. (3" (75 mm) ± OR TO SOUND CONCRETE)

TRANSVERSE CONTRACTION JOINT SHOWN - OTHER LOCATIONS SIMILAR.

Note: All dimensions are in INCHES (millimeters) unless otherwise shown.

 SHEET REVISED 2-23-11

FILE NAME =	USER NAME = piersonbr	DESIGNED -	REVISED - 11/06
at:\pv_work\pvidot\piersonbr\05156340\0510550-sht-details.dgn		DRAWN -	REVISED -  Addendum #1 2/11
PLOT SCALE = 48.0000 / in.		CHECKED -	REVISED -
PLOT DATE = 2/19/2011		DATE -	REVISED -

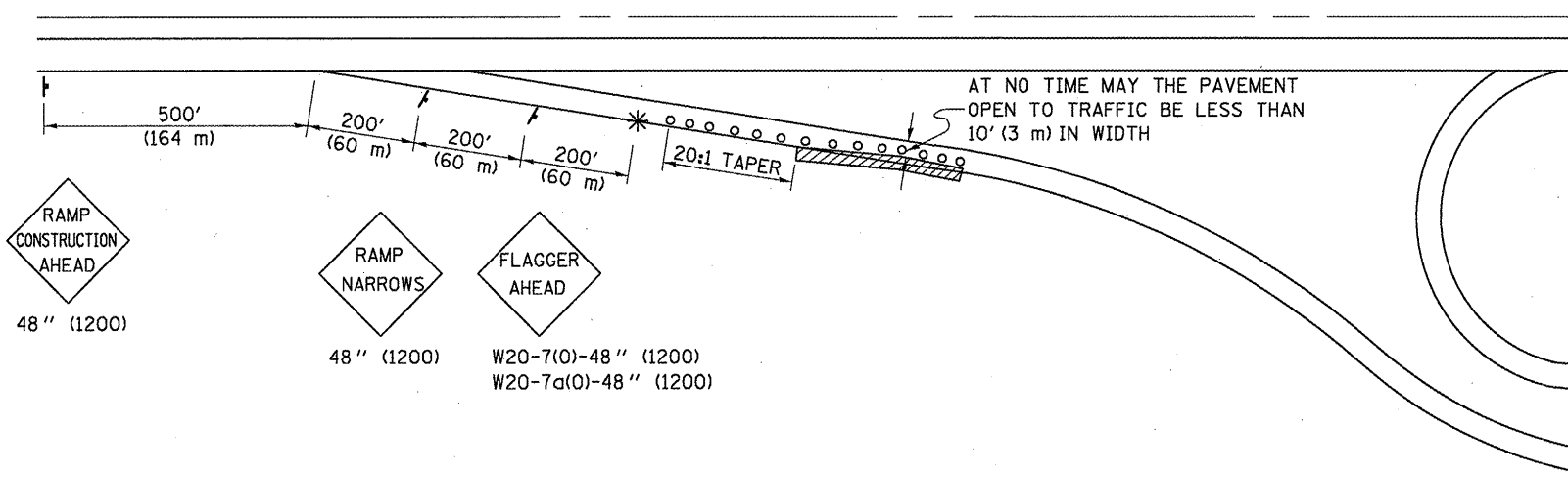
STATE OF ILLINOIS
DEPARTMENT OF TRANSPORTATION

PCC PARTIAL DEPTH HOT-MIX ASPHALT PATCHING

SCALE:	SHEET NO.	OF	SHEETS	STA.	TO STA.
--------	-----------	----	--------	------	---------

F.A.I. RTE.	SECTION	COUNTY	TOTAL SHEETS	SHEET NO.
74	(57-20(1),21,22)RS-3	MCLEAN	150	90
CONTRACT NO. 70550				
FED. ROAD DIST. NO. ILLINOIS FED. AID PROJECT				

**APPLICATION NO. 1
PARTIAL RAMP CLOSURE
DAYTIME OPERATIONS ONLY
SHOULDER OPERATIONS, HMA SURFACE REMOVAL (VARIABLE DEPTH AND BUTT JOINT) ONLY**



SYMBOLS

- (APPLICATION NO. 1) TYPE I OR II BARRICADES OR DRUMS @ 50' (15 m) CTS.
- ⊕ (APPLICATION NO. 2) TYPE I OR II BARRICADES OR DRUMS @ 25' (7.5 m) CTS. W/STEADY BURNING LIGHTS
- * (APPLICATION NO. 1) FLAGGER PLACED AS DIRECTED BY THE ENGINEER
- † SIGN ON PORTABLE OR PERMANENT SUPPORT
- ▨ WORK AREA

TYPICAL APPLICATIONS

- PAVEMENT PATCHING
- PIPE UNDERDRAINS
- HMA RESURFACING

GENERAL NOTES

CONSTRUCTION OPERATIONS SHALL BE CONFINED TO AN AREA NARROW ENOUGH THAT A MINIMUM OF 10' (3 m) OF PAVEMENT SHALL BE OPEN TO TRAFFIC AT ALL TIMES.

FULL WIDTH PAVEMENT ON THE RAMPS SHALL BE OPEN TO TRAFFIC AT NIGHT.

WHEN NO WORK IS BEING PERFORMED, THE FLAGGER WILL NOT BE REQUIRED. IF THE FLAGGER IS NOT PRESENT, THE FLAGGER SIGNS SHALL BE REMOVED OR COVERED.

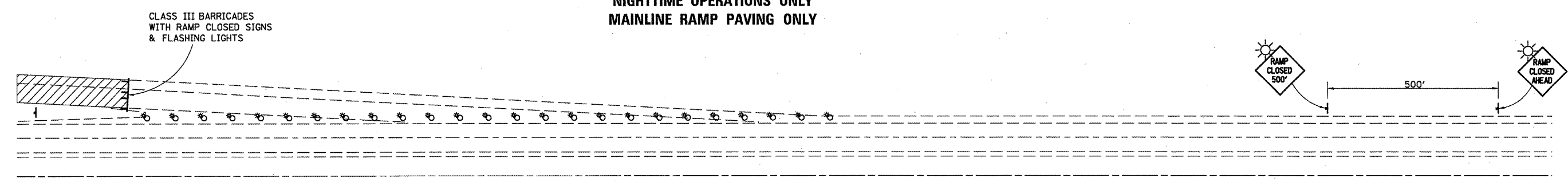
ALL SIGNS SHALL BE POST MOUNTED IF WORK IN THE AREA EXCEEDS FOUR DAYS OF DAYTIME OPERATIONS.

LONGITUDINAL DIMENSIONS MAY BE ADJUSTED SLIGHTLY TO FIT FIELD CONDITIONS.

ALL VEHICLES, EQUIPMENT, WORKERS (EXCEPT FLAGGER) AND THEIR ACTIVITIES ARE RESTRICTED AT ALL TIMES TO ONE SIDE OF THE PAVEMENT UNLESS OTHERWISE AUTHORIZED BY THE DISTRICT ENGINEER.

Traffic Control for all ramps shall be in accordance with the appropriate application of plan detail **TRAFFIC CONTROL FOR RAMPS** and will not be paid for separately, but shall be included in the contract lump sum price for Traffic Control Complete.

**APPLICATION NO. 2
RAMP CLOSURE (OFF RAMP)
NIGHTTIME OPERATIONS ONLY
MAINLINE RAMP PAVING ONLY**



GENERAL NOTES

CONTACT THE DISTRICT TRAFFIC OPERATIONS ENGINEER AT 217-465-4181 AND OTHERS ACCORDING TO "NOTIFICATION PRIOR TO ROAD CLOSURES" SPECIAL PROVISION, TWO WEEKS PRIOR TO CLOSING THE RAMP.

Note: All dimensions are in INCHES (millimeters) unless otherwise shown.

⚠ **REVISED SHEET 2-23-11**

FILE NAME =	USER NAME = ppersonbr	DESIGNED -	REVISED - 11/06	STATE OF ILLINOIS DEPARTMENT OF TRANSPORTATION	TRAFFIC CONTROL FOR RAMPS	F.A.I. RTE.	SECTION	COUNTY	TOTAL SHEETS	SHEET NO.	
o:\pv_work\pvsdot\ppersonbr\d0158340\0510550-shr-details.dgn		DRAWN -	REVISED - Addendum #1 2/11			74	(57-20(1),21,22)RS-3	MCLEAN	150	93	
PLOT SCALE = 40.0000' / in.		CHECKED -	REVISED -			CONTRACT NO. 70550					
PLOT DATE = 2/18/2011		DATE -	REVISED -			SCALE: SHEET NO. 1 OF 2 SHEETS STA. TO STA.		FED. ROAD DIST. NO. ILLINOIS FED. AID PROJECT			