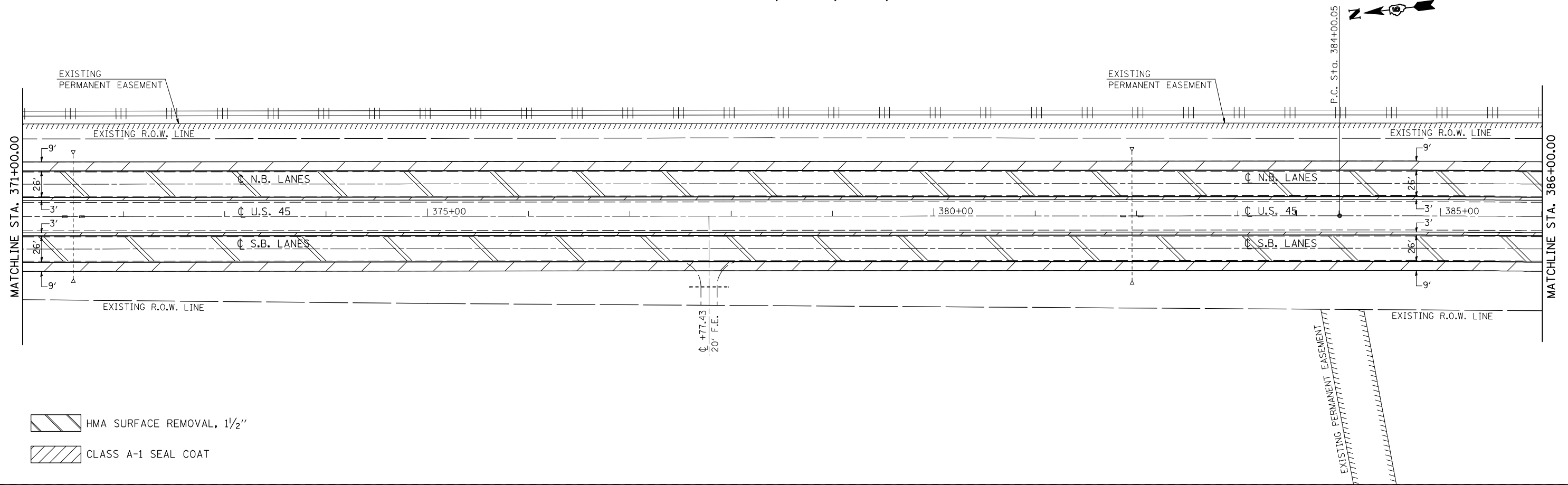
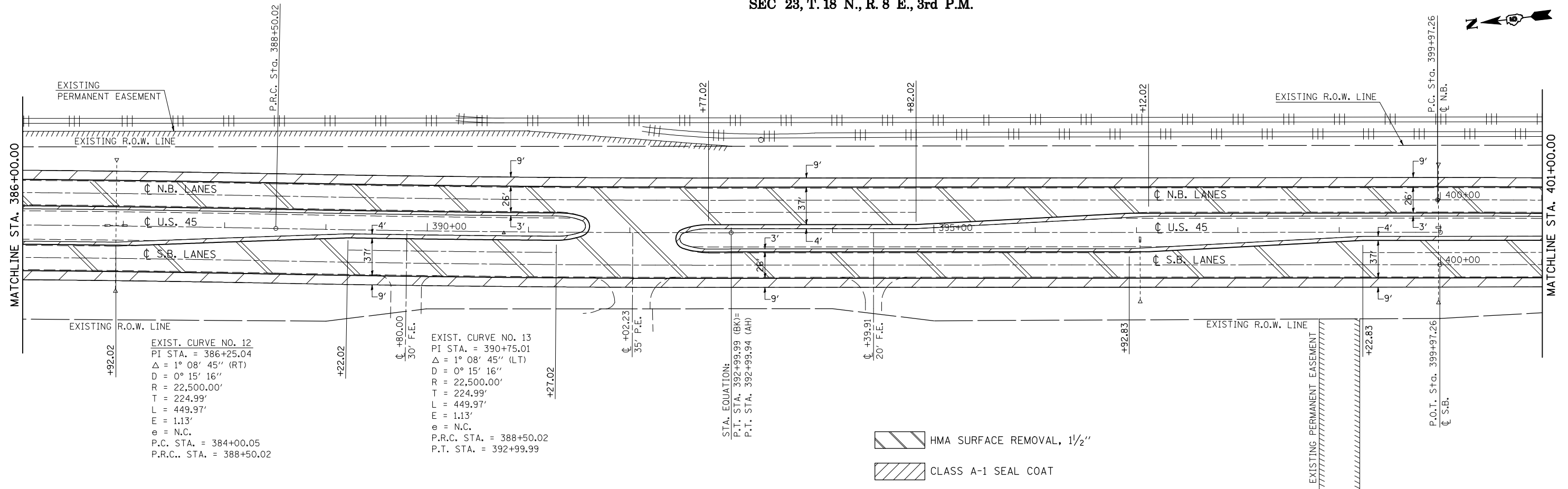


SEC 23, T. 18 N., R. 8 E., 3rd P.M.



HMA SURFACE REMOVAL, 1/2"  
 CLASS A-1 SEAL COAT

SEC 23, T. 18 N., R. 8 E., 3rd P.M.



EXIST. CURVE NO. 12  
 PI STA. = 386+25.04  
 $\Delta = 1^\circ 08' 45''$  (RT)  
 $D = 0^\circ 15' 16''$   
 $R = 22,500.00'$   
 $T = 224.99'$   
 $L = 449.97'$   
 $E = 1.13'$   
 $e = N.C.$   
 P.C. STA. = 384+00.05  
 P.R.C. STA. = 388+50.02

EXIST. CURVE NO. 13  
 PI STA. = 390+75.01  
 $\Delta = 1^\circ 08' 45''$  (LT)  
 $D = 0^\circ 15' 16''$   
 $R = 22,500.00'$   
 $T = 224.99'$   
 $L = 449.97'$   
 $E = 1.13'$   
 $e = N.C.$   
 P.R.C. STA. = 388+50.02  
 P.T. STA. = 392+99.99

STA. EQUATION:  
 P.T. STA. 392+99.99 (BK)=  
 P.T. STA. 392+99.94 (AH)

HMA SURFACE REMOVAL, 1/2"  
 CLASS A-1 SEAL COAT

FILE NAME =	USER NAME = bucklesj	DESIGNED - GAE	REVISED -
ca:\pw\work\p1dot\bucklesj\0218355\0570708-sh1-plen.dgn		DRAWN - BBP	REVISED -
PLOT SCALE = 100.0000' / IN.		CHECKED -	REVISED -
PLOT DATE = 12/16/2010		DATE - 06/04/10	REVISED -

STATE OF ILLINOIS  
DEPARTMENT OF TRANSPORTATION

PLAN SHEETS

SCALE: 1" = 50' SHEET NO. 9 OF 10 SHEETS STA. 371+00.00 TO STA. 401+00.00

F.A.P. RTE.	SECTION	COUNTY	TOTAL SHEETS	SHEET NO.
804	(23,24,25)RS-5	CHAMPAIGN	61	37
CONTRACT NO. 70708			ILLINOIS FED. AID PROJECT	