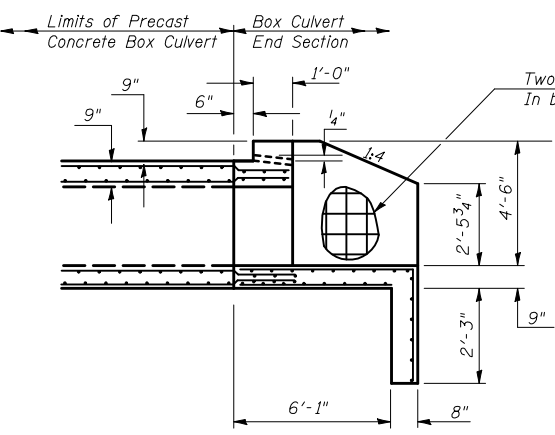
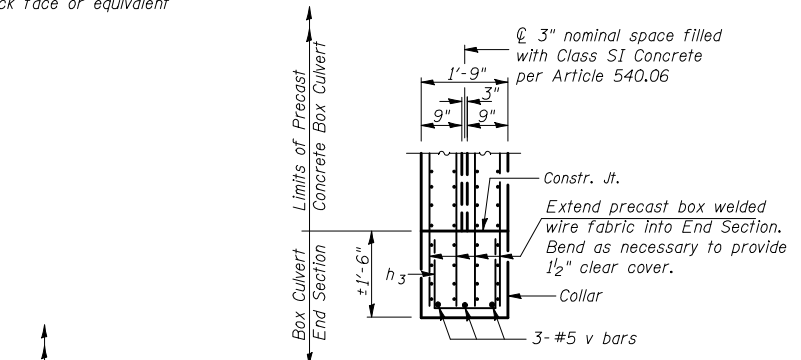


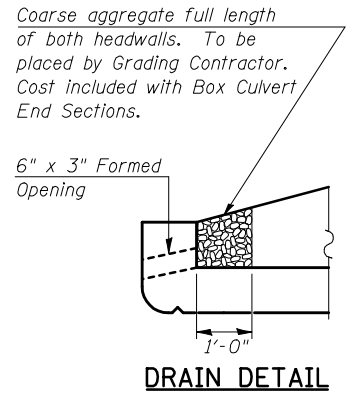
END ELEVATION



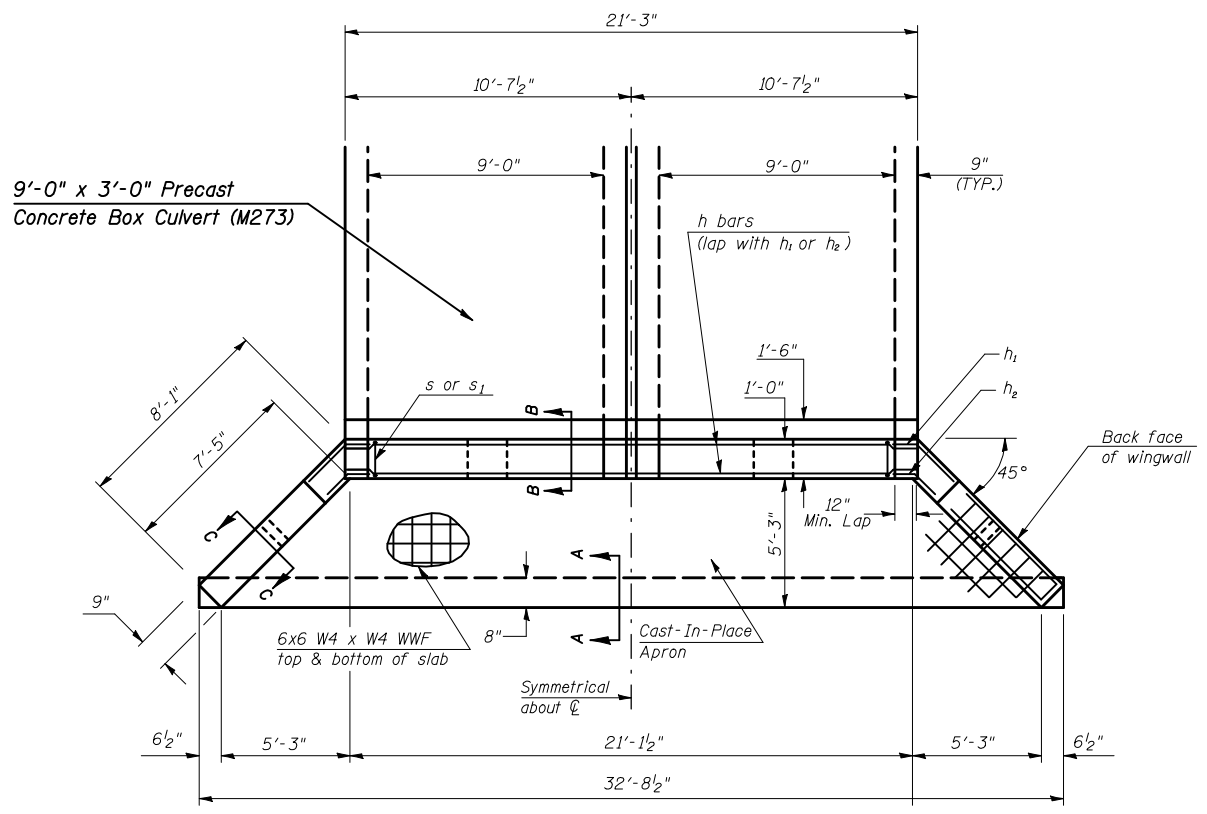
HALFSIDE ELEVATION
(DIMENSIONS AT RIGHT ANGLES TO CL ROADWAY)



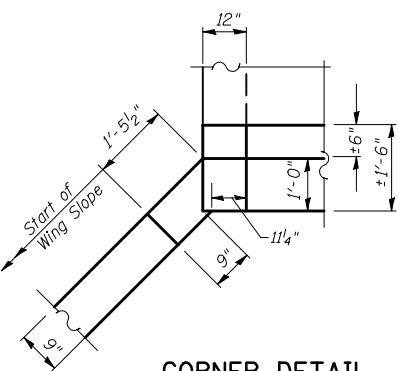
SECTION F-F



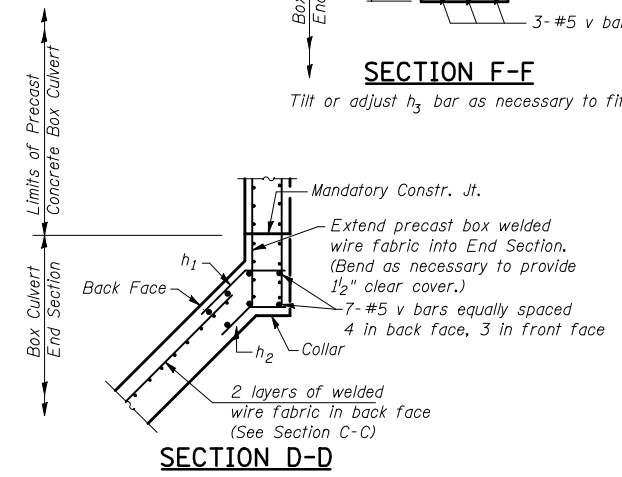
DRAIN DETAIL



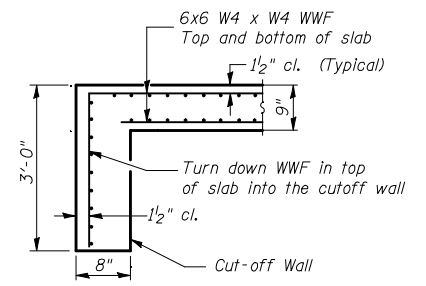
PLAN



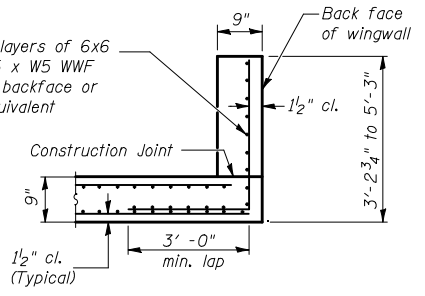
CORNER DETAIL
(Showing dimensions)



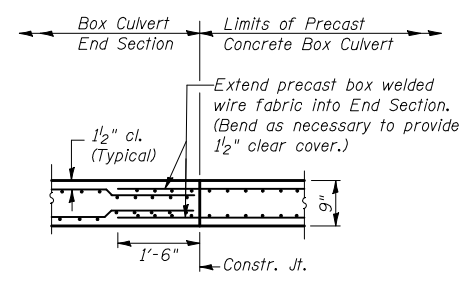
SECTION D-D



SECTION A-A



SECTION C-C
WINGWALLS



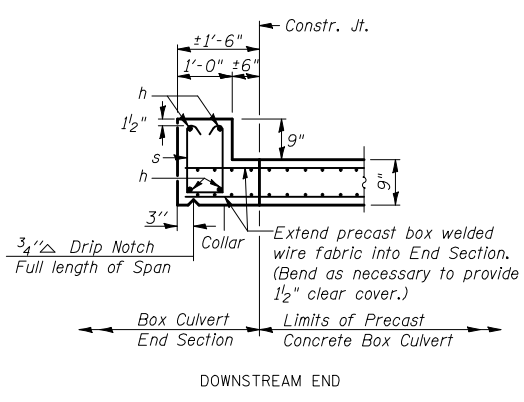
SECTION B-B
BOTTOM SLAB

BILL OF MATERIAL
For Information Only
(One End Section)

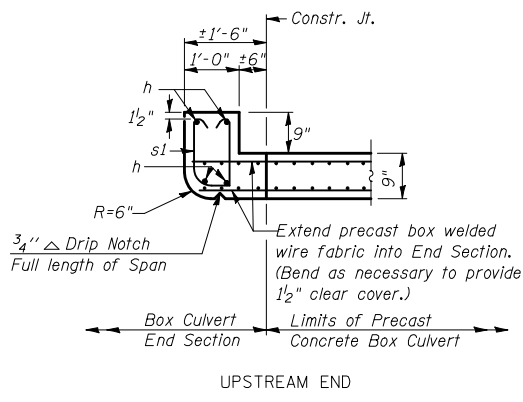
Bar	No.	Size	Length	Shape
h	4	#6	21'-1 1/2"	—
h1	10	#4	2'-1"	—
h2	10	#4	1'-5"	—
h3	5	#4	3'-11"	—
s or s1	20	#4	4'-2"	—
v	17	#5	8'-6"	—
Item		Unit	Total	
Concrete Box Culverts		Cu. Yd.	10.5	
Reinforcement Bars		Pound	370.0	
Welded Wire Fabric		Sq. Ft.	657.0	

SHEET 2 OF 5

END SECTION DETAILS
DOUBLE 9'x3' PRECAST BOX CULVERT
F.A.P. ROUTE 711 - SECTION 116CR
VERMILION COUNTY
STATION 889+37, S.N. 092-8073
CULVERT NO. 2



SECTION E-E



SECTION E-E

FILE NAME =	USER NAME = bowerml	DESIGNED -	REVISED -
ct:\pw\work\p\dot\bowerml\d0186764\7080	sht-BoxCulverts.dgn	DRAWN -	REVISED -
	PLOT SCALE = 44.0000' / IN.	CHECKED -	REVISED -
	PLOT DATE = 11/30/2010	DATE -	REVISED -

STATE OF ILLINOIS
DEPARTMENT OF TRANSPORTATION

BOX CULVERT END SECTION DETAILS				
PROPOSED CULVERT NO. 2 - STR. NO. 092-8073				
SCALE:	SHEET NO.	OF SHEETS	STA.	TO STA.

F.A.P. RTE.	SECTION	COUNTY	TOTAL SHEETS	SHEET NO.
711	116CR	VERMILION	50	20
ILLINOIS FED. AID PROJECT				
CONTRACT NO. 70801				