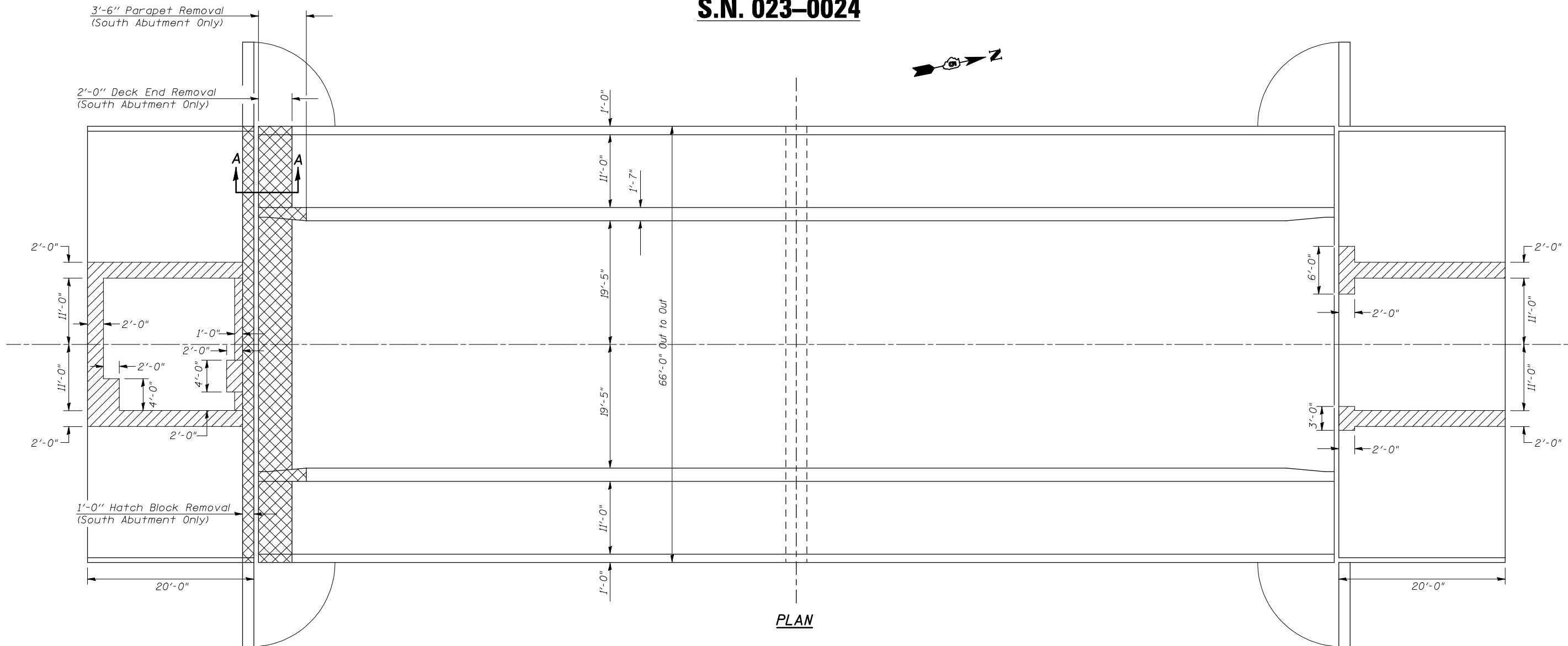
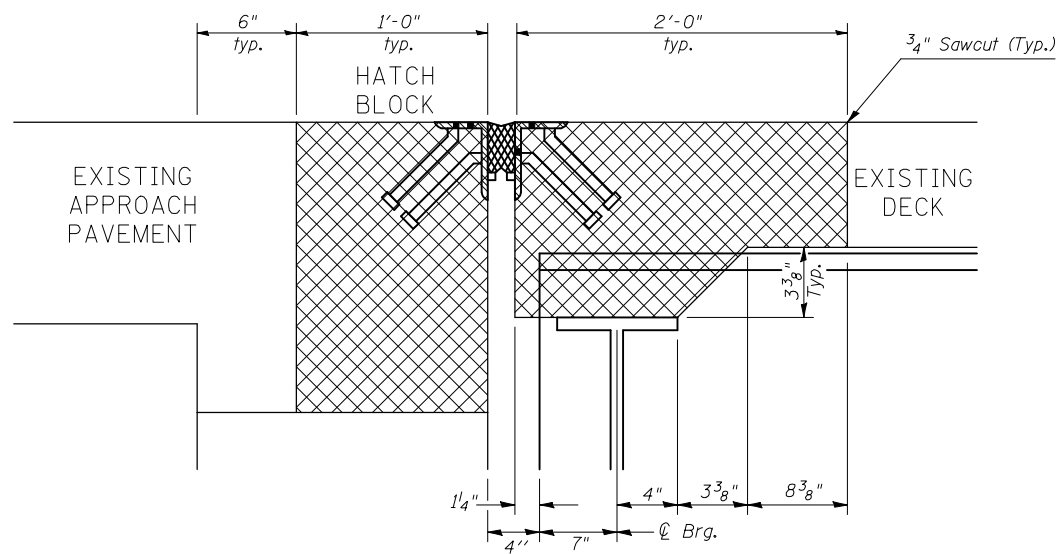


CONCRETE REMOVAL & PATCHING PLAN

S.N. 023-0024



PLAN



SECTION A-A

- Approach Slab Repair (Partial Depth)
- Concrete Removal

Note:
Removal of existing joint is included with Concrete Removal.

FILE NAME =	USER NAME = carrollrt	DESIGNED R. Carroll	REVISED -
ct:\pw\work\p\idot\carrollrt\0212096\Bridg	Bridge Repairs - 023-0024.dgn	DRAWN R. Carroll	REVISED -
	PLOT SCALE = 40.0000 ' / IN.	CHECKED T. Brandenburg	REVISED -
	PLOT DATE = 12/10/2010	DATE 10/1/2010	REVISED -

STATE OF ILLINOIS
DEPARTMENT OF TRANSPORTATION

CONCRETE REMOVAL & PATCHING PLAN
S.N. 023-0024

SCALE: SHEET NO. 3 OF 19 SHEETS STA. TO STA.

*332 & 91

F.A.P. RTE.	SECTION	COUNTY	TOTAL SHEETS	SHEET NO.
*	101 BDR & CX-BJR	EDGAR	36	15
CONTRACT NO. 70873				
ILLINOIS FED. AID PROJECT				