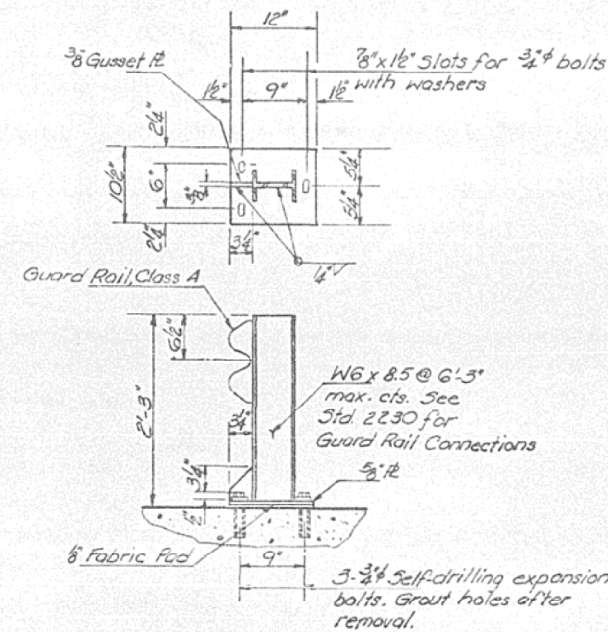
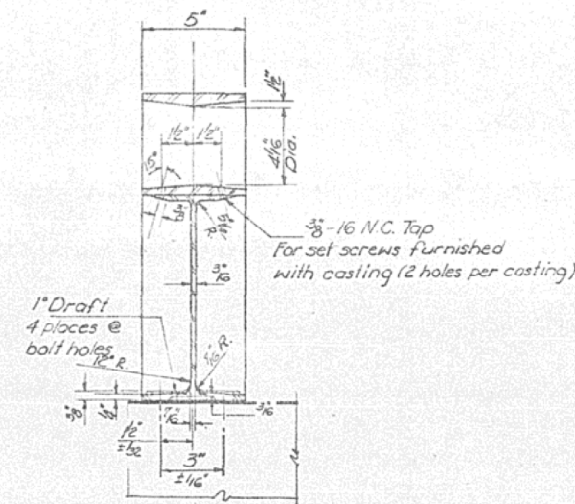
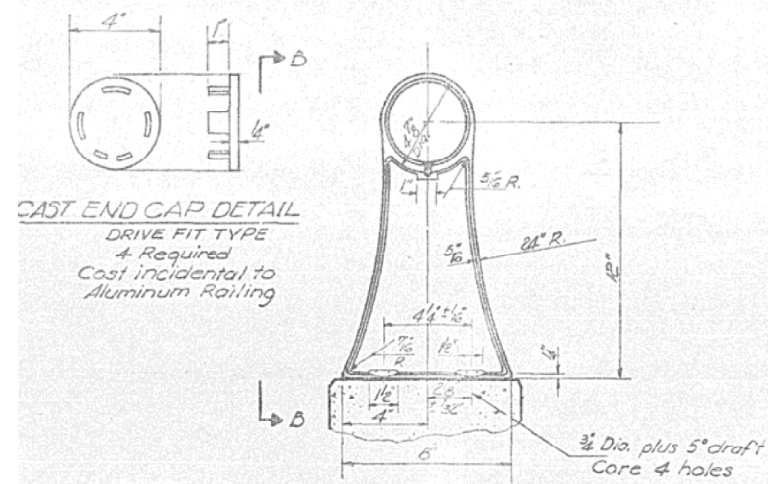
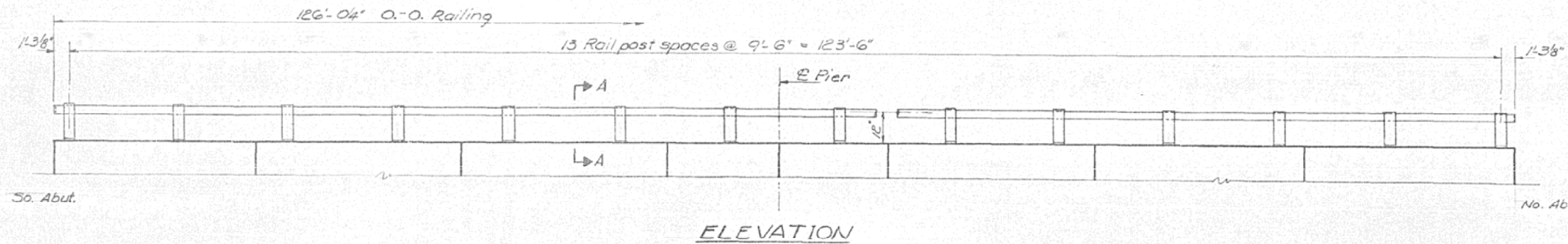


AS-BUILT PLANS FOR INFORMATION ONLY

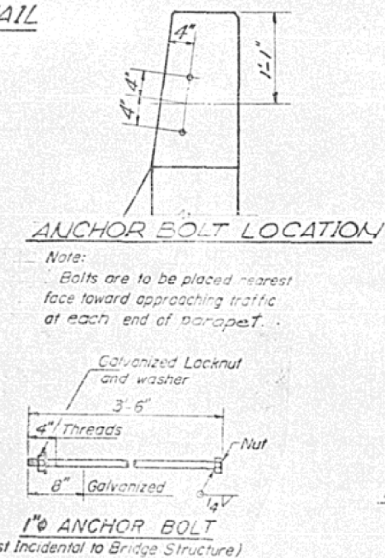
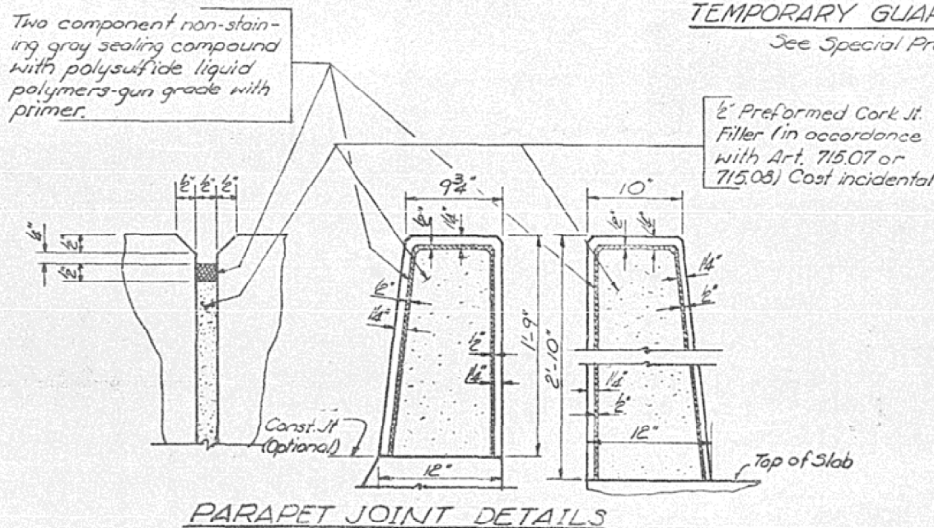
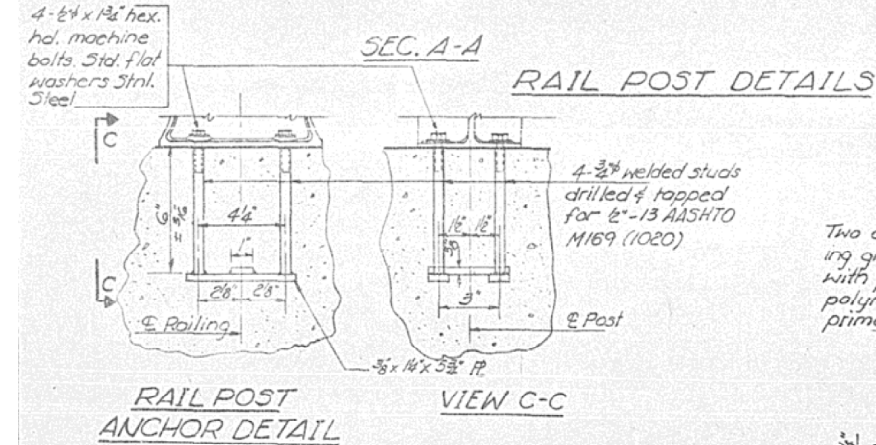
STATE OF ILLINOIS
DEPARTMENT OF TRANSPORTATION

ROUTE NO.	SECTION	COUNTY	TOTAL SHEETS	SHEET NO.
P.A. 132	(C-X) BR	Edgar	53	39
SHEET NO. 6 11 SHEETS				



NOTES
Stainless steel machine bolts or cap screws shall be in accordance with Art. 710.37 (a) of the Std. Specs. except Grade B8 or B8M may be furnished.
All Aluminum Alloy Extruded Rail shall be supplied in modular lengths of 30 ft., except at the end of bridge or over open joints in bridge deck where the rail shall be attached to a minimum of two posts.

Provide 1-1/2" and 2-1/2" Aluminum Shims for 25% of the posts.
Rail element shall be parallel to Grade - High spots shall be ground and low spots shimmed.
Seal perimeter of base of post to parapet with two component non-staining gray sealing compound with polysulfide liquid polymers, gun grade with primer. Fabric Bearing Pad shall have same dimensions as base of post.
Aluminum alloy rail shall conform to ASTM B221 alloy 6061-T6 or 6351-T5 with min. yield 35 ksi min. tensile 38 ksi and elongation of 10% in 2 inches.



BILL OF MATERIAL

Item	Quantity
Aluminum Railing Lin. Ft.	252

Quantities of Class X Conc. & Reinf. Bars for parapet are included with Superstructure. See Sheet #5

ALUMINUM RAILING
FA RTE. 132 SEC. (C-X) BR
EDGAR COUNTY
STA. 911+27.95

DESIGNED <i>R. Carroll</i>	EXAMINED <i>April 1 1977</i>
CHECKED <i>DR Gathard</i>	PASSED <i>Carl E. Brandenburg</i>
DRAWN <i>A. Barroza</i>	APPROVED _____
CHECKED <i>DR Hethard</i>	_____

FILE NAME =	USER NAME = carrollrt	DESIGNED <i>R. Carroll</i>	REVISED -
ct:\pw\work\pudot\carrollrt\d0212096\Bridg	Repairs - 023-0024.dgn	DRAWN <i>R. Carroll</i>	REVISED -
	PLOT SCALE = 40.0000 ' / IN.	CHECKED <i>T. Brandenburg</i>	REVISED -
	PLOT DATE = 12/10/2010	DATE <i>10/1/2010</i>	REVISED -

**STATE OF ILLINOIS
DEPARTMENT OF TRANSPORTATION**

AS-BUILT PLANS (FOR INFORMATION ONLY)
S.N. 023-0024

SCALE: SHEET NO. 16 OF 19 SHEETS STA. TO STA.

*332 & 91

F.A.P. RTE.	SECTION	COUNTY	TOTAL SHEETS	SHEET NO.
	101 BDR & CX-BJR	EDGAR	36	28
CONTRACT NO. 70873				
ILLINOIS FED. AID PROJECT				