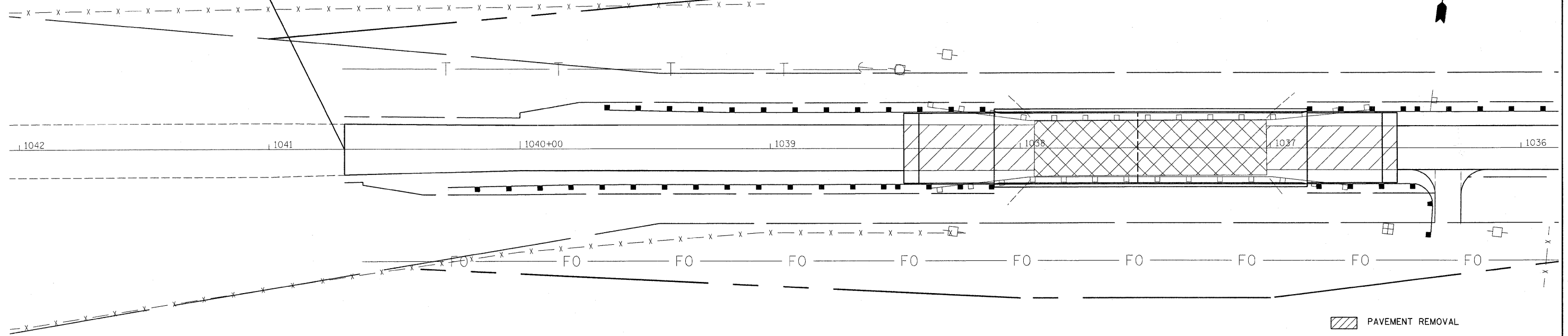


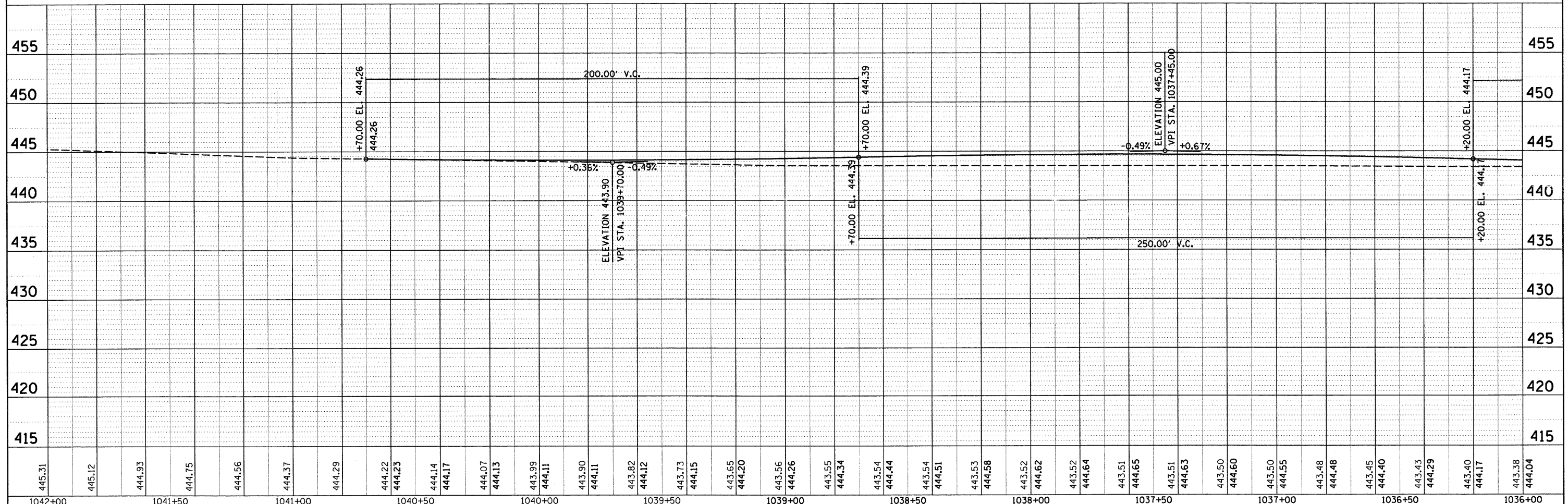
PROJECT ENDS STATION 1040+70
 SBI ROUTE 12 (OLD U.S. RTE. 50)
 SECTION 10B-1
 CLAY COUNTY



PLAN	SURVEYED	DATE
	PLOTTED	BY
	GRADES CHECKED	
	STRUCTURE NOTATIONS CHKD	
	NO.	



PROFILE	SURVEYED	DATE
	PLOTTED	BY
	GRADES CHECKED	
	STRUCTURE NOTATIONS CHKD	
	NO.	



FILE NAME =	USER NAME = swartzw	DESIGNED -	REVISED -	STATE OF ILLINOIS DEPARTMENT OF TRANSPORTATION	BRIDGE PLAN PROFILE	S.B.I. RTE. 12	SECTION 10B-1	COUNTY CLAY	TOTAL SHEETS 39	SHEET NO. 9		
CONTRACT NO. 74004	CONTRACT NO. 74004	DRAWN -	REVISED -			SCALE: 20	SHEET NO. 1 OF 2 SHEETS	STA. 1042+00	TO STA. 1036+00	ILLINOIS FED. AID PROJECT		
PLOT SCALE = 20.0000' / IN.	CHECKED -	REVISED -	REVISED -									
PLOT DATE = 8/6/2010	DATE -	REVISED -	REVISED -									