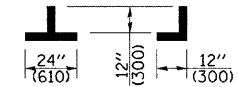
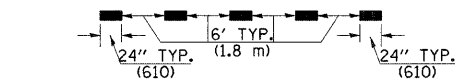
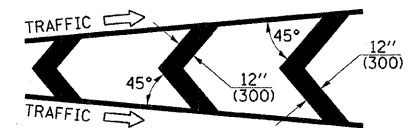
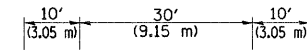
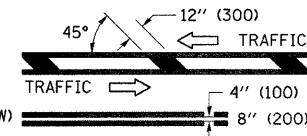
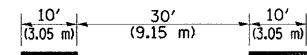


**PAVEMENT MARKING LEGEND**

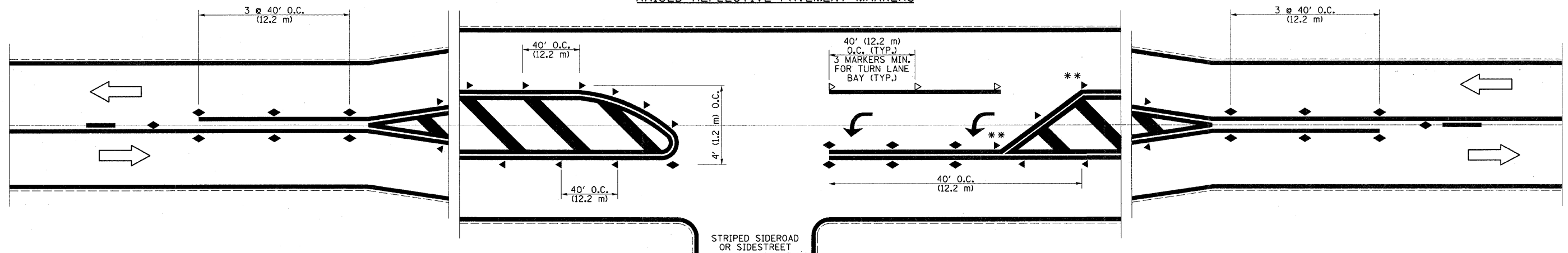
- 1 4" (100) SKIP-DASH (YELLOW)
- 2 4" (100) SOLID (YELLOW)
- 3 12" (300) DIAGONAL (YELLOW)
- 4 4" (100) DOUBLE YELLOW (NARROW)
- 5 RESERVED
- 6 RESERVED
- 7 6" (150) SKIP-DASH (WHITE)
- 8 4" (100) SOLID (WHITE)
- 9 12" (300) DIAGONAL (WHITE)
- 10 6" (150) SOLID (WHITE)
- 11 24" (600) STOP BAR (WHITE)
- 12 8" (200) SOLID (WHITE)
- 13 6" (100) LANE LINE EXTENSIONS
- 14 4" (100) PARKING WHITE



**TYPICAL PAVEMENT MARKERS LEGEND**

- ◆ TWO-WAY AMBER MARKER
- ▶ ONE-WAY AMBER MARKER
- ▷ ONE-WAY CRYSTAL MARKER

**RAISED REFLECTIVE PAVEMENT MARKERS**



\*\* REDUCE SPACING IF NECESSARY TO ASSURE MARKERS AT CORNER POINTS.

NOT TO SCALE  
Note: All dimensions are in INCHES (millimeters) unless otherwise shown.

**DISTRICT 7 DETAIL NO. 7800001**

FILE NAME =	USER NAME = swartzw	DESIGNED -	REVISED -
c:\pw_work\pwsdot\swartzw\d0185396\d774	454-shr-detail.dgn	DRAWN -	REVISED -
PLOT SCALE = 50,000 ' / IN.	CHECKED -	REVISOR -	REVISOR -
PLOT DATE = 12/13/2010	DATE -	REVISOR -	REVISOR -

**STATE OF ILLINOIS  
DEPARTMENT OF TRANSPORTATION**

**PAVEMENT MARKING AND RAISED REFLECTIVE PAVEMENT MARKERS  
(RURAL & URBAN APPLICATIONS)**

F.A.P. RTE.	SECTION	COUNTY	TOTAL SHEETS	SHEET NO.
95	18-2 RS-2	EFFINGHAM	32	26
CONTRACT NO. 74454				
ILLINOIS FED. AID PROJECT				

SCALE: NA SHEET NO. 1 OF 4 SHEETS STA. TO STA.