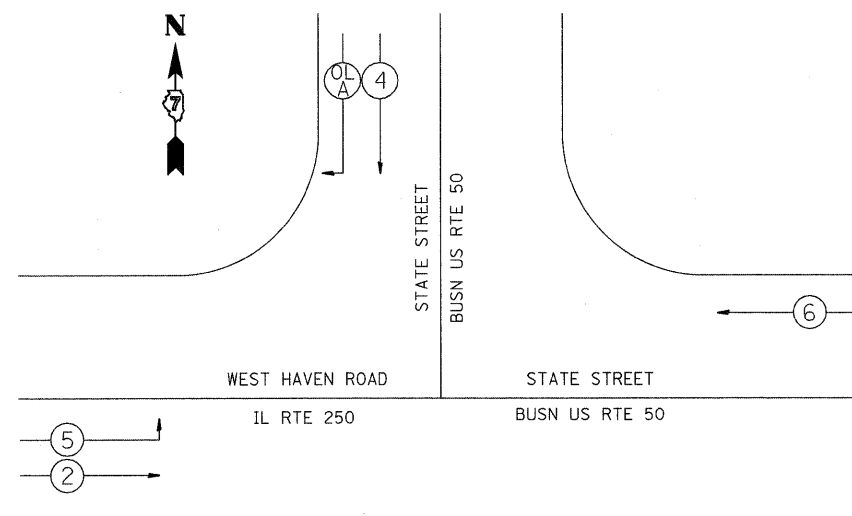


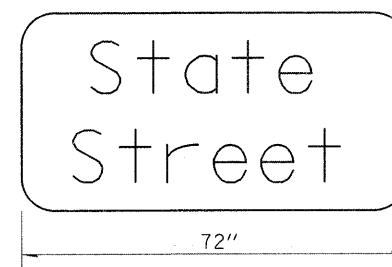
DETAIL OF MAST ARM FOUNDATION  
BOLT PATTERN



VEHICULAR PHASE NO. X

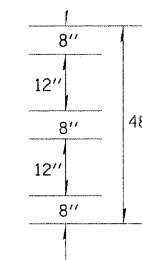


PHASE DESIGNATION DIAGRAM

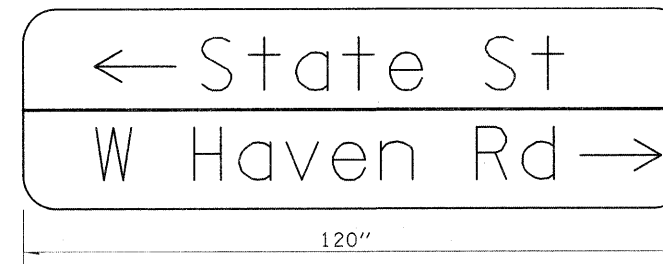


TO BE INSTALLED ON EASTBOUND MAST ARM (STA 7+59 25' L+.)  
TO BE INSTALLED ON WESTBOUND MAST ARM (STA 9+44 39' Rt.)

SIGN PANEL DETAILS

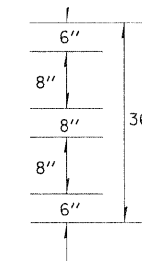


1. SIGN SHALL HAVE A WHITE REFLECTORIZED LEGEND AND BORDER ON A GREEN REFLECTORIZED BACKGROUND.
2. UPPER/LOWER CASE LETTERS, 5W CLEARVIEW FONT.



TO BE INSTALLED ON SOUTHBOUND MAST ARM (STA 8+75 27' L+.)

SIGN PANEL DETAILS



1. SIGN SHALL HAVE A WHITE REFLECTORIZED LEGEND AND BORDER ON A GREEN REFLECTORIZED BACKGROUND.
2. UPPER/LOWER CASE LETTERS, 5W CLEARVIEW FONT.

FILE NAME =	USER NAME = mclellan1e	DESIGNED -	REVISED -	<b>STATE OF ILLINOIS DEPARTMENT OF TRANSPORTATION</b>	<b>DETAILS &amp; STREET SIGNS</b>			F.A.S. RTE.	SECTION	COUNTY	TOTAL SHEETS	SHEET NO.
ct:\pw\work\pwidot\mclellan1e\d0196565\174480-TS-shd.dgn		DRAWN -	REVISED -		1809	(22)TS-1	LAWRENCE	12	4			
PLOT SCALE = 20.0000' / 1" IN.		CHECKED -	REVISED -		CONTRACT NO. 74480							
PLOT DATE = 12/28/2010		DATE -	REVISED -		ILLINOIS FED. AID PROJECT							
				SCALE:	SHEET NO. OF SHEETS	STA.	TO STA.					